

# Tunnelling and construction work at Arncliffe

## M6 Stage 1

February 2025



Transport for NSW acknowledges the Bidjigal, Dharawal, Gweagal and Gadigal clans of the Eora Nation as the Traditional Custodians of the lands on which we work and pays respect to Elders past and present.

M6 Stage 1 will connect President Avenue at Kogarah to the M8 at Arncliffe via four-kilometre twin tunnels, linking southern Sydney to the wider motorway network.

Tunnelling and construction work at Arncliffe continues during February, as well as at the project's Motorway Operations Centre (MOC1). As works continue this year, we would like to extend our ongoing appreciation to the community as we continue to deliver this important project.

View the approximate location of our main road tunnels and our tunnelling progress overleaf.

### What work are we doing?

- Ongoing electrical fit-out, commissioning and energisation of the substation building and ventilation shaft at MOC1, including installation of air monitoring equipment and exhaust shaft outlets.
- Continuing drainage excavation and installation by trenching, saw cutting, benching and rock hammering.
- Ongoing trenching for in-tunnel services and continuing to access and install electrical services in sections of the mainline tunnels.
- Continuing waterproofing to prevent water infiltration inside the tunnel as well as spraying concrete and completing blockwork to reinforce tunnel walls.

- Continuing to backfill sections of temporary tunnel areas and shaft.
- Transporting plant and equipment (this can happen outside standard construction hours).
- Removing spoil and waste from our site.

### When and where we'll be working

Above ground working hours are 7am to 6pm, Monday to Friday and 8am to 6pm, Saturday.

**Tunnelling activities are carried out continuously seven days a week**, in line with our Environment Protection Licence.

Rock hammering activities may be required underground during the night, properties near the activity will receive a notification.

### What will this mean for you?

You may notice:

- workers and vehicle movements around site
- trucks carrying spoil and waste from site
- delivery of machinery and equipment.

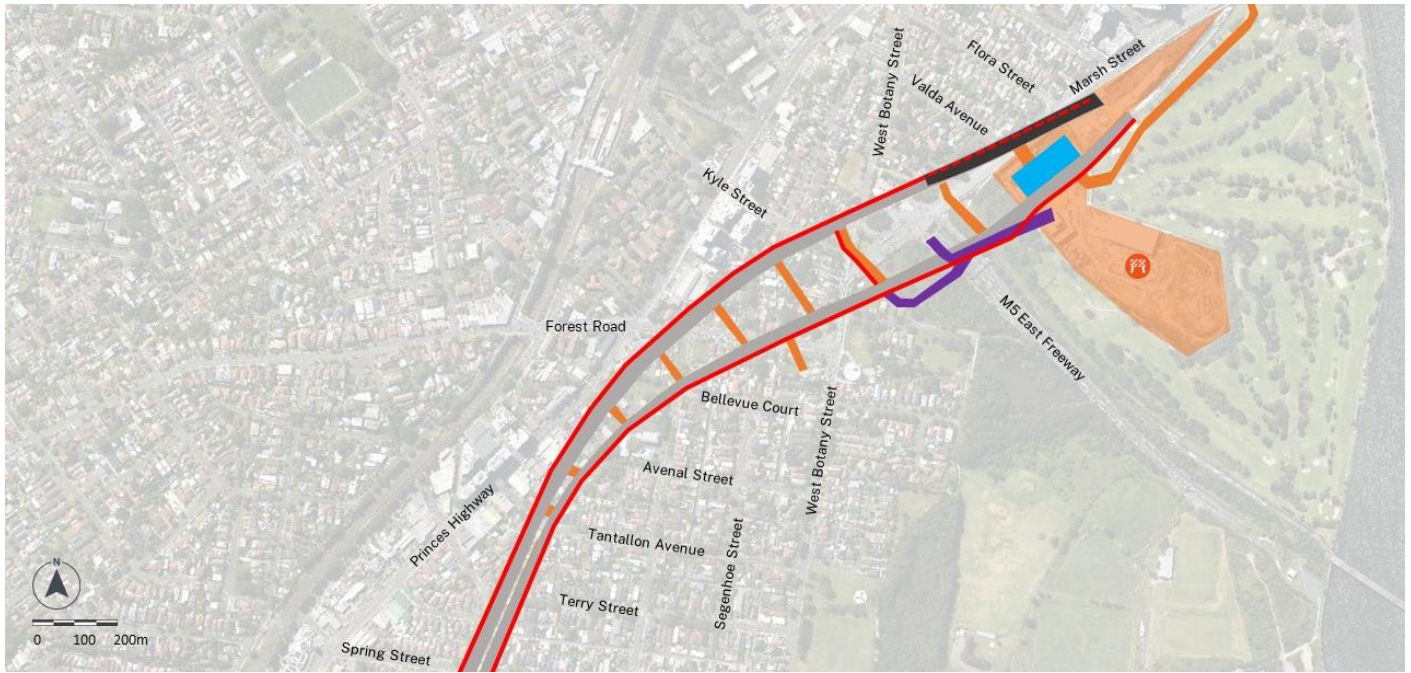
### Managing our impacts

This site is designed to minimise impacts by:









- using existing noise walls and acoustic shed
- making sure our trucks travel along main roads at all times
- for surface works activities, we will provide one hour of respite every three hours by stopping high impact noise and vibration activities (piling, hammering, and cutting).



## Location of work



### KEY

-  Arncliffe tunnelling and construction work site at Marsh Street
-  Motorway Operation Complex (MOC1) construction area
-  Road pavement complete
-  Road pavement remaining
-  Drainage excavation and installation completed
-  Drainage installation and trenching work area
-  Tunnel excavation completed
-  Temporary tunnel backfilling work area

- planning our work and implementing construction methods to limit noise and vibration including positioning machinery away from properties while in operation
- undertaking monitoring of noise and vibration to ensure it meets requirements set out in our environmental approvals, where required.

## March and April activities

- Recommencing placement of road pavement, and ongoing installation of drainage utilities in sections of the mainline tunnels.
- Ongoing fit out of the tunnel with electrical services, such as traffic signage and signals.
- Ongoing installation of safety systems, such as fire detection and building services ventilation systems at MOC1.

## Follow our tunnel progress

Head to our project website and view the complete tunnel alignment. The tunnel progress map is updated every month, providing you with up-to-date information about the project.



Image: Electrical service installation progress, as well as pavement and barriers shown at Arncliffe, November 2024

## Contact us



Project Infoline and 24-hour Construction Response Line **1800 789 297**



**info@M6Stage1.com.au**



PO Box 7261 Alexandria, NSW 2015



Visit the online portal go to **nswroads.work/M6portal**



### Interpreter service

For languages other than English call 131 450  
Arabic • Greek • Hindi • Mandarin • Vietnamese

لطلب خدمة الترجمة الشفهية للغات غير الإنجليزية اتصل  
بالرقم **131 450**

Για υπηρεσίες διερμηνείας σε άλλες γλώσσες εκτός από  
τα Αγγλικά καλέστε το **131 450**

अंग्रेज़ी के अतिरिक्त अन्य भाषाओं के लिए दुभाषिया सेवा  
**131 450** पर कॉल करें

获取英语以外的其他语言口译协助服务可以致电**131 450**

Để có dịch vụ thông ngôn cho các ngôn ngữ khác tiếng  
Anh, gọi số **131 450**