

Construction notification

May 2025

Out of hour works – Lamont Street

Construction activity is ongoing at the Powerhouse Parramatta project site. Work is progressing and activity is required on Lamont Street, at the intersection of Wilde Avenue in Parramatta, to restore areas previously affected.

Key dates

From Monday 26 May 2025
for up to two (2) weeks

Location

Lamont Street, Parramatta

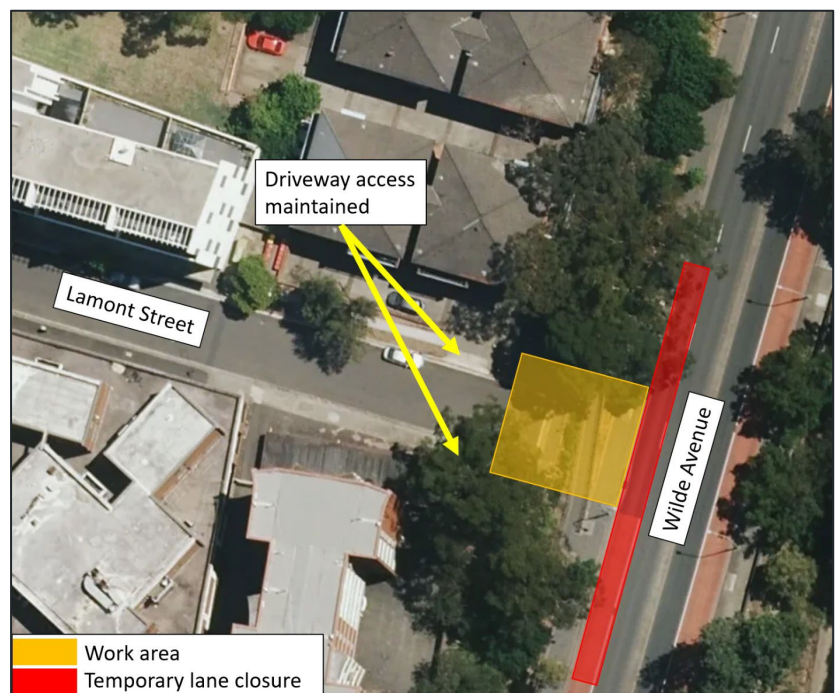
Out of hours works in Lamont Street

From **Monday 26 May 2025 for up to two (2) weeks**, work will take place in Lamont Street Parramatta to restore areas where previous electrical service activities had been undertaken.

Works will be completed outside of standard construction hours from **Monday to Friday, between 10pm and 5am** due to the following reasons:

- Works are adjacent to a main road; and
- Works will require the temporary closure of one lane on Wilde Avenue.

Activity each night will involve using an excavator to remove existing road plates on the footpaths and backfill soil in the excavation. The areas will then be reinstated with asphalt. A generator will be used to power directional lighting for the work areas.



Traffic management

Pedestrian and vehicle access around the work area will be maintained at all times.

Traffic control will be in place to manage the temporary closure of one lane on Wilde Avenue throughout each shift.

Health and safety

All effort will be made to minimise noisy activities in Lamont Street, with a focus on completing noisier activities as early in each shift as possible.

Strict environmental and planning controls are in place to manage noise, dust and vibration.

Construction hours

These out of hours work will take place between **10pm and 5am, Monday to Friday, for up to two (2) weeks from Monday 26 May 2025.**



All other construction activities will be carried out during the approved construction hours:

- Monday to Friday, 7am to 6pm
- Saturday, 8am to 5pm.

More information

We are committed to keeping you informed and regular updates will be provided.

Contact us for construction related questions, feedback or complaints:

 1800 574 931  powerhouse@lendlease.com  insw.com/powerhouseparramatta

Scan the QR code to receive the latest project updates



If you need an interpreter, please call TIS National on 131 450 and ask them to call Infrastructure NSW on 1800 931 109. Our business hours are 8am – 5pm.