

Medlow Bath Upgrade



Australian Government



Drainage work on Railway Parade

Together, the Australian Government and the NSW Government are investing \$174.4 million towards the Medlow Bath Upgrade.

Major roadwork underway

In December 2022, Abergeldie Complex Infrastructure was awarded the contract to begin major roadwork at Medlow Bath in early 2023.

A 1.2 kilometre section of the Great Western Highway through Medlow Bath will be widened to four lanes with new dedicated right-hand turning lanes. A signalised intersection will be built at Bellevue Crescent, including a new west-bound left turning bay.

Design improvements

Following recent community engagement with Minister Aitchison and local member Trish Doyle MP, additional design changes have been incorporated into the Medlow Bath Upgrade as follows:

- Removing U-turn bay on Bellevue Crescent and create an access road for properties fronting the highway (see image over page)
- Increasing lane widths from 3.35 metres to 3.5 metres

- Modifying Railway Parade pedestrian access to the station
- Re-scoping the pedestrian bridge incorporating community feedback.

Read more about the new design features over the page.

Other design improvements included in response to community feedback over the life of the project include:

- Installing traffic signals at Bellevue Crescent
- Providing safer access for properties fronting onto the highway
- Leaving Station Street open to two-way traffic and reducing the retaining walls
- Including a vegetated buffer to better separate the highway from the shared path
- Community-led landscaping on Railway Parade
- Relocating the mural bus shelter from the highway to Railway Parade
- Providing additional parking on Railway Parade to offset parking removed from the highway, and incorporating more landscaping
- Refining the water quality basin design.

Medlow Bath Station Upgrade and Pedestrian Bridge

Following community feedback, Transport has developed a new design for the Medlow Bath Pedestrian Bridge.

To make sure we reflected Medlow Bath's heritage character, specialist architects developed heritage principles for the town reflecting character, place, form and materiality.

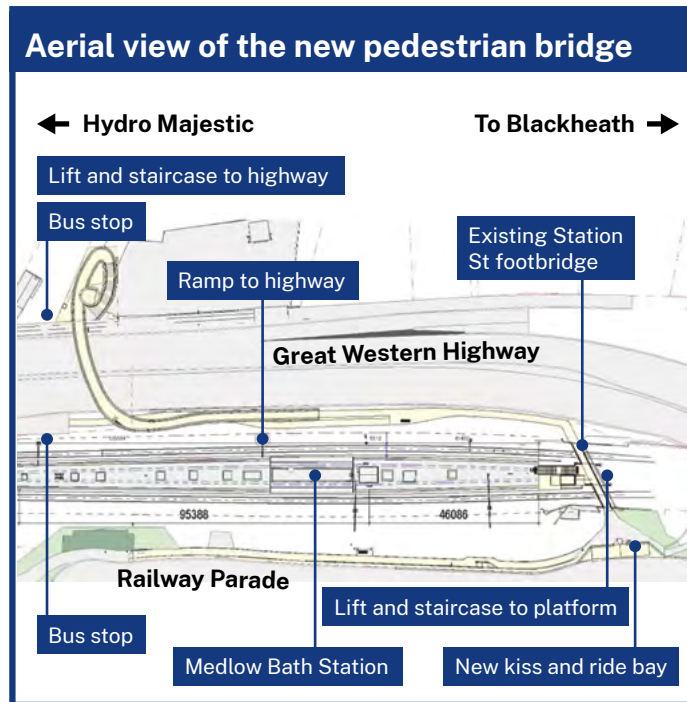
We consulted with the pedestrian bridge community reference group, and when we had agreed that the principles reflected what was important in Medlow Bath, we used them to develop three accessible bridge designs which cater for all customers.

The reference group, along with Blue Mountains City Council, local heritage, active transport and disability advocates and local Aboriginal representatives, considered the designs carefully in relation to heritage and visual impacts, connectivity, and accessibility.

We also conducted a multi-criteria analysis of all three options which considered community feedback, accessibility, heritage and visual impacts, constructibility, maintenance and sustainability.

As a result of the feedback and analysis, Option 3 (pictured below) will be progressed. It makes use of the existing station footbridge and reduces new infrastructure to be built.

It contains a lift and staircase on the western side of the highway and a ramp to the eastern side of the highway. We will install a new lift on the existing footbridge over the rail corridor, making it easier to access the station platform, and build a new kiss and ride bay close to the footbridge, opposite the cafe.



We expect major construction of the station upgrade and pedestrian bridge to begin later this year.

Head contractors for the station upgrade and pedestrian bridge, Arenco, began early construction work to prepare the area for the bridge and associated roadwork in December 2022. This early work was required regardless of the design option chosen.

The pedestrian bridge and station upgrade are scheduled for completion in early 2025. A site compound for the station upgrade and pedestrian bridge has been set up next to the Rural Fire Service building.



Visualisation of the selected pedestrian bridge design which travels over the highway via stairs and a lift on the western side and a ramp on the eastern side

Abergeldie started construction in March and over the next few months will:

- Continue property adjustment work to properties facing the Great Western Highway
- Build a water detention basin where the Elsie Langford Centre was located
- Work on the kerb, gutter and car park on Railway Parade
- Start drainage and utility work on the highway

We will share more detailed information about the Medlow Bath construction program as the project progresses.

To contact Abergeldie, call **1800 953 777** and select option 1 or email gwhmedlow@abergeldie.com

Medlow Bath Section Hut

Transport is continuing work on the new section hut rail building that was recently placed into position between sub-stations at Medlow Bath. A section hut is a shed-style rail building located next to the rail line at certain intervals that contains circuit breakers, providing protection and sectioning of the power supply to trains.

The new section hut was lifted into place in April and will be fully operational by the end of the year, weather permitting.

Remaining work includes decommissioning and removing the existing section hut. Much of the work on the section hut is carried out during the day however some night and weekend work has been needed. We thank you for your patience as we carry out this important work.

Design changes at Bellevue Crescent

Transport has responded to community concerns and has amended the Review of Environmental Factors (REF) design, removing the Bellevue Crescent U-turn bay.

The revised design still includes traffic lights and improves access for properties with existing driveway access to the highway.

Those properties will now be able to safely enter or exit their driveways via a small local access road as depicted in the image to the right.

Railway Parade landscaping complete

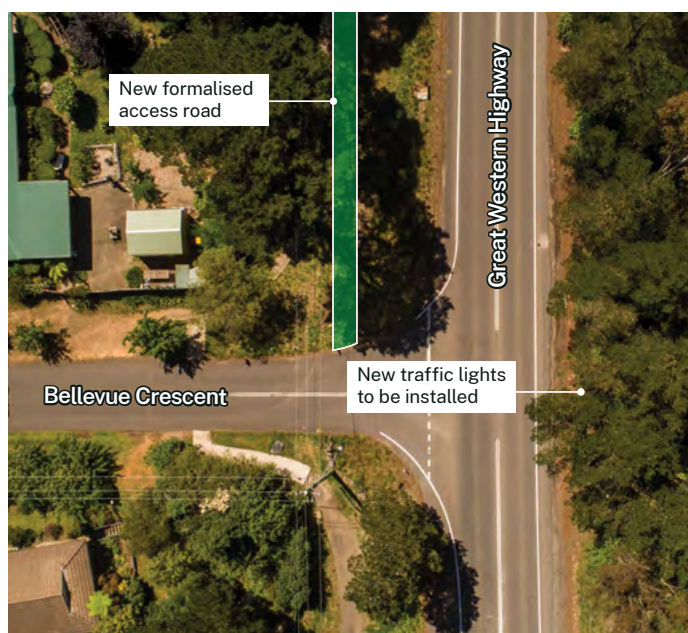
In December 2022, Transport engaged Regal Landscaping to begin work to landscape the verge along Railway Parade between Rutland Road and St Albans Road. This work was completed in early April this year.

Regal Landscapes weeded the area, planted garden beds and laid mulch in line with a landscaping plan that was developed by local landscape company, Dig, and endorsed by Blue Mountains City Council.

We will maintain the area for two years to ensure the new garden beds become well established, before handing back to council to maintain thereafter.



Landscaping on Railway Parade



Indicative design change at the Bellevue Crescent intersection - to be finalised

New life for Medlow Bath trees

The project team is exploring interesting ways to re-purpose timber being removed as part of the tree clearing program, that will allow us to widen the highway. Many of these trees are radiata pines of which we will supply to Howes Timber for axe throwing practice. Branches from the Eucalypts being removed will also be taken to Sydney Zoo as snacks or perches for animals.

As part of the re-vegetation and landscaping plan, more than 280 trees - a mix of natives and exotics - will be added to the Medlow Bath roadside as well as 50,000 ground cover plants such as grasses, and hedges.

Some of the tree clearing has started along the Great Western Highway from the United Service Station to about 400 metres south of Bellevue Crescent.

Saw cutting will be carried out during the day between 7am to 5pm and some Saturdays from 8am to 1pm. Some nightwork will be required to reduce traffic impacts on the Highway and for the safety of workers. Affected stakeholders will be notified in advance of these works.

We will mulch during the day to reduce noise at night. There is no planned work on Sundays or public holidays. After the roadworks are complete, the focus will shift to planting along the median and verges of the highway, along Railway Parade near the café and railway station and at the sediment basin.



Tree removal underway at the site compound



Pine tree removal underway to improve access for properties on the highway

Contact us

Sign up for our eNewsletter online at **nswroads.work/gwhmedlow** and you'll never miss a project update.



nswroads.work/gwhmedlow



gwh@transport.nsw.gov.au



1800 953 777



**Medlow Bath Upgrade
PO Box 334, Parkes NSW 2870**



If you need help understanding this information, please contact the Translating and Interpreting Service on **131 450** and ask them to call us on **1800 953 777**.

June 2023
23.035

Privacy Transport for NSW ("TfNSW") is subject to the Privacy and Personal Information Protection Act 1998 ("PPIP Act") which requires that we comply with the Information Privacy Principles set out in the PPIP Act. All information in correspondence is collected for the sole purpose of assisting in the delivery of this project. The information received, including names and addresses of respondents, may be published in subsequent documents unless a clear indication is given in the correspondence that all or part of that information is not to be published. Otherwise TfNSW will only disclose your personal information, without your consent, if authorised by the law. Your personal information will be held by TfNSW at 51-55 Currajong Street Parkes NSW 2870. You have the right to access and correct the information if you believe that it is incorrect.