

# Permanent freeway southbound access changes from Brook Street and Miller Street on ramps, Crows Nest and Cammeray

## Warringah Freeway Upgrade May 2026



Transport for NSW acknowledges the Cammeraygal people of the Eora nation as the Traditional Custodians of the lands on which we work and pays respect to Elders past and present.

**We are simplifying the Warringah Freeway, making it safer and easier to use, and more efficient and reliable for the benefit of all road users, including public transport users.**

We have upgraded the Brook Street southbound on ramp, which will change how you access the Warringah Freeway. The new Brook Street southbound on ramp will connect with the new Miller Street southbound on ramp for access to the freeway, Sydney Harbour Bridge, Cahill Expressway, and Alfred Street off ramp. You will no longer be able to use it to access Sydney Harbour Tunnel or the Falcon Street/Military Road southbound off ramp.

From **8 June 2026**, motorists entering the freeway from the Brook Street on ramp will join with the Miller Street on ramp where traffic from the two ramps will merge before continuing down onto the freeway.

### What to expect

We have converted the Brook Street on ramp into a long, separated ramp that merges with the Miller Street southbound on ramp before connecting into the Warringah Freeway between Miller Street and Ernest Street. This combined ramp removes lane weaving and improves safety on the freeway.

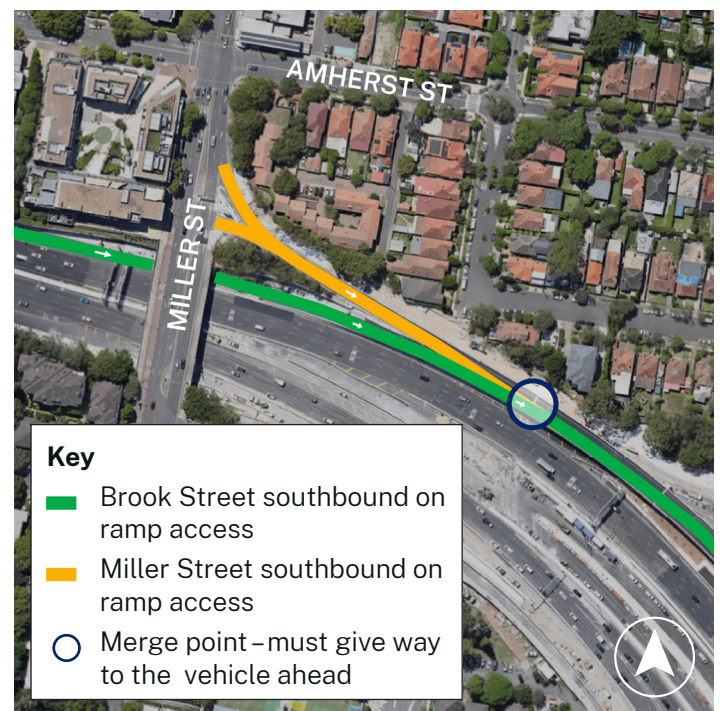
The combined Brook Street and Miller Street on ramps also provide seamless access to the Alfred Street off ramp to Neutral Bay, Kirribilli and North Sydney.

From **6am Monday 8 June 2026**, motorists are advised:

- From Brook Street, access to the Sydney Harbour Tunnel and the Falcon Street/Military Road southbound off ramp will no longer be available. Use the Cahill Expressway to access the Eastern Distributor.
- The Miller Street and Brook Street on ramp lanes merge into a single lane using a 'zipper merge'. Whichever vehicle is behind must give way to the vehicle ahead.

- Access to the Brook Street northbound off ramp will not change. It can be accessed from the Sydney Harbour Tunnel (until 2028 when the Western Harbour Tunnel opens), Sydney Harbour Bridge and the Berry Street northbound on ramp, North Sydney.

Please refer to **map 2** over the page to see these new permanent changes.



#### Key

- Brook Street southbound on ramp access
- Miller Street southbound on ramp access
- Merge point - must give way to the vehicle ahead

Map 1 – Brook Street on ramp and Miller Street southbound on ramp merge to Sydney Harbour Bridge and Cahill Expressway.

#### To safely implement this change motorists are advised:

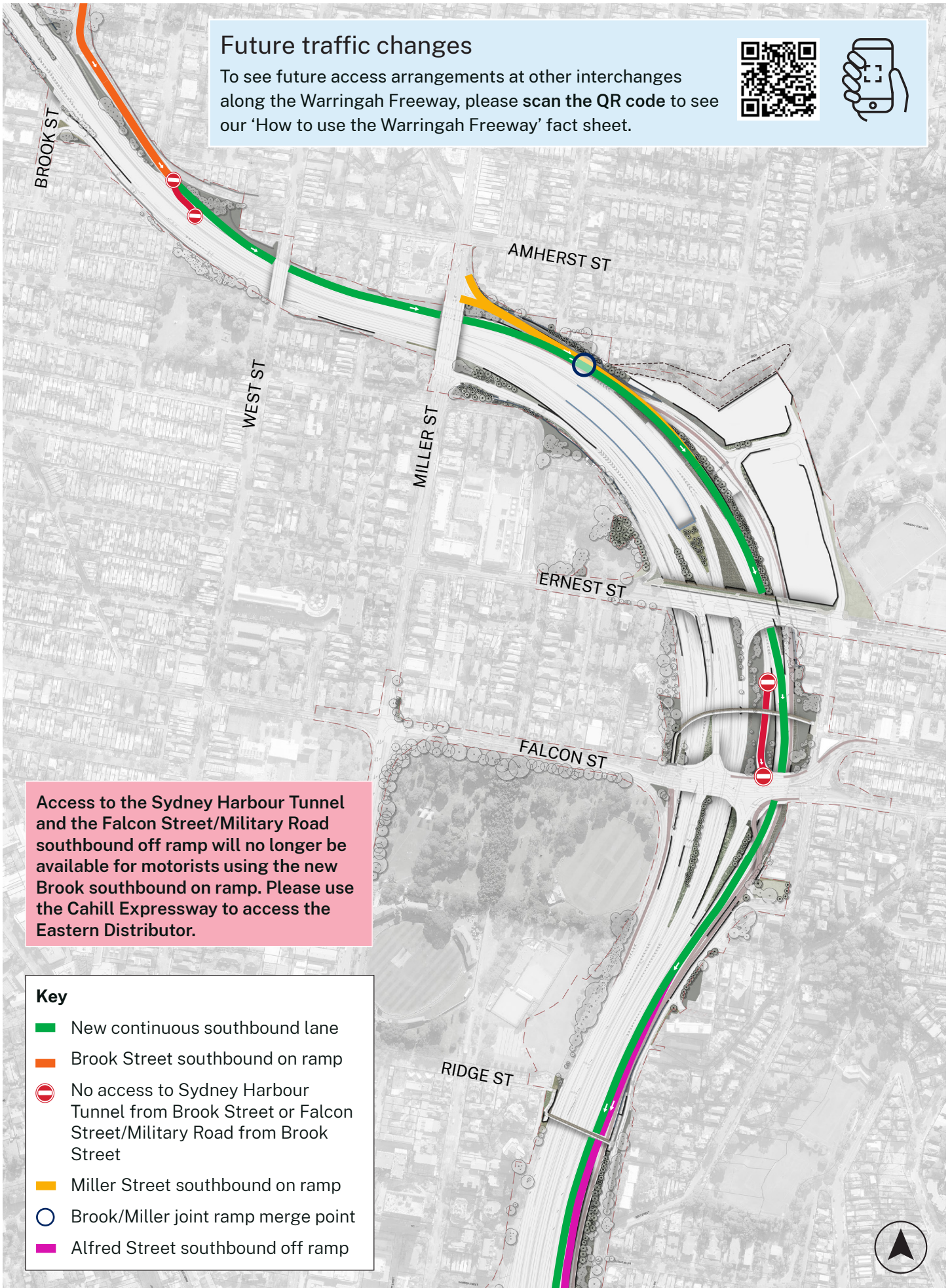
Brook Street on ramp closed from 10pm Friday 5 June to 6am Monday 8 June

**For more information visit [LiveTraffic.com](https://www.live-traffic.com)**



## Future traffic changes

To see future access arrangements at other interchanges along the Warringah Freeway, please scan the QR code to see our 'How to use the Warringah Freeway' fact sheet.



Access to the Sydney Harbour Tunnel and the Falcon Street/Military Road southbound off ramp will no longer be available for motorists using the new Brook southbound on ramp. Please use the Cahill Expressway to access the Eastern Distributor.

### Key

- New continuous southbound lane
- Brook Street southbound on ramp
- No access to Sydney Harbour Tunnel from Brook Street or Falcon Street/Military Road from Brook Street
- Miller Street southbound on ramp
- Brook/Miller joint ramp merge point
- Alfred Street southbound off ramp

Map 2 – New integrated southbound access from Brook Street to the Miller Street on ramp and Alfred Street off ramp. Access to West Street and Amherst Street is not impacted by this change.



Image: Artist impression of Brook Street on ramp merging into the Miller Street southbound on ramp to form one viaduct structure. Some elements are subject to design, this includes elements of Western Harbour Tunnel Place, Design and Landscape Plan.

## Managing our impact

Residents may experience periods of high noise throughout this work. The level of impact will vary depending on the proximity to work locations.

To minimise the impact of this work we will:

- turn off machinery when not in use
- use acoustic blankets to minimise noise, where feasible
- direct temporary lighting down and away from houses
- fit equipment with devices to minimise noise, particularly non-tonal reversing beepers.

All work will be carried out in line with the project's environmental approvals. All our work zones and equipment laydown areas will be separated from local traffic, pedestrians and cyclists.

## Extended long weekend work from 5 June to 9 June 2026

From **10pm Friday 5 June to 6am Tuesday 9 June 2026**, we will be working along the freeway southbound lanes between Miller Street and Mount Street. With lower-than-normal traffic volumes over the June long weekend period, we will implement multiple temporary lane closures. This means that our work will have a lower impact to the local road networks around the freeway than would be the case during normal traffic periods. **Scan the QR code** to view our dedicated weekend work page and stay up to date with the latest information about our long weekend work and temporary traffic changes.



Click on the links to view our latest fact sheets about the new ramps we have built or online at [nswroads.work/wfuportal](https://nswroads.work/wfuportal):

- [Brook Street interchange upgrade](#)
- [Miller Street southbound on ramp](#)
- [Alfred Street southbound off ramp](#)



Scan the QR code to view a driver video for this new route.



### For the latest traffic updates:

Call 132 701, visit [livetraffic.com](https://livetraffic.com) or download the app Live Traffic NSW

## Contact us



1800 931 189



[whtbl@transport.nsw.gov.au](mailto:whtbl@transport.nsw.gov.au)



[nswroads.work/wfuportal](https://nswroads.work/wfuportal)



### Interpreter service

For languages other than English call 131 450