



Transport for NSW

M6 Stage 1

Bicentennial Park Ponds diversion for the construction of the M6 Stage 1 tunnels

The M6 Stage 1 will connect President Avenue at Kogarah to the M8 at Arncliffe via a four-kilometre tunnel, linking southern Sydney to the wider motorway network.

The M6 Stage 1 involves the construction of the entry and exit ramps underneath the Bicentennial Park Ponds. To facilitate the construction of the ramps, we will need to temporarily divert the Bicentennial Park Ponds through temporary stormwater pipes. The diversion will maintain connectivity between the Bicentennial Park Ponds throughout our work.

This fact sheet is designed to inform you about the ponds diversion and how we will manage and mitigate impacts to flora and fauna during the work.

What does 'pond diversion' mean?

Pond diversion is the act of changing the course of water from one point to the other. As the entry and exit tunnel ramps will pass underneath the middle of the Bicentennial Park Ponds, approximately where the pedestrian footbridge is located, we will need to change the course of the water until the ramps are constructed.



Artist impression of the tunnel entrance and exit at President Avenue, Kogarah (subject to final design)

How will we divert the Bicentennial Park Ponds?

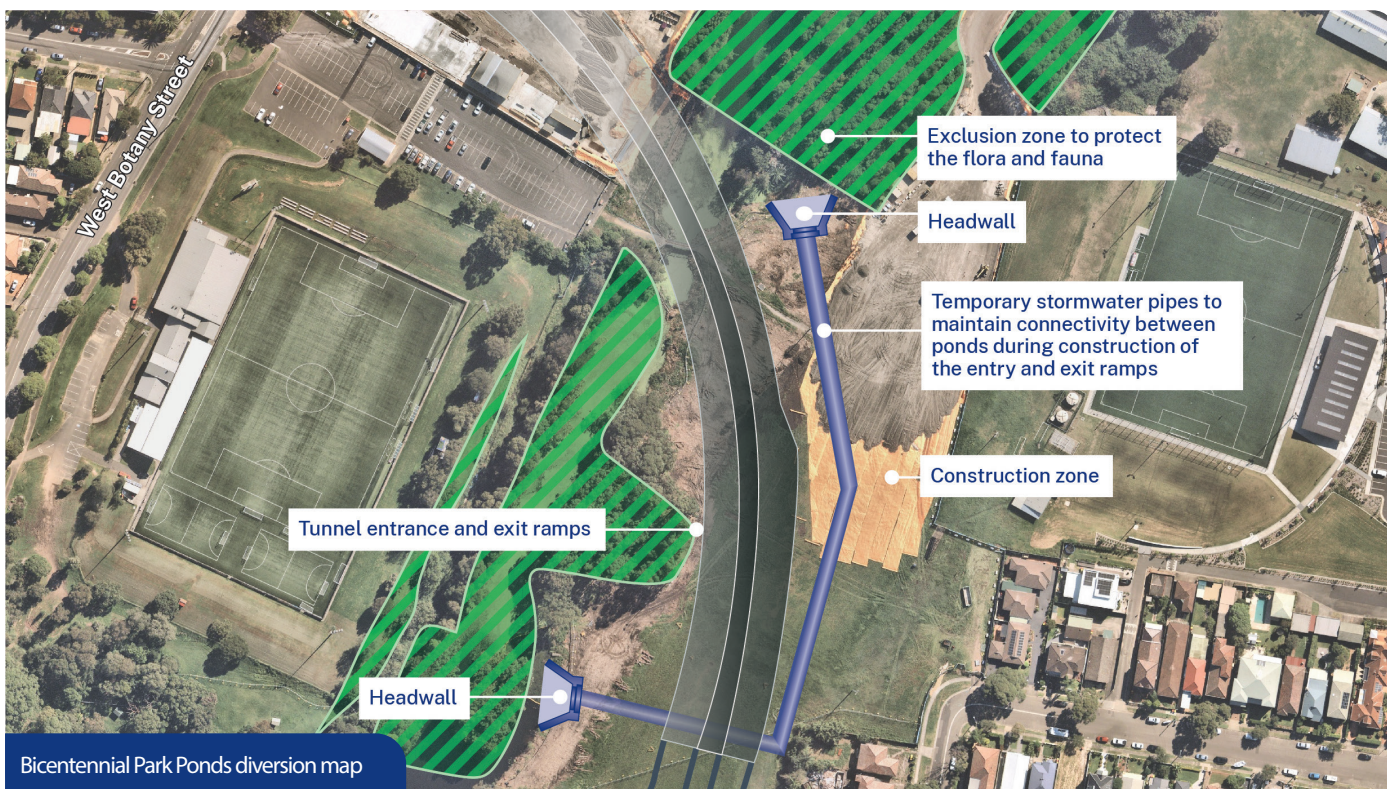
The Bicentennial Park Ponds diversion will take place in two stages:

Stage one – waterway diversion system:

We will excavate and lay around 300 metres of stormwater pipes. These pipes will be anchored and supported by a headwall structure to prevent movement due to water and soil pressure. Once the headwalls are completed, the pipes will be connected into the headwalls.

Stage two – isolation of work area:

Qualified ecologist and wetland specialists will supervise works to install a work platform. This platform will enable the installation of diaphragm walls (d-walls) which will form the outside of the permanent covered roadway structure. Installing these first, isolates the wetland from both the work area and the final roadway, protecting the Rockdale Bicentennial Park ponds, and mitigating impacts from construction. Following excavation of material between the d-walls, a water-tight roof structure will be installed between the walls with backfilling and reinstatement of this section of waterway.



Environmental monitoring

A Wetland Monitoring Program is being implemented to closely monitor the Bicentennial Park Ponds and to protect the existing aquatic environment.

The program includes:

- water quality monitoring and analysis
- water level monitoring
- aquatic and 'close to the bank' flora and fauna health monitoring
- native fish species diversity and abundance monitoring
- macroinvertebrates monitoring
- estuarine macroinvertebrates monitoring.

If you would like to learn more you can download the complete Wetland Monitoring Program [here](#).

Our work schedule

Work started in early May and it will take around two months to build the diversion.

We will maintain an environmental exclusion zone around the wetland. Once construction work has been completed, the wetland will be restored.

There will also be a new bridge constructed over the pond.

Design & guidelines

All our work will be undertaken in accordance with strict Transport for New South Wales specifications, as well as plans approved by the Department of Planning and Environment (DPE).

The Urban Design and Landscape Plan (UDLP) is currently being developed and will be released for community consultation early next year. This UDLP will outline what Bicentennial Park will look like in the final design.

Contact us

If you have any questions or would like more information please contact our project team:



1800 789 297



info@M6Stage1.com.au



nswroads.work/M6portal



PO Box 7261
Alexandria NSW 2015



If you need help understanding this information, please contact the Translating and Interpreting Service on 131 450 and ask them to call us on 1800 789 297.