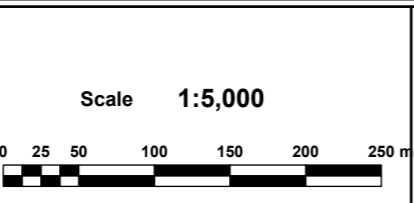
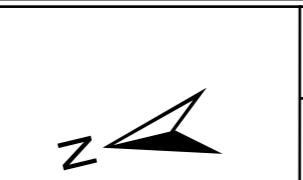


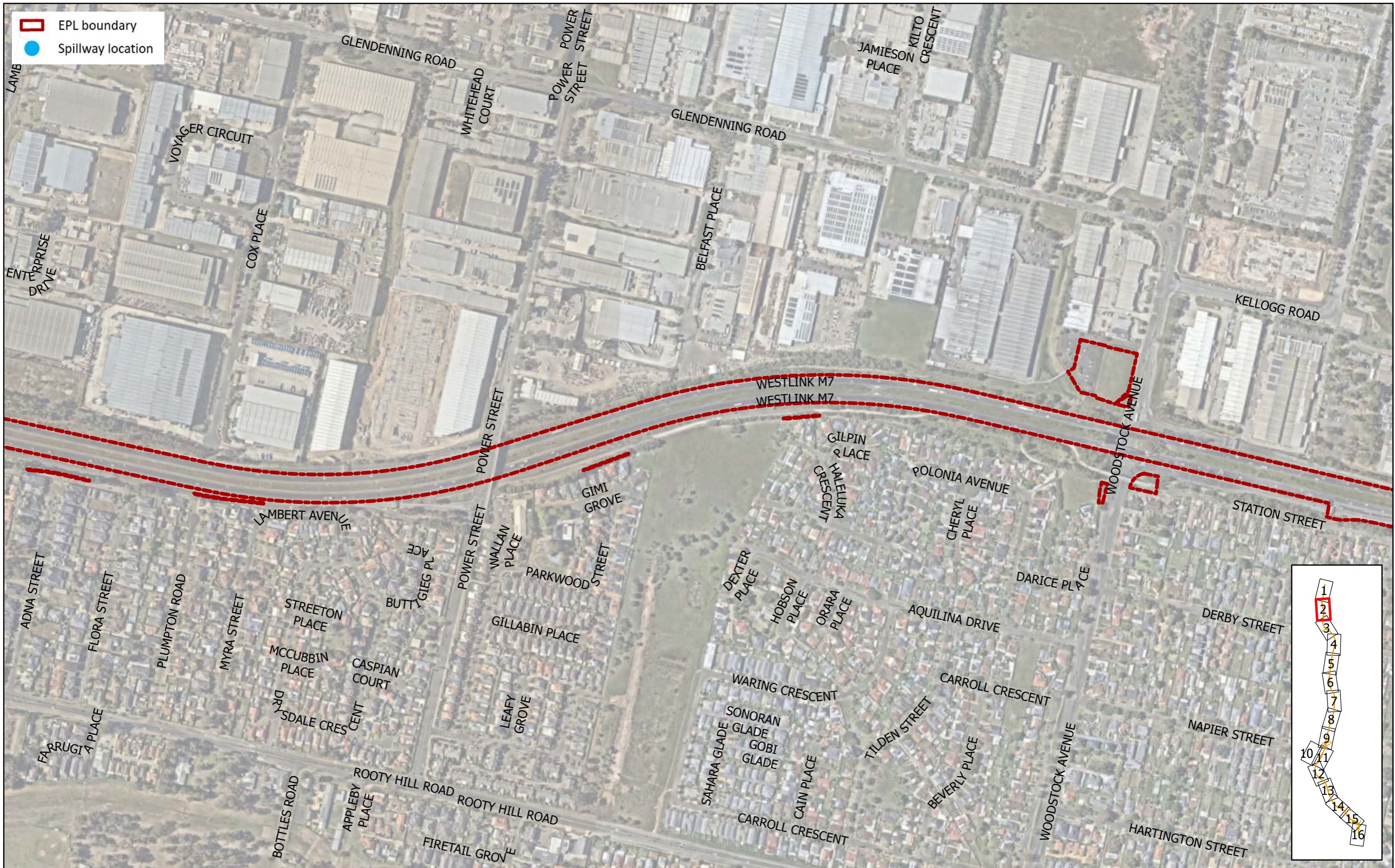
Rev	Description	Date	Approved



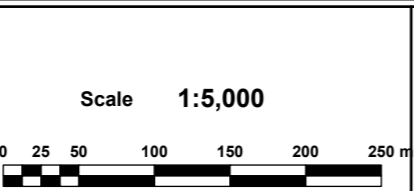
Status			
FOR REVIEW			
Original Size	A3	Drawn	GIS
Coordinate System	MGA ZONE 56	Designed	jg
Height Datum	AHD	Date Printed	27/11/2023
Filename:	Enviro_Constraint_Mapping-M7.aprx		



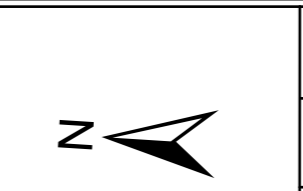
M7 Widening - Sensitive Area Plan			
Page 1 of 16			
EPL 21829			
Project Number	Discipline	Document	Rev
			6



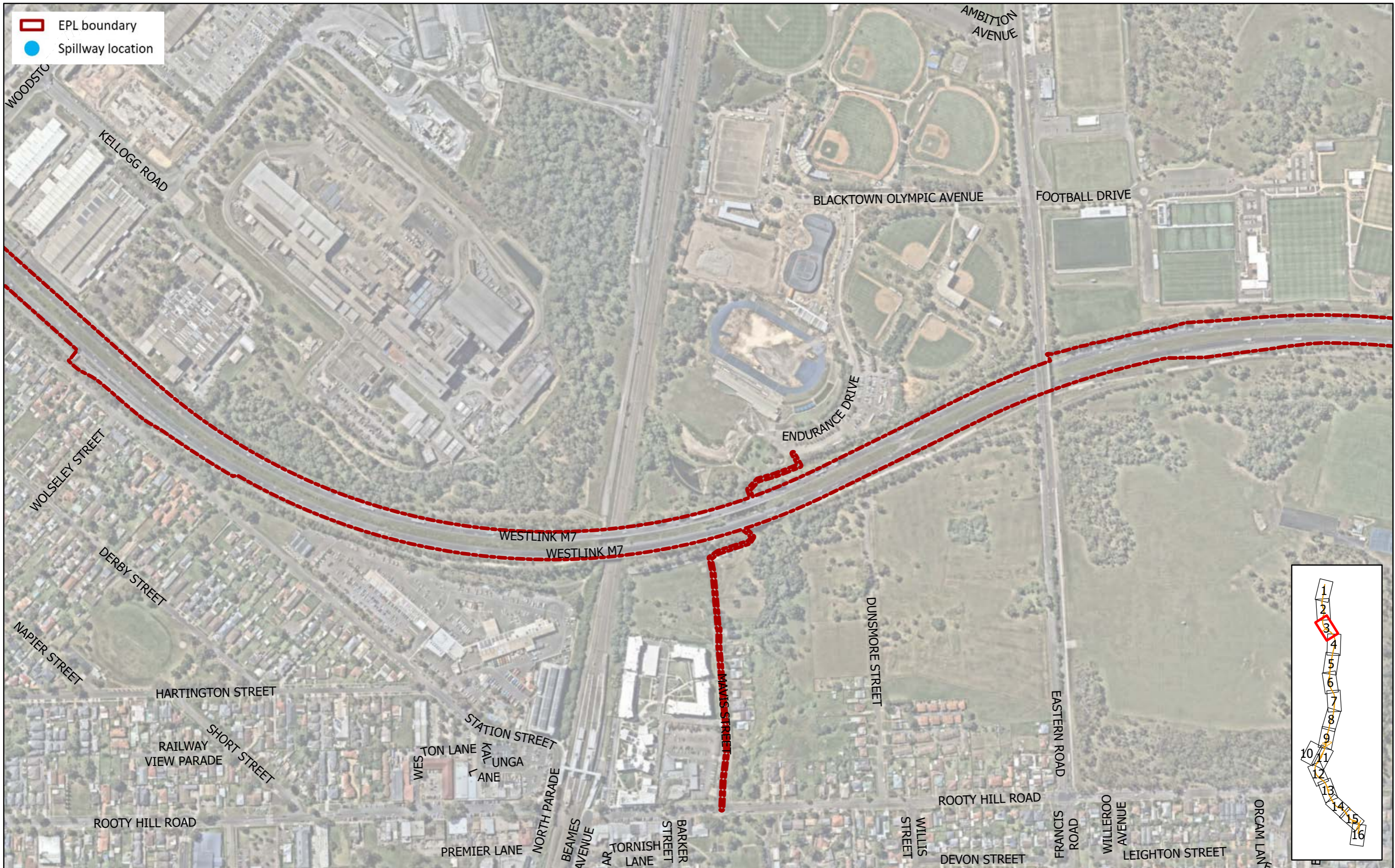
Rev	Description	Date	Approved



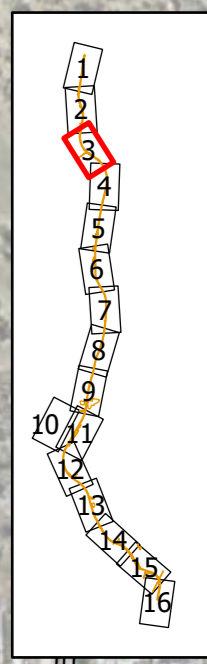
Status			
FOR REVIEW			
Original Size	A3	Drawn	GIS
Coordinate System	MGA ZONE 56	Designed	jg
Height Datum	AHD	Date Printed	27/11/2023
Filename:	Enviro_Constraint_Mapping-M7.aprx		



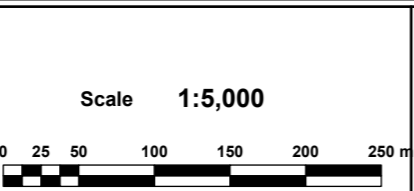
M7 Widening - Sensitive Area Plan			
Page 2 of 16			
EPL 21829			
Project Number	Discipline	Document	Rev 6



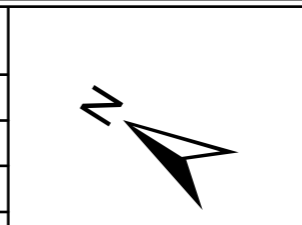
EPL boundary
● Spillway location



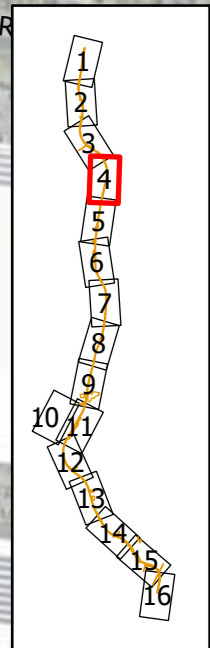
Rev	Description	Date	Approved



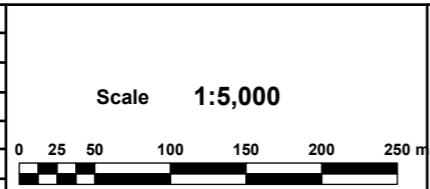
Status			
FOR REVIEW			
Original Size	A3	Drawn	GIS
Coordinate System	MGA ZONE 56	Designed	jg
Height Datum	AHD	Date Printed	27/11/2023
Filename:	Enviro_Constraint_Mapping-M7.aprx		



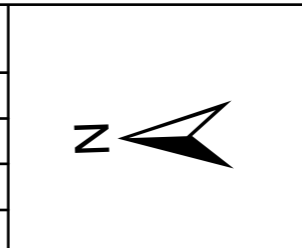
M7 Widening - Sensitive Area Plan			
Page 3 of 16			
EPL 21829			
Project Number	Discipline	Document	Rev 6





Rev	Description	Date	Approved

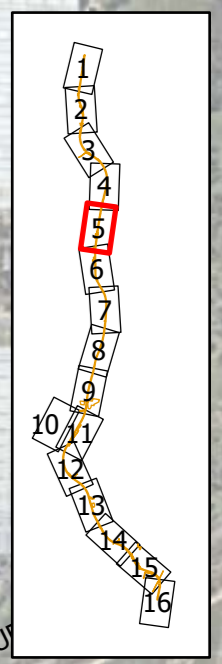
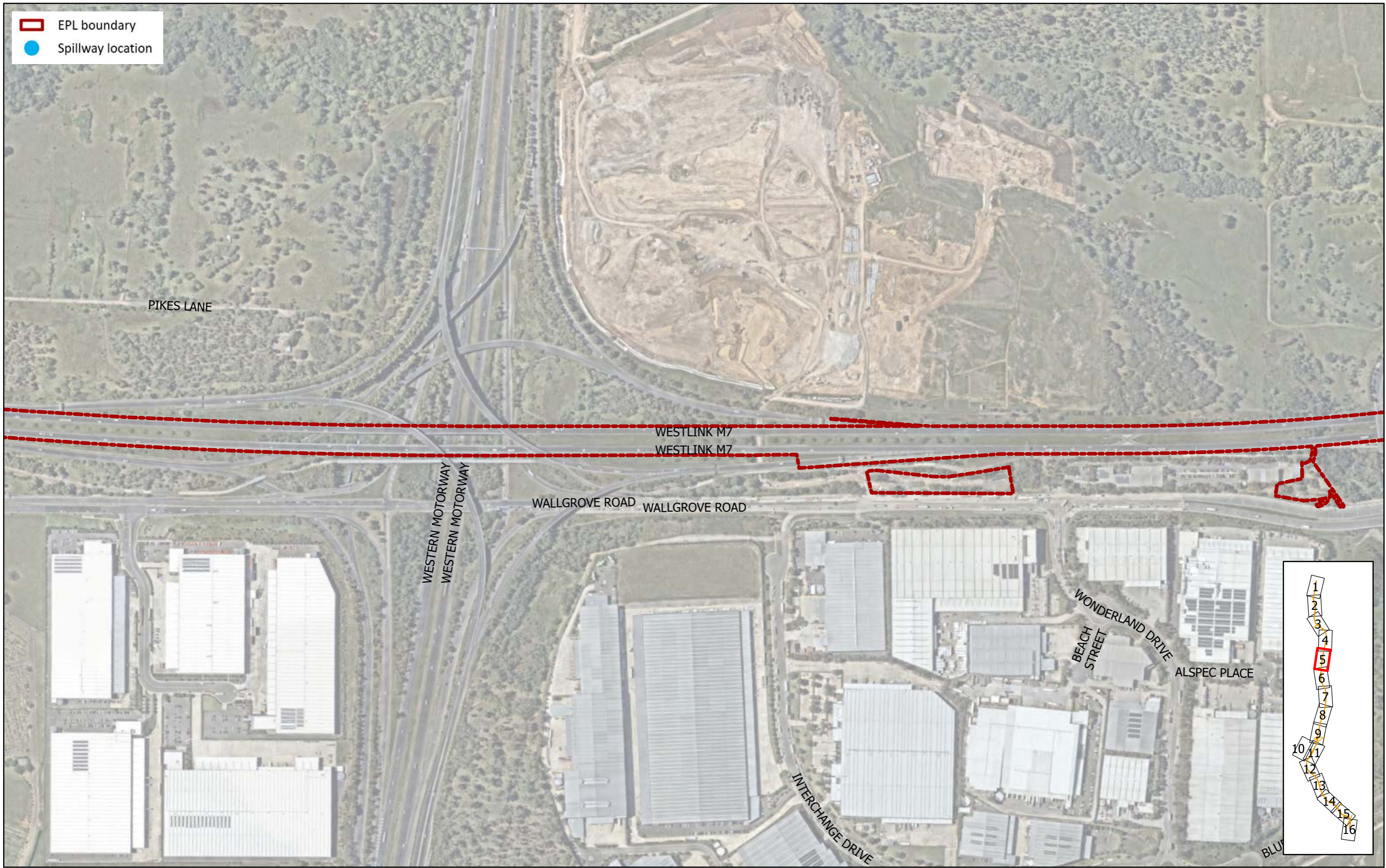


Status			
FOR REVIEW			
Original Size	A3	Drawn	GIS
Coordinate System	MGA ZONE 56	Designed	jg
Height Datum	AHD	Date Printed	27/11/2023
Filename:	Enviro_Constraint_Mapping-M7.aprx		

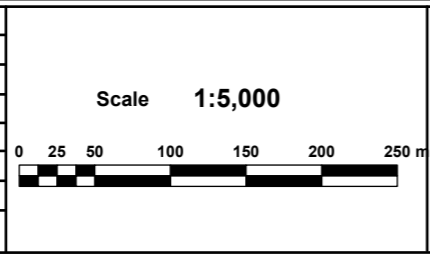


M7 Widening - Sensitive Area Plan			
Page 4 of 16			
EPL 21829			
Project Number	Discipline	Document	Rev
			6

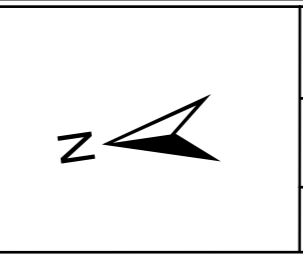
 EPL boundary
 Spillway location





Rev	Description	Date	Approved

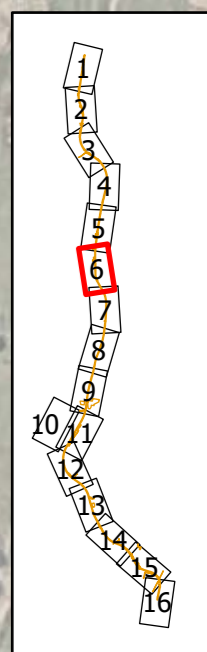
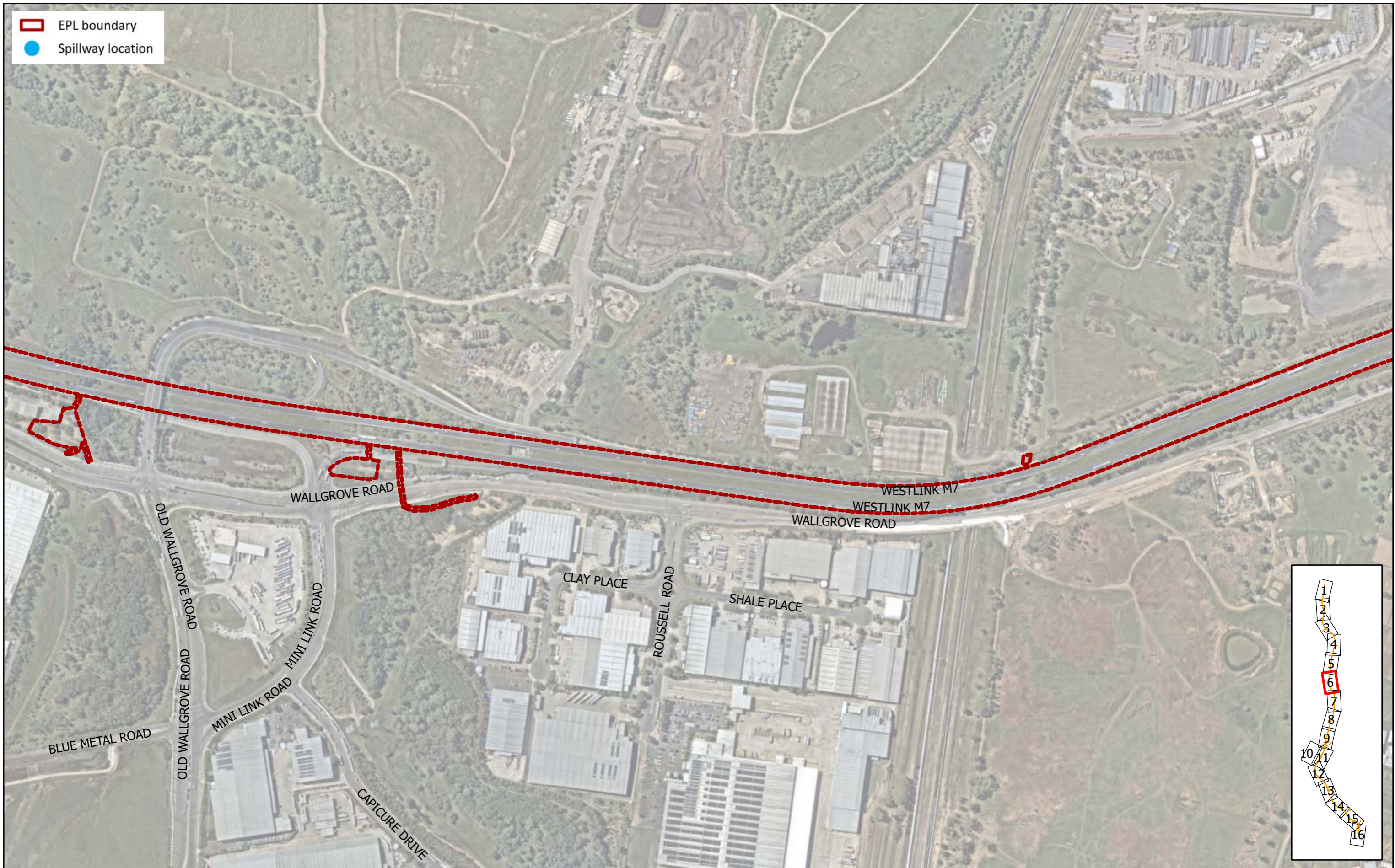


Status			
FOR REVIEW			
Original Size	A3	Drawn	GIS
Coordinate System	MGA ZONE 56	Designed	jg
Height Datum	AHD	Date Printed	27/11/2023
Filename:	Enviro_Constraint_Mapping-M7.aprx		

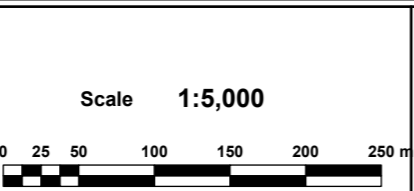


M7 Widening - Sensitive Area Plan			
Page 5 of 16			
EPL 21829			
Project Number	Discipline	Document	Rev
			6

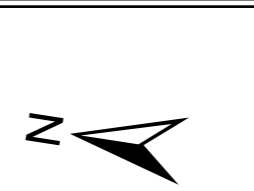
 EPL boundary
 Spillway location





Rev	Description	Date	Approved

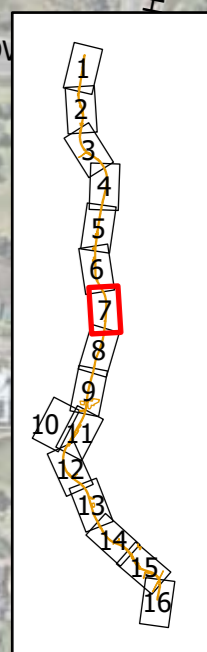
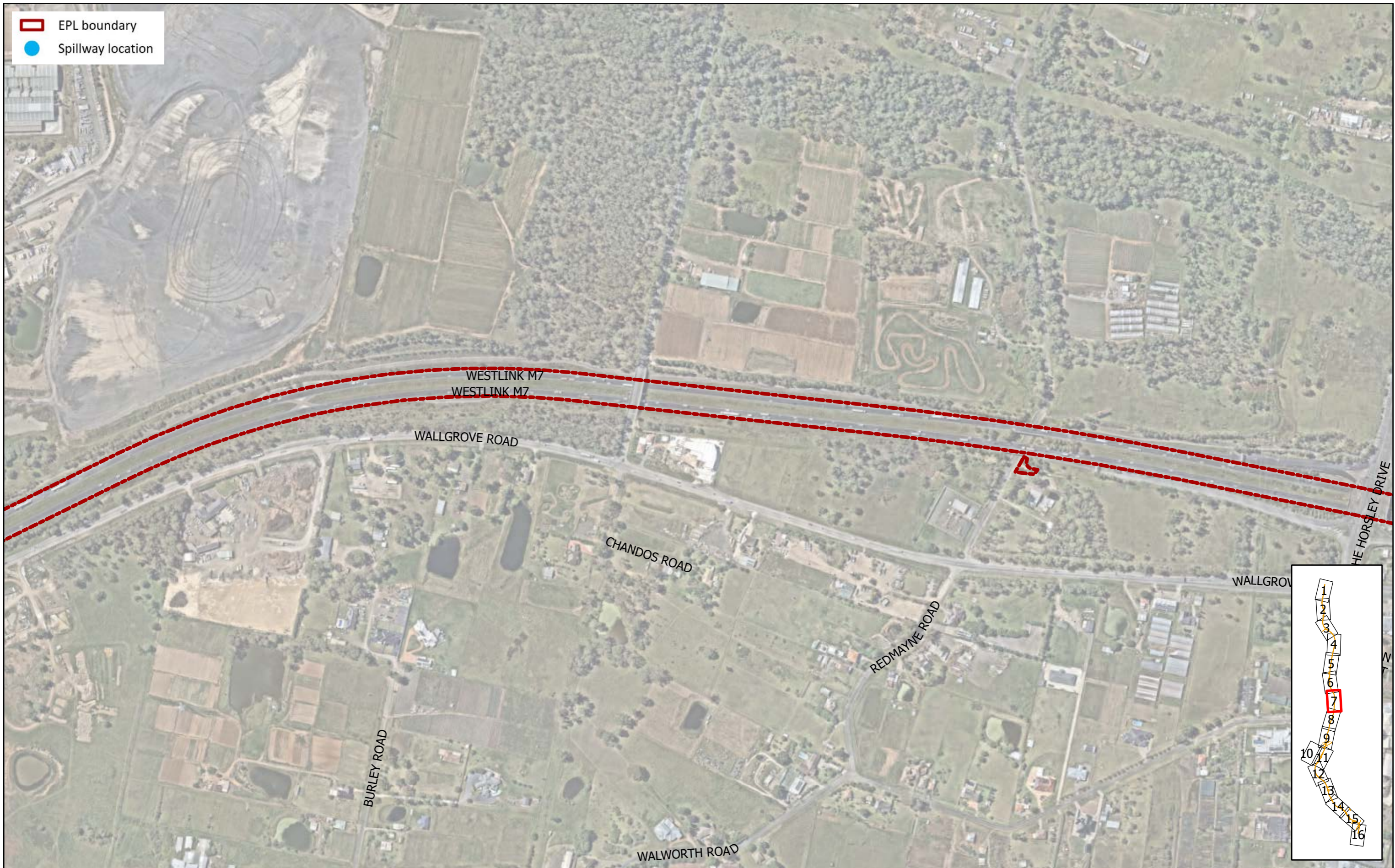


Status			
FOR REVIEW			
Original Size	A3	Drawn	GIS
Coordinate System	MGA ZONE 56	Designed	jg
Height Datum	AHD	Date Printed	27/11/2023
Filename:	Enviro_Constraint_Mapping-M7.aprx		

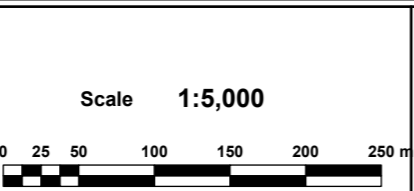


M7 Widening - Sensitive Area Plan			
Page 6 of 16			
EPL 21829			
Project Number	Discipline	Document	Rev
			6

-  EPL boundary
-  Spillway location



Rev	Description	Date	Approved

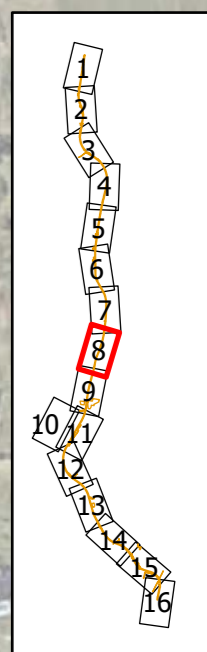
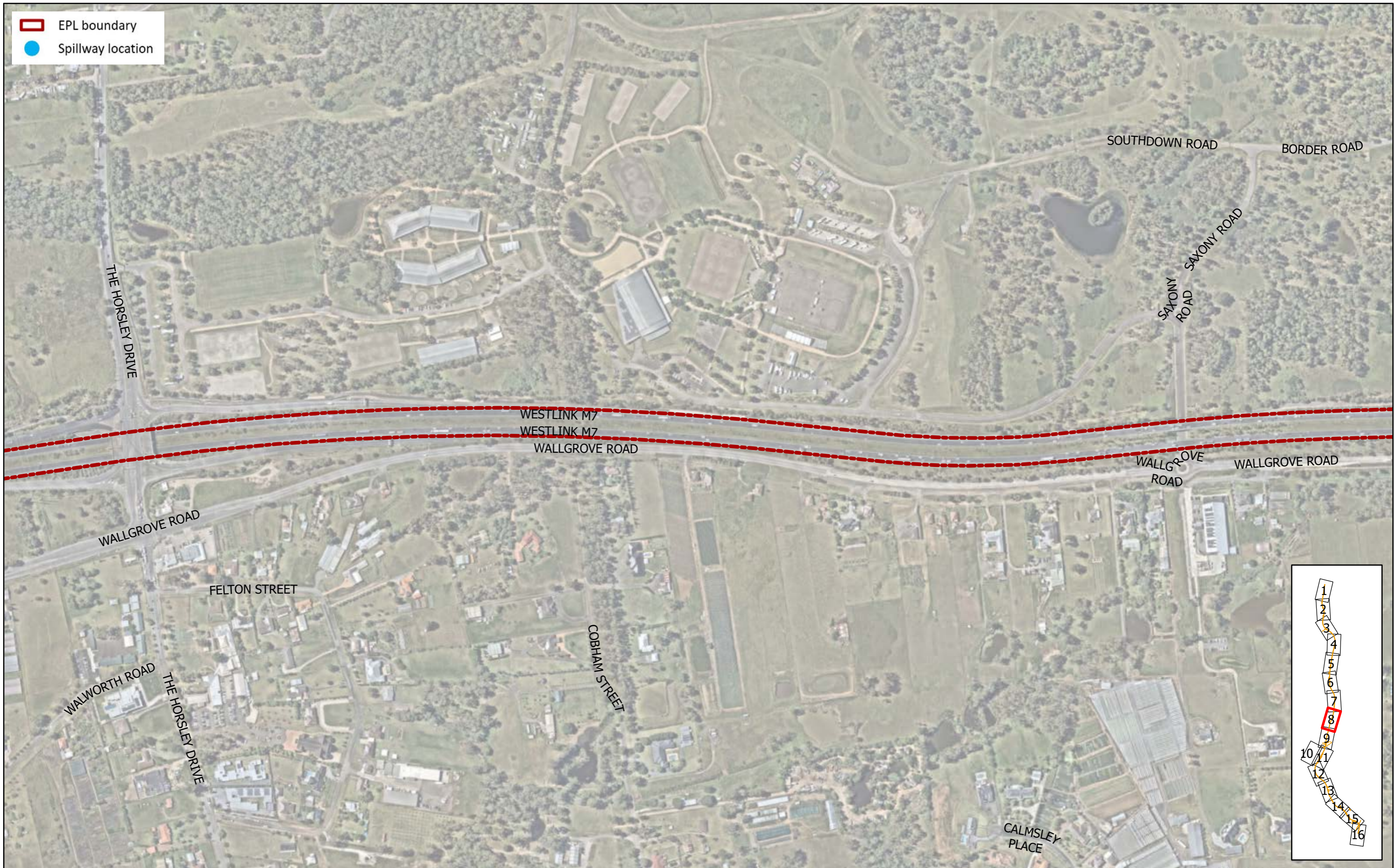


Status			
FOR REVIEW			
Original Size	A3	Drawn	GIS
Coordinate System	MGA ZONE 56	Designed	jg
Height Datum	AHD	Date Printed	27/11/2023
Filename:	Enviro_Constraint_Mapping-M7.aprx		

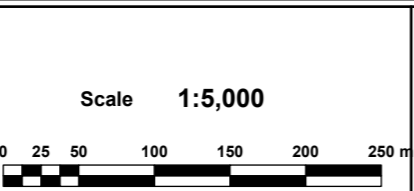


M7 Widening - Sensitive Area Plan			
Page 7 of 16			
EPL 21829			
Project Number	Discipline	Document	Rev
			6

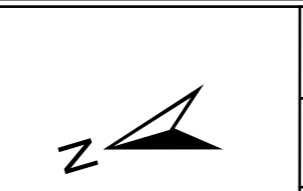
EPL boundary
● Spillway location



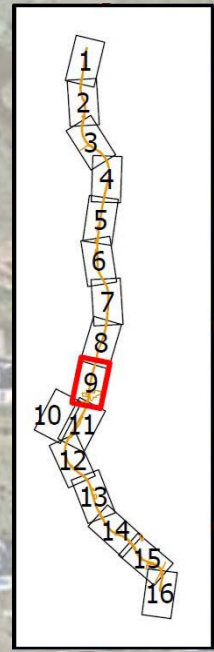
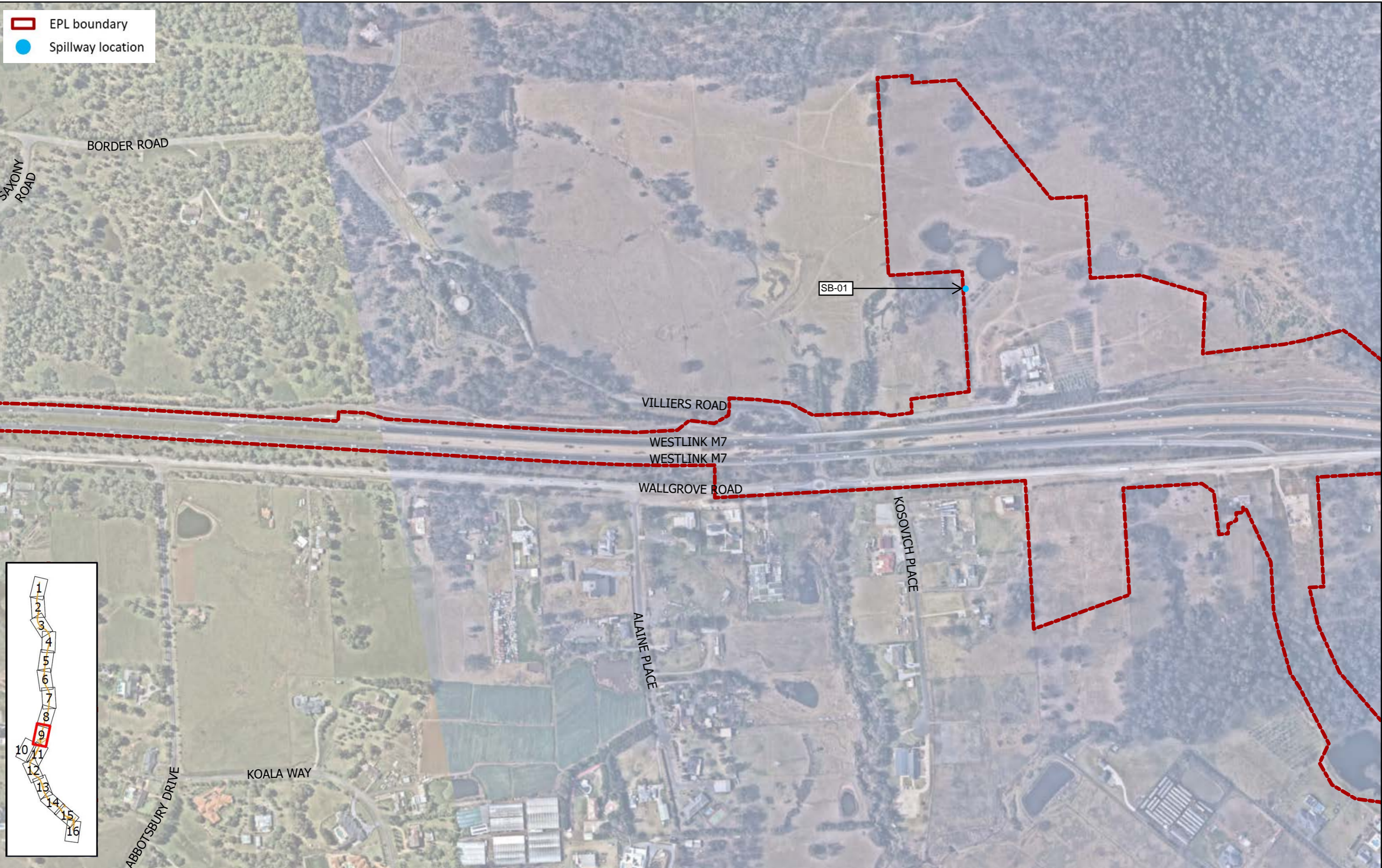
Rev	Description	Date	Approved



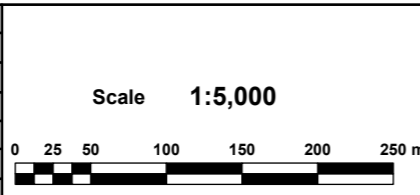
Status			
FOR REVIEW			
Original Size	A3	Drawn	GIS
Coordinate System	MGA ZONE 56	Designed	jg
Height Datum	AHD	Date Printed	27/11/2023
Filename:	Enviro_Constraint_Mapping-M7.aprx		



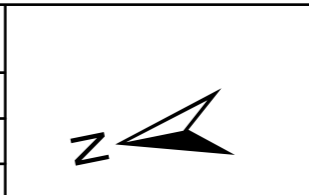
M7 Widening - Sensitive Area Plan			
Page 8 of 16			
EPL 21829			
Project Number	Discipline	Document	Rev
			6



Rev	Description	Date	Approved

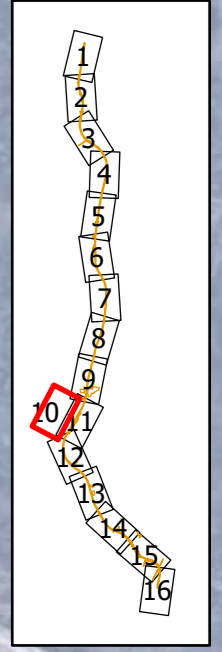


Status			
FOR REVIEW			
Original Size	A3	Drawn	GIS
Coordinate System	MGA ZONE 56	Designed	jg
Height Datum	AHD	Date Printed	27/11/2023
Filename:	Enviro_Constraint_Mapping-M7.aprx		

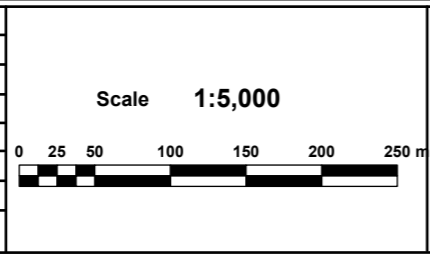


M7 Widening - Sensitive Area Plan			
Page 9 of 16			
EPL 21829			
Project Number	Discipline	Document	Rev
			6

EPL boundary
● Spillway location

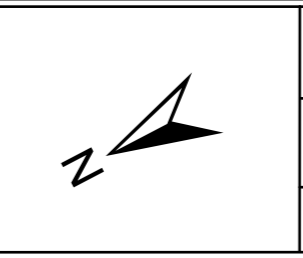


Rev	Description	Date	Approved

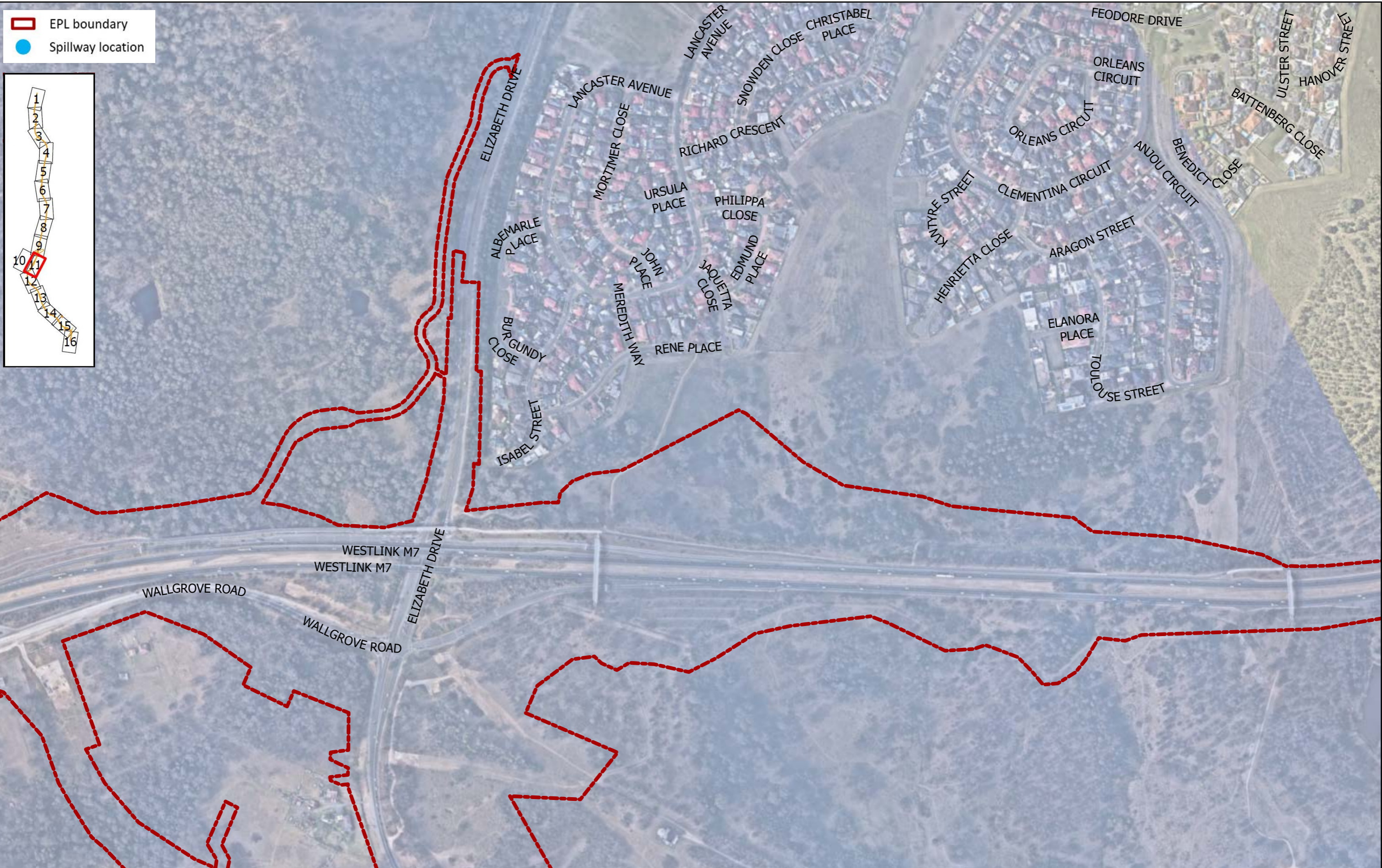


JOHN HOLLAND
Jacobs **SMC**
Member of the Surbana Jurong Group

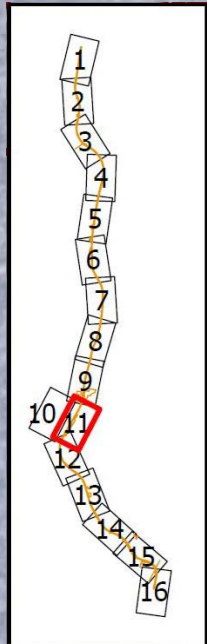
Status			
FOR REVIEW			
Original Size	A3	Drawn	GIS
Coordinate System	MGA ZONE 56	Designed	jg
Height Datum	AHD	Date Printed	27/11/2023
Filename:	Enviro_Constraint_Mapping-M7.aprx		



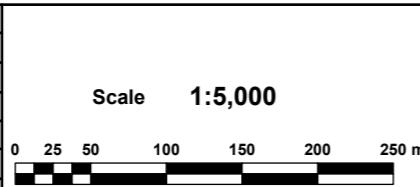
M7 Widening - Sensitive Area Plan			
Page 10 of 16			
EPL 21829			
Project Number	Discipline	Document	Rev
			6



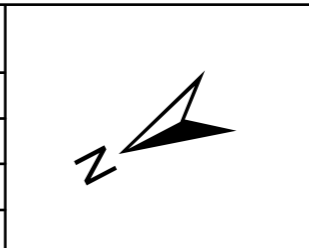
EPL boundary
● Spillway location



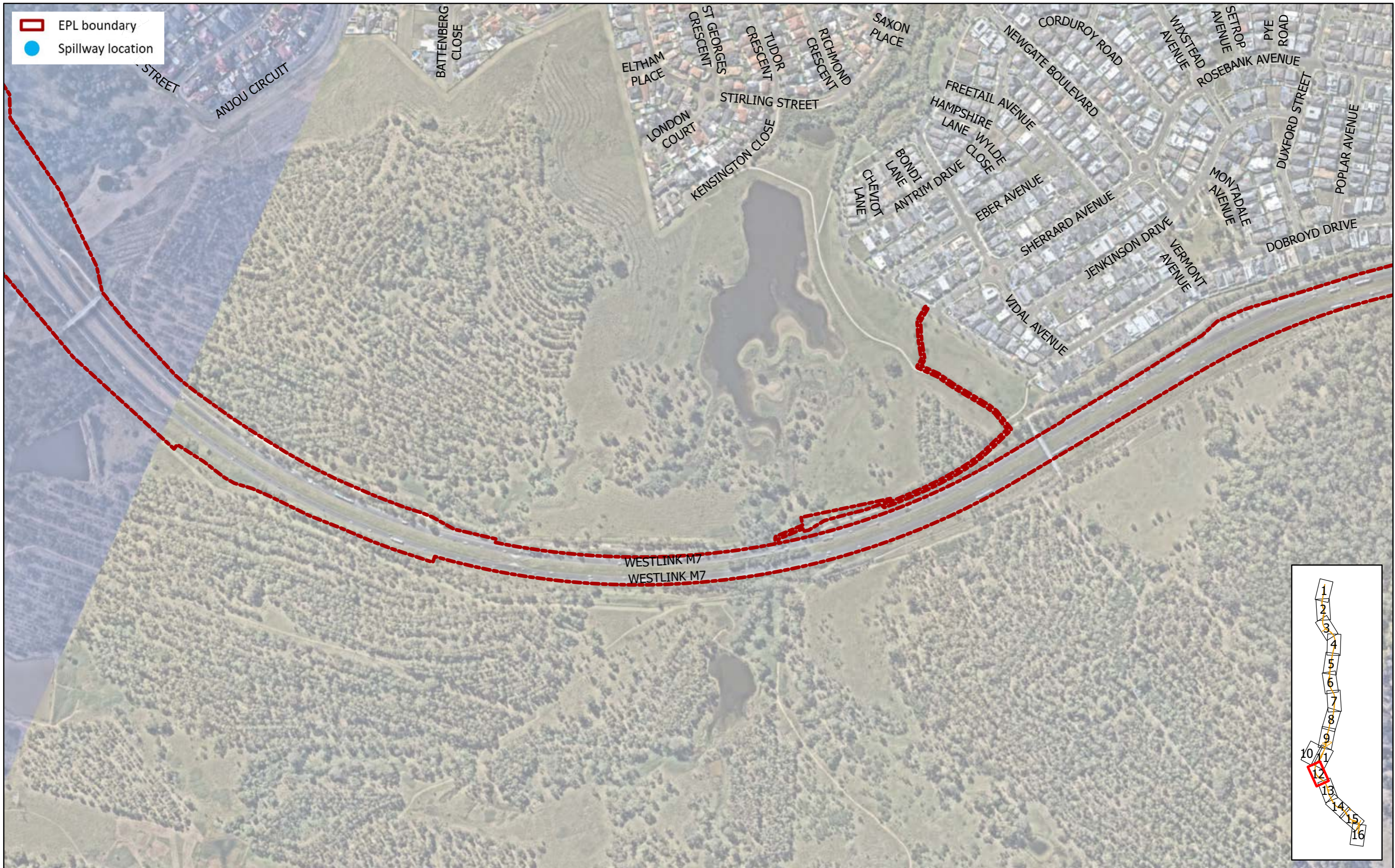
Rev	Description	Date	Approved



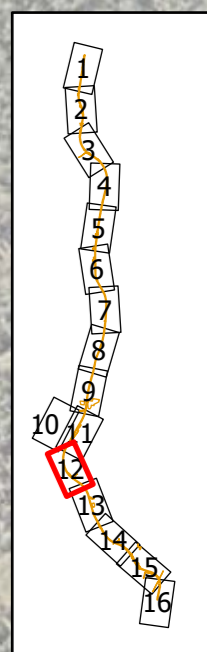
Status			
FOR REVIEW			
Original Size	A3	Drawn	GIS
Coordinate System	MGA ZONE 56	Designed	jg
Height Datum	AHD	Date Printed	27/11/2023
Filename:	Enviro_Constraint_Mapping-M7.aprx		



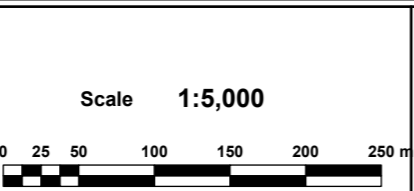
M7 Widening - Sensitive Area Plan			
Page 11 of 16			
EPL 21829			
Project Number	Discipline	Document	Rev 6



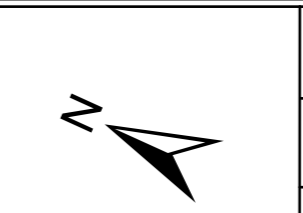
EPL boundary
● Spillway location



Rev	Description	Date	Approved



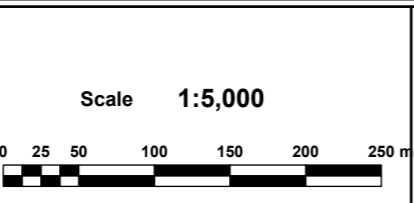
Status			
FOR REVIEW			
Original Size	A3	Drawn	GIS
Coordinate System	MGA ZONE 56	Designed	jg
Height Datum	AHD	Date Printed	27/11/2023
Filename:	Enviro_Constraint_Mapping-M7.aprx		



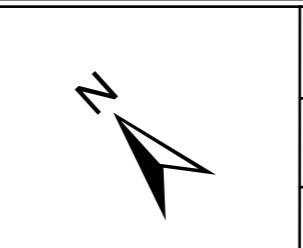
M7 Widening - Sensitive Area Plan			
Page 12 of 16			
EPL 21829			
Project Number	Discipline	Document	Rev
			6



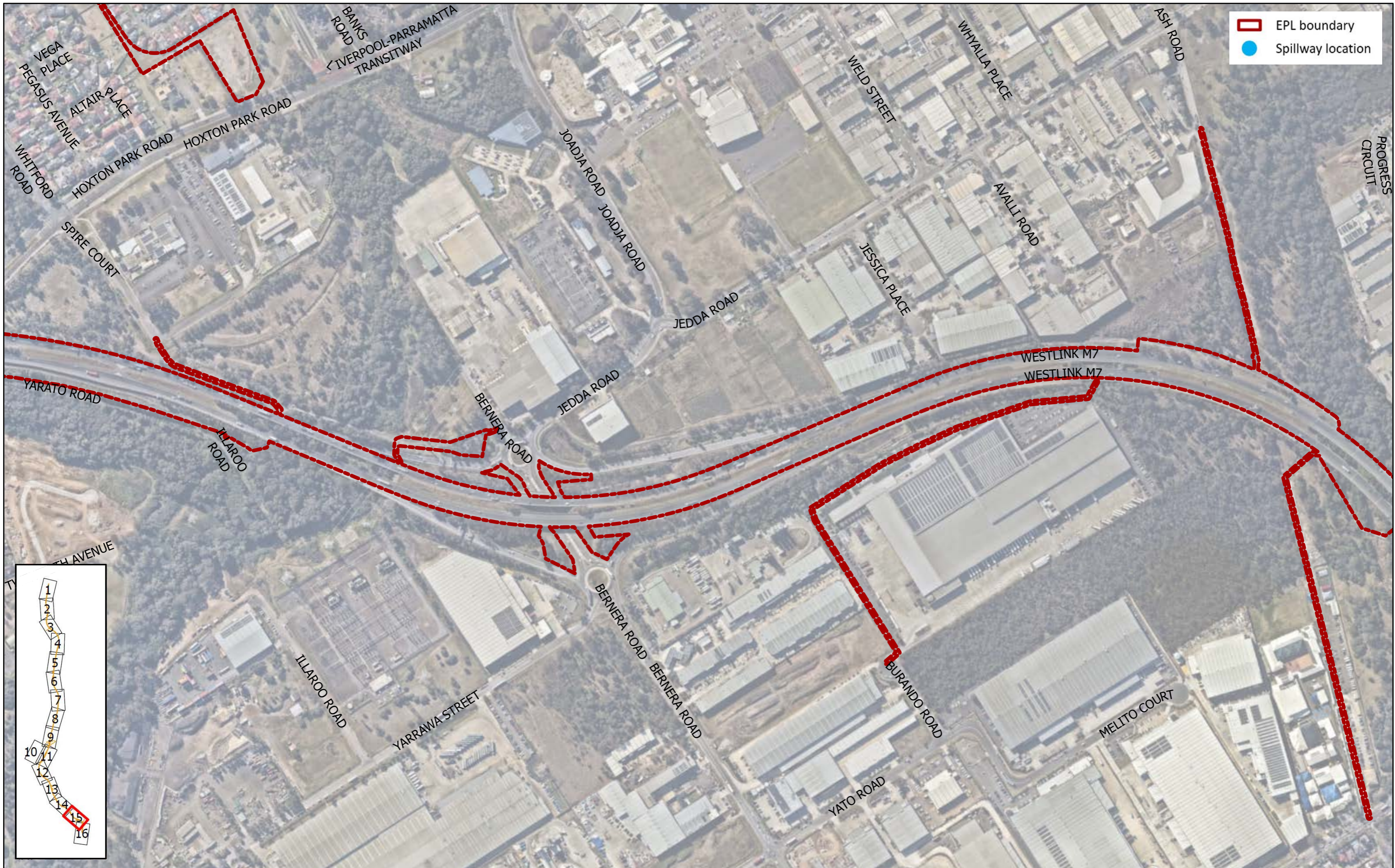
Rev	Description	Date	Approved



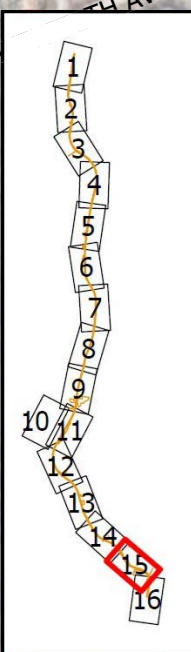
Status			
FOR REVIEW			
Original Size	A3	Drawn	GIS
Coordinate System	MGA ZONE 56	Designed	jg
Height Datum	AHD	Date Printed	27/11/2023
Filename:	Enviro_Constraint_Mapping-M7.aprx		



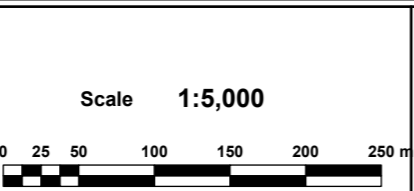
M7 Widening - Sensitive Area Plan			
Page 14 of 16			
EPL 21829			
Project Number	Discipline	Document	Rev
			6



EPL boundary
● Spillway location



Rev	Description	Date	Approved

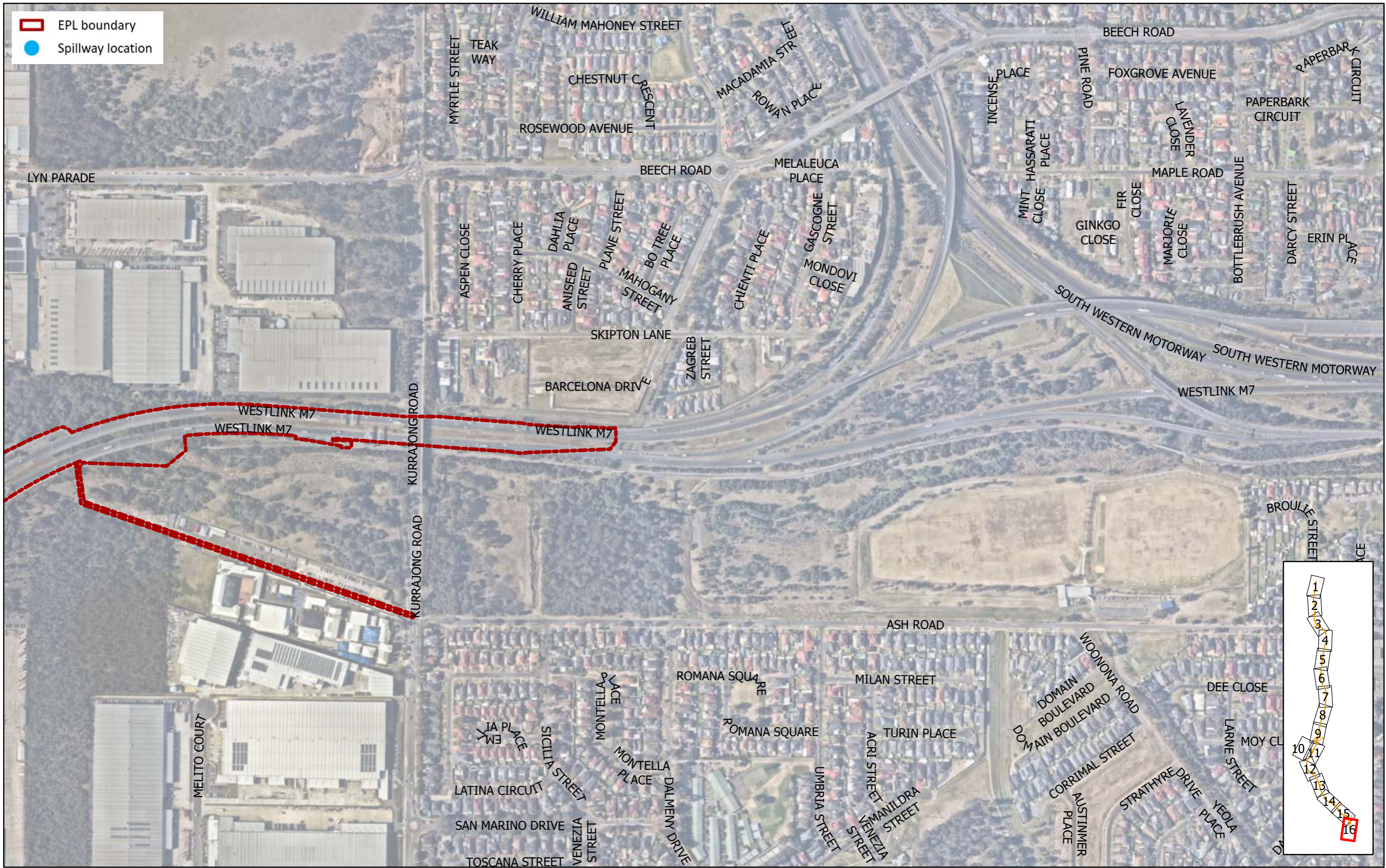


Status			
FOR REVIEW			
Original Size	A3	Drawn	GIS
Coordinate System	MGA ZONE 56	Designed	jg
Height Datum	AHD	Date Printed	27/11/2023
Filename:	Enviro_Constraint_Mapping-M7.aprx		

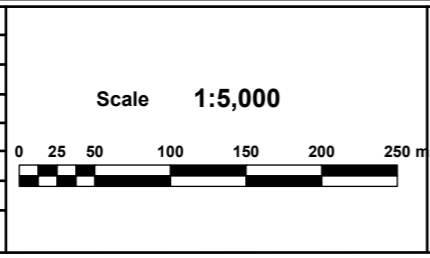


M7 Widening - Sensitive Area Plan			
Page 15 of 16			
EPL 21829			
Project Number	Discipline	Document	Rev 6

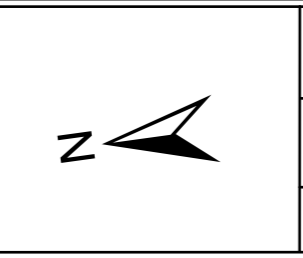
EPL boundary
● Spillway location



Rev	Description	Date	Approved



Status			
FOR REVIEW			
Original Size	A3	Drawn	GIS
Coordinate System	MGA ZONE 56	Designed	jg
Height Datum	AHD	Date Printed	27/11/2023
Filename:	Enviro_Constraint_Mapping-M7.aprx		



M7 Widening - Sensitive Area Plan			
Page 16 of 16			
EPL 21829			
Project Number	Discipline	Document	Rev
			6