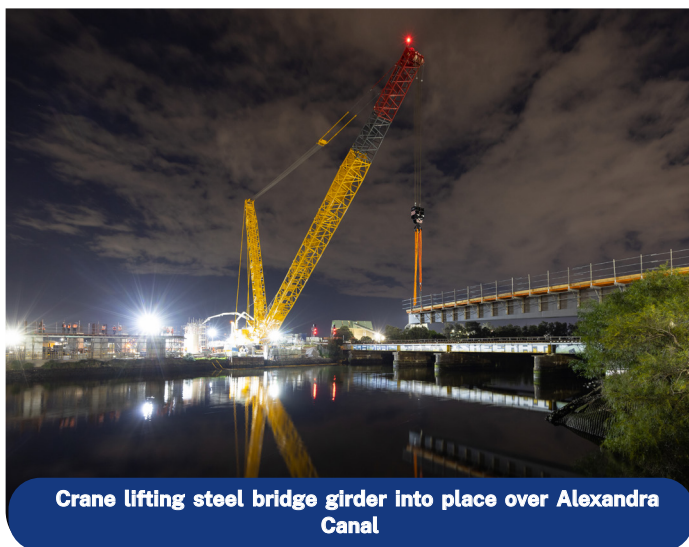


Sydney Gateway

October 2022
Project Update

Sydney Gateway will provide a new, toll-free connection from St Peters Interchange to improve journey times to Sydney Airport, the M5 and Eastern Distributor.

We're excited to announce that Sydney Gateway is now halfway through construction. Our structures and roadways are becoming visible as we continue to achieve construction milestones across the project. Along Qantas Drive, you will see girders being installed and the bridge deck forming for the new flyover into the Domestic Terminals. We have completed the first section of our road widening activities on Qantas Drive, west of Robey Street. Motorists are now being directed onto this new section of road, enabling us to set up a work site on Qantas Drive so we can continue to build the flyover.



Crane lifting steel bridge girder into place over Alexandra Canal

What is in this update?

- What's happening onsite?
- How have we been managing the wet weather
- Sydney Gateway and the community?
- What's happening next on Sydney Gateway?

A word from the Transport for NSW Project Director

I've had the honour of being Transport for NSW Project Director for Sydney Gateway since 2020, and what an experience it's been.

Most recently our project celebrated 50% completion - this huge milestone is testament to our workforce, out on site and behind the scenes.

Our local communities have been at the centre of all the work we do, which is an important part of our success since the project was announced in 2018.

As you move around the project area you can see our 19 bridges taking shape. Working in such an iconic area presents a number of challenges, which we continue to work through to help deliver this critical piece of infrastructure. Our team recently held an online event about the twin arch bridges where they discussed how the complex design and build has been tailored to the unique environment around Tempe and Alexandra Canal.

We appreciate your patience and support while we complete our work.



Vince Newton, Project Director

Look at what's been happening onsite

Mascot

If you've travelled through the airport precinct over the last few months, you would have seen the flyover well under construction on Qantas Drive and Sir Reginald Ansett Drive. We have already started construction on Sir Reginald Ansett Drive on the Departures ramp, which features Aboriginal artwork (pictured right).

We have recently completed the first section of our road widening activities on Qantas Drive, west of Robey Street. Other work in this area includes the ongoing demolition of a vacant building, utility and drainage work, line marking and vegetation removal.

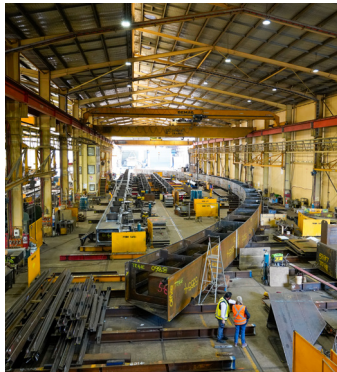
See our road widening activities in action



Tempe

Utility work is continuing along Airport Drive. We recently completed the replacement of a gas line in this area which included burn-off of residual gas in the old gas line.

We've installed the girders of two bridges, one over Alexandra Canal and one over the rail corridor. The Project Team at our Tempe site have also been busy preparing for the assembly of our twin arch bridges. Material deliveries for these bridges are now coming into our Tempe site via Nigel Love Bridge. The bridge arches are being fabricated from 100% Australian Steel by our subcontractor in Western Sydney and will be assembled onsite by our construction team. The assembly and launch of the bridges is extremely complex and needs to be done within the Obstacle Limitation Surface (OLS) that protects air traffic around the airport. The OLS is a Sydney Airport height restriction regulation stipulating that equipment such as large cranes can only operate in its assigned airspace at night when planes are not using the Airport.

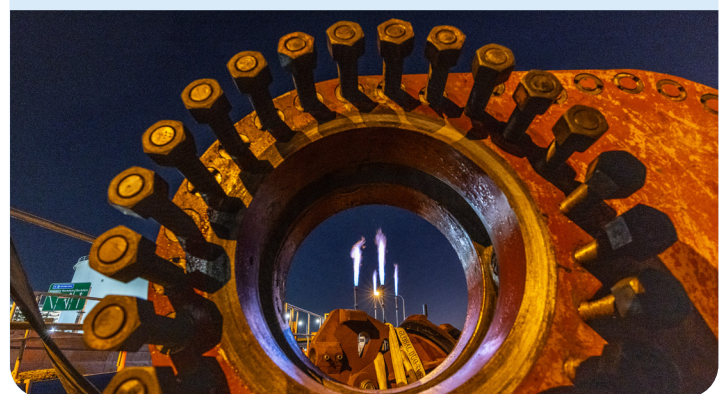
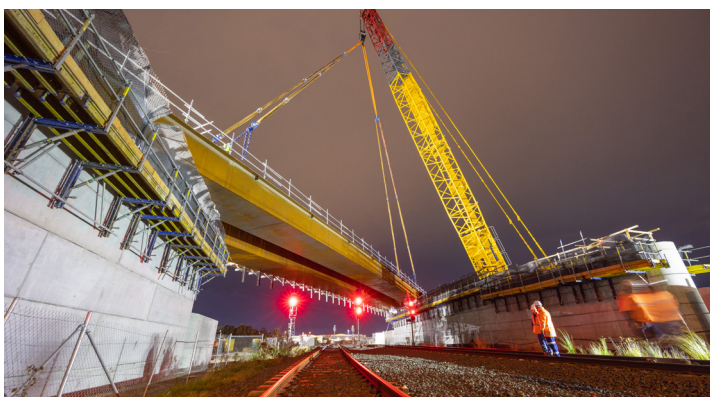


Watch our animation video of the construction and launch of these twin bridges



Did You Know?

- Gas flaring has been practised for more than 160 years.
- Flames can reach a height of approximately 7.5 metres (flames were kept at a lower limit throughout the burn off on Sydney Gateway).
- Temperatures can reach approximately 1,700 degrees Celsius at 1 metre above the tip of the flare.
- Prior to commencing the burn off, the Project Team conducted a study into 'Pilot Bedazzlement' and concluded that there would be zero effects. The flames were, however, visible from plane cockpits.
- Flames are usually invisible during the day and at night are visible and look blue.
- The project will be installing almost 1 kilometre of new gas main lines.





St Peters

The Project Team at our Northern Lands site have been busy building bridges and structures that will carry Sydney Gateway's new roads across the rail corridor, Canal Road and Alexandra Canal. You may have seen our retaining walls taking shape as you drive along Canal Road. These will form part of the bridge that will carry the roadway connecting St Peters Interchange with Sydney Gateway. Other work onsite includes preparing the new road corridor, drainage and bridge abutments on either side of the rail corridor. Onsite, we have formed up and poured one of our large concrete structures (pictured left) that will play an integral part in the road network.



See some of our bridge girders being installed over the rail corridor



It's officially Sydney's wettest year on record, what does this mean for Sydney Gateway?

The Project Team has implemented an Erosion and Sediment Control Strategy to manage and mitigate risks from water erosion during construction, to minimise the risks of pollution to nearby sensitive environments.

This involves the design and implementation of site-specific and progressive erosion and sediment controls, across the project, with additional controls installed prior to large rain events.

While the Project to date has already received more than twice the average annual rainfall, construction has been able to continue due to careful planning and implementation of erosion and sediment controls.

The Project Team will continue to work hard to ensure the site is prepared and ready for the next rainfall event.



Silt booms installation in Alexandra Canal



Localised controls within site to capture sediment

Out in the Community

Bayside Spring Fair

The Sydney Gateway Community Team had a presence at the Bayside Spring Fair, held at Jack Munday Reserve on Saturday 11 September 2022. The Spring Fair celebrated the cultural diversity in the Bayside community with culinary delights, arts and crafts, live music and information stalls about local services. An estimated 4000 to 5000 people attended the Fair throughout the day.

The most common question put to the team was whether the new road would incur a toll? Sydney Gateway is a toll-free connection from St Peters Interchange to the International and Domestic Terminals and beyond.

We also hosted pop-up displays at the Domestic Terminals and at Mascot Library.

To get more information on where you can meet the Community Relations Team and learn more about construction activities in the Tempe, St Peters and Mascot areas, be sure to scan the QR code and register for our updates.



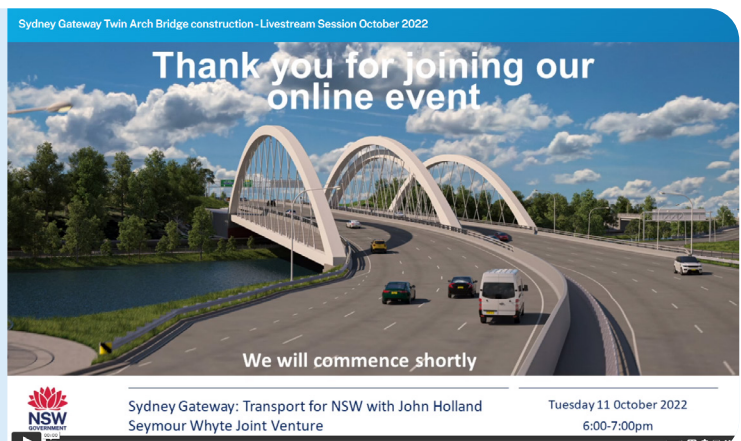
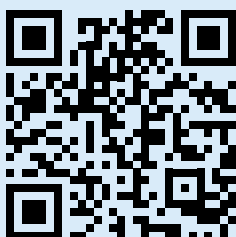
If you would like stay up to date and learn more about our upcoming work, scan the QR code and register for email updates



Online community event – twin arch bridges livestream

We recently held a livestream community event where our Construction Team showed an animation and presented how they will build and launch the twin arch bridges. This included information about how we will reduce construction impacts for the community.

View a recording of the livestream on our Portal



What's happening next on Sydney Gateway?



In the coming months we will continue to build the 19 bridges across the project including the flyover into the Domestic Terminals. The Departures ramp into the Domestic Terminals is already taking shape and we have set up a work site on Sir Reginald Ansett Drive, which will enable us to start building the Arrivals ramp. Deliveries and headstock installations will continue, including the large headstock that will support the flyover across Sir Reginald Ansett Drive before it separates into the Departure and Arrival flyover sections.

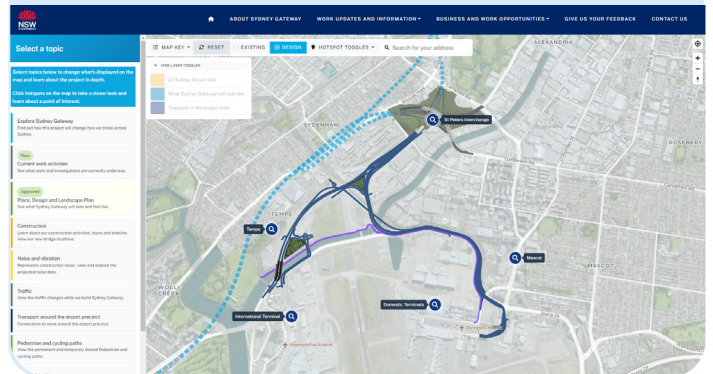
Once complete, the new flyover will be close to 800 metres long and carry traffic from Qantas Drive directly into the Domestic Terminals, separating these motorists from vehicles moving to Mascot and towards Port Botany.

Work will also continue at our St Peters and Tempe sites, including our work along Canal Road and over the rail corridor.

Safety is our priority

As the world emerges from COVID-19 restrictions and lockdowns, we are mindful of the increasing traffic presence around the Airport precinct. To keep you and our workers safe, we have footpath, road and lane changes in place whilst we carry out our work. Please plan ahead and follow the direction of traffic controllers and signage.

Scan the QR code to view our current work activities on our interactive map



For enquiries or complaints:

 nswroads.work/SydneyGateway

 1800 654 446 (24/7)

 SydneyGateway@jhs.com.au



Translating and interpreting service

If you need help understanding this information, please contact the Translating and Interpreting Service on 131 450 and ask them to call us on 1800 654 446.