

Transport for NSW

Connecting the Western Sydney Airport Precinct

Our 30-year strategic vision for city-shaping,
integrated transport

November 2023



Acknowledgement of Country

We acknowledge and pay our respects to the Traditional Custodians of Country within the Western Sydney Airport Precinct, the Dharug people.

We extend that respect to many others who hold custodial obligations and connections with Country in the Airport Precinct and surrounds, including the Dharawal and Gundungurra people.

We also acknowledge the vibrant and diverse Aboriginal population who call Western Sydney home.

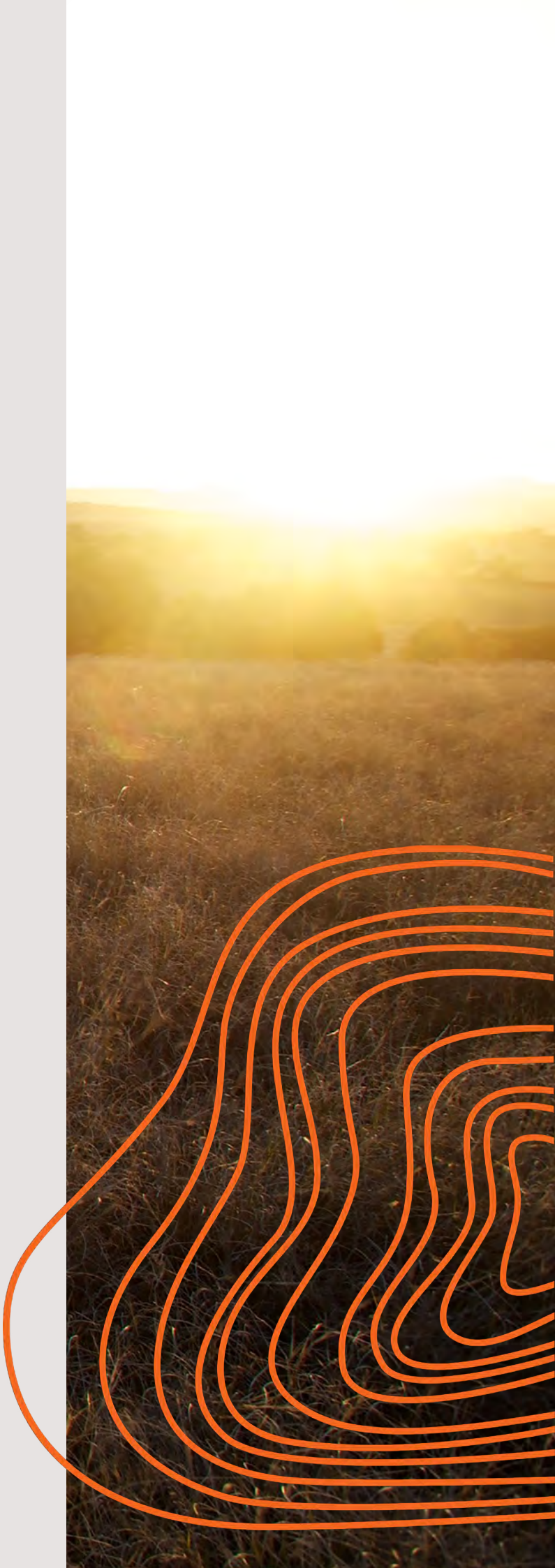



Table of contents

1 Introduction	5
Message from the NSW Minister for Transport	5
Message from the NSW Minister for Roads	6
Message from the Transport for NSW Secretary	7
About the 30-year strategic vision	8
2 The Western Sydney Airport Precinct story	10
Western Sydney is undergoing significant change	10
Transport is enabling growth across Western Sydney	12
Creating Connections	13
Travel needs and community expectations are changing	14
3 Our vision	17
An integrated public transport network	17
What transport will look like in the Western Sydney Airport Precinct	18
Who we're delivering for	20
What we're working towards	22
4 Our eight strategic focus areas	24
Strategic focus areas requiring special attention	25
5 How we will deliver	30
Our approach to achieving our vision	30
Setting out on our journey	32
Transport's role in the planning process	32
6 Contact us	33





Transport can bring positive change
to the people of Western Sydney

1

Introduction



Message from the NSW Minister for Transport

Transport isn't just a service. It is far more than that. Transport is a crucial enabler of a strong economy and social equity for the people of NSW.

That is why, as we embark on our mission to deliver the biggest city-shaping program in Australia – the Western Sydney Airport Precinct – we must direct our efforts and investment towards delivering transformational change for the people of Western Sydney.

As Minister for Transport, I am proud to introduce you to *Connecting the Western Sydney Airport Precinct* – our 30-year strategic vision. It outlines our long-term plan to activate the Airport Precinct and make people's lives better through a fully integrated and easy-to-navigate transport network. We have an opportunity to create a reliable transport network that will connect people to housing, jobs and economic opportunities, and bring equity to Western Sydney.

Our vision will take time to achieve, and we'll need to be smart about where we channel our investment for the next 30 years. Prioritising development in the Airport Precinct as well as in the broader Western Parkland City in which it sits will enable better jobs, nurture emerging industries and accelerate local economic development.

Our Strategic Vision guides us to create and shape a place where public transport is the obvious choice, not a last resort. Transport can bring positive change to the people of Western Sydney and I look forward to sharing our progress with you throughout this journey.

The Hon. Jo Haylen, MP
NSW Minister for Transport

Aerial view of the M12 Motorway
looking east towards the interchange



Message from the NSW Minister for Roads

As Western Sydney undergoes significant change, the Western Sydney Airport Precinct presents a great opportunity to develop a smart, connected city.

At the heart of this transformation lies efficient, safe and accessible roads. Investment in roads now and over the coming decades is critical as they are the enablers of our integrated transport strategy in the Airport Precinct, seamlessly accommodating many modes of travel from buses to freight to cycling or walking.

As we expand the transport network, safety on our roads as well as safe access to roads will always be a top priority for this Government alongside the surge in construction and managing the movement of freight in the coming years.

As we work in partnership with industry and across government to deliver the transport needs for the Airport Precinct, we do so with a commitment to work collaboratively with the communities we serve.

Western Sydney is one of the most diverse and multicultural places in Australia and I am confident the evolving Airport Precinct will further enrich its social and cultural landscape. I'm excited to see how this new city comes to life.

The Hon. John Graham, MLC
NSW Minister for Roads

I am confident the Western Sydney Airport Precinct will further enrich Western Sydney's social and cultural landscape



Message from the Transport for NSW Secretary

Welcome to *Connecting the Western Sydney Airport Precinct*, our 30-year strategic vision to deliver an integrated public transport network for this new and evolving precinct in Western Sydney.

The Western Sydney Airport Precinct, centred around the Western Sydney International (WSI) Airport, will become the largest industrial complex in the southern hemisphere and operate 24 hours a day.

Put simply, easier and better access to local public transport options can change the way people live, work and thrive in their community. The transport we deliver in the Airport Precinct will connect people to jobs closer to home, new housing, social and cultural opportunities in neighbouring areas and essential services.

There will be a new Sydney Metro service running from St Marys to Bradfield City Centre via WSI Airport, local bus routes, upgraded roads with accessible walking and cycling paths, and connections to the Western Sydney Parklands. This will change the need for people to travel long distances to get to work, home, appointments, to see their family or for education or training. We are working to provide first-choice travel options that are cost-effective and make sense for people that live in Western Sydney.

It is critical that we set a clear direction for ourselves, our partners and the people we're delivering for. In this document, we share the outcomes we are striving towards in the Airport Precinct and the areas we will focus on to get us there. A significant amount of investment is needed to bring the Airport Precinct to life—but we're building the foundations of an integrated public transport network now to bring equity, choice and opportunity to Western Sydney in the decades ahead.

Josh Murray
Secretary, Transport for NSW

Aerial shot of warehousing development along Mamre Road

About the 30-year strategic vision

Connecting the Western Sydney Airport Precinct: our 30-year strategic vision for city-shaping, integrated transport (the Strategic Vision) presents Transport for NSW's (Transport's) approach to meeting the transport needs of communities in the Airport Precinct over the next 30 years and beyond.

The Strategic Vision is a guide for the general public, community groups, developers, industry and government to understand what transport will look like in the Airport Precinct and how freight networks, roads, metro, buses and active transport will continue to connect and evolve.

The Strategic Vision shows how we will achieve our three primary outcomes and how communities will connect to and travel within the Airport Precinct

We've aligned our Strategic Vision with NSW Government priorities for Western Sydney, including access to affordable housing and jobs, and more public transport options for people living in the area.

We have a role in shaping Australia's newest city, Bradfield City Centre, as well as supporting WSI Airport and servicing the surrounding industrial, agricultural, education and economic hubs. The Strategic Vision steps out how we will achieve our three primary outcomes, inform transport planning and decision-making, and how communities and surrounding metropolitan centres will connect to, and interact with, the Airport Precinct.

The Strategic Vision builds upon work in the Greater Cities Commission's Metropolis of Three Cities Plan, the Western Parkland City Blueprint, the NSW Department of Planning and Environment's Western Sydney Aerotropolis Precinct Plan, and our Future Transport Strategy.



Fifteenth Avenue looking west from Kirkpatrick Park



Badgerys Creek Road

2 The Western Sydney Airport Precinct story

Western Sydney is undergoing significant change

Western Sydney is evolving at an unprecedented pace. Population growth, industrial and commercial demand, and changes in how we travel are reshaping the way people interact with their community, jobs and surrounding areas.

In 2026, the WSI Airport, Sydney Metro – Western Sydney Airport and the M12 Motorway are set to open, alongside an evolving Bradfield City Centre. Continued investment in city-shaping and precinct-making transport in the Airport Precinct and surrounds will be critical to its success. It will bring to life a new economic centre for Western Sydney, more skilled and diverse jobs to service a 24/7 economy, and better travel options for residents, visitors, workers and industry.

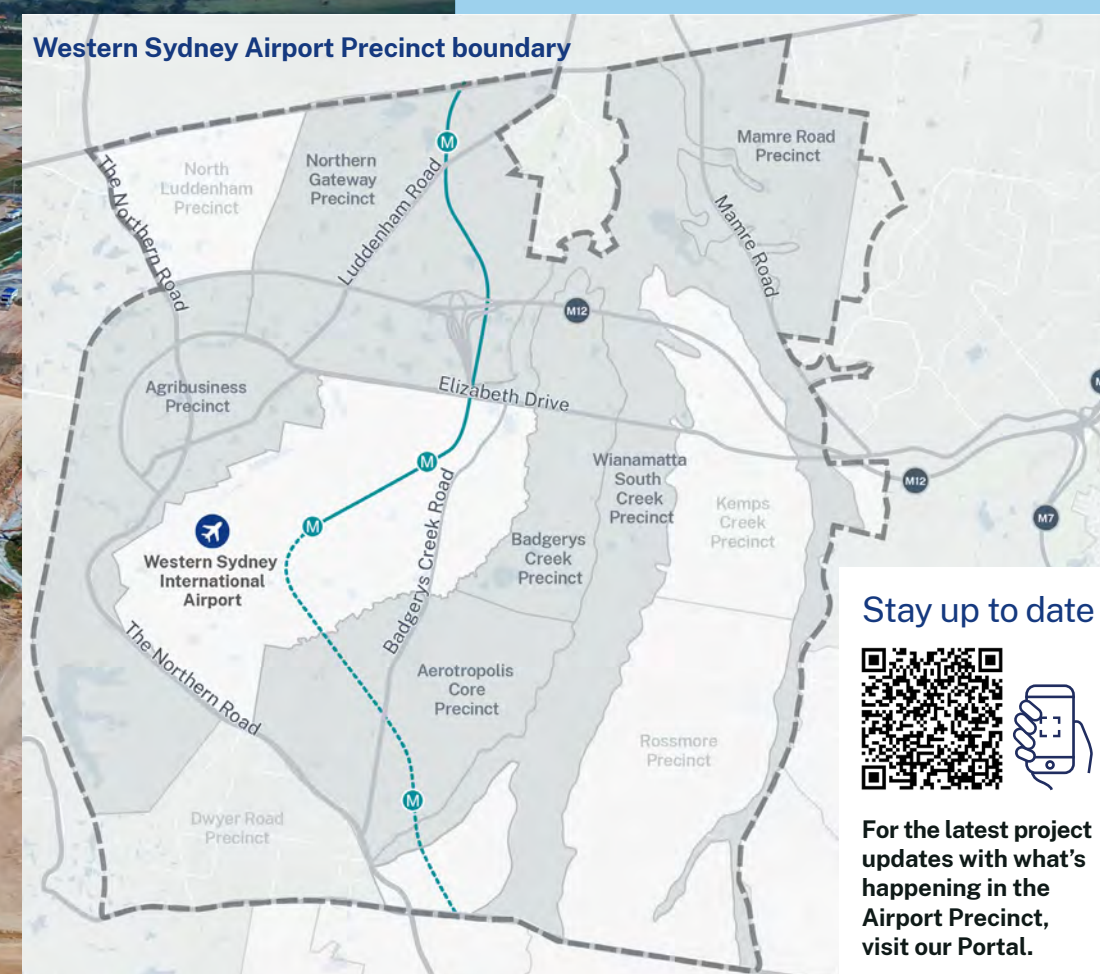
Progress is taking form with the completion of The Northern Road and Bringelly Road, and construction on the M12 and Sydney Metro – Western Sydney Airport is underway. We have an enormous task ahead of us to keep pace with development and to proactively address safety and accessibility to reliable transport. That is why we are working closely with our government partners, WSI Airport, developers and the community to stage our delivery so that we meet the evolving needs of the Airport Precinct in line with the funding we have available.

What is the Western Sydney Airport Precinct?

- *11,200-hectare area in the Western Parkland City at Badgerys Creek
- Centred around the Western Sydney International (WSI) Airport
- Home to Australia's newest city –Bradfield City Centre –the first major city to be built in more than 100 years
- Will support Western Sydney as Australia's third-largest and fastest growing economy
- Located within the Liverpool and Penrith local government areas
- Provision for 11,400 new homes in initial precincts
- More than 100,000 new jobs expected to be created by 2056.

*Figure includes Mamre Road Precinct.

City-shaping transport will help the Airport Precinct come to life and become a new economic centre for Western Sydney



Aerial view of Elizabeth Drive looking towards the WSI Airport site



Shipping container yard

Transport is enabling growth across Western Sydney

Freight and logistics

In the next 30 years, more than 80 per cent of imported shipping containers from Port Botany will have an origin or destination in the Western Parkland City. That's why we're improving road safety and access now and planning for freight corridors to service the Airport Precinct, including the Western Sydney Freight Line and Intermodal Terminal. This will help to address aspects like the rise in development, 24-hour freight operations, the need for efficient connections to economic and industrial hubs, and the ongoing demand for construction materials.

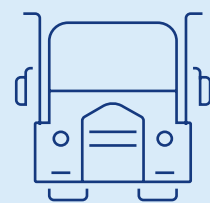
Education and employment

The Airport Precinct is forecast to create more than 100,000 new job opportunities across the Aerotropolis Core, Badgerys Creek, Northern Gateway and Agribusiness Precincts by 2056 – the biggest jobs boom in NSW's history. New businesses across aerospace and defence, manufacturing, healthcare, freight and logistics, agribusiness and education will equip the workforce with new skills and strengthen the economy. Reliable transport will link people from across Western Sydney to new jobs, education, and training – and for residents in the Airport Precinct, job opportunities will be closer to home.

There is a clear need for affordable housing and considered urban planning in Western Sydney



Aerial view of Campbelltown



41 million tonnes
of freight coming to or from
Western Sydney by 2041



100,000+
new jobs created
by 2056



Diverse streetscape in Liverpool

Housing

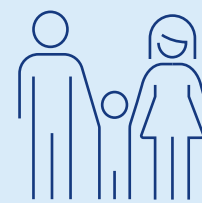
There is a clear need for affordable housing and considered urban planning in Western Sydney. An expected 1.4 million people will live in the Western Parkland City by 2036, alongside further growth in Campbelltown, Penrith, Camden and Liverpool. There's provision for the building of around 11,400 new homes in the five initial precincts of the Airport Precinct. Bradfield City Centre and the Science Park at Luddenham will also help to address housing needs, but it's public transport that will enable and facilitate residents moving to, and living in, the Airport Precinct.

Technology

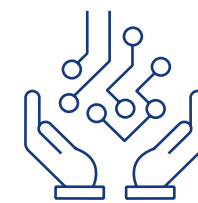
As Bradfield City Centre emerges as Australia's first 22nd Century City, we'll be integrating technology-enabled public transport options to match. Whatever shape technology takes in the future, we'll ensure real-time information, personalised trips and seamless travel experiences 24 hours a day are standard offerings.

Social and cultural diversity

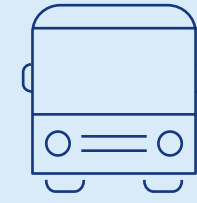
Western Sydney is one of the most multicultural places in Australia. Inclusive, accessible and better-connected public transport means more people, and groups from more areas and backgrounds across Western Sydney, can enjoy the benefits of the new WSI Airport, Bradfield City Centre and the Western Sydney Parklands.



11,400
new homes in
initial precincts



Technology-enabled
public transport options



New, inclusive and
accessible public
transport options

Creating Connections

Planning for enhanced north-south connectivity

The Airport Precinct is strategically located at the edge of Greater Sydney and lies at the heart of one of the most geographically expansive and multiculturally diverse regions in Australia, Western Sydney. The Precinct will be a future gateway to North West and South West Sydney, the Blue Mountains, central coast and Illawarra, Southern Highlands, Nepean River, inland to regional NSW and more.

Importantly, our planned and future transport links and public transport services in the Precinct will connect the growing north and south regions of Western Sydney with new homes, schools, hospitals and other supporting infrastructure and services progressively coming online.





Travel needs and community expectations are changing

As the Airport Precinct evolves from its rural beginnings, so too will the fabric and culture of the local community. Residents today are witnessing a significant transformation of the land around them and in their community, which will intensify as the Airport Precinct develops.

We're focused on managing safety and reliable access to the existing network, and supporting community members through this change. We're also actively working with our industry and government partners to consider and plan for the evolution of community expectations and needs as the region transforms into a 24-hour city over the next 30 years.

Supporting the safe movement of freight

Access to transport for everyone

The current reliance on private vehicle use in the region will begin to transition to public and active transport. As bus and metro services come online, and cycleways, walkways and new roads open, the network will be designed to serve everyone across all journeys. Easy access to additional travel options will also improve equity and foster social inclusion across Western Sydney.

Enhancing lives and livelihoods

Building a new transport network for an emerging global hub is a significant undertaking. It's not just about infrastructure and services – it's about shaping the lives and livelihoods of millions of people in the Airport Precinct. People will expect to travel in a way that suits them – whether on a bus from Liverpool to WSI Airport, or the metro from Orchard Hills to Bradfield City Centre. It's this ease of choice that will help reduce long commutes to work and allow more opportunities for people to visit the Western Sydney Parklands and other recreational spaces.

Freight movement and construction

Freight movements and the number of construction vehicles will intensify over the next 30 years. This will have a sustained impact on the local community and commuters travelling to and from WSI Airport, and economic and industrial hubs. An emphasis on safety, access and mitigating impacts for schools, businesses and residents will be critical while we deliver the transport needs for the Airport Precinct.



Shared cycleway path along The Northern Road

A resilient and sustainable network

It's important to get the balance right between the expectations and needs of the community and what we can fund and build. We are carefully planning and staging our work over the next 30 years so that the network is resilient and meets sustainable place outcomes, like walking and cycling routes and the greening and cooling of neighbourhoods by planting trees along road and transport corridors.




Leaf canopy artwork installations as part of recognising Country in the Western Sydney Airport Precinct

Easy access to additional travel options

Shaping the lives and livelihoods of millions of people

An emphasis on safety

Resilient network with new walking and cycling routes



The Western Sydney Airport Precinct and surrounding areas will have a safe, sustainable and integrated transport network

3

Our vision

An integrated public transport network underpins the success of the Airport Precinct

Transport is playing a critical role in shaping the future Airport Precinct by setting a new benchmark for what public and active transport can be, while bringing equitable change to the people of Western Sydney.

In years to come, the Airport Precinct and surrounding areas will have a safe, sustainable and integrated transport network that serves people and freight, providing more travel choices across modes, day and night.

Seamless connections between road, metro and bus services, and active transport links like walking and cycling paths, will bring WSI Airport and Bradfield City Centre to life. This will unlock social and economic opportunities for the two million people who will live in the surrounding areas of the Airport Precinct over the coming decades.

Our Strategic Vision will take time to achieve but we have a plan to get us there. We have a clear set of outcomes and focus areas to guide us over the next 30 years and we're taking a sustainable approach to what and when we build with the funding available so we can keep up with growing and changing demands.

Bike rider getting on a Sydney Metro train

What transport will look like in the Airport Precinct

Public transport

Day and night public transport services that are easy to navigate will be the backbone of the Airport Precinct. A new 23-kilometre metro service will be delivered from St Marys to the new WSI Airport terminal and Bradfield City Centre. This will be complemented by a local and rapid bus network servicing communities in Penrith, Liverpool, Campbelltown and surrounds to get direct access to and from the Airport Precinct. Metro links to improve connectivity to the north and south are being investigated.

Roads

New and improved roads in the Airport Precinct are being carefully considered. Roads are the foundation of our integrated transport network, from which buses, freight connections, walking and cycling paths, enhanced accessibility and increased productivity will grow.

Freight

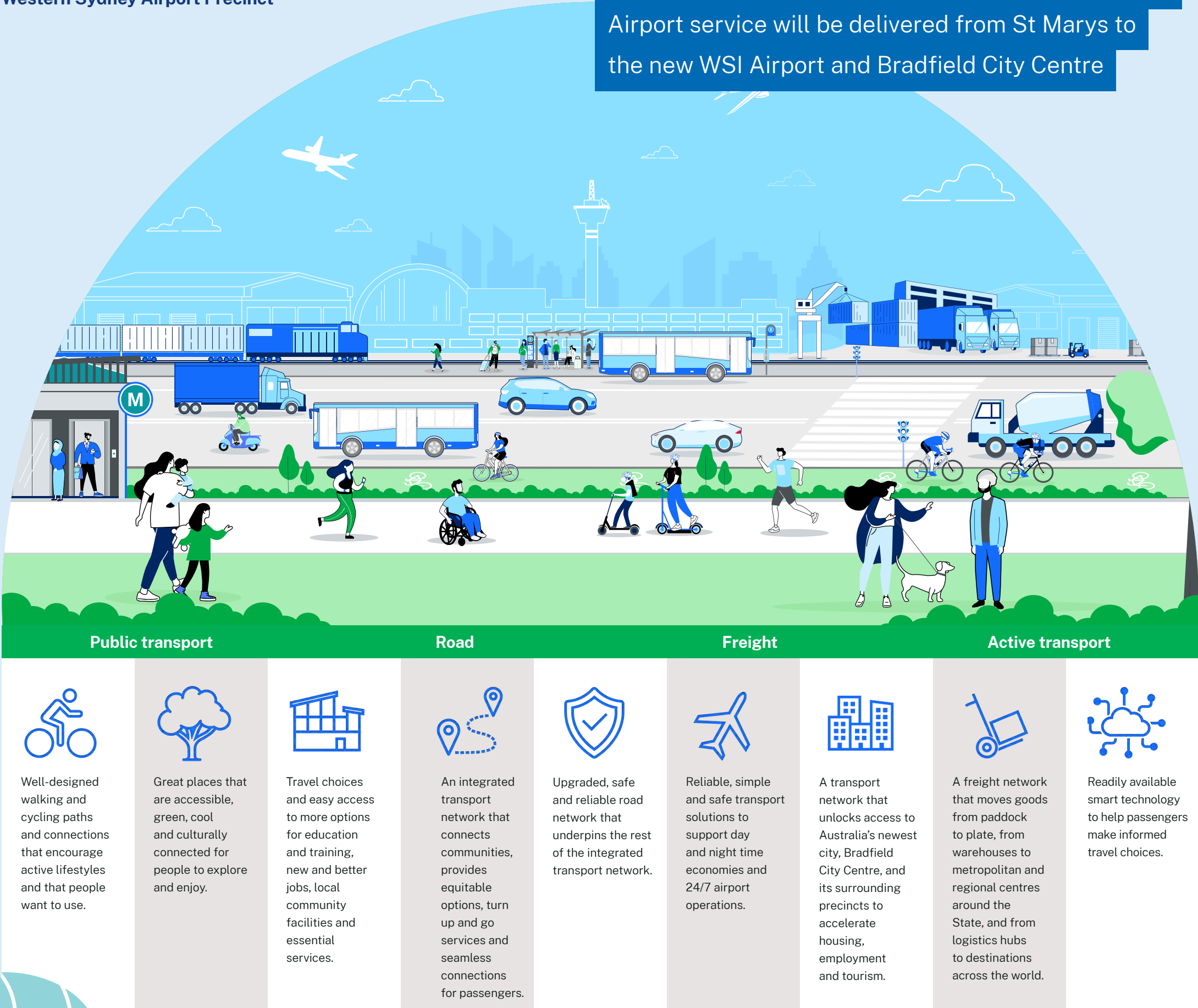
Freight networks will be instrumental to growth in the Airport Precinct, supporting the 24/7 economy and movement of goods across air, road and rail. The Airport Precinct freight network will provide important connections to Western Sydney, regional NSW, the rest of Australia and beyond. Underpinning this will be our ongoing focus on safety and access to manage the steep rise in construction and freight demand.

Active transport

Local walking and cycling routes will be a fundamental part of the integrated transport network. Active transport will offer inclusive options for people to connect to the broader network, like metro and buses, and unlock the potential of the Airport Precinct and surrounding Western Sydney Parklands as green, cool, and connected destinations. The active transport infrastructure we deliver will also cater for power-assisted micromobility options such as e-bikes and e-scooters, supporting future demands for active lifestyles.

Transport’s vision for the Western Sydney Airport Precinct

A new 23-kilometre Sydney Metro – Western Sydney Airport service will be delivered from St Marys to the new WSI Airport and Bradfield City Centre



Who we're delivering for

Everything we do is intended to create a positive impact for the people of NSW. Our role in creating a successful Airport Precinct is not only about new roads and bus routes, cycleways and metro services – it's about shaping the way people live, work, travel and get to new, enjoyable places.

Passengers and users of the transport network

Passengers are people who directly use public transport services including bus, train, metro and light rail. Other users of the transport network are pedestrians, drivers, cyclists and freight providers.

“ I prefer using public transport to using my car. I need to know what the closest and easiest transport option is and that it'll arrive on time. I need accurate information, so I get to work or the doctors safely, and I don't want to wait a long time between connections. ”

Communities

Communities are groups of residents and local businesses that may be impacted by development and construction in the area. They will also benefit from the social, environmental and economic outcomes of new transport options in the Airport Precinct.

“ I live in Penrith right now. New public transport will give me access to job opportunities in other areas, new places to explore, and exciting shops and restaurants to enjoy with family and friends. ”



Keeping our communities connected through reliable public transport



Creating great places

People of NSW

The people of NSW are the residents and taxpayers of the State. They have an interest in NSW Government decisions. They want investment in transport infrastructure and services to achieve the best outcomes for the community and all users across the transport network.

“ I want to feel confident that Transport has a plan to deliver the right transport services at the right time. I want the new airport and surrounding development to be a success for locals, Western Sydney, regional NSW and the State. ”

Visitors to NSW

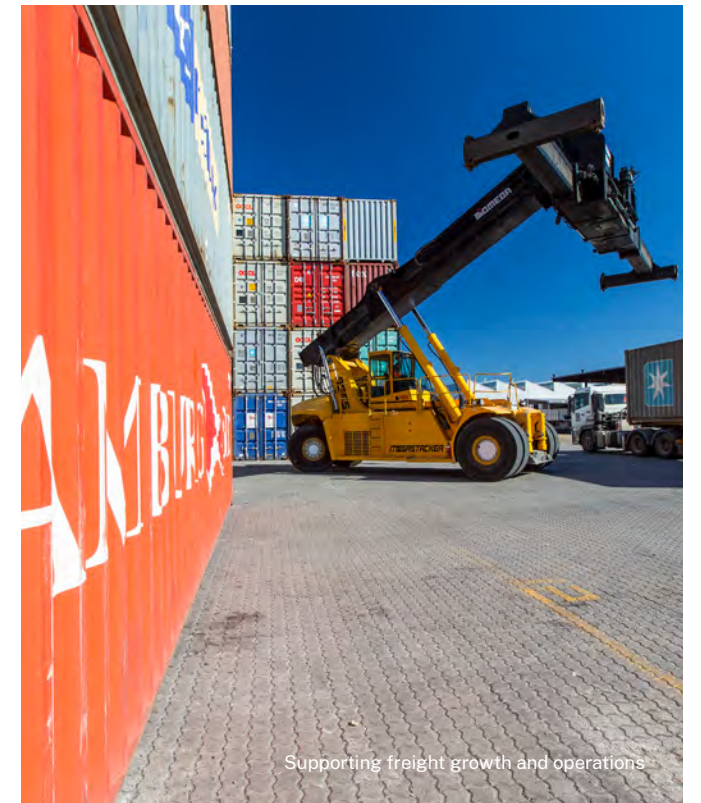
Visitors to the new WSI Airport will rely on easy transport options to get around and want a safe and seamless start to their trip once they touch down in Western Sydney.

“ As someone who will be visiting family in Western Sydney, I want to know that my relatives can easily pick me up and drop me off and that transport information is available in my first language. Whether I'm hiring a car, using the metro or a bus, I want easy and reliable travel. ”

Industry partners and business

Industry partners and businesses include developers, freight providers and logistics companies, and other stakeholders travelling and operating within the Airport Precinct.

“ As a developer in the Airport Precinct, I want safe access to my land and for my tenants to operate easily from the site. I want to feel certain that the airport and industrial districts within the Airport Precinct are well connected to the freight network and can move goods around efficiently. ”



Supporting freight growth and operations



Celebrating Country and creating enjoyable places along the M12 Motorway

What we're working towards

We've chosen three outcomes to show our passengers, users of the transport network, communities, taxpayers, visitors and industry what we're working towards in the Airport Precinct. The outcomes, framed by our Future Transport Strategy, are tailored to the unique needs and expectations of the Airport Precinct communities.

These outcomes will guide our planning and decision-making over the next 30 years to ensure we invest in the right transport services and infrastructure at the right time. They are a roadmap for partnering effectively with our stakeholders, including developers and members of the community.

Three primary outcomes



City shaping and precinct making

We're focused on creating and enabling great places. A great place fosters connections between family, friends and the community, has a strong identity, and is inclusive, accessible and sustainable. By providing easy transport options for people to connect with jobs, schools, essential services and the Western Sydney Parklands, we will help to make the Airport Precinct a great place.

We're planting trees along roads and at transport hubs, providing convenient walking and cycling tracks, creating space for social and cultural activities to form local identities, and celebrating Aboriginal culture through art and design.



Excellent services for communities

Excellent transport services prioritise the needs and comfort of people. Residents and visitors to the Airport Precinct will be able to make choices about how and when they travel. Ensuring reliable and safe journeys and providing easy connections between modes will grow confidence in, and use of, the network.

A 24-hour public transport timetable will support workers and visitors to get to and from WSI Airport at any time of the day or night, without always relying on private vehicles. This will help to alleviate traffic congestion and enable the efficient movement of freight within the Airport Precinct and to other local, strategic, and metropolitan centres.

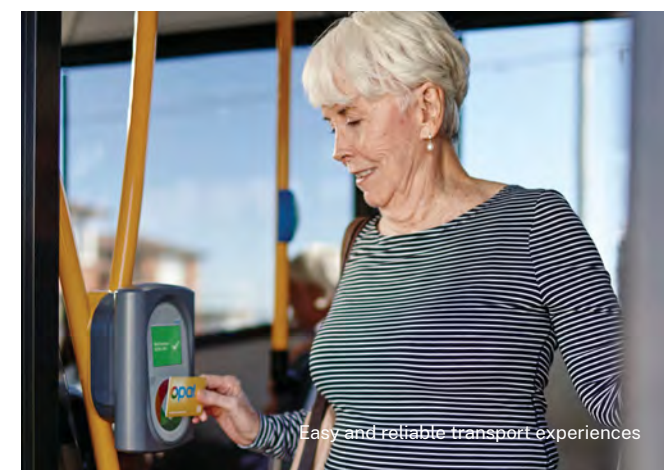


Support strong economic growth

An integrated transport network will help foster growth in the Airport Precinct and unlock its full economic potential.

Connecting WSI Airport, Bradfield City Centre and other key centres within Western Sydney will facilitate the growth and operation of freight and logistics, while attracting new businesses and investment to the Airport Precinct that will help boost the local economy. It will also enable the creation of new and better jobs for people who live in Western Sydney, bringing equal opportunities closer to home.

Making public transport the preferred way to travel in the Airport Precinct will lead to cleaner air, less noise pollution and a safer environment for pedestrians





4 Our eight strategic focus areas

Corner of Elizabeth Drive and Mamre Road roundabout

Our strategic focus areas require special attention in the Airport Precinct as they are key enablers that will help us achieve our three primary outcomes



Celebrating Country along the M12 Motorway

1 A deep Connection to Country in the Airport Precinct

Considering Country and the Traditional Owners of the lands that make up the Airport Precinct – the Darug, Dharawal and Gundungurra people – in all project development and design by adopting the key objectives and requirements set out in the Department of Planning and Environment's Western Sydney Aerotropolis Precinct Plan.

This means...

- Using the design principles that recognise Country and seek to respect and acknowledge the importance of the area to Aboriginal people
- Applying the principles of OCHRE (Opportunity, Choice, Healing, Responsibility and Empowerment) to create environmental, social, cultural and economic benefits for all members of the local community, while enabling Aboriginal people to maintain their spiritual links to Country
- Ensuring developments and projects in the Airport Precinct promote opportunities to connect, design with, and care for Country
- Maintaining meaningful engagement with Aboriginal communities with the aim to join with other Government agencies to optimise outcomes across the region.



Elizabeth Drive approaching Badgerys Creek

2 Plan for seamless travel experiences in the Airport Precinct

Outlining a clear strategy and approach to how we'll implement our long-term planning and prioritisation for the Airport Precinct over the next 30 years.

This means...

- Committing to a clear vision, purpose and priorities for Transport
- Developing detailed integrated transport planning to support access to employment opportunities and provide a safe network for the movement of construction vehicles and freight
- Incorporating technology solutions into transport planning to support a 24/7 working environment
- Coordinating requirements across projects and development to improve consistency and deliver priorities at the right time across the Airport Precinct.



Elizabeth Drive looking east

3 Reliable transport choices connecting communities and WSI Airport, and encouraging public transport use.

Being prepared to provide the right transport choices at the right time as the Airport Precinct evolves, while supporting the growing 24-hour economy.

This means...

- Developing detailed operational plans to manage the integration of services as they come online, such as the local bus network and Sydney Metro –Western Sydney Airport line to support WSI Airport operations, growing industrial hubs and Bradfield City Centre
- Providing reliable transport choices for people to access employment opportunities from day one of the WSI Airport opening, and enabling the safe movement of construction and freight as development and commerce intensifies.



Construction will continue to increase as the Airport Precinct evolves

4 Working in partnership to achieve our outcomes

Taking a coordinated approach across government and with our community and industry partners to work towards the same goals for the Airport Precinct and to unlock the Precinct's full potential.

This means...

- Prioritising engagement with the local community, industry and government partners to effectively shape our decision-making and planning
- Adopting a core set of engagement principles based on respect, collaboration, early engagement, listening and feedback to maintain genuine consultation and partnership with key groups
- Playing an active role in the local community by attending regular forums and meetings to address community concerns, answer questions and share information about what is happening
- Maintaining strong relationships and open lines of communication across government and industry to ensure alignment in priorities and identification of joint solutions.

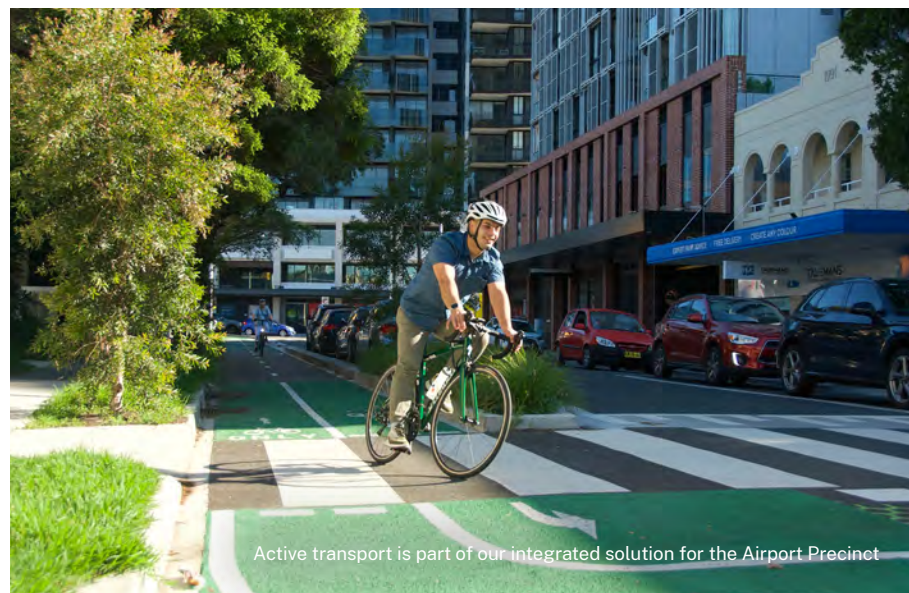


5 Managing the scale and pace of growth in the Airport Precinct

Safety and access to our roads and the expanding transport network are paramount to support the community alongside the rise in construction and freight as the Airport Precinct evolves over the next 30 years.

This means...

- Identifying improvements to the road network for communities –particularly around schools and local businesses –as well as supporting access and the safe movement of construction vehicles and machinery throughout the build
- Taking a precinct-wide approach to decision-making to ensure decisions are equitable and optimise benefits.



Active transport is part of our integrated solution for the Airport Precinct

6 Enabling a place-based approach to prioritisation

Taking a sustainable approach to what we build and when to keep pace with development, contribute to positive place outcomes and meet the changing travel needs of the Airport Precinct throughout the life of the program.

This means...

- Progressing priority work to support the WSI Airport, Bradfield City Centre and the wider Airport Precinct
- Taking a holistic, multimodal approach to integrated planning and prioritisation for the Airport Precinct
- Making future investment decisions based on the critical needs and expectations of the Airport Precinct and staging the work to effectively manage the growing network.



Designing the urban environment

7 Our responsibility to the local environment

The population in Western Sydney is projected to grow significantly over the coming decades. The liveability of the Airport Precinct and surrounding urban areas is paramount as it is intrinsically linked to economic growth.

This means...

- Boosting the liveability and sustainability of communities and the environment by ensuring we minimise the impact of transport projects on biodiversity, air and noise quality, and the natural water tables
- Designing the urban environment within the Airport Precinct to respond to climate extremes in Western Sydney and to mitigate and adapt to urban heat
- Including space for greening urban environments, including canopy cover and green, resilient landscapes to manage water flows, water quality and local climate conditions.



Aerial view of the M12 Motorway looking east towards Luddenham Road



Freight will play a major part in the development and ongoing success of the Airport Precinct

8 Enabling stronger freight connections

Enable the safe, productive and sustainable movement of goods to and from the Airport Precinct, Greater Sydney and the world as road, rail and air freight demands intensify over the next 30 years and beyond.

This means...

- Working in partnership at all levels of government and with industry to deliver improved freight outcomes for the Airport Precinct and the whole of NSW
- Current and future access for road, rail and air freight is a key priority in our decision-making to support the continued expansion of industrial, logistics and agribusiness sectors in the Airport Precinct
- Leading the development of integrated, multimodal freight strategies that complement and align with the wider transport network.

5

How we will deliver

Our approach to achieving our vision

Our three outcomes and eight focus areas point us in the right direction and inform our planning and decision-making over the next 30 years and beyond.

To navigate the scale, complexity and cost of the task in the Airport Precinct, we need to:

- 1 Lay the foundations of the future integrated transport network**
- 2 Stage our work to keep up with the scale and pace of growth**
- 3 Enable the provision of a resilient and sustainable public and active transport network.**

By focusing on these elements, we will create the pathway for investment and progressively build the transport necessary to connect people to jobs and the services they need, and unlock the economic potential of this new global, industrial and transport hub for Western Sydney.

We will progressively build the transport necessary to connect people to jobs and the services they need

Resilient landscapes

1 The foundation of an integrated transport network

Road infrastructure is the starting point from which a transport network will grow and productivity and employment benefits flow. This is no different in the Western Sydney Airport Precinct. We are carefully considering the design of roads in the Airport Precinct to enable new bus services, walking and cycling connections, and to help with the greening and cooling of Western Sydney through tree planting along key transport corridors.

Investment in road infrastructure is needed as a base to support the delivery of the wider integrated network and ensure people across Western Sydney are linked with this new employment basin in the coming decades.

2 The scale and pace of growth

Building transport infrastructure and services for a new city takes time. By unlocking development opportunities at the right time and location, we facilitate choice, movement and progression equitably for industry, businesses, residents and communities—but we need to ensure we prioritise our investment decisions and deliver transport infrastructure and services sustainably.

3 Delivering a resilient and sustainable transport network for the future

There'll be periods throughout the growth of the Airport Precinct where political, social or economic changes take place. To navigate these changes and ensure flexibility, we'll continue to work with our government partners to align investment priorities in the Airport Precinct. A coordinated approach will ensure we listen and act on feedback from the community, work closely with industry to unlock development and growth opportunities, and contribute to the success of this once-in-a-generation investment in WSI Airport, Bradfield City Centre and the wider Airport Precinct.

Our passionate people

Our team at Transport take enormous pride in the progress and innovation we're driving across the Western Sydney Airport Precinct project, and the legacy and impact this will have for generations to come.

Our people are focused on working together across Transport, and with our government, industry and community partners, to realise our long-term vision.

With a lot of our people living locally in Western Sydney, they're especially invested in getting it right for their communities and are passionate about using their skills and expertise to do so.



Construction on the M12 Motorway looking west



Working with our partners

Setting out on our journey

We're listening to the concerns of industry, developers and government and reviewing options to accelerate development and explore interim solutions where possible.



We're prioritising work to support WSI Airport operations and Bradfield City Centre while unlocking development and job opportunities as soon as possible for Western Sydney.



We're involved in the local community to mitigate impacts during construction and to work through solutions to concerns and issues raised.

Transport's role in the planning process

Transport is committed to ongoing engagement with developers in the Airport Precinct to ensure that developments deliver jobs, housing and growth as soon as possible. To achieve our shared vision for the Airport Precinct, delivery of transport infrastructure and services needs to be staged so that it both meets demand as development occurs, and builds the foundations for future expansion. This will require Transport and industry partners to engage often and share ideas about how transport infrastructure can be developed.

Some developments in the Airport Precinct may trigger a statutory referral to Transport if they impact the State transport network. We encourage proponents to contact Transport early in the planning process for their sites, so that we can understand access needs and provide advice. Contact Transport via: **Development.Sydney@transport.nsw.gov.au.**

Transport is also a participant in the technical assurance panel (TAP) process for the Airport Precinct, which is managed by the Department of Planning and Environment. This TAP brings together state agencies, councils and landowners to undertake strategic investigations for precincts. Transport provides advice to proponents when they become part of the TAP process through Transport's Western Sydney Aerotropolis Masterplan Requirements.

To learn more about Transport's strategic vision for an integrated transport network, and what we're doing in the Western Sydney Airport Precinct, please visit our website or contact the team via the channels below.

Contact us



WSA@transport.nsw.gov.au



Scan the QR code to visit the **Western Sydney Airport Precinct portal** or go to **nswroads.work/western-sydney-airport-precinct**



Aerial view of the M12 Motorway looking east towards the interchange

