

Planned out of hours work and three month lookahead

Newcastle Inner City Bypass – Rankin Park to Jesmond

December 2025



Transport for NSW acknowledges the Awabakal people of the Awabakal Nation as the Traditional Custodians of the lands on which we work and pays respect to Elders past and present.

The Australian and NSW governments are investing in the Rankin Park to Jesmond section of the Newcastle Inner City Bypass.

Work is continuing on the 3.4 kilometre section of the bypass.

What work are we doing?

Along the length of the project, we will be carrying out general road and bridge construction including:

- road and footpath construction, including concrete pouring of structural elements, placing asphalt, and finishing work
- continued drainage work, service investigations, and installation of new culverts and pipes
- utility relocations, including electrical work and permanent street lighting
- installation of structural signs
- potential short-term road closures and modifications to traffic control systems

Our work at the southern interchange also includes modification to footpaths and property access adjustments along Lookout Road. Directly affected residents will be contacted and advised of potential impacts ahead of work.

When and where we'll be working

Work will occur along the length of the bypass from the northern interchange at Jesmond, to the southern interchange at New Lambton Heights. Additional work will also occur in Jesmond Park and near John Hunter Hospital.

Day work will be carried out **Monday to Friday between 7am and 6pm** and **Saturday from 8am to 5pm**. Work may also be carried out at the southern interchange on **Sundays 8am to 5pm**.

No work will be carried out on public holidays.

Work will be carried out in or next to live traffic lanes or require isolation of services overnight, so out of hours is the safest way to conduct this work.

Night work will be carried out up to five nights per week, between 6pm and 7am.

We'll maintain a limited program of work throughout the festive season, with no work taking place on public holidays. Should you have any enquiries, please call our 24-hour Construction Response Line on 1800 818 433.

What will this mean for you?

During night work there may be traffic control on site, temporary lane closures, potential detours and machinery operating adjacent to or in the road lanes. If detours are required additional communications will be issued to the community.



Visit www.livetraffic.com or download the Live Traffic NSW app for up to date information. To receive updates direct to your phone, search for 'Jesmond' or 'New Lambton Heights' in your Live Traffic app, select the incident and click 'Follow'. Please take care, keep to the signposted speed limits and follow the direction of traffic controllers.

We work outside standard construction hours to:

- improve safety by minimising the interactions between road users, pedestrians and workers
- minimise delays and journey times for motorists and businesses.

Managing our impacts

There will be machinery and other plant and equipment working in different areas throughout the night work. The machinery and equipment generate light, vibration, and moderate levels of noise.

We will make every effort to minimise these impacts by:

- advising directly affected residents when noise is higher than moderate levels of the potential impact and what we are doing to minimise disruption during the work
- carrying out activities earlier in the night, where possible
- turning off machinery and vehicles when not in use
- using non-tonal reversing alarms
- positioning of machines and directing temporary lighting down and away from homes
- planning activities close to residents and scheduling noisy work within standard construction hours, where possible
- monitoring noise to manage any potential impacts and adjusting our work, where possible.

Planned out of hours work Monday 15 December to Wednesday 14 January 2025

Day work will be carried out **Monday to Friday between 7am and 6pm** and **Saturday from 8am to 5pm**. Night work will be carried out at:

- Jesmond: **Sunday to Thursday between 6pm and 7am**, as required, weather permitting
- New Lambton Heights: up to five nights per week, **between 6pm and 7am**, as required, weather permitting
- Wallsend to Rankin Park, along the mainline of the bypass: no more than two consecutive nights, up to three nights a week and a maximum of 10 nights a month, **between 6pm and 7am**, as required, weather permitting.

Work activities and equipment that will be used during planned out of hours is listed on page 4.

Planned work from December 2025 to February 2026

Day work will continue to be carried out **between 7am and 6pm from Monday to Friday**, and **Saturday between 8am and 5pm**. Night work will be carried out up to **five nights** per week between **6pm and 7am** as required, weather permitting.

Work activities and equipment that will be used during planned out of hours is listed on page 4.

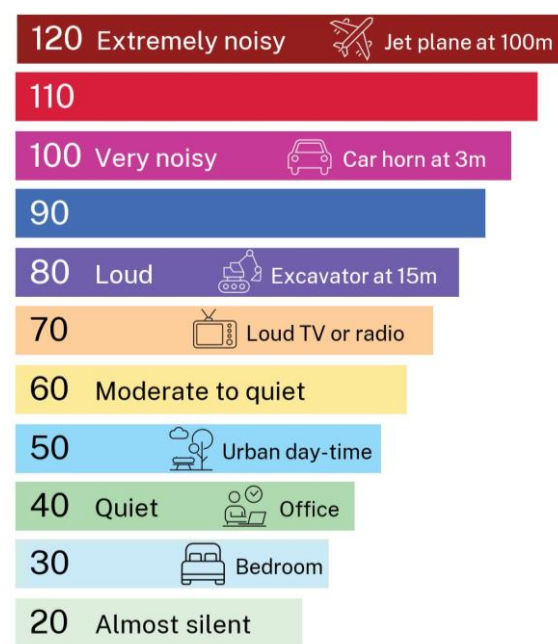
Keep up to date

For more information about the project visit nswroads.work/rp2j.

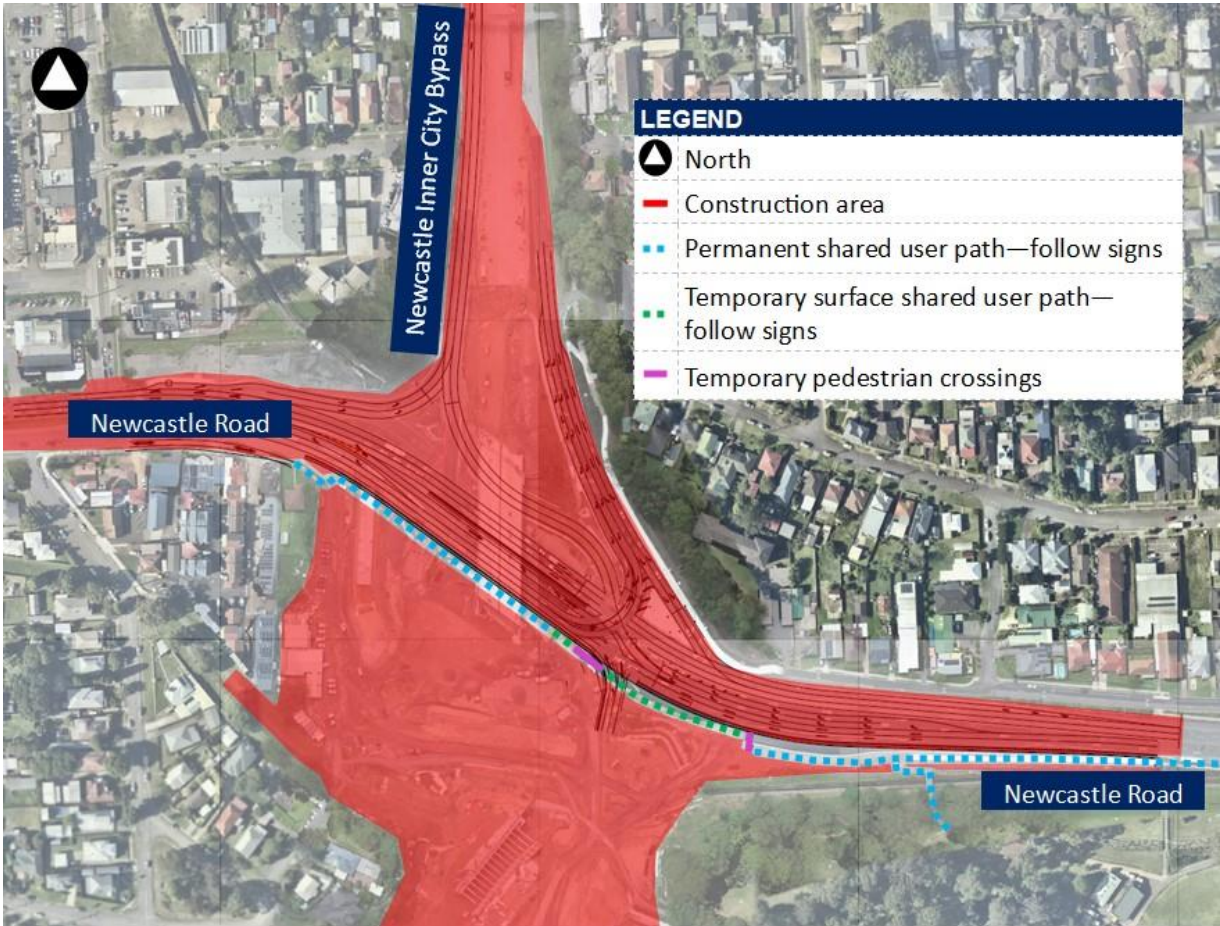
Scan the QR code on the following page to visit our interactive portal and learn more about the project as well as register for e-updates.

Thank you for your patience during this important work.

How we measure noise



Location of work areas

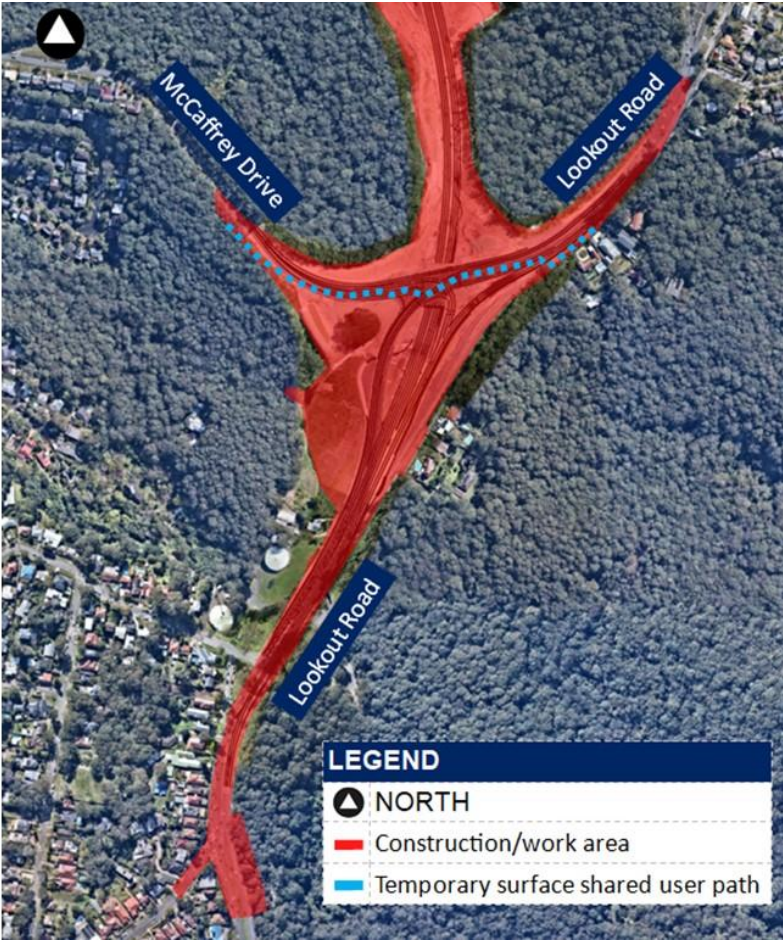


Jesmond - northern interchange

Maps are artist impressions only and not to scale



Wallsend to Rankin park - bypass mainline.



New Lambton Heights - southern interchange.

Work activities and equipment for planned out of hours work

Out of hours work activities	Equipment
<ul style="list-style-type: none"> • Backfilling of structures, earthworks, pavement, footpath, road furniture and signage construction. • Drainage work including removing existing and installing new stormwater pits, stormwater pipes and box culverts, connection to services at Jesmond and Rankin Park. • Fencing installation, modifications, installing site accesses, car parks, landscaping, vegetation removal and clearing activities, surveying work. • Implementation and relocation of site gates. • Installation of noise wall posts, acrylics, artwork and patching on bridge structures. • Temporary lane closures, detours and road closures, traffic control set up and pack down. • Removal and installation of pavements, kerbs, footpaths, medians, retaining walls, road signage, street furniture, lighting, line marking, and asphaltting. • Service investigations and relocations. • Installation of structural signage and permanent street lighting. • Traffic management for activities including asset maintenance and road cleaning. • Trucks moving equipment between locations including deliveries of plant and materials. • Utility work, service investigations, removal and installation of power, street lighting, water, communication lines and traffic control signals. 	<ul style="list-style-type: none"> • Asphalt, kerb, and paving machinery • Compaction equipment and concrete vibrators, lighting towers and pumps, generators, carpentry tools • Concrete road saws, ring saws and road profilers • Cranes and oversized vehicles • Earthworks plant, excavators, hammers, tippers, rollers, compactors, graders, dozers, dump trucks • Jackhammer, hammer drill, concrete saw, auger machines, hydro-blasters • Piling machinery • Seal and aggregate trucks and rollers • Trucks for line marking and removal, barrier install and removal • Vacuum truck for non-destructive digging.

Contact us



24-hour Construction Response Line
1800 818 433



RP2JCommunity@fultonhogan.com.au



<https://nswroads.work/rp2j>



PO Box 186, Waratah NSW 2298



Scan the QR code to visit the online portal



Interpreter service

For languages other than English call **131 450**
Arabic • Greek • Hindi • Mandarin • Vietnamese

لطلب خدمة الترجمة الشفهية للغات غير الإنجليزية اتصل
بالرقم **131 450**

Για υπηρεσίες διερμηνείας σε άλλες γλώσσες εκτός από
τα Αγγλικά καλέστε το **131 450**

अंग्रेज़ी के अतिरिक्त अन्य भाषाओं के लिए दुभाषिया सेवा
131 450 पर कॉल करें

获取英语以外的其他语言口译协助服务可以致电**131 450**

Để có dịch vụ thông ngôn cho các ngôn ngữ khác tiếng
Anh, gọi số **131 450**

www.transport.nsw.gov.au/privacy-statement#Your_Privacy



For the latest traffic updates:

Call 132 701, visit livetraffic.com or
download the app Live Traffic NSW