

# M7-M12 Integration Project

## Community update

December 2023

The M7-M12 Integration Project will support future development growth in Western Sydney by improving travel times and congestion. Once complete, the project will provide direct access to commercial and residential hubs, and the new Western Sydney International Airport.

### Construction starts

Work has begun on the M7-M12 Integration Project in Cecil Park and along the M7 Motorway.

Safety barriers are being progressively installed along the M7 Motorway between the M5 Motorway, Prestons and Richmond Road, Oakhurst/Glendenning to protect our workers and motorists. Installation of all safety barriers will be completed by early 2024. For the safety of workers and motorists, the speed limit along this section of the M7 Motorway has been reduced from 100km/h to 80km/h as barriers are installed.

At the Elizabeth Drive Connection (EDC) and the M7-M12 Interchange, work is progressing to install and relocate utilities such as water, gas, electrical and communications. Earthworks have started and retaining walls are being built along the realigned Wallgrove Road and Elizabeth Drive.

### End of year shutdown

The M7-M12 Integration Project will be closed for the holiday period.

All sites will be closed from 5pm, Thursday 21 December 2023 to 7am, Monday 8 January 2024.

### Finding new homes for local wildlife

During early construction activities in Cecil Park, the project team came across a number of wild animals living within the project construction area.

Turtles and eels were found in a nearby dam, possums were found in different shrubs and trees, and a family of ducks were found walking through the construction area.

The animals were safely captured and relocated to their natural habitat away from any construction activities.



A turtle being safely relocated downstream into Ropes Creek

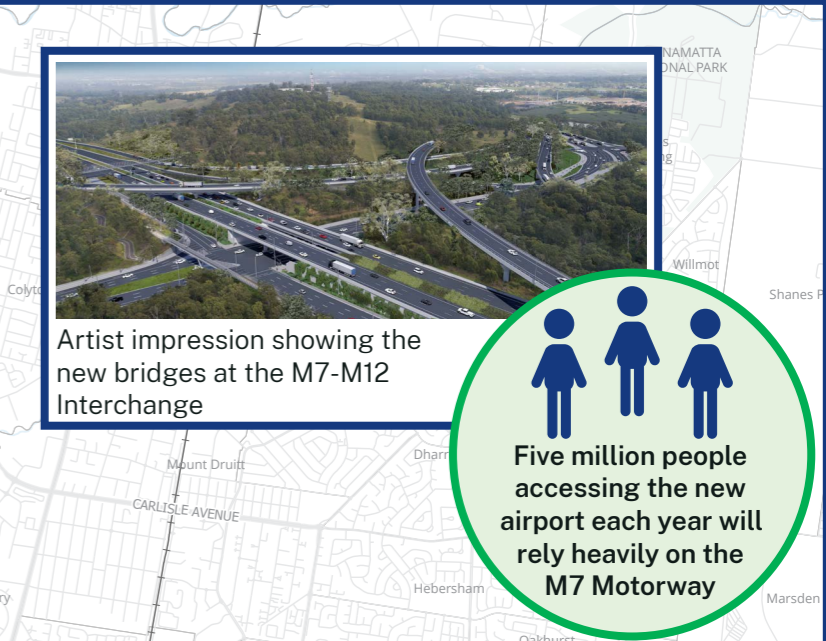
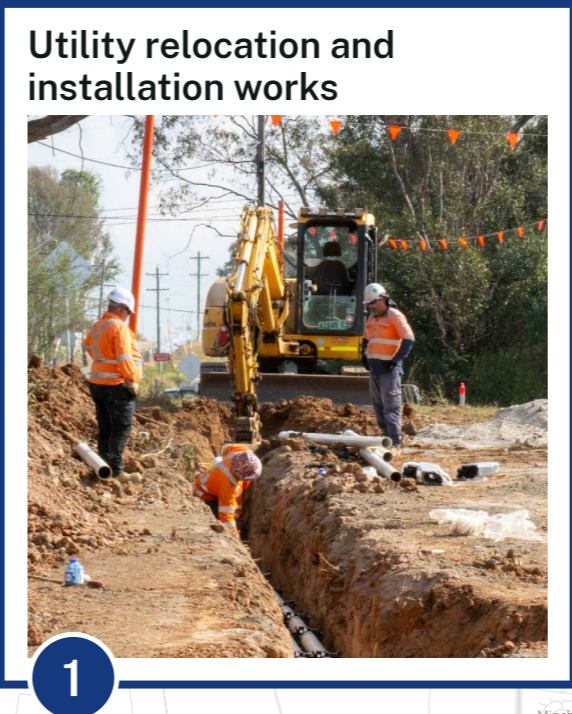
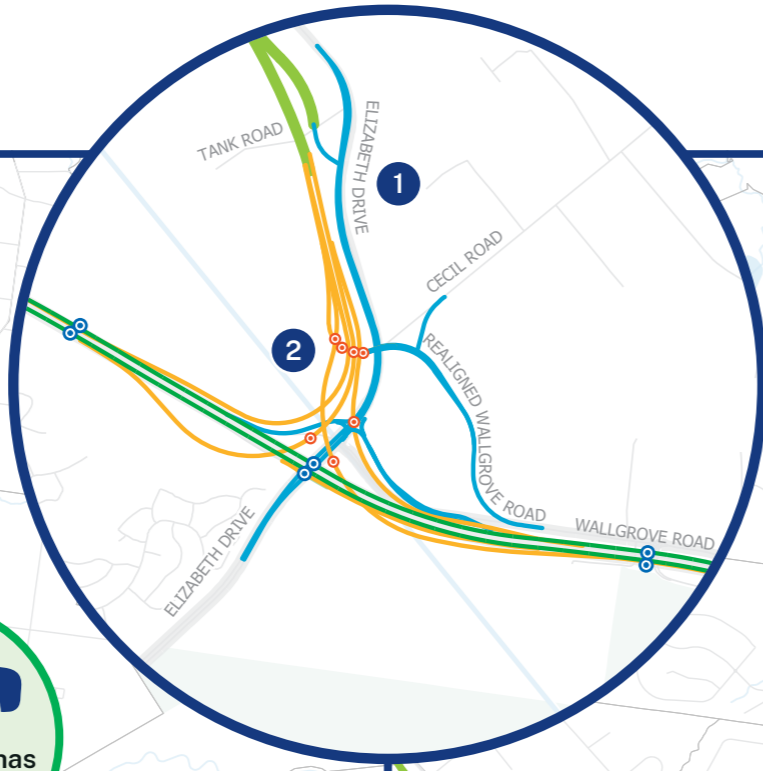


Ducks were found walking within the construction area and were relocated to Western Sydney Parklands



# Project highlights

- M7-M12 Integration Project**
- M7 widening
  - No M7 widening activities
  - M7-M12 Interchange
  - Elizabeth Drive Connection (EDC)
  - M12 Motorway Central
  - Bridges to be widened
  - New bridges



Five million people accessing the new airport each year will rely heavily on the M7 Motorway

By 2042, Sydney's population is forecast to increase by another 25%

M7 Motorway has 195,000 average trips per day

Direct access to Western Sydney International Airport



## Earthworks



Earthworks on the southern side of Elizabeth Drive between Tank Road and Cecil Road

63 boreholes completed as part of the geotechnical investigations along the project area

Widening bridges along the M7 at 23 locations

## Safety barriers along Elizabeth Drive and the M7 Motorway





## Drilling down under

We are carrying out a number of utility relocation activities on Elizabeth Drive between east of Cecil Road and the M7 Motorway using a Horizontal Directional Drilling (HDD) technique.

The HDD starts at a depth of two metres from the ground surface and will go to 24 metres deep beneath the M7 Motorway as it heads toward Cecil Road, covering a distance of 700 meters. With this approach we are:

- minimising traffic disruptions by placing equipment away from busy/high-traffic areas
- enhancing the safety of workers and the public by avoiding open pits, preventing falls and hazards
- keeping it eco-friendly by avoiding digging trenches to minimise ground disturbance and vegetation removal.



HDD machine on Elizabeth Drive to relocate underground gas.

## Three month look ahead

Please see below an overview of work which is planned to occur over the next three months, subject to environmental approval.

If you have an enquiry, complaint or would like to provide feedback on the work, please contact the M7-M12 Integration Project team on the details provided below.

Activities	Dec-23	Jan-24	Feb-24
Vegetation and tree removal	M7 EDC/M12	M7 EDC/M12	M7 EDC/M12
Utility and geotechnical investigation	M7 EDC/M12	M7 EDC/M12	M7
Installing safety barriers and signs	M7 EDC/M12	M7 EDC/M12	M7 EDC/M12
Shared user path changes	M7 EDC/M12	M7 EDC/M12	M7 EDC/M12
Earthworks	M7 EDC/M12	M7 EDC/M12	EDC/M12
Property adjustments	EDC/M12	EDC/M12	EDC/M12
Utility installation and relocation	EDC/M12	EDC/M12	EDC/M12
Bridge structure work including foundation excavation, piling, and concreting	M7 EDC/M12	M7 EDC/M12	M7 EDC/M12
Retaining wall construction	EDC/M12	EDC/M12	EDC/M12
Road works including resurfacing and temporary pavement construction	M7 EDC/M12	M7 EDC/M12	M7 EDC/M12
Upgrading existing traffic lights including control systems	M7 EDC/M12	M7 EDC/M12	M7 EDC/M12
Establishing work areas	M7 EDC/M12	M7 EDC/M12	M7 EDC/M12
Use of site compounds for deliveries and stockpiling	M7 EDC/M12	M7 EDC/M12	M7 EDC/M12

**EDC/M12** - Elizabeth Drive Connection and M7-M12 Interchange; **M7** - M7 Motorway between the M5 Motorway and Richmond Road.

## Contact us

 24/7 Project Infoline **1800 712 712**

 [info@M7M12integrationproject.com.au](mailto:info@M7M12integrationproject.com.au)

 [www.M7M12integrationproject.com.au](http://www.M7M12integrationproject.com.au)

[www.transport.nsw.gov.au/privacy-statement#Your\\_Privacy](http://www.transport.nsw.gov.au/privacy-statement#Your_Privacy)

 **Interpreter service**

For languages other than English call 131 450



Transport for NSW acknowledges the Traditional Custodians of the lands and pays respect to Elders past and present.