

Construction notification

September 2023

Out of hour works – Phillip Street

Construction activity is well underway at the Powerhouse Parramatta project site. Work is progressing and activity is required on Phillip Street, at the intersection of Wilde Avenue, to enable water services into the site.

Key dates

From Sunday 17
September 2023 for
approximately 2 weeks.

Location

Phillip Street, Parramatta

Timing

From the **new date of Sunday 17 September 2023 for approximately 2 weeks**, work will take place in Phillip Street to construct a new water main to provide water services to the new Powerhouse Parramatta.

Due to the work required in the road, these works will be completed outside of standard construction hours, between **9pm and 5am**.

Activity each night will involve road saw cutting, excavating a trench across the road and installing and connecting new water mains and services.

The road will be reinstated at the end of the work and water supply to surrounding properties will not be affected.

Traffic management

Pedestrian footpaths will remain unaffected.

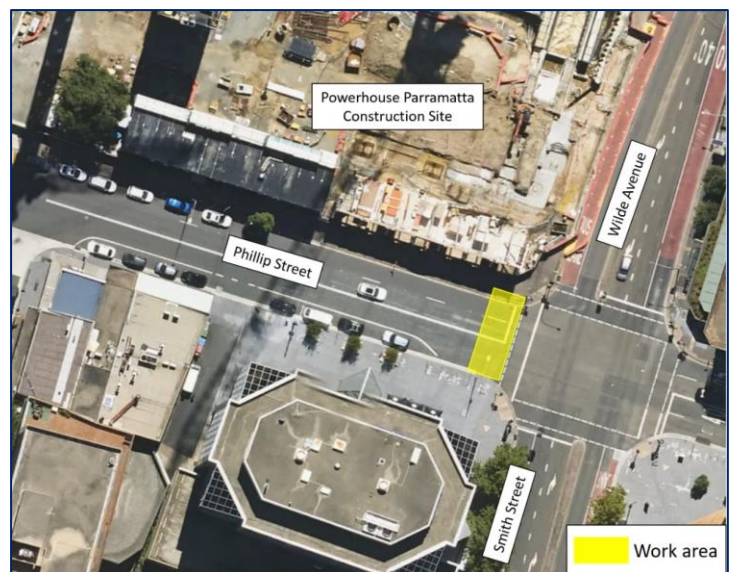
Traffic control will be in place to manage vehicle traffic, with work on the road appropriately staged to ensure vehicle access remains available throughout each night shift.

At the end of each shift, road plates will be installed to allow for unimpeded traffic to resume in the day.

Health and safety

All effort will be made to minimise noisy activities in Phillip Street, with a focus on completing noisier activities as early in each shift as possible.

Strict environmental and planning controls are in place to manage noise, dust and vibration.



Construction hours

These out of hours work will take place between **9pm and 5am for approximately 2 weeks**, subject to weather conditions.



All other construction activities will be carried out during the approved construction hours:

- Monday to Friday, 7am to 6pm
- Saturday, 8am to 1pm.

More information

We are committed to keeping you informed and regular updates will be provided.

Contact us for construction related questions, feedback or complaints:

 1800 574 931  powerhouse@lendlease.com  insw.com/powerhouseparramatta

If you need an interpreter, please call TIS National on 131 450 and ask them to call Infrastructure NSW on 1800 931 109. Our business hours are 8am – 5pm.