



# Upcoming weekend work and temporary traffic changes, North Sydney & Neutral Bay

## Warringah Freeway Upgrade

March 2025



Transport for NSW acknowledges the Cammeraygal people of the Eora nation as the Traditional Custodians of the lands on which we work and pays respect to Elders past and present.

We are simplifying the Warringah Freeway, making it safer and easier to use, and more efficient and reliable for the benefit of all road users, including public transport users.

In April 2025, we will be continuing consecutive weekend day and night work along the freeway and intersections in North Sydney and Neutral Bay, to speed up the work programme and reduce our overall impact to the surrounding community.

Please refer to **map 1 and table 1 on page 2** for more information about the work areas and work activities taking place in April 2025.

### Scan and plan



Scan the QR code to view our dedicated weekend work page and stay up to date with the latest information about our weekend work and temporary traffic changes. We will update this page regularly as we progress with any changes to the work, traffic arrangements and road closures.

Throughout the above weekends, multiple ramp and lane closures will be in place in North Sydney and Neutral Bay. Motorists are advised to expect delays, plan ahead and allow additional travel time.

### Fast facts: Community benefits of working consecutive weekends



Improving construction productivity and ultimately shortening the time our project impacts the community.



Reducing the amount of overall noisy night shifts required by the project.



Reducing traffic impacts during peak periods by completing work when the traffic volumes are lower.



#### Where

Mount Street eastern ramp, North Sydney, Warringah Freeway northbound and southbound lanes between Pitt Street, Kirribilli and Falcon Street, North Sydney, and Pacific Highway, North Sydney



#### When

10pm Friday 4 April to 4.30am Monday 7 April 2025

10pm Saturday 26 April to 4:30am Monday 28 April 2025 (Gantry work only)



High noise impacts and potential vibrations are expected during the upcoming weekend work. The exact impacts will depend on the proximity of your property to the work area. High noise work includes saw-cutting, rock-breaking, hammering, piling, demolition and hydrodemolition, road pavement work.



## What work are we doing?






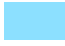
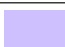
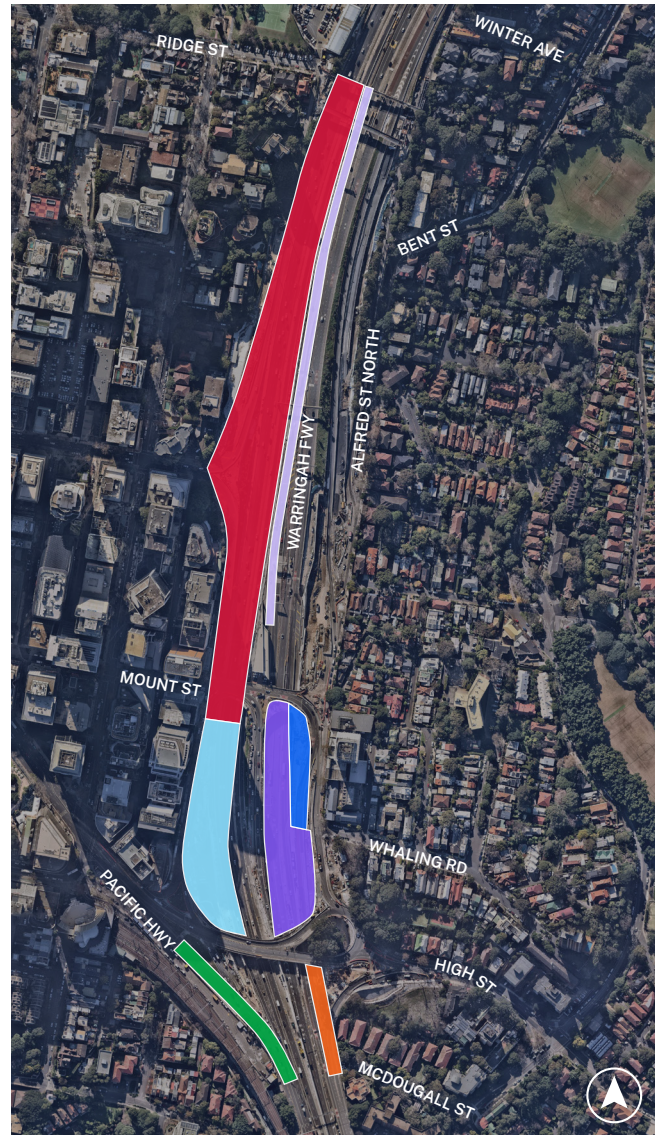

Area	Work location	Work activities
	Mount Street eastern ramp	Excavation and demolition of retaining walls
	Warringah Freeway northbound lanes, between Mount Street and Ridge Street	Pavement, concrete, asphalt and conduit installation, existing linemarking removal, new linemarking installation, signage installation, excavating, hammering, sawcutting, earthworks, backfilling and road restoration work and realignment of steel and concrete barriers
	Warringah Freeway southbound lanes, between High Street and Mount Street	Pavement, concrete, asphalt, drainage, streetlight and linemarking installation, excavating, hammering, sawcutting, earthworks, conduit investigation, backfilling and road restoration work
	Warringah Freeway southbound lanes, between High Street and Lavender Street	Pavement installation, concrete installation, asphalt installation, linemarking installation, excavating, hammering, sawcutting, earthworks, backfilling and road restoration work
	Pacific Highway	Intelligent Transport Systems (ITS) installation, sawcutting, hammering, excavating, trenching, backfilling and road restoration work, concrete installation, asphalt installation, linemarking installation, and road plate installation
	Warringah Freeway northbound lanes, between High Street and Mount Street	Pavement installation, concrete installation, asphalt installation, linemarking installation, excavating, hammering, sawcutting, earthworks, backfilling and road restoration work
	Warringah Freeway reversible lane	Pavement installation, sawcutting, hammering, excavating, concrete installation, backfilling and road restoration work

Table 1: Night work activities at 10pm Friday 4 April to 4.30am Monday 7 April 2025.



Map 1: Night work activities from 10pm Friday 4 April to 4.30am Monday 7 April 2025.



 **Work location:** Warringah Freeway northbound and southbound lanes, between Burton Street and Pitt Street  
**Work activities:** Gantry strengthening and modification work, painting and welding work.

Map 2 and table 2: Night work areas and activities from 10pm Friday 4 April to 4:30am Monday 7 April and 10pm Saturday 26 April to 4:30am Monday 28 April 2025.

## Temporary traffic changes



## Temporary traffic changes



Please note, these traffic arrangements will change depending on the weekend of work. We will update the traffic changes once confirmed. **Scan the QR code** to stay up to date with latest information or visit **LiveTraffic.com**.

## Managing our impacts and extended weekend work

Some of the work activities will require the use of machinery that generates noise, light, and vibration. We implement extensive controls to ensure any noise impacts are mitigated as much as possible.

To minimise the impact of this work we will:

- turn off machinery when not in use
- use acoustic blankets to minimise noise, where practicable
- direct temporary lighting down and away from properties
- fit equipment with devices to minimise noise, particularly non-tonal reversing beepers.

Our standard Environmental Protection Licence (EPL) conditions permit us to work up to three nights per week and up to ten nights per month, with no more than two consecutive nights of high noise work. We have been granted a temporarily altered EPL in instances where extended work shifts can provide benefits to the community, such as substantially reducing the duration of time it takes to complete a work activity, or when the work cannot be completed during single night work shifts.

The temporarily altered EPL condition allows us to work on consecutive noisy nights during extended weekend shifts usually from 10pm Friday until 4.30am Monday. The altered condition will continue to allow work on no more than ten nights per month in each work location.

During the extended work, we will make productive use of the lower traffic volumes to set up road closures and complete as much work as we can over the weekend, expediting the overall project work schedule.

If you have any comments you would like to provide on the planned work activities, or if you have personal circumstances you need to discuss with us, we would like to hear from you. You can contact us at **1800 931 189** or by emailing **whtbl@transport.nsw.gov.au**.

## Contact us



Project Infoline **1800 931 189**



**whtbl@transport.nsw.gov.au**

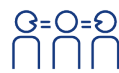


Visit the WFU online portal at **nswroads.work/wfuportal**



**For the latest traffic updates:**

Call 132 701, visit [livetraffic.com](http://livetraffic.com) or download the app Live Traffic NSW



**Interpreter service**

For languages other than English call **131 450**  
Mandarin • Cantonese • Japanese • Korean  
获取英语以外的其他语言口译协助服务可以致电**131 450**  
獲取英語以外的其他語言傳譯協助服務可以致電**131 450**  
英語以外の言語の通訳サービスは**131 450**までお電話ください。  
영어 외 기타 언어 통역 서비스는 **131 450**번으로 전화하세요

[www.transport.nsw.gov.au/privacy-statement#Your\\_Privacy](http://www.transport.nsw.gov.au/privacy-statement#Your_Privacy)