

Construction notification

December 2024

Footpath closure on Wilde Avenue

Construction activity is ongoing at the Powerhouse Parramatta project site and work is progressing well. A further footpath closure is required to allow activity to safely proceed on the eastern side of the site, adjacent to Wilde Avenue in Parramatta.

Key dates

From Monday 6 January to the end of March 2025

Location

Wilde Avenue, Parramatta

Western footpath closure on Wilde Avenue

From **Monday 6th January 2025**, a section of the western footpath on Wilde Avenue will be closed once again to allow works to take place on the eastern side of the site. This closure will be in place until the end of March 2025.

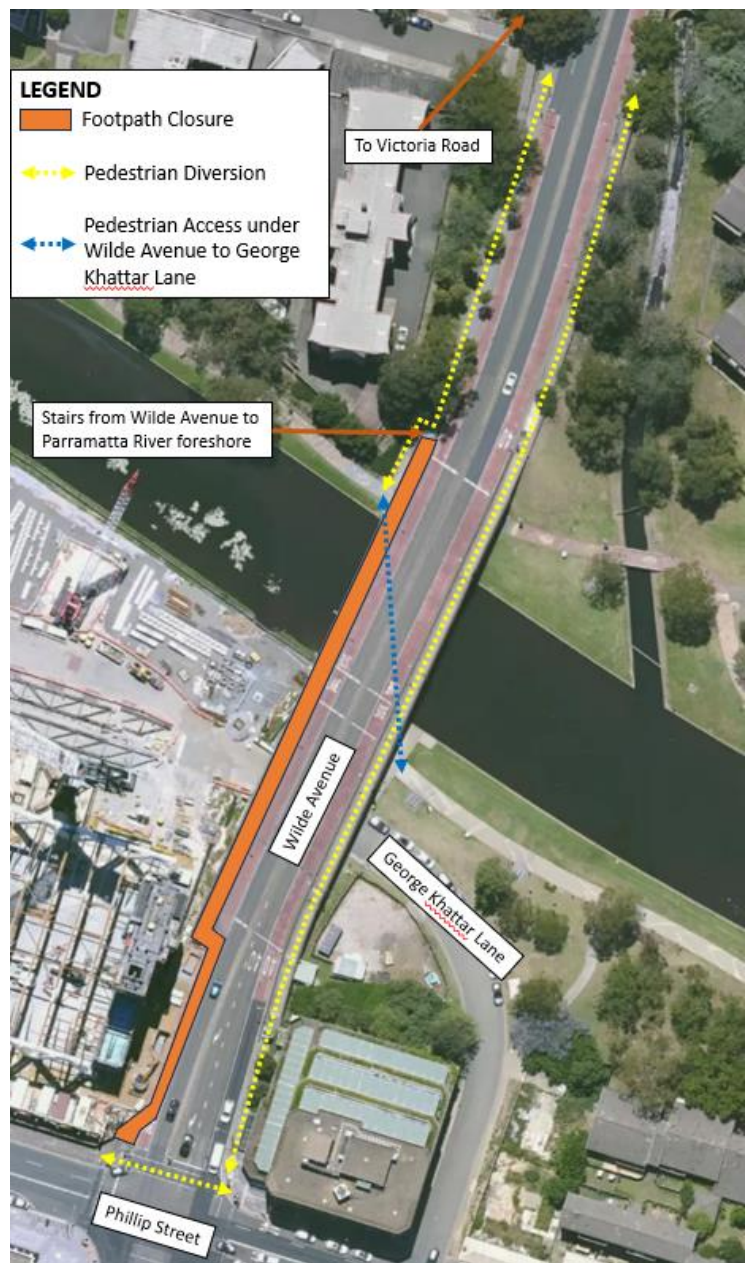
The closure will affect the section of the bridge between Phillip Street and the stairs leading down to the Parramatta River foreshore. The stairs will remain open throughout this footpath closure, as will the bridge to cross Parramatta River underneath Wilde Avenue. For accessible routes, pedestrians are encouraged to divert to the eastern side of Wilde Avenue at Victoria Road.

Pedestrian diversion signage will be in place along the western footpath of Wilde Avenue, diverting pedestrians to other routes.

Traffic and pedestrian management

Pedestrian diversion signage will be in place at key locations including at the intersection of Victoria Road and Wilde Avenue, at the stairs adjacent to Wilde Avenue leading to the Parramatta River foreshore and on Phillip Street.

Vehicle access on Wilde Avenue will not be affected during this work.



Traffic control will be in place to manage the establishment of the footpath closure.

Construction hours

All construction activities will be carried out during the approved construction hours:

- Monday to Friday, 7am to 6pm
- Saturday, 8am to 5pm.

More information

We are committed to keeping you informed and regular updates will be provided.

Contact us for construction related questions, feedback or complaints:

 1800 574 931  powerhouse@lendlease.com  insw.com/powerhouseparramatta

Scan the QR code to receive the latest project updates



If you need an interpreter, please call TIS National on 131 450 and ask them to call Infrastructure NSW on 1800 931 109. Our business hours are 8am – 5pm.