

Landholder engagement

Since early 2020, we have engaged with landholders across the project area. In November 2021, the proposed route was identified. Following valuable feedback from landholders, stakeholders, and communities, an updated proposed route was released in August 2022.

Landholder and community input has been carefully considered and provided to the technical specialists conducting the impact assessments for the Environmental Effects Statement (EES), which is now on public exhibition.

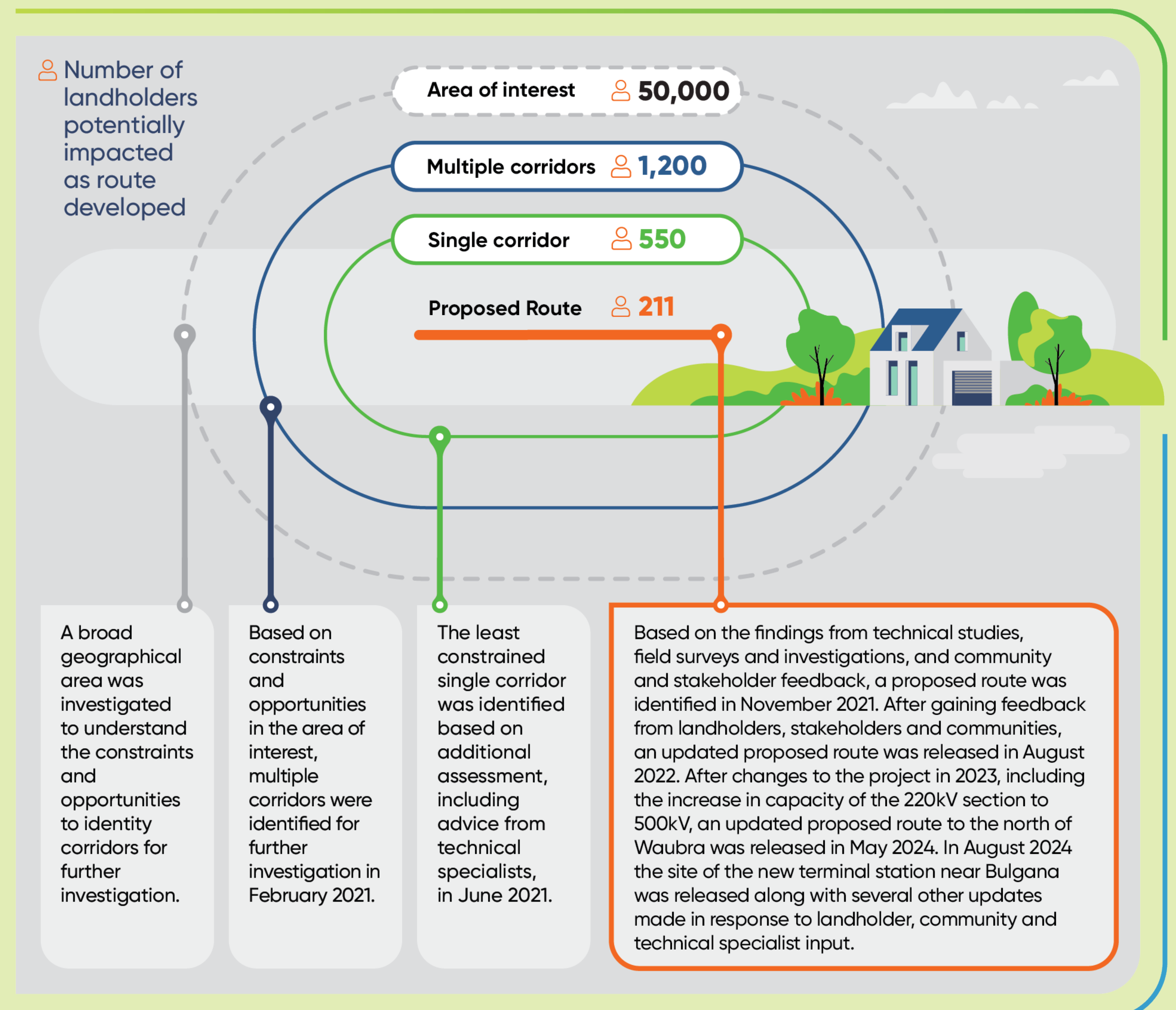
We remain committed to working closely with all landholders, neighbours, community members, and other stakeholders throughout the exhibition period and into subsequent phases of the project.



Any questions?

If you are a landholder with a property within the proposed route, your dedicated Land Liaison Officer will be your main point of contact for all matters relating to the project, the proposed route and your property. Contact details for your Land Liaison Officer can be provided by the project team.

If you have a property close to the proposed route and have any concerns, please contact our **Community Engagement team**.








Click here to view or download the [Landholder Guide: Land access, easements and compensation](#).

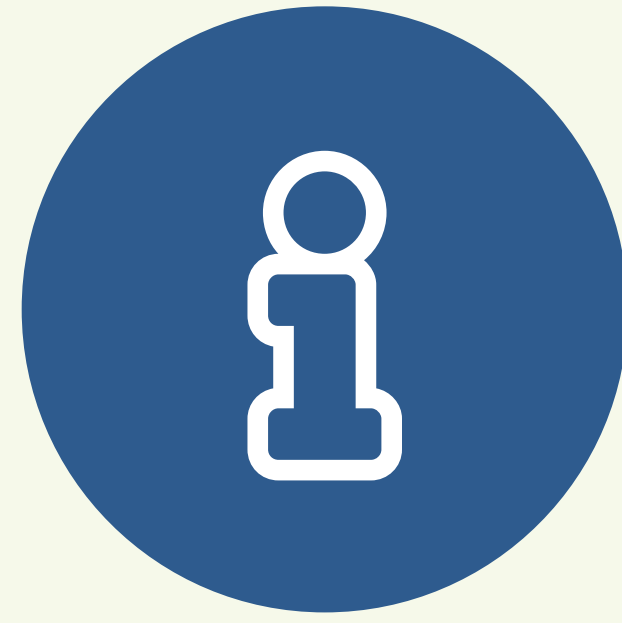
Community support services



AusNet Services acknowledges the uncertainty and concern around the Western Renewables Link, particularly for potentially affected landowners and communities.

We encourage anyone struggling with challenges to their own, a friend or a family member’s mental health and wellbeing, to contact one of the independent support providers listed below for free and confidential advice.

Support Service	Website		Telephone
 TELUS Health	TELUS Health	telushealth.com	1300 360 364
 RFCS Victoria West	RFCS Victoria West	wswrccs.com.au	1300 735 578
 HEAD TO HEALTH	Head to Health	bchc.org.au/service/head-to-health	1800 595 212
 Beyond Blue	Beyond Blue	beyondblue.org.au	1300 22 4636
 Lifeline	LifeLine	lifeline.org.au	13 11 14



Contact us

 www.westernrenewableslink.com.au

 1800 WRL WRL (975 975)

 info@westernrenewableslink.com.au

PO Box 638, Ballarat VIC 3353

Have your say and stay informed

Provide feedback on the proposed project or register for project eUpdates by submitting the [feedback form](#).

We appreciate you taking the time to share your feedback with us.

Complaints

If you have a query, a compliment or a complaint, you can let us know by using the online enquiry form on www.westernrenewableslink.com.au.

Or you can let us know by:

 1800 WRL WRL (975 975)

 info@westernrenewableslink.com.au

 PO Box 638, Ballarat VIC 3353

Other sources of information

Australian Energy Infrastructure Commissioner

www.aeic.gov.au including information about how to make a complaint, best industry practice and resources for landholders.

Australian Energy Market Operator

www.aemo.com.au including information on the Regulatory Investment Test for Transmission (RIT-T) process for this project.

Environment Effects Statement Process in Victoria

www.planning.vic.gov.au/environmental-assessments/environmental-assessment-guides/ministerial-guidelines-for-assessment-of-environmental-effects/understanding-the-ees-process including information about the environment assessment process managed by DELWP.

Energy Safe Victoria

www.esv.vic.gov.au including information about the safe design and operation of high voltage transmission networks in Victoria.

Essential Services Commission

www.esc.vic.gov.au including information about the regulation of transmission licenses in Victoria.