

# Community Update

M7-M12 Integration project

November 2024



The M7-M12 Integration project will support future development growth in Western Sydney by improving travel times and congestion. Once complete, the project will provide direct access to commercial and residential hubs, and the new Western Sydney International Airport.

## Project update

There has been significant progress made at all sites for the M7-M12 Integration project. Since August 2024, construction activities have included:

- earthworks within the M7 Motorway median, Elizabeth Drive Connection (EDC) and M7-M12 Interchange
- concrete pavement work and drainage installation in the M7 Motorway median
- bridge piling and structure work along the M7 and M7-M12 Interchange
- retaining wall construction along EDC and M7-M12 Interchange.

**FUN HOLIDAY WORKSHOPS FOR KIDS**

**LEARN, PLAN, PLAY: Become a builder for a day!**

Available for kids between the ages of 5-12

**January 20-24, 2025**  
**Wetherill Park Shopping Centre**

Scan the QR code for more information!

Supported by **NSW GOVERNMENT**





M7-M12 Integration project 48% complete



The Linkt app lets you know about traffic disruptions or delays on the roads you use, so you know when to go. Download the Linkt app and switch on Road Alerts for M7 roadworks.

**Get traffic updates on the go from our Linkt app**

- M7-M12 Integration Project**
- M7 widening
  - - - No M7 widening activities
  - M7-M12 Interchange
  - Elizabeth Drive Connection (EDC)
  - M12 Motorway Central
  - Bridges to be widened
  - New bridges



**Sustainability**

**99%** of construction and demolition waste recycled

**63%** of water is from non-potable sources

**Earthwork**

**80%** of earthwork completed

**Bridges**

**310/353** bridge piles in place

**47/49** bridges in construction

**164/479** bridge girders in place



## M7-M12 Interchange bridge update

A major milestone has been achieved on the project, with the two Incrementally Launched Bridges (ILBs) making moves through Cecil Park!

The red launch noses, which are currently at the front of each bridge, play a crucial role during construction. These launch noses support and guide the concrete bridge segments in place.

The project had some fun with these launch noses and held a competition to name them. For the launch nose guiding the M7 to M12 westbound bridge, the name Elanor was chosen. It pays tribute to Professor Elanor Huntington, a distinguished female Australian engineer celebrated for her contributions to aerospace engineering and for her influential role in engineering academia. Notably, Professor Huntington was the first female engineering professor at the Australian National University (ANU).

The M12 to M7 eastbound bridge's launch nose has been named Gus. This name is a light-hearted acknowledgement of the additional gusset plate (commonly used to join structural steel components together), welded on to the launch nose. This additional gusset plate highlights the design differences between the two bridges.

Elanor leads the westbound bridge, which is set to stand about 16 meters over the M7 Motorway and 21 meters over Elizabeth Drive, making it the longest bridge on the M12 project.

Gus accompanies the eastbound bridge, which will be positioned around 9 meters above the M7 Motorway, contributing to the project's impressive infrastructure.



Aerial view of the ILB launch noses, Elanor and Gus

All 41 bridge piles have been constructed



Launch nose, Elanor, guiding the westbound bridge

170/660 metres completed for the westbound bridge



120/365 metres completed for the eastbound bridge

## Did you know?

The westbound Incrementally Launched Bridge (ILB) will not only be the longest bridge on the M7-M12 Integration project, but the longest ILB in NSW!

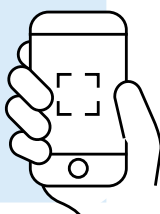
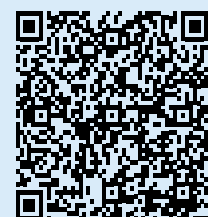
## Have your say

Provide feedback on the M7-M12 Integration project Communication Management Plan. The plan can be found online using the QR code.

To submit your feedback, please email [info@m7m12integrationproject.com.au](mailto:info@m7m12integrationproject.com.au)

Keep up to date with the latest project news.

Subscribe via our website [www.m7m12integrationproject.com.au](http://www.m7m12integrationproject.com.au)



## EV drive day

Transurban

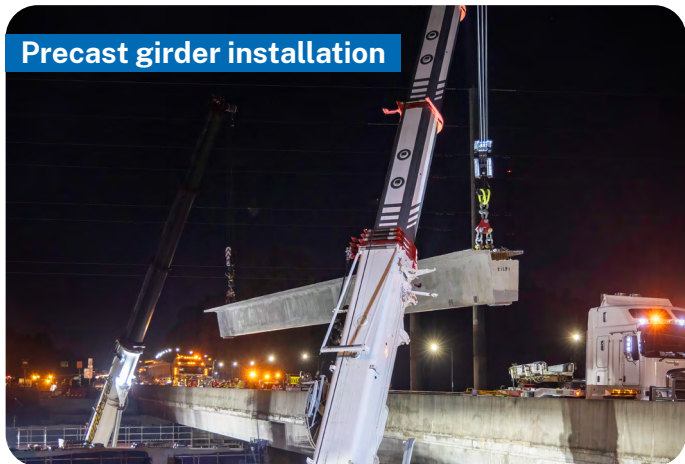
10am-4pm  
Sunday, 17 November  
Sydney Motorsport Park,  
Eastern Creek



Book your track session to  
test-drive an electric vehicle



Precast girders being  
installed at Villiers Road



Precast girder installation

## End of year shutdown

The project will be closed over the holiday period. All work areas and site offices will close from 5pm, Friday 20 December 2024 to 7am, on Monday 6 January 2025.



Girder being lifted into  
position at Villiers Road

## M7 bridge update

There has been significant progress along the M7 Motorway to widen the existing 41 bridges.

At Villiers Road, all 20 piles have been constructed and 24 bridge girders have been installed. The bridge girders weigh between 52 to 61 tonnes and are between 25.9 metres to 32.7 metres in length.

Installing bridge girders is the first step to widen the existing bridge decks. Following this, there will be concrete pours for the bridge deck.

Construction has also started to install bridge girders at Hoxton Park, Reedy Creek, Redmayne Road, and Angus Creek.

## Contact us



24/7 project infoline **1800 712 712**



[info@m7m12integrationproject.com.au](mailto:info@m7m12integrationproject.com.au)



[www.m7m12integrationproject.com.au](http://www.m7m12integrationproject.com.au)

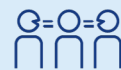


PO Box 98,  
Kemps Creek NSW 2178



Alternatively, scan the QR  
code to stay updated

[www.transport.nsw.gov.au/privacy-statement#Your\\_Privacy](http://www.transport.nsw.gov.au/privacy-statement#Your_Privacy)



**Interpreter service**

For languages other than English call **131 450**  
Arabic • Greek • Hindi • Mandarin • Vietnamese

لطلب خدمة الترجمة الشفهية للغات غير الإنجليزية اتصل  
بالرقم 131 450

Για υπηρεσίες διερμηνείας σε άλλες γλώσσες εκτός από  
τα Αγγλικά καλέστε το **131 450**

अंग्रेजी के अतिरिक्त अन्य भाषाओं के लिए दुभाषिया सेवा  
**131 450** पर कॉल करें

获取英语以外的其他语言口译协助服务可以致电**131 450**

Để có dịch vụ thông ngôn cho các ngôn ngữ khác tiếng  
Anh, gọi số **131 450**