

# M12 Motorway

## Community update

December 2024



Australian Government

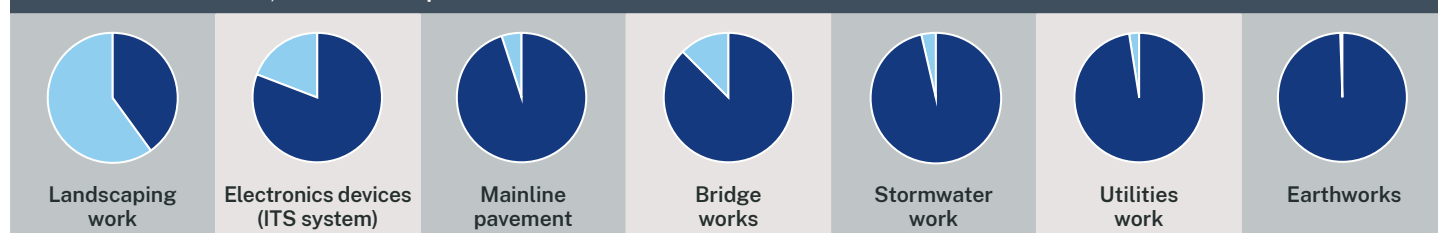


'Male sits on the Emu nest' throw screen artwork on the Elizabeth Drive overbridge near Mamre Road

The Australian and NSW governments are securing a brighter future for Western Sydney's residents, visitors and workers by delivering the new M12 Motorway.

As we wrap up for 2024, the M12 Motorway has made significant progress this year with several key milestones that highlight the project's advancement towards its anticipated opening in 2026. Take a look inside to see some of our key achievements.

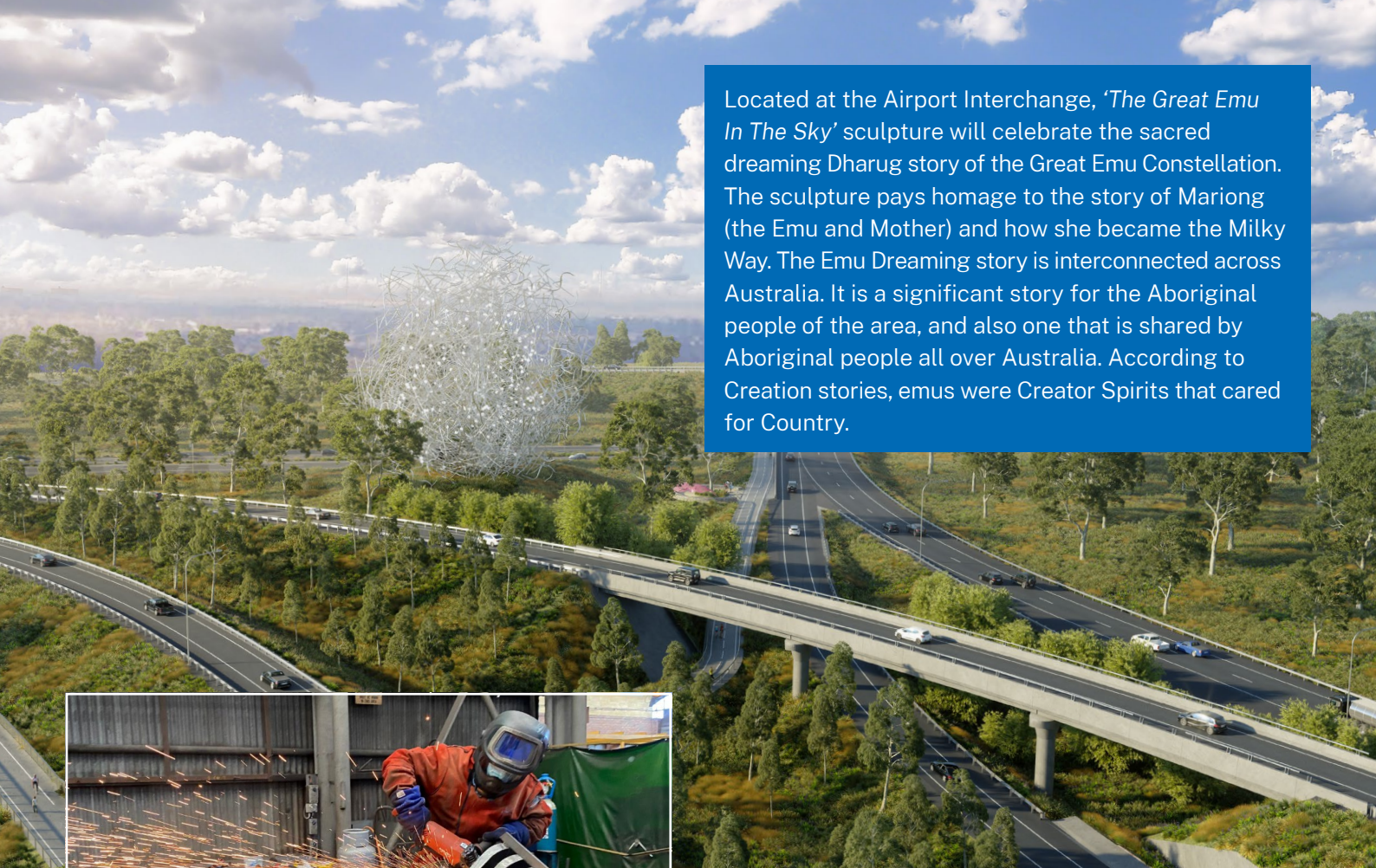
As of December 2024, we have completed:



KEY Work completed Work to be completed

Transport for NSW acknowledges the Dharug people as the Traditional Custodians of the lands on which we work and pays respect to Elders past and present.

Located at the Airport Interchange, *'The Great Emu In The Sky'* sculpture will celebrate the sacred dreaming Dharug story of the Great Emu Constellation. The sculpture pays homage to the story of Mariong (the Emu and Mother) and how she became the Milky Way. The Emu Dreaming story is interconnected across Australia. It is a significant story for the Aboriginal people of the area, and also one that is shared by Aboriginal people all over Australia. According to Creation stories, emus were Creator Spirits that cared for Country.



Building the first pieces at the Chess Engineering factory



All in a days work: pouring the concrete base



Installing the steel columns

## Landmark in the making

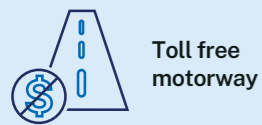
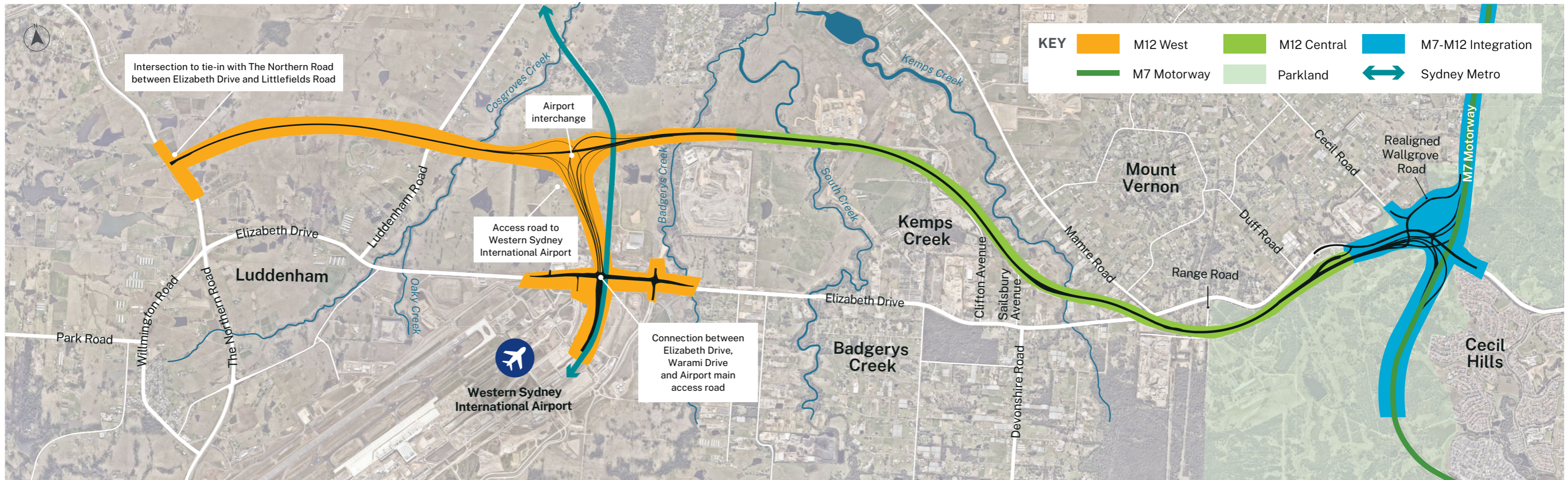
The 30 metre high sculpture will be visible from a number of viewpoints for motorists, pedestrians and bike riders, Metro passengers, and even travellers on flights approaching and departing from the Western Sydney International Airport.

This culturally-significant sculpture was designed by Balarinji, the Indigenous design studio that developed the M12's immersive Aboriginal narrative and public art strategy.

The building of this extraordinary structure began in late July 2024 with the pouring of 600 cubic metres of concrete. Then in late October, we began installing the steel columns fabricated locally in Leppington.

By day the sculpture will represent the emu nest, created by signature sticks made from steel that reference the landscape and materials of the Dharug Country—ridge lines, silcrete, sightlines, waterways and the Aboriginal six seasons. Like the Great Emu Constellation, which changes throughout the Aboriginal six seasons, at night the sculpture will light up and show two emu forms only visible from certain viewpoints; the emu sitting on the nest and the emu in the night sky. We expect to complete the work by mid-late 2025.

The sculpture was created in co-design by the M12 artist cohort; Danny Eastwood, Jamie Eastwood, Danielle Mate-Sullivan, Jasmine Seymour, Leanne Watson and Balarinji studio, and was conceived by Balarinji lead artist on the work, Tim Moriarty.



Toll free motorway



**16 kilometres**  
of new shared path built with lighting for safety



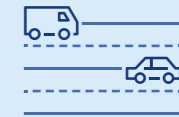
Direct access to Western Sydney International Airport



Travel time savings up to **16 minutes**



Capacity of **52,000** vehicles a day



Four lanes with a wide median to add an extra lane in future

## Upcoming work and milestones

In the coming months, we will:

- start pavement grooving and grinding
- continue installing signage and street lighting
- continue pavement, drainage, Intelligent Transport Systems (ITS) and utility works across different sections of the motorway
- continue installing safety barriers
- complete building Elizabeth Drive, Luddenham Road, Badgerys Creek and Cosgroves Creek bridges
- continue building the Great Emu in the Sky sculpture
- complete building the Airport Interchange bridges
- continue building the shared user path including fencing
- continue landscaping and tree planting.

## Fast facts as of December 2024



**546,211**  
Trees, shrubs, grasses planted



**33/41**  
CCTV cameras installed



**3/6**  
Nodes being built



**10.5**  
kilometres of shared path installed

## First look: rest nodes underway

Work has begun on building six new rest areas at major points along the shared path to provide a small sanctuary for bike users and pedestrians. These rest nodes will offer users a chance to stop, rest and learn about the Aboriginal seasons and rich local history.

Each interpretation node is unique, designed to connect you with the landscape and the cultural traditions of the area. The nodes will reflect one of the six Aboriginal seasons with beautiful seasonal planting, informative signage and artwork that shows the connection between people and the land. Strategically placed for stunning views and shade, these nodes will offer a comfortable break from the sun with Eucalypt leaf canopies and seating areas made from sustainable materials.

Whether you're cycling, walking or simply passing through, the new interpretation nodes along the M12 Motorway will offer a deeper connection to the land, its history, and the Aboriginal culture that shapes the region.



Artist impression of rest node with the Great Emu in the Sky



Rest node nearly complete west of South Creek

# Safe passage for our furry friends

Two new fauna crossings have been installed marking an important step for wildlife movement along the M12 Motorway. A total of four rope crossings will be located on the M12 at Badgerys Creek, Kemps Creek, Cosgroves Creek and within the Western Sydney Parklands. These crossings are vital in protecting and assisting local wildlife safely cross in and around the area.

Fauna crossings are a proven and essential feature in major road upgrades, and the M12 is no exception. Given the area's rural setting and the scale of increased infrastructure in the area, it was important we minimise the impact on local wildlife. By providing these crossings, the project is helping safeguard the welfare of native species and improve driver safety.



Fauna rope crossing under the new Kemps Creek bridge



Students from Luddenham Public School holding local turtles

## Cowabunga: A turtle success

**In a shell of its own, an innovative project led by Western Sydney University in partnership with Transport for NSW has been making waves in turtle conservation.**

To celebrate this success, we invited students and teachers from Luddenham Public School to visit the M12 construction site. The children happily participated in a special turtle encounter and hands-on activities from the 1 Million Turtles community conservation program.

The turtle demonstration was led by expert Associate Professor, Dr. Ricky Spencer from Western Sydney University. The children learned about freshwater turtles, a species essential for the health of local waterways, and even had the opportunity to hold these remarkable creatures.



Local teacher, Kathryn Mitchell said, “we’re absolutely thrilled! This is an incredible opportunity for our school and students, being the first school to tour the M12 West Motorway. The kids had a fantastic time exploring the construction site and were especially excited to take home their own PPE.”



**Scan the QR code to watch our video**

**Turtle trial:** In October 2023, the M12 Motorway project installed temporary barriers along turtle hotspots as a six month trial in Western Sydney to give turtles a safe way to cross the road and avoid harm. Results have been spectacular: between October 2023 to March 2024, not a single turtle was hit or injured. The amazing results mean the next steps are already underway. Transport has committed to install its very first permanent turtle barriers along the M12 Motorway in time for its opening in 2026.



Artist impression of the missing link through Western Sydney Parklands

## Connecting communities

Pedestrians and bike users will have a new link between the M7 shared path and the M12 located in Western Sydney Parklands.

Construction on the 3km link will start in early 2025 and once complete will add an extra 38km return journey between the M7 in Cecil Hills and The Northern Road in Luddenham.

Users will be able to access various destinations in the Parklands including the Wylde Mountain Bike (MTB) and BMX Trails, Gabrugal Yana bushwalk, public amenities and future recreational areas surrounding the Liverpool Offtake Reservoir. This project is a partnership between Transport and Greater Sydney Parklands providing a vital link in the transport network for cycling, walking and running.

**Our site offices will be shut down from Saturday 21 December 2024 to Sunday 5 January. We will resume work on Monday, 6 January 2025.**

During this period, the community can still reach out with any questions or concerns via our 24-hour Project Infoline on 1800 517 155. We wish everyone a safe and happy holiday season and look forward to continuing our work in the new year.



Minister John Graham and local MP Nathan Hagarty overlooking the new Warami Drive

## Name unveiling

The road name for Airport Access Road was revealed as 'Warami Drive' on Friday 6 December 2024 by Minister for Roads, John Graham and Member for Leppington, Nathan Hagarty.

This new road forms part of the link between the M12 Motorway to Elizabeth Drive and the Western Sydney International Airport.

The 'Warami' greeting comes from the Dharug language and means welcome/hello/good to see you. Transport consulted with 57 participants to determine the name, including 43 Dharug people and 14 non-Dharug people.

The new road is 75 percent complete and will be made up of more than 50,000 tonnes of asphalt across eight lanes and four bridges.

Our top priorities for the area include installing concrete paving, verges, kerbs, street lighting and barriers. Upon completion, Warami Drive will be the main entry into the Western Sydney International Airport.

## Contact us



Project Infoline **1800 517 155**



**m12motorway@transport.nsw.gov.au**



**nswroads.work/m12**

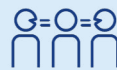


Transport for NSW  
PO Box 973 Parramatta NSW 2124



**For the latest traffic updates:**

Call 132 701, visit [livetraffic.com](http://livetraffic.com) or download the app Live Traffic NSW



### Interpreter service

For languages other than English call **131 450**  
Arabic • Greek • Hindi • Mandarin • Vietnamese

طلب خدمة الترجمة الشفهية للغات غير الإنجليزية اتصل  
بالرقم **131 450**

Για υπηρεσίες διερμηνείας σε άλλες γλώσσες εκτός από  
τα Αγγλικά καλέστε το **131 450**

अंग्रेज़ी के अतिरिक्त अन्य भाषाओं के लिए दुभाषिया सेवा  
**131 450** पर कॉल करें

获取英语以外的其他语言口译协助服务可以致电**131 450**

Để có dịch vụ thông ngôn cho các ngôn ngữ khác tiếng  
Anh, gọi số **131 450**