

New Airport Drive

Traffic change factsheet



Acknowledgement of Country

Transport for NSW acknowledges the Gadigal, Wangal and Bidjigal people of the Eora Nation as the Traditional Custodians of the lands on which we work and pays respect to Elders past and present.

From 11 February 2024, westbound traffic from the existing Airport Drive will move to our opened Twin Arch Bridge.

Following this traffic change, existing Airport Drive will close. Our second Twin Arch Bridge will open and be ready for traffic in the coming months. As we make changes to how you move around the Airport Precinct, please travel with care, follow directional signs, maintain the required speed limit and plan your trip before travelling.



What will change when you close the existing Airport Drive?

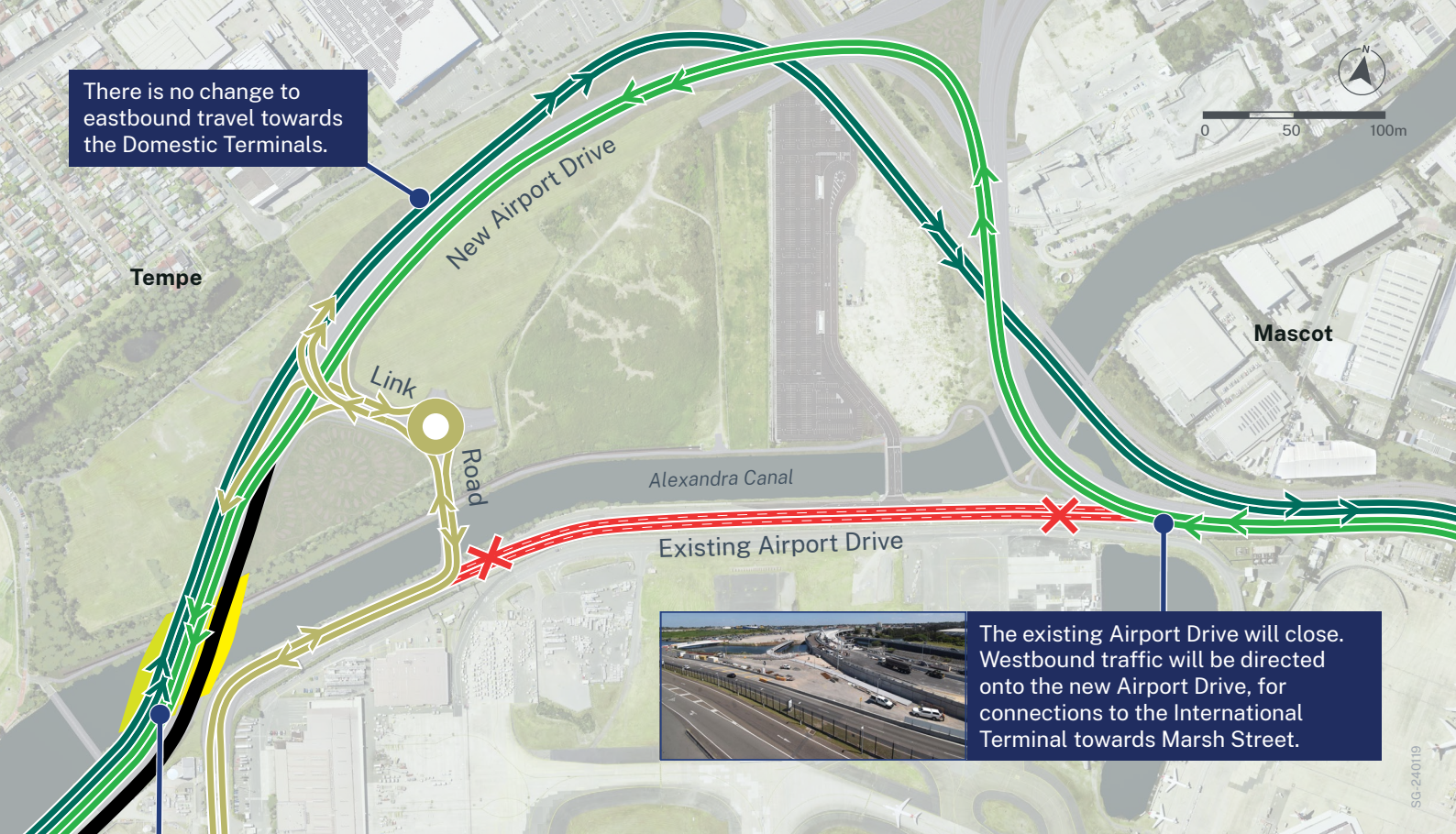


Vehicles going west will be directed onto new Airport Drive and over the already opened Twin Arch Bridge. The new Airport Drive will provide a connection between the International and Domestic Terminals. Signage and on-road-labels will be installed to guide road users wanting to access the International Terminal.



Freight travelling in both directions will access Sydney Airport international freight terminal from the new Link Road connection near the Twin Arch Bridges.





There is no change to eastbound travel towards the Domestic Terminals.



Tempe

Mascot

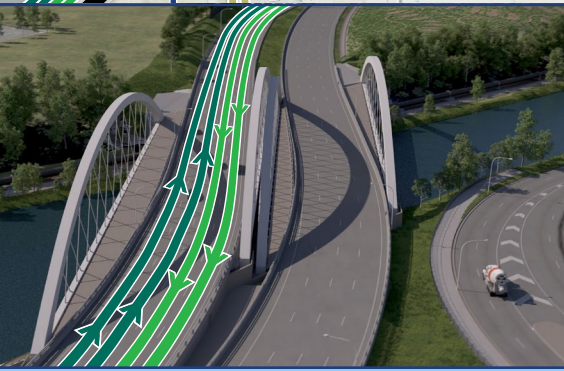
Link Road

Alexandra Canal

Existing Airport Drive



The existing Airport Drive will close. Westbound traffic will be directed onto the new Airport Drive, for connections to the International Terminal towards Marsh Street.



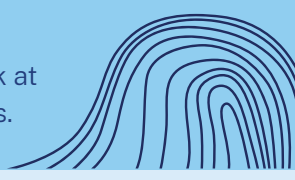
The already open Twin Arch Bridge will carry two lanes of eastbound traffic towards Qantas Drive, and two lanes of westbound traffic towards Marsh Street. Traffic will be moved onto the second Twin Arch Bridge in the coming months.

KEY

- Westbound traffic changes onto new Airport Drive
- Current eastbound lanes unchanged
- Route to enter and exit to the international freight terminal
- Existing Airport Drive lanes close on 11 Feb
- Twin Arch Bridge (open)
- Twin Arch Bridge (under construction)

What other traffic changes will I see as part of Sydney Gateway?

This year we will open our second Twin Arch Bridge and will connect to the wider motorway network at the St Peters Interchange. Stay up to date by visiting our interactive portal or subscribing to updates.



Contact us



Project Infoline **1800 654 446 (24/7)**



SydneyGateway@jhs.com.au



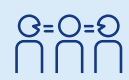
nswroads.work/SydneyGateway



Transport for NSW
PO Box 973 Parramatta NSW 2124



For the latest traffic updates:
Call 132 701, visit livetraffic.com or download the app Live Traffic NSW



Interpreter service

For languages other than English call **131 450**
Arabic • Greek • Hindi • Mandarin • Vietnamese

لطلب خدمة الترجمة الشفهية للغات غير الإنجليزية اتصل
لرقم **131 450**

Για υπηρεσίες διερμηνείας σε άλλες γλώσσες εκτός από
τα Αγγλικά καλέστε το **131 450**

अंग्रेज़ी के अतिरिक्त अन्य भाषाओं के लिए दुभाषिया सेवा
131 450 पर कॉल करें

获取英语以外的其他语言口译协助服务可以致电**131 450**

Để có dịch vụ thông ngôn cho các ngôn ngữ khác tiếng
Anh, gọi số **131 450**

www.transport.nsw.gov.au/privacy-statement#Your_Privacy