

# Sydney Gateway

February 2024  
Project Update

Sydney Gateway will provide a new, toll-free connection from St Peters Interchange to improve journey times to Sydney Airport, the M5 and Eastern Distributor.

The Sydney Gateway team achieved a number of major milestones in 2023, and is now over 80% complete. 2024 will be our biggest year yet, with many major milestones and traffic changes expected across our work sites in Tempe and St Peters as the project nears completion.

We're excited to announce that in February 2024, vehicles travelling on Qantas Drive, towards the International Terminal and the M5, will use our new Airport Drive connection.

Over the next three months, more changes will be visible on the Project. At our Tempe site we are working to complete the southbound Twin Arch Bridge which is launched and in place over the Alexandra Canal.

Over at our St Peters site, bridge works are continuing along Canal Road joining Sydney Gateway with the St Peters Interchange. Other work includes asphaltting and installing barriers, medians and road furniture such as lighting, signage and pedestrian rest areas.

## Upcoming traffic changes - New Airport Drive

From 11 February 2024 the existing Airport Drive will close and westbound traffic will move to the Twin Arch Bridge that is currently opened.

Scan the QR code to learn more about our traffic changes.



Finishing works are continuing across the project.



Work continues on the southbound Twin Arch Bridge before it opens to traffic mid year.

## What is in this update?

In this Project Update you'll find more information on:

- Upcoming traffic changes - New Airport Drive
- What's happening onsite?
- Sydney Gateway's Leading Sustainability Design Rating
- Sydney Gateway working with the community
- What's happening next on Sydney Gateway?

# Upcoming traffic changes - New Airport Drive

From 11 February 2024 the existing Airport Drive will close and westbound traffic will move to the Twin Arch Bridge that is currently opened.

Our second Twin Arch Bridge will open and be ready for traffic in the coming months. As we make changes to how you move around the Airport Precinct, please travel with care, follow directional signs, maintain the required speed limit and plan your trip before travelling.

## Widened Qantas Drive



Scan the QR code to learn more about each traffic change.



## What other traffic changes will I see as part of Sydney Gateway?

This year we will open our second Twin Arch Bridge and will connect to the wider motorway network at the St Peters Interchange. Stay up to date by visiting our interactive portal or subscribing to updates.



# What's happening onsite?

## Tempe

Finishing works at the Tempe site are ongoing and include installation of road furniture, such as traffic signals, street lighting as well as testing power connections and landscaping the site.



Work continues on the southbound Twin Arch Bridge.

Utilities work is continuing in and around Link Road and Airport Drive (westbound) near the International Terminal. We are also installing drainage services under some of the bridges across the Alexandra Canal. This work is done from barges and while this work is underway, includes the closure of sections of the Alexandra Canal.



Installation of utilities services under some of the bridges across the Alexandra Canal.



# St Peters

Finishing works continue on the bridge across Canal Road which will connect Sydney Gateway to the St Peters Interchange. The footpath on Canal Road, which has been closed during this work, is expected to reopen in March.

We are also installing the final road surface and line marking all roads within the site. Installation of road furniture, such as traffic barriers, traffic signals, street lighting, landscaping and general finishing works are continuing across the project.

The pedestrian and cycle path bridge across the Alexandra Canal is due to be opened in the first quarter of 2024.



We are laying the final road surface at our St Peters site.

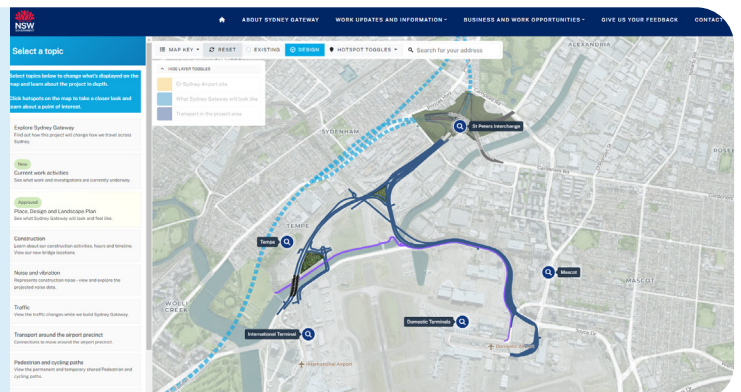


Installation of road furniture is ongoing across the project.



Construction and finishing works on the pedestrian and cycle path along Alexandra Canal.

Scan the QR code to view  
our current work  
activities on our interactive map





# Sydney Gateway achieves Leading Design Rating

The Sydney Gateway Project has achieved an Infrastructure Sustainability Council (ISC) 'Leading' rating for design, demonstrating the project's commitment to ensuring sustainable outcomes throughout the delivery of the project.

Andrew Deck, the Delivery Partners Project Director, says that a 'Leading' rating is a highly prized industry benchmark and recognises the Sydney Gateway Project's efforts to implement sustainability outcomes throughout the construction phase.

"This achievement reflects the project's commitment to deliver long-lasting economic, social and environmental outcomes, while delivering a major transport infrastructure project to the people of Sydney," Mr Deck said.

"The implementation of pedestrian and cycling links and the emphasis on reducing embodied carbon emissions demonstrate our dedication to a greener future and a thriving, interconnected community."



Growing local native flora is a priority on the Sydney Gateway Project which assists in the rehabilitation of our fauna biodiversity.

Transport for NSW and Sydney Gateway's Delivery Partner, John Holland and Seymour Whyte Joint Venture, have worked together to deliver a raft of innovative and sustainable outcomes for the project and have embraced innovative design strategies in the pursuit of sustainability and reducing its environmental impact.

The project has reduced its environmental impact by a remarkable 66,000t CO<sub>2</sub>-e. This is equivalent to the emissions generated by 14,000 vehicles over a year and represents a significant saving of the environment and resources.

Other Sydney Gateway initiatives that contributed to the Leading rating include:

- Using excess soil as the primary material for noise reduction mounds to provide a visually appealing solution that seamlessly blends with the natural surroundings to create a greener urban landscape.
- Using grassed water channels instead of concrete-lined channels as a sustainable alternative to effectively manage stormwater, reduce flooding, enhance aesthetics, and improving water quality.
- Achieving strong positive social impacts through the creation of jobs and employment opportunities. To date, Sydney Gateway's Delivery Partner, John Holland and Seymour Whyte JV has reached over 100% of its \$23 million Aboriginal Participation in Construction (APIC) target.

The ISC rating scheme is Australia and New Zealand's only comprehensive rating system for evaluating sustainability across design, construction and operation of infrastructure.

At the completion of the project, ISC rating scores from each package of works will be combined to provide an overall rating for the Sydney Gateway project.



Continuing construction of the pedestrian and cycle path along Alexandra Canal.



# Working with the community

## Sydney Gateway's annual Toy Drive brings joy to Bayside Women's Shelter

In a heartwarming display of community spirit, this year's Sydney Gateway Toy Drive has left a lasting impact on the women and children at the Bayside Women's Shelter. The Project saw an outpouring of generosity from staff, workforce and subcontractors which resulted in the donation of hundreds of children's books and toys.

The Bayside Women's Shelter is a vital support hub assisting up to 30 families at any given time in the Bayside area. As part of a broader network of women's shelters, the facility plays a crucial role in providing refuge for families who often find themselves relocated with only 24 hours' notice, carrying only what they can manage.

General Manager Sallianne Faulkner expressed her gratitude on behalf of the shelter for the Project's overwhelming generosity. She noted that the scale of donations from Sydney Gateway not only made the Christmas season extra special for the shelter's residents but also ensured an ongoing positive impact. She said that the number of donations meant they could be used beyond the festive season as part of the welcome packs given to women and children who arrive at the center throughout the year.

The Bayside Women's Shelter staff were blown away by the generosity shown by the Sydney Gateway Project and emphasised how important these contributions are in offering comfort and support during challenging times.



General Manager of Bayside Women's Shelter, Sallianne Faulkner (centre) with some of the donations.

## What's happening next on Sydney Gateway?

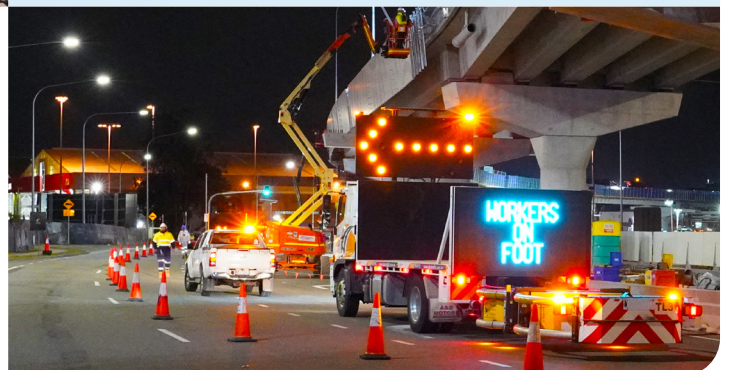


### Safety is our priority

To keep you and our workers safe, we have footpath, road and lane changes in place while we carry out our work.


As we make changes to how you move around the Airport Precinct, please travel with care, follow directional signs, maintain the required speed limit and plan your trip before travelling.

Scan the QR code to register and learn more about upcoming works.



### For enquiries or complaints:

 [nswroads.work/SydneyGateway](https://nswroads.work/SydneyGateway)

 1800 654 446 (24/7)

 [SydneyGateway@jhs.com.au](mailto:SydneyGateway@jhs.com.au)



### Translating and interpreting service

If you need help understanding this information, please contact the Translating and Interpreting Service on 131 450 and ask them to call us on 1800 654 446.