

Construction notification

January 2024

## Out of hour works – Lamont Street

Construction activity is ongoing at the Powerhouse Parramatta project site. Work is progressing and activity is required on Lamont Street, at the intersection of Wilde Avenue in Parramatta, to enable electrical services identification work to occur.

### Key dates

From Monday 5 February to Friday 9 February 2024

### Location

Lamont Street, Parramatta

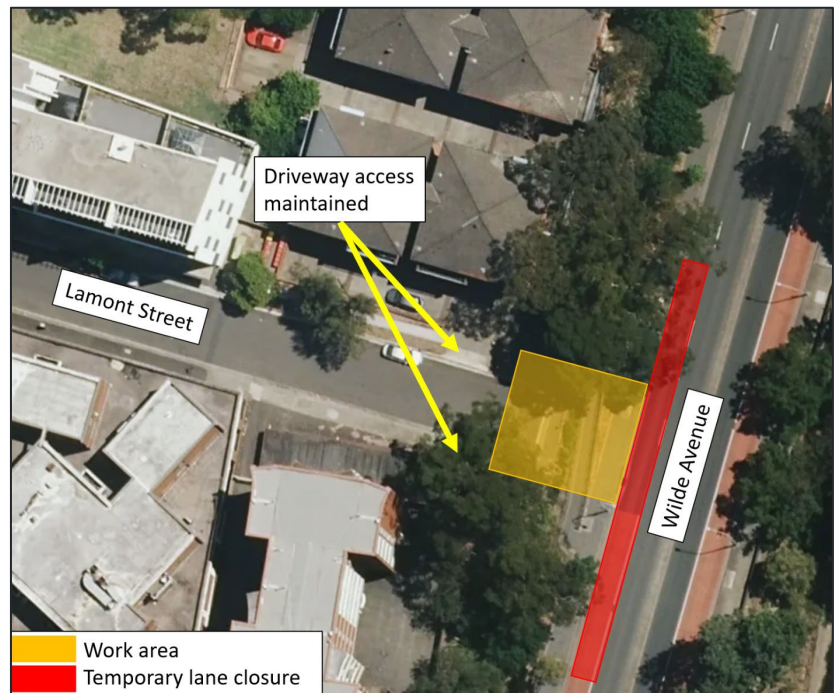
### Out of hours work in Lamont Street

From **Monday 5 February to Friday 9 February**, work will take place in Lamont Street to identify high voltage conduits in the ground.

The identification of these services is required to allow for future electrical connection works associated with Powerhouse Parramatta.

Due to work adjacent to a main road, and the required temporary closure of one lane on Wilde Avenue, these works will be completed outside of standard construction hours, between **9pm and 5am**.

Activity each night will involve saw cutting, use of an excavator to remove concrete and vacuum truck works to expose services in the ground. The exposed areas will then be covered by road plates in preparation for future connection works.



There will be no impact to power supply for local residents throughout this work.

### Traffic management

Pedestrian and vehicle access around the work area will be maintained at all times.

Traffic control will be in place to manage the temporary closure of one lane on Wilde Avenue throughout each shift.

### Health and safety

All effort will be made to minimise noisy activities in Lamont Street, with a focus on completing noisier activities as early in each shift as possible.

Strict environmental and planning controls are in place to manage noise, dust and vibration.

## New construction hours

The Powerhouse Parramatta project modification two (SSD-10416-Mod-2) has now been approved, which includes extended Saturday construction hours.




The new approved construction hours are now:

- Monday to Friday, 7am to 6pm
- Saturday, 8am to 5pm.

## More information

We are committed to keeping you informed and regular updates will be provided.

Contact us for construction related questions, feedback or complaints:

 1800 574 931  [powerhouse@lendlease.com](mailto:powerhouse@lendlease.com)  [insw.com/powerhouseparramatta](http://insw.com/powerhouseparramatta)

Scan the QR code to receive the latest project updates



If you need an interpreter, please call TIS National on 131 450 and ask them to call Infrastructure NSW on 1800 931 109. Our business hours are 8am – 5pm.