

# Access changes to Cahill Expressway - Mount Street underpass opens soon

Warringah Freeway Upgrade

August 2025



Transport for NSW acknowledges the Cammeraygal people of the Eora nation as the Traditional Custodians of the lands on which we work and pays respect to Elders past and present.

**We are simplifying the Warringah Freeway, making it safer and easier to use, and more efficient and reliable for the benefit of all road users, including public transport users.**

**We are excited to announce we will be opening the new Mount Street underpass soon. We thank you for your patience while we constructed the new underpass. We will provide an update when the opening date is confirmed.**

The Mount Street underpass has been built to provide a dedicated access for Cahill Expressway motorists traveling to City East, Eastern Suburbs and Sydney Airport. The underpass is 46.6 metres long and 5.8 metres wide and was constructed by excavating around 3000 cubic metres of sandstone and rock.

The Mount Street underpass is part of the Mount Street interchange and Alfred Street off-ramp upgrades, which will provide dedicated, separated access for general motorists from the Warringah Freeway to High Street and the Cahill Expressway.

## Key benefits

The new Mount Street underpass will provide:



A dedicated citybound connection for general traffic travelling southbound via the Warringah Freeway



Increases the ability of the road network to cope with traffic incidents



Separation from the new dedicated southbound bus lane making your journeys safer and more reliable



A dedicated lane for general traffic travelling to the Cahill Expressway



Improved, faster and more reliable bus journeys with a continuous southbound bus lane to the Sydney Harbour Bridge in the future



Simplified traffic flow on the Warringah Freeway, making trips more straightforward and therefore safer

## What to expect

Motorists are advised of changes to the southbound access to the Cahill Expressway from the Warringah Freeway.

- From south of the Ridge Street shared user bridge, the general traffic lane and the dedicated bus lane to the Cahill Expressway will be diverged around a new worksite.
- The general traffic lane for the Cahill Expressway will shift to the left side of the worksite. The dedicated bus lane will remain where it is and will be on the right side of the worksite.
- For southbound access to the Cahill Expressway, general motorists will need to drive to the left of the worksite, temporarily shifting away from the mainline. Motorists will then be able to travel through the newly constructed Mount Street underpass and continue to the Cahill Expressway south of High Street.
- Motorists are advised to expect changed traffic conditions and refer to the directional signs and pavement markings that will be in place on the approach to, and at the diversion point.
- The speed limit will remain at 60km/h.
- Motorists travelling to City East/Eastern Suburbs/ Airport should continue driving on Cahill Expressway (Lane 8) through the new Mount Street underpass.
- There will be temporary barriers around the work areas for up to eight months as motorists drive through the new Mount Street underpass.

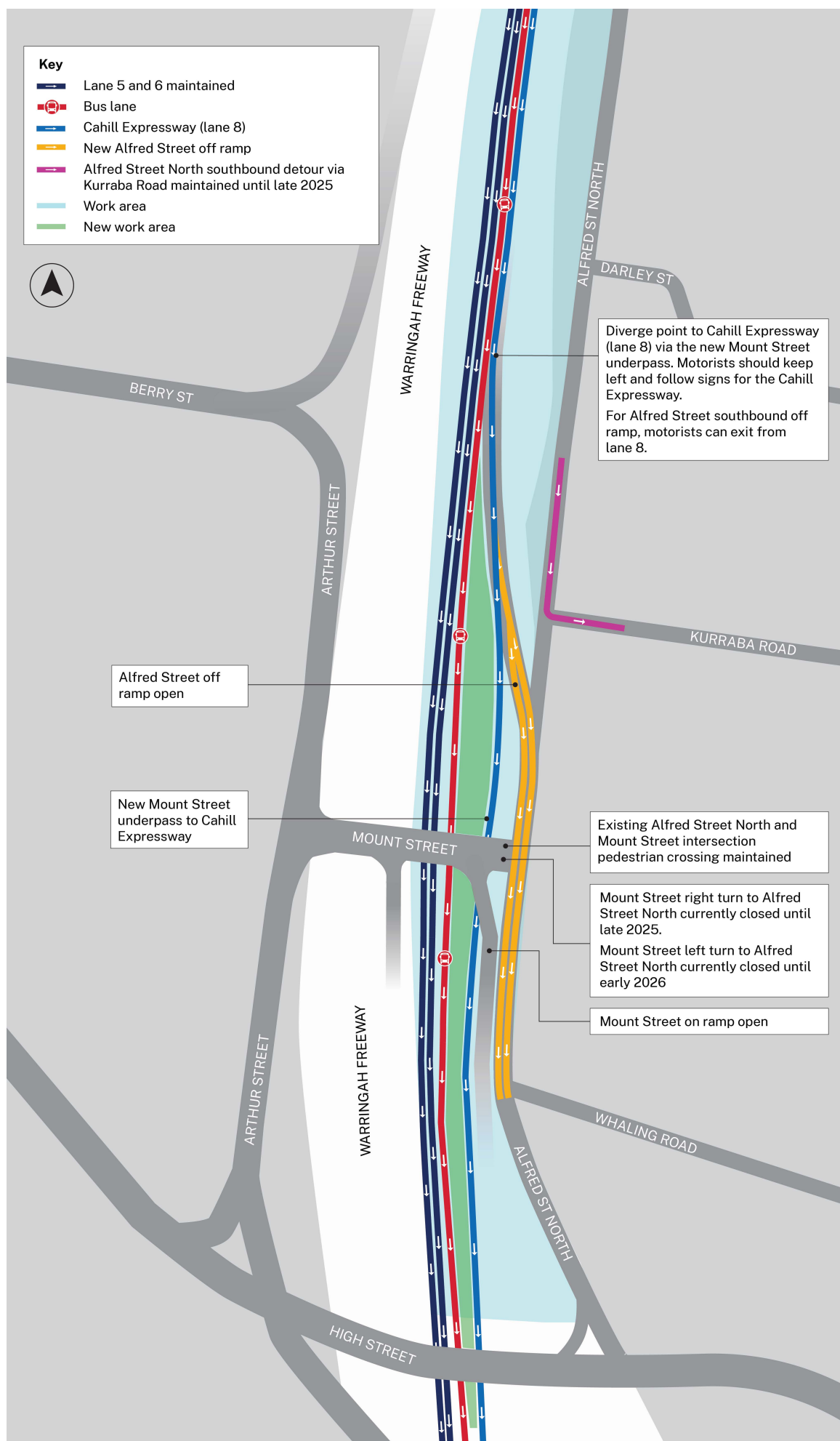
Motorists are advised to plan ahead, keep to the speed limit, follow the signs and use caution while adjusting to the traffic change.

For up-to-date traffic information, visit [livetraffic.com](https://www.livetraffic.com).

Please note, some of the key benefits won't be realised until the whole Warringah Freeway Upgrade project is complete.



To subscribe to the email distribution list for this project, please contact [whtbl@transport.nsw.gov.au](mailto:whtbl@transport.nsw.gov.au)



Map 1: Mount Street underpass access on the Warringah Freeway.



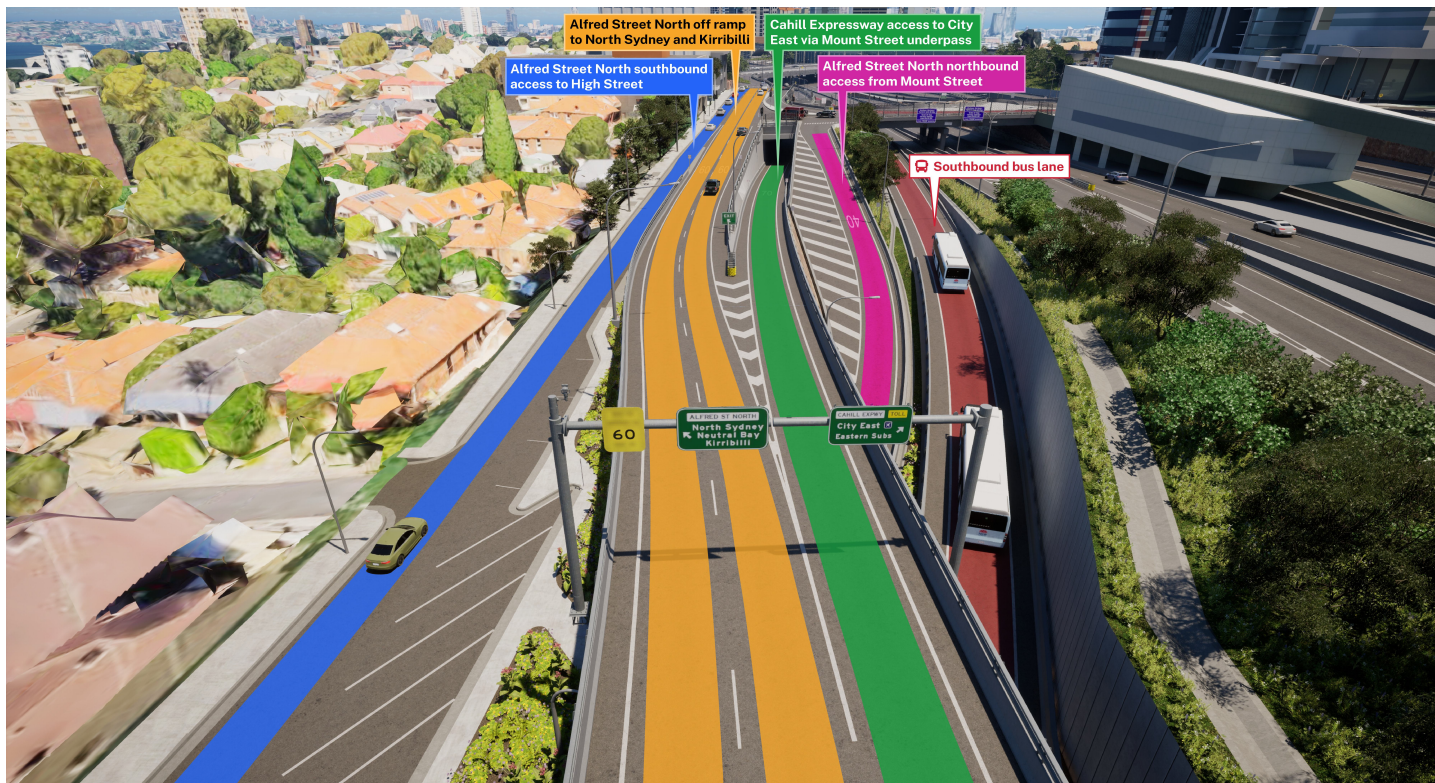


Image 1: Artist impression of the final Mount Street interchange lane configuration due to be completed in 2026.

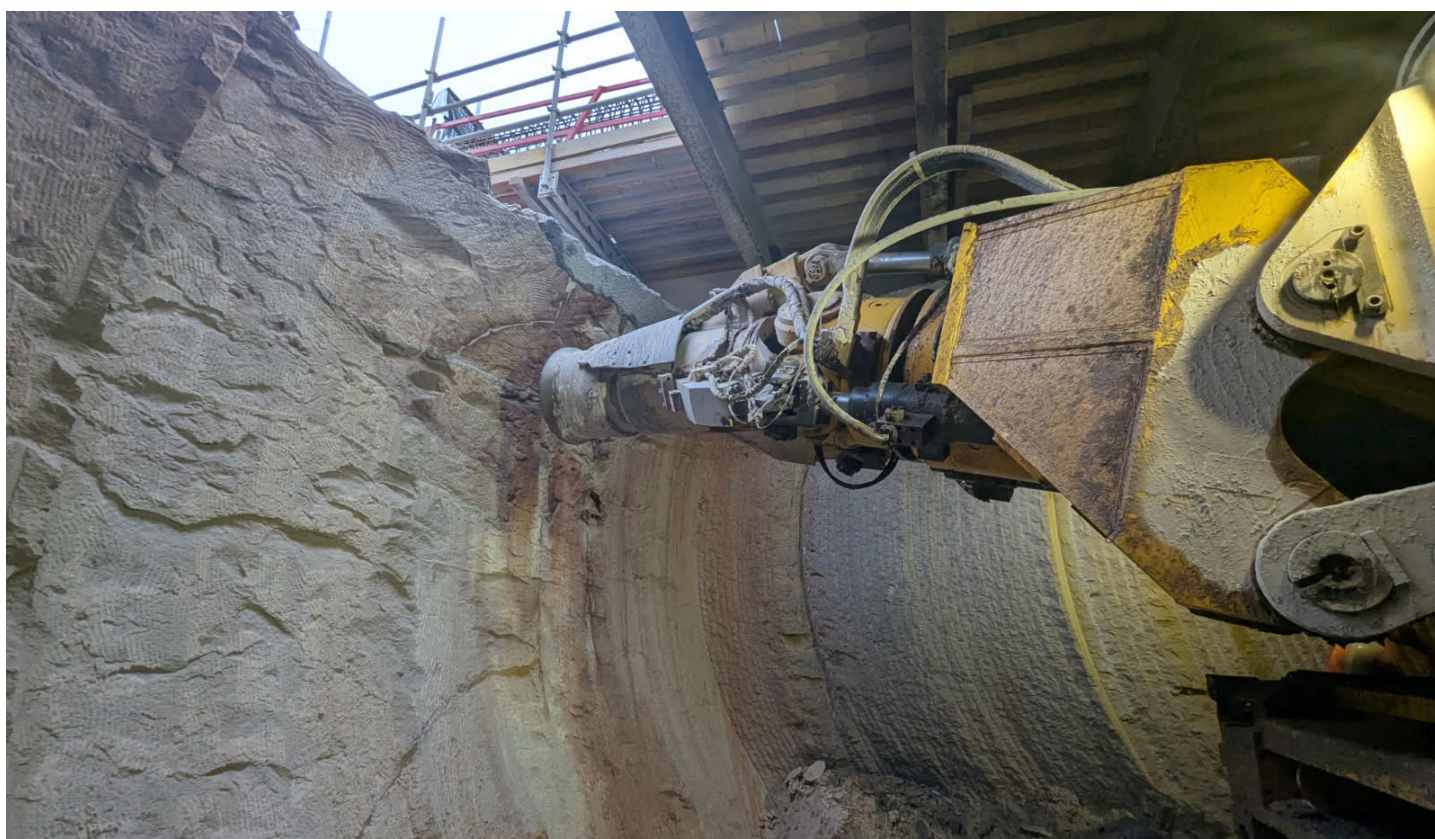


Image 2: A hard rock continuous miner was used to create the new underpass structure, excavating around 3000 cubic metres of sandstone and rock.



## Temporary traffic changes

To finalise work in preparation for the new Mount Street underpass opening, the Alfred Street off ramp will be temporarily closed on the below dates to safely finalise work.

- 10pm to 5am, Monday 25 August 2025
- 10pm to 6am, Friday 29 August 2025

Future night time closures will be required following the underpass opening. This will allow for changes to line marking or signage that may be needed after the underpass is opened and traffic is monitored.

There will be temporary traffic changes in place while we are carrying out work over the weekend. Motorists are advised to follow speed limits, signage and take caution while travelling through the area.

Visit **LiveTraffic.com** to learn more and plan ahead.

## Future traffic changes

There will continue to be temporary closures at Mount Street and Alfred Street North to safely finalise work for the Mount Street interchange like new landscaping, parking, lighting and signage.

The Mount Street interchange will be opened in stages as work progresses. We will notify you in advance of any road openings.

1. New Falcon Street southbound bus lane to Sydney CBD opening October 2025
2. Mount Street and Alfred Street North intersection opening late 2025
3. Alfred Street North between Kurraba Road and Mount Street reopening late 2025
4. Left turn access from Mount Street to Alfred Street North opening early 2026

We appreciate your ongoing patience while these closures are in place and working as hard and quickly as we can to reinstate access.

## Southbound access to the Cahill Expressway is changing

### Keep left and follow signs



## Managing our impacts

Residents may experience periods of high noise throughout this work. The level of impact will vary depending on the proximity to work locations. To minimise the impact of this work we will:

- turn off machinery when not in use
- use acoustic blankets to minimise noise, where feasible
- direct temporary lighting down and away from houses
- fit equipment with devices to minimise noise, particularly non-tonal reversing beepers.

All work will be carried out in line with the project's environmental approvals. All our work zones and equipment laydown areas will be separated from local traffic, pedestrians and cyclists.

The equipment we will be using will include excavators, concrete saws, concrete hammers, rock breaking equipment, hydro-demolition saws, mobile cranes, line marking equipment, heavy vehicles including tipper trucks, concrete pumps, concrete and vacuum trucks, light vehicles, water carts, small power tools, elevated work platforms, asphalt compactors, vibratory rollers, generators, road profiling machines, asphalt paving equipment, rock bolting machines and bobcats, kerb paving machines.



For more information on how we manage noise, please refer to our 'Managing Construction Noise fact sheet' available online at [nswroads.work/wfuportal](https://nswroads.work/wfuportal) or **scan the QR code.**



Please **scan the QR code** to view the "How to use the new Warringah Freeway" fact sheet or visit [nswroads.work/wfuportal](https://nswroads.work/wfuportal).



Please **scan the QR code** to view the "Bridges and structures" fact sheet or visit [nswroads.work/wfuportal](https://nswroads.work/wfuportal).



**Scan the QR code** to view our latest notification for more information about the new Alfred Street off ramp access.

## Contact us



**1800 931 189**



**[whtbl@transport.nsw.gov.au](mailto:whtbl@transport.nsw.gov.au)**



**[nswroads.work/wfuportal](https://nswroads.work/wfuportal)**



**Interpreter service**

For languages other than English call 131 450