

Transurban | CANAL TO CREEK

PRIZE

IN PARTNERSHIP WITH



STUDENT ART COMPETITION

*\$15,000 in prizes to be won**

Open to all students in
Years 7 to 10, Australia wide!



15 Aug
ENTRIES
OPEN

To find out more visit

canaltocreek.com



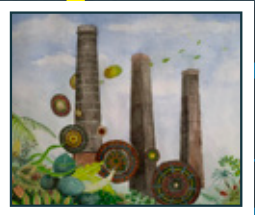
4 Nov
ENTRIES
CLOSE



JADA-LEE, Year 10 (2021) ALWAYS



MOLLY, Year 8 (2021) JOURNEY



KAIL, Year 9 (2021) GROWTH



@CanaltoCreek

*Subject to Terms and Conditions which are available at canaltocreek.com

Transurban Canal to Creek



Canal to Creek is a diverse program of 21 signature artworks between St Peters and Beverly Hills, NSW. Artworks include contemporary sculptures, artist-designed playgrounds, large-scale murals and an immersive lighting installation.

Canatocreek.com is an online, interactive portal that allows teachers, students and art lovers to engage with these incredible artworks no matter where they are.

Transurban | CANAL TO CREEK PRIZE

- The Canal to Creek Prize is open to students from Years 7 to 10, Australia wide.
- Artworks must be original and respond to this year's theme - 'Connections'.
- Artworks can be two-dimensional or three-dimensional (e.g. paintings, sculptures, digital).
- Any art material or combination of materials may be used.
- Artworks to be submitted in a JPG or PNG file, at least 1500 pixels wide.
- Artworks must have the ability to be digitally reproduced by Transurban for promotional purposes.
- Entries will need a title and an accompanying artist statement, limited to 100 words.
- A virtual interactive gallery will showcase all successful entries and be publicly available. For privacy reasons, only first name and school name will be published.