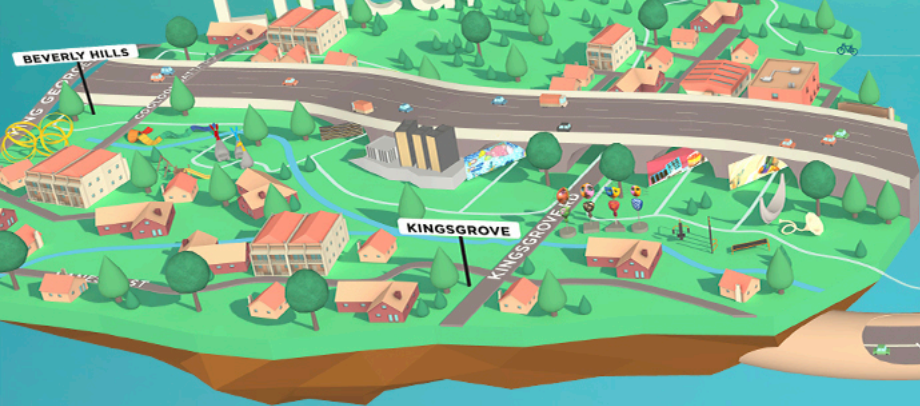


Canal to Creek

WestConnex | Transurban

THE WESTCONNEX PUBLIC ART PROGRAM

Linear Park



St Peters



WestConnex | Transurban

VADEA
NSW

VISUAL ARTS & DESIGN
EDUCATORS ASSOCIATION

Oysters Eating Rainbows: Emily Crockford & Studio A



ARTIST CONCEPT IMAGE

WestConnex Public Art Program - Canal to Creek - Overview

OYSTERS EATING RAINBOWS: EMILY CROCKFORD & STUDIO A

The WestConnex Public Art Program - Canal to Creek is a program of commissioned artworks that will activate new and existing parklands between St Peters and Beverly Hills.

The works include contemporary sculpture, artist-designed playgrounds, a writer's walk, large-scale murals and immersive lighting installations.

This slide deck will specifically look at one of the murals commissioned for the Canal to Creek program titled *Oysters eating rainbows* by artist Emily Crockford and Studio A.



Karingal underpass, Kingsgrove



Oysters Eating Rainbows

OYSTERS EATING RAINBOWS: EMILY CROCKFORD & STUDIO A

Emily Crockford (of Studio A) transformed Kingsgrove's Karingal underpass, a concrete pedestrian tunnel below the M8, into an immersive art experience using large-scale painting.

Titled *Oyster's Eating Rainbows*, this artwork aims to create a natural wonderland within the tunnel environment. It is inspired by the ecological abundance and diversity of the area and its waterways: the birds, fish, yabbies and oysters. It is also a reminder of the fragility of these habitats and the importance of preserving skies, branches and riverbeds for future generations to come.

Research Activity

Research Studio A at their website <https://www.studioa.org.au>

- What is Studio A?
- What does the organisation do?
- Why is Studio A important?



EMILY CROCKFORD MURAL IN PROGRESS



OYSTER'S EATING RAINBOWS MURAL IN PROGRESS

In the classroom - Introduction activity

OYSTERS EATING RAINBOWS: EMILY CROCKFORD & STUDIO A

Look and engage: first impressions

- What materials are used to create the mural?
- What does the subject matter remind you of?
- How do you think the audience will engage with the work?



About Emily Crockford

OYSTERS EATING RAINBOWS: EMILY CROCKFORD & STUDIO A

"I like my own techniques, playing and experimenting with different ideas. I want to be a great artist, and experiment" - Emily Crockford

- Crockford's signature style includes blocks of strong colour, intricate patterns, organic and geometric shapes
- Well known for her major public art commissions
 - A 39 metre mural for Westpac's Concord offices,
 - two works for the City of Sydney's Creative Hoardings Project (Midnight Zoo, 2019 & Sydney Opera House at Night, 2017)
 - A collaborative mural for the University of Technology Sydney (Bird Life Jungle Disco, 2019)
 - A major hoarding for Lendlease at Barangaroo titled Garden Pop Bird Bop (2020)
- Emily Crockford belongs to Studio A, NSW's only supported studio for professional artists with intellectual disability. Studio A aims to ensure Australia's cultural life includes diverse voices.

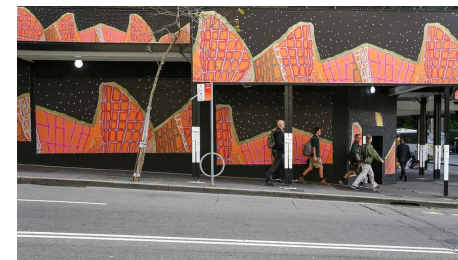
 **Watch Crockford's Artbites: Studio A on ABC iview [here](#)**



*Self-portrait with Daddy in the daisies, watching the field of planes acrylic on canvas 198 x 84 cm
Archibald Finalist 2020
Image from AGNSW
<https://www.artgallery.nsw.gov.au/prizes/archibald/2020/30210/>*



39 metre long mural for Westpac Concord October 2018.



Sydney Opera House at Night, licensed by the City of Sydney displayed on construction hoardings around the city.

MURAL IMAGES PROVIDED BY THE ARTIST AND STUDIO A

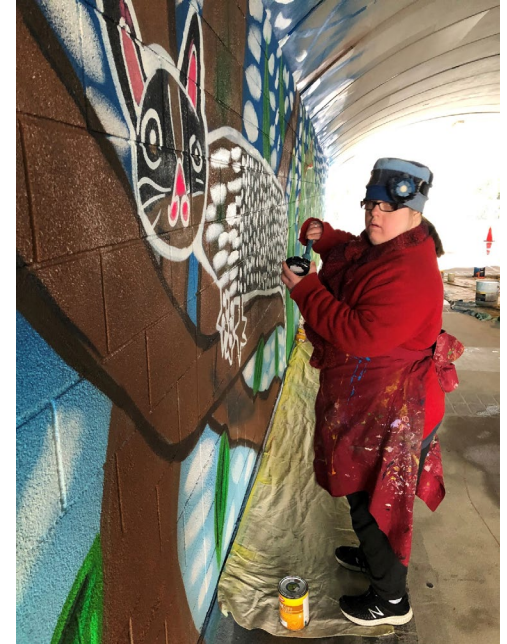
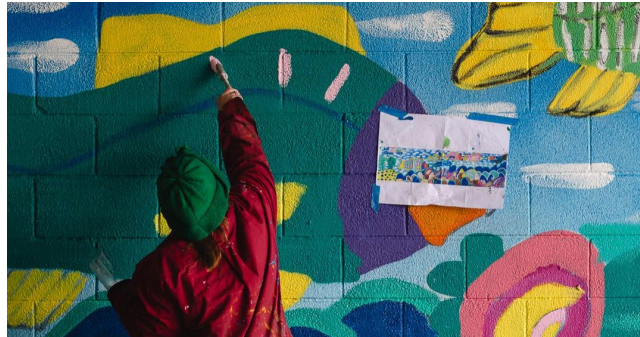
Artist Intentions

OYSTERS EATING RAINBOWS: EMILY CROCKFORD & STUDIO A

- Revitalise the existing site of Kingsgrove Karingal underpass
- Pay homage to the local natural landscape and animals
- To depict the abundance and diversity of the local area and its waterways
- A reminder of the fragility of these habitats and the importance of preserving our skies, branches and riverbeds for future generations to come.

I love to imagine the creatures under the water and the possums sitting on the trees looking at the house. I love foxies in the tree and owls having a happy life. Birds singing in moo moo trees. I wish for my tunnel audience to swim with my river creatures

- Emily Crockford



Process

OYSTERS EATING RAINBOWS: EMILY CROCKFORD & STUDIO A

1. Initial sketch and panoramic painting based on local landscape and animal photographs



2. Painting scanned and uploaded into Photoshop. Components of the mural design are edited and arranged into a final composition.



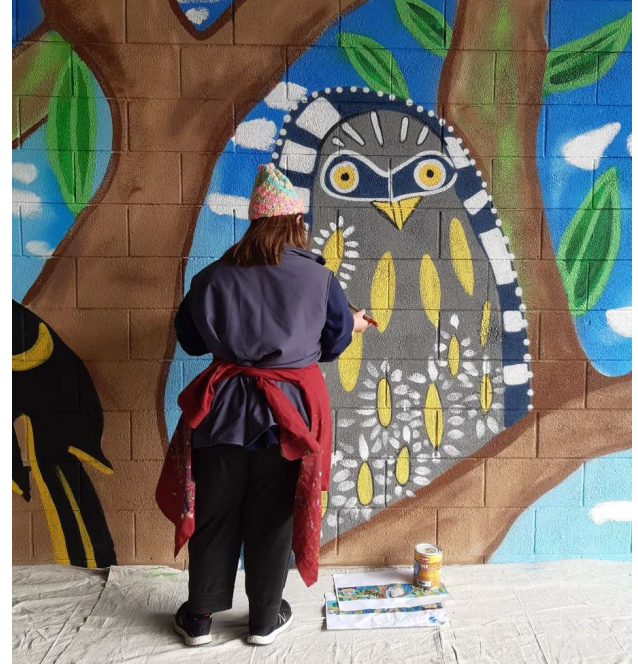
Process

OYSTERS EATING RAINBOWS: EMILY CROCKFORD & STUDIO A

3. Tunnel wall is cleaned and an undercoat applied to the surface where the mural will be painted



4. Crockford uses a print out of the design as a visual reference as she hand paints part of the mural onto the tunnel surface



Conceptual Framework - Activity

OYSTERS EATING RAINBOWS: EMILY CROCKFORD & STUDIO A

Research and find two other examples of public murals in NSW.

What are the murals similarities and differences compared to Crockford's artwork?

In comparing and contrasting the artworks consider;

- Visual style (realism, surrealism, abstract)
- Subject matter (people, places etc.)
- Is there a connection to place?

▶ Watch the artist video for insights into artwork, concept and audience.

