



# Four month out-of-hours work look ahead

## M7-M12 Integration project

March - June 2025



We acknowledge the Dharug people as the Traditional Custodians of the lands on which we work and pay respects to Elders past and present.

The M7-M12 Integration project will support future development growth in Western Sydney by improving travel times and congestion. Once complete, the project will provide direct access to commercial and residential hubs, and the new Western Sydney International Airport.

### Out-of-hours work

Out-of-hours work activities are planned between **6pm and 7am, Monday to Friday morning**, and **6pm Friday to 8am Saturday**.

We will not complete noisy work in the same location more than two nights in a row, three nights in a week and ten nights in a month, unless otherwise notified.

Work may occur outside of these hours, subject to additional approval.

### Planning for future out-of-hours work

Some of our work occurs outside of standard construction hours. We welcome any queries or feedback you have regarding out-of-hours work.

You can help us plan for future night work by letting us know of any important dates and times we should avoid. For example, this may include nights before a major exam. We will do our best to

factor these dates into our night work schedule. If you have any other needs that you would like us to take into consideration, please contact our Community Relations Team to discuss your circumstances.

### Keeping you informed

There will be changed traffic conditions around our work areas. These changes include a combination of lane, road and ramp closures, detours and reduced speed limits.

Traffic control and signage will be in place to assist road users and pedestrians while we are working.

Access for emergency service vehicles and public transport will be maintained at all times.

Plan your trip by visiting [livetraffic.com](http://livetraffic.com) or the project website.

### Stay connected!

Keep up-to-date with the latest project news. Subscribe via our website:

[www.m7m12integrationproject.com.au](http://www.m7m12integrationproject.com.au)



## Out-of-hours work (OOHW) activities

Please note, noise levels and their impacts are subject to the location and distance of the property from the work site.

OOHW Activities	Typical equipment	Location (subject to additional approval - refer to map on page 4)	Timing and noise impact at nearest receiver
Vegetation and tree removal	Chainsaws, slashers, excavators, lifting equipment, elevated work platforms, bulldozers, power and hand tools, light towers, mulchers, light and heavy vehicles	<ul style="list-style-type: none"> <li>Elizabeth Drive Connection (EDC) area</li> <li>M7-M12 Interchange</li> <li>In the centre of the M7 Motorway, along ramps, at intersections and along adjacent streets</li> <li>M7 Motorway under bridge locations</li> </ul>	March-June 2025 <b>Moderate-noisy</b>
Barrier and signage installation, maintenance and removal	Cranes, excavators, concrete pumps and vibrators, elevated work platforms, lifting and rigging equipment, light and heavy vehicles, vacuum trucks, power and hand tools, light towers, graders, jackhammers, air compressors, water carts, trailers, compactors, generators	<ul style="list-style-type: none"> <li>EDC area</li> <li>M7-M12 Interchange</li> <li>M7 Motorway widening area, major intersections, local roads at bridge locations</li> <li>M4 Motorway northbound off ramp and southbound on ramp</li> <li>Old Wallgrove Road northbound on ramp and southbound off ramp</li> </ul>	March-June 2025 <b>Moderate-noisy</b>
Earthworks	Excavators, profiler, compactors, rock hammers, rollers, bulldozers, light and heavy vehicles, lifting equipment, power and hand tools, light towers	<ul style="list-style-type: none"> <li>EDC area</li> <li>M7-M12 Interchange</li> <li>M7 Motorway widening area</li> <li>M7 bridge locations</li> </ul>	March-June 2025 <b>Noisy</b>
Utility works, including investigation, installation, relocation and outages	Cranes, excavators, road saws, light and heavy vehicles, rigs, elevated work platforms, pole grab trucks, compactors, rock hammers, power and hand tools, light towers, vacuum truck	<ul style="list-style-type: none"> <li>EDC area</li> <li>M7-M12 Interchange</li> <li>M7 Motorway widening area including bridges, shared user paths, ramps, intersections, adjacent streets and footpaths</li> </ul>	March-June 2025 <b>Moderate-noisy</b>
Geotechnical investigation, including surveying, potholing, bridge assessment and monitoring	Rigs, vacuum trucks, drills, road saws, excavators, lifting equipment, light and heavy vehicles, power and hand tools, light towers, water carts	<ul style="list-style-type: none"> <li>EDC area</li> <li>M7-M12 Interchange</li> <li>M7 Motorway widening area including shared user paths, ramps, intersections, adjacent streets and footpaths</li> </ul>	March-June 2025 <b>Moderate-noisy</b>
Traffic Control Signal (TCS) works	Cranes, lifting equipment, light and heavy vehicles, rattle guns, core drills, vacuum trucks, power and hand tools, traffic control, road saws, light towers, generators	<ul style="list-style-type: none"> <li>EDC area</li> <li>M7-M12 Interchange</li> <li>M7 Motorway bridge locations, specific to Great Western Highway, Waste Management Access Road and Woodstock Avenue</li> </ul>	March-June 2025 <b>Moderate-noisy</b>
Road surface work for new and temporary pavement, road and shared user path (SUP) repairs, traffic lane and SUP realignment and haul road construction, kerb, pavement and median removal/construction	Road paving and milling machines, rollers, jackhammers, light and heavy vehicles, water carts, power and hand tools, excavators, graders, rigs, cranes, pumps and vibrators, elevated work platforms, compactors, light towers, compressors, profiler, line marking placement and removal trucks	<ul style="list-style-type: none"> <li>EDC area</li> <li>M7-M12 Interchange</li> <li>M7 Motorway widening area including ramps and adjacent streets</li> </ul>	March-June 2025 <b>Noisy</b>
Establishing work areas including installing fencing and hoarding	Excavators, cranes, power and hand tools, elevated work platforms, light and heavy vehicles, trailers and semi-trailers, water carts, sweepers, rollers, light towers	<ul style="list-style-type: none"> <li>M7 Motorway widening and bridge locations</li> <li>EDC area</li> <li>M7-M12 Interchange</li> </ul>	March-June 2025 <b>Moderate-noisy</b>

OOHW Activities	Typical equipment	Location (subject to additional approval - refer to map on page 4)	Timing and noise impact at nearest receiver
Electronic devices (Intelligent Transport System) relocations and adjustments	Excavator, tippers, light towers, power and hand tools, cable puller, light and heavy vehicles	<ul style="list-style-type: none"> <li>- EDC area</li> <li>- M7-M12 Interchange</li> <li>- M7 Motorway widening area</li> </ul>	Ongoing <b>Quiet-moderate</b>
Bridge work including piling, girder installation, barrier and deck demolition and installation, deck construction, formwork and concrete work, ground stabilisation, scaffold install and removal, launching segments using a hydraulic system, steel fixing, permanent bearings installation, walkway installation and construction water catchment installation.	Excavators, tippers, light and heavy vehicles, graders, lifting and rigging equipment, cranes, pumps and vibrators, elevated work platforms, jackhammers, air compressors, water carts, trailers, power and hand tools, light towers, compactors, generators, hydro demolition equipment, demolition saws, rollers, hydraulic jacks	<ul style="list-style-type: none"> <li>- Existing bridges along the M7 Motorway widening area</li> <li>- New bridges at the Elizabeth Drive and M7 Motorway intersection</li> <li>- M7 Motorway on ramp and off ramp at Elizabeth Drive intersection</li> <li>- EDC area</li> <li>- M7-M12 Interchange</li> <li>- M7 Motorway widening area</li> </ul>	Ongoing <b>Noisy</b>
Retaining wall including strengthening of existing retaining wall, concrete pours, steel fixing and formwork, sandblasting and shotcreting	Excavators, rock hammers, rollers, bulldozers, light and heavy vehicles, power and hand tools, light towers, rigs, cranes, elevated work platforms, concrete trucks, mixers and pumps, concrete sandblast machine	<ul style="list-style-type: none"> <li>- EDC area</li> <li>- M7-M12 Interchange</li> <li>- M7 Motorway bridge locations</li> </ul>	March-June 2025 <b>Noisy</b>
Deliveries and stockpiling within the site compound and project areas	Generators, cranes, lifting equipment, elevated work platforms, portable sheds, water carts, excavators, light and heavy vehicles, light towers, tippers	<ul style="list-style-type: none"> <li>- EDC area</li> <li>- M7-M12 Interchange</li> <li>- M7 Motorway widening area and adjacent site locations</li> </ul>	Ongoing <b>Quiet-moderate</b>
Bridge casting yard including steel assembly, formwork and concrete works	Generators, cranes, lifting equipment, elevated work platforms, power and hand tools, light towers, lifting equipment, light and heavy vehicles	<ul style="list-style-type: none"> <li>- EDC area</li> <li>- M7-M12 Interchange</li> </ul>	March-June 2025 <b>Moderate-noisy</b>
Concrete paving including steel fixing and formwork	Paving machine, light and heavy vehicles, power and hand tools, telehandler, concrete trucks, water carts, light towers, excavators, tippers, profiler	<ul style="list-style-type: none"> <li>- M7 Motorway widening area</li> </ul>	March-June 2025 <b>Moderate-noisy</b>

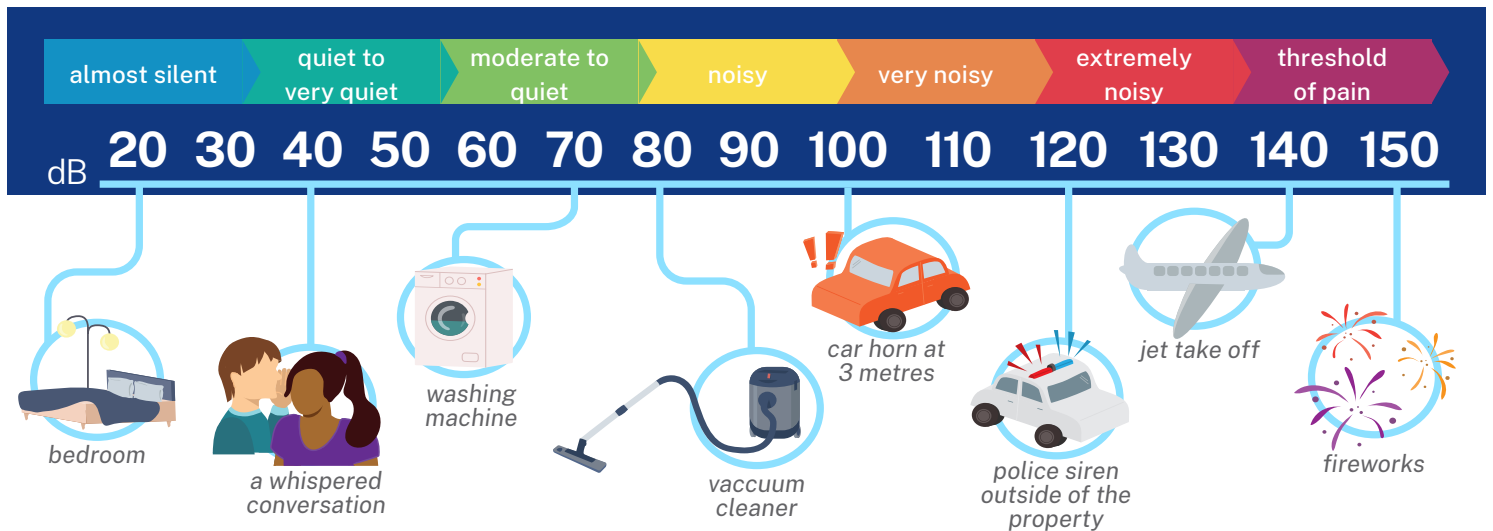


Figure 1 Noise level comparisons: People's perception of noise is strongly influenced by their environment. A noise level that is perceived as loud in one situation may appear quiet in another.



## Noise impacts and mitigation

Work will involve the use of machinery, which can be noisy. We understand that out-of-hours work may disrupt our closest neighbours. We will reduce noise by:

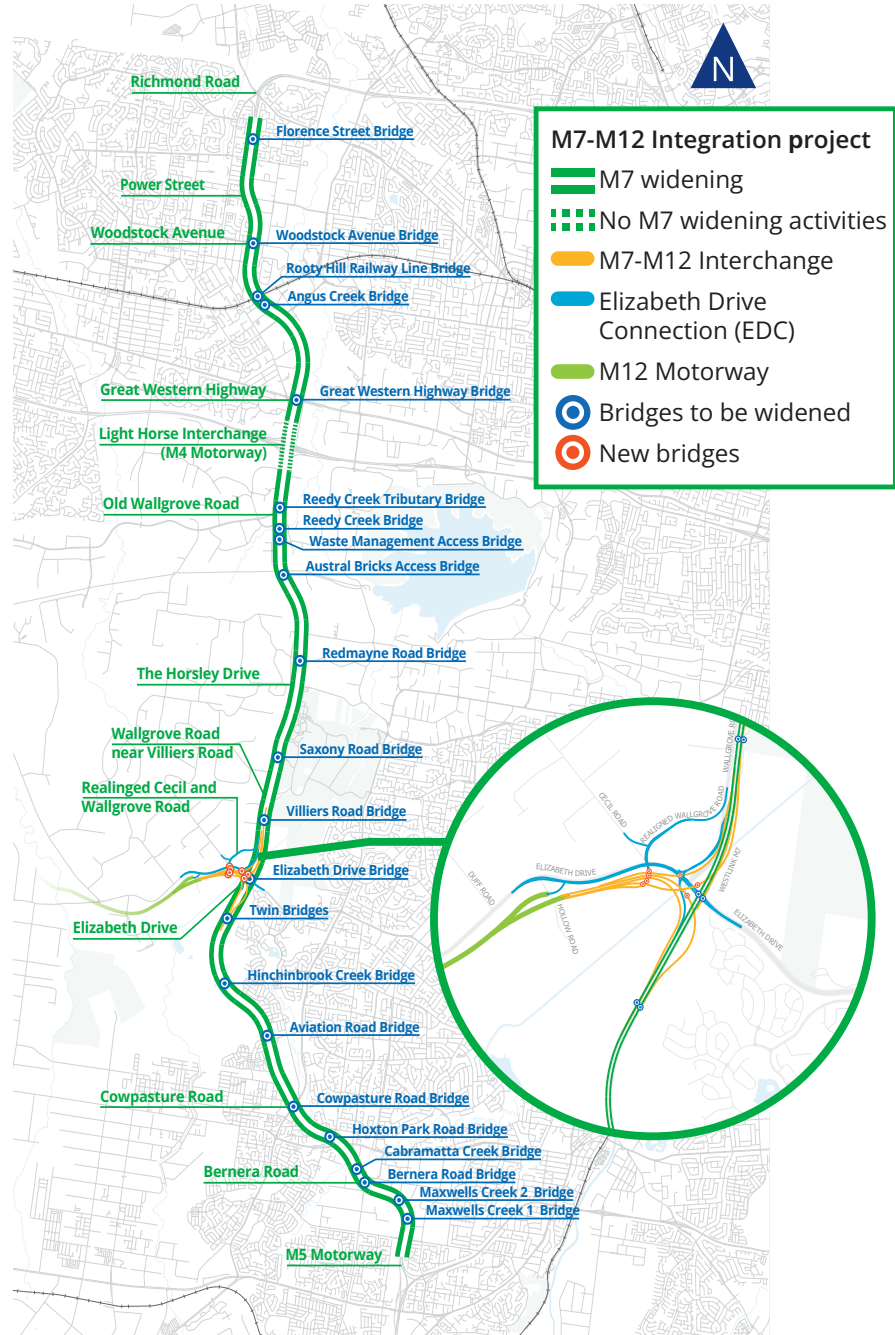
- installing noise blankets on temporary site fences, where possible
- providing breaks from noisy activities (75 dB(A) and above) and activities that have proven to be impactful (e.g. jackhammering, saw cutting), by working three hours on and one hour off in the same location
- using non-tonal reverse beepers
- turning off equipment and vehicles when not in use
- regular monitoring to assess the effectiveness of measures in place. If required, we will put in place extra measures.

Different noise levels are allowed at different times of the day (7am to 6pm), evening (6pm to 10pm) or night (10pm to 7am). If predicted noise levels are higher than the allowable limit, we will apply additional mitigation measures to ensure the works are within the allowable limits.

In the event our noise modelling shows there may be impacts at your property, our community team will contact you directly to discuss respite options.

We will notify eligible residents of any respite arrangements seven days before work, if needed.

## Location of work area



## Contact us



24/7 project infoline **1800 712 712**



[info@m7m12integrationproject.com.au](mailto:info@m7m12integrationproject.com.au)



[www.m7m12integrationproject.com.au](http://www.m7m12integrationproject.com.au)



PO Box 98,  
Kemps Creek 2178



Alternatively, scan the QR code to stay updated



**Interpreter service**

For languages other than English call **131 450**  
Arabic • Greek • Hindi • Mandarin • Vietnamese

طلب خدمة الترجمة الشفهية للغات غير الإنجليزية اتصل  
بالرقم **131 450**

Για υπηρεσίες διερμηνείας σε άλλες γλώσσες εκτός από  
τα Αγγλικά καλέστε το **131 450**

अंग्रेजी के अतिरिक्त अन्य भाषाओं के लिए दुभाषिया सेवा  
**131 450** पर कॉल करें

获取英语以外的其他语言口译协助服务可以致电**131 450**

Để có dịch vụ thông ngôn cho các ngôn ngữ khác  
tiếng Anh, gọi số **131 450**