



Three month out-of-hours work look ahead

M7-M12 Integration Project

April 2024 - June 2024



We acknowledge the Dharug people as the Traditional Custodians of the lands on which we work and pay respects to Elders past and present.

The M7-M12 Integration Project will support future development growth in Western Sydney by improving travel times and congestion. Once complete, the project will provide direct access to commercial and residential hubs, and the new Western Sydney International Airport.

Night work

Night work activities are planned between **6pm and 7am, Monday to Friday morning,** and **6pm Friday to 8am Saturday morning.**

We will not complete noisy work in the same location more than two (2) nights in a row, three (3) nights in a week and ten (10) nights in a month, unless otherwise notified.

Work may occur outside of these hours, subject to additional approval.



Keeping you informed

We are committed to keeping you informed about construction and project activities, as well as any traffic changes.

Visit the project's website for construction updates, an interactive map, current out-of-hours construction activities and additional project information www.m7m12integrationproject.com.au

We will also provide information through email, community updates, face-to-face engagement and community information sessions. If you would like to receive regular email updates on the M7-M12 Integration project, please email info@M7M12integrationproject.com.au.

Planning for future out-of-hours work

Some of our work may occur outside of standard construction hours. We welcome any queries or feedback you have regarding out-of-hours work.

You can help us plan for future night work by letting us know of any important dates and times we should avoid. For example, this may include nights before a major exam. We will do our best to factor these dates into our night work schedule.

If you have any other needs that you would like us to take into consideration, please contact our team to discuss your circumstances.

Out-of-hours work (OOHW) activities

Please note, noise levels and their impacts are subject to the location and distance of the property from the work site.

OOHW Activities	Typical equipment	Location (refer to map on page 4)	Noise impact at nearest receiver	Timing (2024)
Vegetation and tree removal	Mulchers, chainsaws, slashers, excavators, lifting equipment, elevated working platforms, bulldozers, power and hand tools, traffic control, light towers	<ul style="list-style-type: none"> Elizabeth Drive Connection (EDC) area In the centre of the M7 Motorway, along ramps, at intersections and along adjacent streets (subject to approval) 	Noisy	April–June
Barrier and signage installation, maintenance and removal	Cranes, trucks, lifting equipment, heavy vehicles, rattle guns, core drills, vacuum trucks, power and hand tools, traffic control, light towers	<ul style="list-style-type: none"> EDC area M7 Motorway widening area Major intersections, local roads at bridge locations 	Moderate-noisy	April–June
Earthworks	Excavators, road profilers, compactors, rock hammers, rollers, bulldozers, tippers, trucks, heavy vehicles, lifting equipment, power and hand tools, traffic control, light towers	<ul style="list-style-type: none"> EDC area M7 Motorway widening area M7 Bridge locations 	Noisy	April–June
Utility works, including investigation, installation, relocation and outage	Vacuum trucks, cranes, excavators, road saws, lifting equipment, light and heavy vehicles, boring rig and equipment, elevated work platforms, pole grab trucks, compactors, rock hammers, power and hand tools, traffic control, light towers	<ul style="list-style-type: none"> Cecil Road between Elizabeth Drive and Washington Way Tank Road Elizabeth Drive between Duff Road and Windsor Road Wallgrove Road between Elizabeth Drive and Kosovich Place (including intersections) M7 Motorway widening area including bridges, shared user paths, ramps, intersections, adjacent streets and footpaths (subject to approval) 	Moderate-noisy	April–June
Geotechnical investigation, including surveying, potholing, bridge assessment and monitoring	Drill rigs, vacuum trucks, concrete corers, road saws, excavators, lifting equipment, heavy vehicles, power and hand tools, traffic control, light towers, water cart	<ul style="list-style-type: none"> EDC area M7 Motorway widening area including shared user paths, ramps, intersections, adjacent streets and footpaths (subject to approval) 	Moderate-noisy	April–June
Road works, including resurfacing, temporary pavement and haul road construction	Asphalt paving and milling machines, rollers, line marking trucks, jackhammers, heavy vehicles, water carts, power and hand tools, excavators, rattle guns, rigs, cranes, trucks, pumps and vibrators, elevated work platform, vacuum trucks, compactors, traffic control, light towers	<ul style="list-style-type: none"> EDC area M7 Motorway widening area including ramps and adjacent streets (subject to approval) 	Moderate-noisy	April–June

OOHW Activities	Typical equipment	Location (refer to map on page 4)	Noise impact at nearest receiver	Timing (2024)
Retaining wall construction	Excavators, rock hammers, rollers, bulldozers, heavy vehicles, lifting equipment, power and hand tools, concrete trucks, traffic control, light towers, drill rigs	<ul style="list-style-type: none"> - EDC area - M7 bridge locations, specific to Rooty Hill, Waste Management Centre Bridge and Great Western Highway Bridge - Saxony Road, between the existing M7 Motorway bridges 	Noisy	From April
Traffic Control Signal (TCS) works	Cranes, trucks, lifting equipment, heavy vehicles, rattle guns, power tools, core drills, vacuum trucks, power and hand tools, traffic control, road saws, light towers, generators	<ul style="list-style-type: none"> - EDC area 	Moderate-noisy	April-June
Work establishment area	Excavators, cranes, light and heavy vehicles, trucks, trailers and semi-trailers, water carts, sweepers, rollers, light towers	<ul style="list-style-type: none"> - Elizabeth Drive between Duff Road and Windsor Road - Existing M7 Motorway bridges and along the mainline - M7 Motorway compound at the Great Western Highway and M7 Motorway intersection 	Moderate-noisy	April-June
Bridge structure and foundation work including piling, formation and concrete pouring	Excavators, tipplers, light and eavy vehicles, graders, piling rigs, drill rigs, lifting equipment, cranes, trucks, pumps and vibrators, elevated work platform, jackhammers, air compressors, water carts, trailers, power and hand tools, light towers, concrete compactor	<ul style="list-style-type: none"> - Existing bridges along the M7 Motorway widening area and new bridges at the Elizabeth Drive and M7 Motorway intersection 	Moderate-noisy	Ongoing
Use of site compounds for deliveries and stockpiling (subject to approval)	Generators, cranes, lifting equipment, trucks, elevated work platforms, portable sheds, water carts, excavators, heavy vehicles, light towers	<ul style="list-style-type: none"> - Multiple site locations near the M7 Motorway widening and EDC areas 	Quiet-moderate	Ongoing

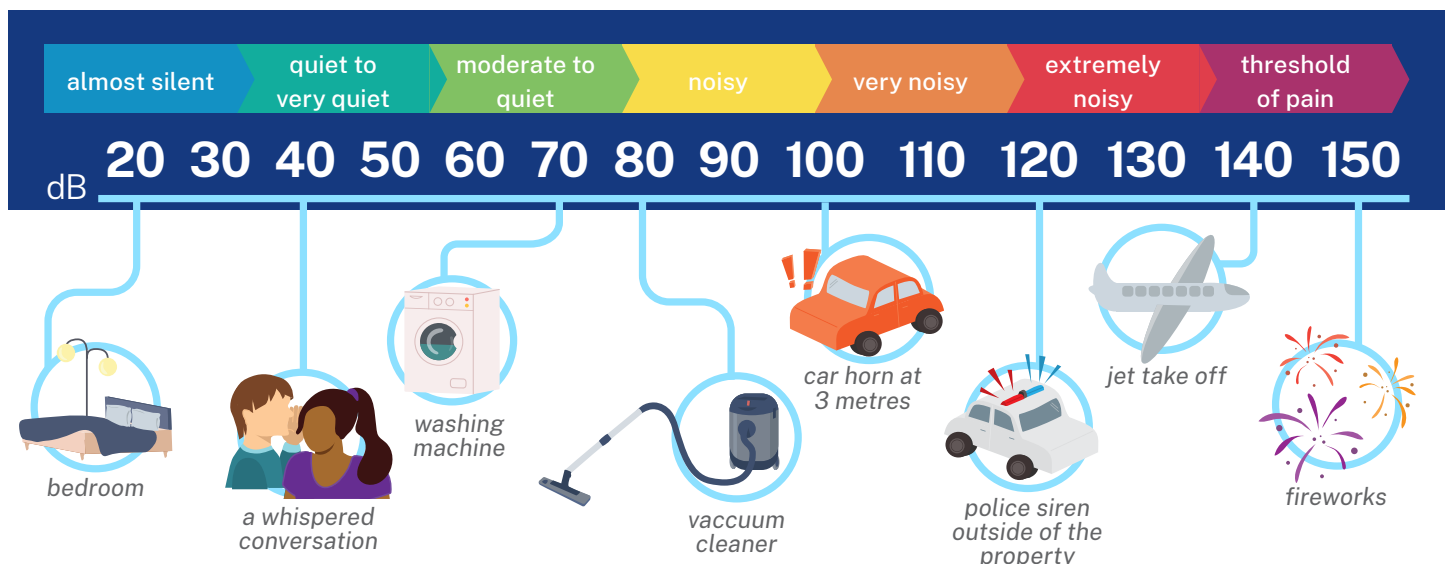


Figure 1 Noise level comparisons: People's perception of noise is strongly influenced by their environment. A noise level that is perceived as loud in one situation may appear quiet in another.

Impacts and mitigation

Noise

Work will involve the use of machinery, which can be noisy. We understand that night work may disrupt our closest neighbours. We will reduce noise by:

- installing noise blankets on temporary site fences, where possible
- providing breaks from noisy activities (75 dB(A) and above) and activities that have proven to be impactful (e.g. jackhammering, saw cutting), by working three (3) hours on and one (1) hour off in the same location
- using non-tonal reverse beepers
- turning off equipment and vehicles when not in use
- regular monitoring to assess the effectiveness of measures in place. If required, we will put in place extra measures.

Different noise levels are allowed at different times of the day (7am to 6pm), evening (6pm to 10pm) or night (10pm to 7am). If predicted noise levels are higher than the allowable limit, we will apply additional mitigation measures. In the event our noise modelling shows there may be impacts at your property, our community team will contact you directly to discuss respite options.

We will notify eligible residents of any respite arrangements seven (7) days before work, if needed.

Traffic

Changes to traffic conditions will be in place around our work areas. These changes include a combination of lane/ramp closures, detours, reduced speed limits and stop-slow.

Traffic control and signage will be in place to assist motorists and pedestrians while we are working.

Access for emergency service vehicles and public transport will be maintained at all times. For the latest traffic updates, you can call 132 701, visit livetraffic.com or download the Live Traffic NSW app.

Contact us



24/7 project infoline **1800 712 712**



info@m7m12integrationproject.com.au



www.m7m12integrationproject.com.au

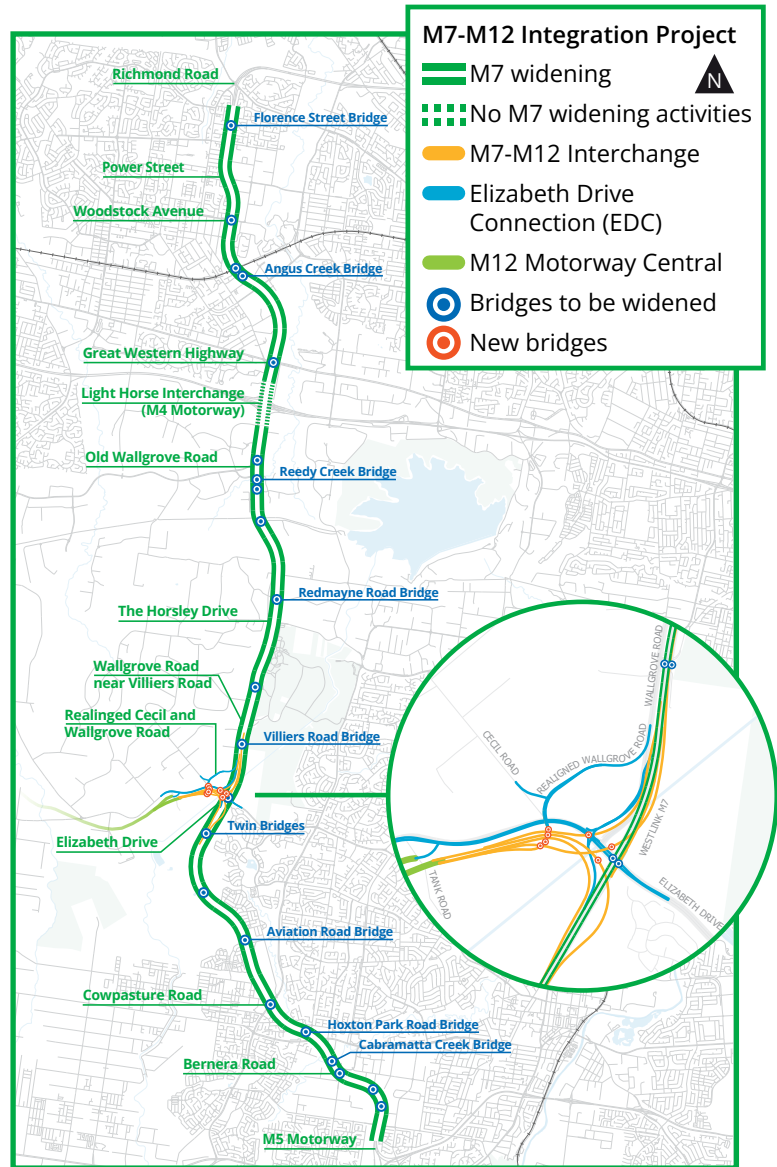


PO Box 302,
Horsley Park NSW 2175



Alternatively, scan the QR code to stay updated

www.transport.nsw.gov.au/privacy-statement#Your_Privacy



Interpreter service

For languages other than English call **131 450**
Arabic • Greek • Hindi • Mandarin • Vietnamese

طلب خدمة الترجمة الشفهية للغات غير الإنجليزية اتصل
بالرقم **131 450**

Για υπηρεσίες διερμηνείας σε άλλες γλώσσες εκτός από
τα Αγγλικά καλέστε το **131 450**

अंग्रेज़ी के अतिरिक्त अन्य भाषाओं के लिए दुभाषिया सेवा
131 450 पर कॉल करें

获取英语以外的其他语言口译协助服务可以致电**131 450**

Để có dịch vụ thông ngôn cho các ngôn ngữ khác
tiếng Anh, gọi số **131 450**