

Community Update

M7-M12 Integration project

April 2024



M7 looking west at the M7-M12 Interchange and EDC

The M7-M12 Integration project will support future development growth in Western Sydney by improving travel times and congestion. Once complete, the project will provide direct access to commercial and residential hubs, and the new Western Sydney International Airport.

Project Update

There has been a lot of progress on the M7-M12 Integration project since construction began in August last year. Traffic lane realignment and safety barrier installation along the M7 Motorway between the M5 Motorway and Richmond Road is completed. Piling for the new M7-M12 interchange bridges and the Villiers Road bridge have started. Construction of the fauna crossing is ongoing along with tree clearing, and building temporary pavement within the M7 median.

Come and meet the project team

We will be participating in Blacktown City Councils Streets Alive event.

Drop-in, say hello and learn more about the M7-M12 Integration project.

When and where

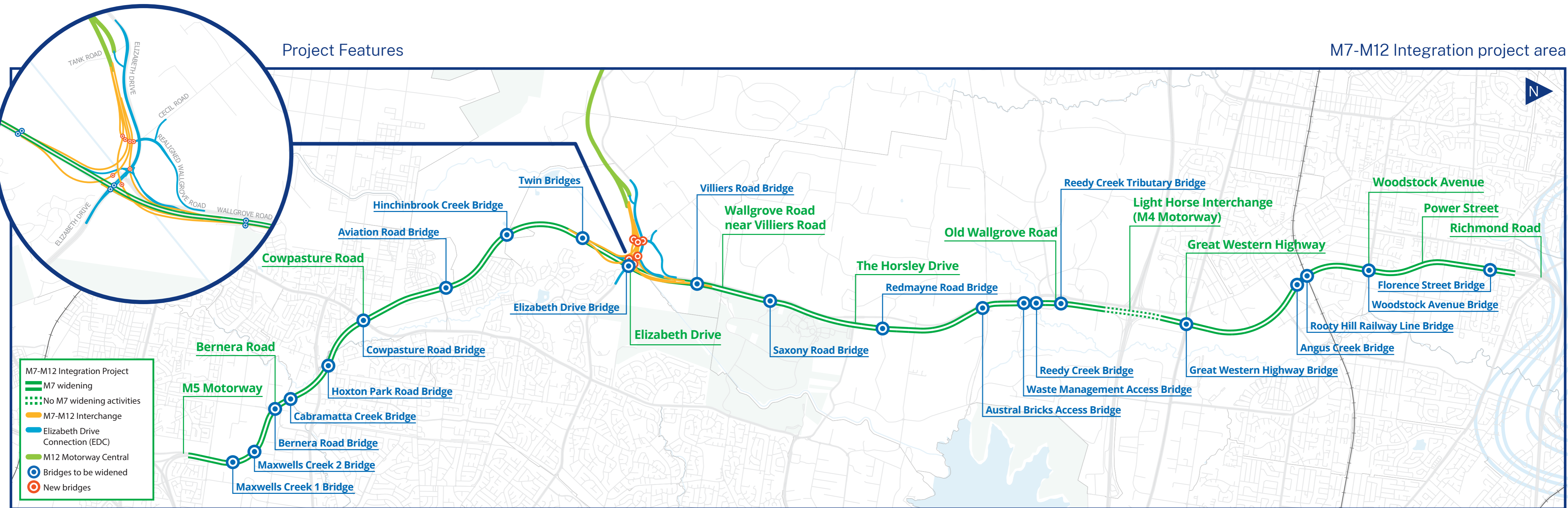
Saturday 25 May
2024, 9am-4pm.

Main Street,
Campbell Street
and Flushcombe
Road, Blacktown

No need to RSVP,
simply drop in
anytime!



Project Features



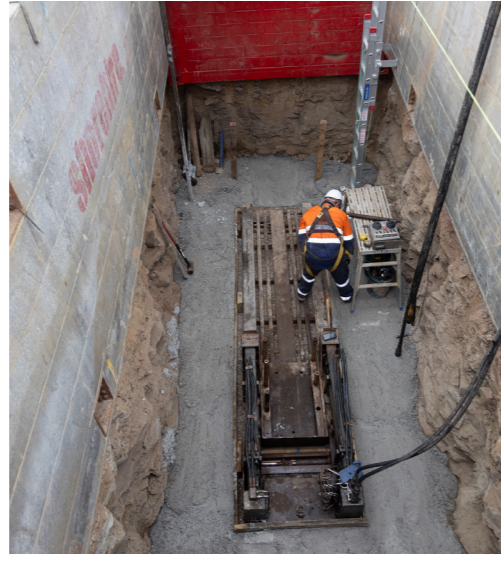
Utilities

Approximately 65 per cent of all utility installation and relocation work has been completed.

To date, the project team have installed:

- just over half of the new high pressure gas main
- 1.56 kilometres of water main out of a total 3.7 kilometres
- 21 water hydrants out of 47
- 9 water valves out of 17
- approximately 1.35 kilometres of electrical cables out of a total 3.63 kilometres
- 11 power poles out of 48.

All new telecommunications maintenance holes, pits and cables have been successfully installed for the project.



Geotechnical investigations

→ 189 of 339 boreholes have been completed along the project area.



M7 Motorway

→ All safety barriers have been installed along the M7 Motorway (between the M5 Motorway and Richmond Road)

→ It has taken site crews about 30 night shifts to install approximately 46 kilometres of barriers along the M7 Motorway in both directions.



Elizabeth Drive Connection (EDC) / M12 Motorway

→ To date approximately 26,500 cubic metres of topsoil has been removed within work areas

→ During earthworks, approximately 50,000 cubic metres of material has been moved

→ Just over 91,000 cubic metres of material has been placed across the work areas

→ Over 41,000 cubic metres of material has been imported.

Women in Construction

The Women in Construction Pre-Employment Program recruitment drive was a great success!

In January, we welcomed 30 dynamic women to our pre-employment program information and assessment day. There were eleven superstars selected for our pre-employment program which commenced in mid-February.

For those who successfully completed the program, were then offered a civil construction apprenticeship that will redefine their future!

The pre-employment program attracted 400 quality applicants from Western Sydney. These go-getters were encouraged by our flexible 8.45am starts which is revolutionary for women looking to build careers in construction whilst juggling a work/life balance.



Scan the QR code to hear from some of the participants.



Stef Nutt, People Director at the M7-M12 Integration project, shared:

“It’s encouraging to see so many women looking to start a career in construction. The high number of quality applications shows that there is a lot of interest, especially as a result of our flexible 8:45am starts – this is an industry game changer.”



Unleash your engineering skills!



M7-M12 Integration Project Bridge Competition

\$2,000 in prizes to be won!

To coincide with construction of the M7-M12 Integration Project, we want you to build the strongest bridge using only spaghetti and glue!

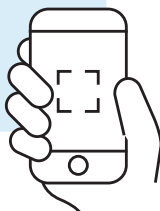
Open to students in Years 5 to 12

Bridge testing day - Friday 9 August 2024. To register visit telg.com.au/nswbridgecomp

Keep informed

Stay up to date on the M7-M12 Integration project by visiting our website www.m7m12integrationproject.com.au

On our website, you can subscribe to receive regular project updates, access information on construction processes, safety measures and environmental considerations, and provide feedback and ideas directly to the project team.



To subscribe to the email distribution list for this project, please contact info@m7m12integrationproject.com.au

Giving back to our community

At the end of 2023, the project team organised a toy drive for local organisations – Bonnie’s Support Services, Sydwest and Muru Mittigar.

The project team and subcontractors donated two full vans of new toys to the organisations. These toys were given to families and children living in crisis.



A tiny addition to the M7-M12 Integration project team

The M7-M12 Integration project has welcomed a new member to our team – the Tiny Surveyor.

This new addition is a line marking robot, working to automatically and accurately mark out road lines along the M7 Motorway.

The Tiny Surveyor completes line marking faster than on foot and is a great tool for keeping our surveyors away from live traffic and boosting safety on site.

Contact us



24/7 project infoline **1800 712 712**



info@m7m12integrationproject.com.au



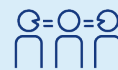
www.m7m12integrationproject.com.au



PO Box 98, Kemp's Creek NSW 2178



Alternatively, scan the QR code to stay updated



Interpreter service

For languages other than English call **131 450**
Arabic • Greek • Hindi • Mandarin • Vietnamese

لطلب خدمة الترجمة الشفهية للغات غير الإنجليزية اتصل
بالرقم 131 450

Για υπηρεσίες διερμηνείας σε άλλες γλώσσες εκτός από
τα Αγγλικά καλέστε το **131 450**

अंग्रेजी के अतिरिक्त अन्य भाषाओं के लिए दुभाषिया सेवा
131 450 पर कॉल करें

获取英语以外的其他语言口译协助服务可以致电**131 450**

Để có dịch vụ thông ngôn cho các ngôn ngữ khác tiếng
Anh, gọi số **131 450**