

# Warringah Freeway weekend work and temporary traffic changes, Cammeray and Naremburn

Warringah Freeway Upgrade  
September 2025



Transport for NSW acknowledges the Cammeraygal people of the Eora nation as the Traditional Custodians of the lands on which we work and pays respect to Elders past and present.

We are simplifying the Warringah Freeway, making it safer and easier to use, and more efficient and reliable for the benefit of all road users, including public transport users.

In October 2025, we will be carrying out day and night work over three weekends on the Warringah Freeway between Merrenburn Avenue, Naremburn and Falcon Street, Neutral Bay.

This will speed up the work program and reduce overall impact to the surrounding community. Please refer to **Map 1 and Table 1** below for more information about the work areas and work activities.



## Where

Warringah Freeway between Merrenburn Avenue, Naremburn and Falcon Street, Neutral Bay.



## When

10pm Friday 3 October to 4:30am  
Tuesday 7 October 2025.

10pm Friday 10 October to 6pm  
Saturday 11 October 2025.

10pm Friday 17 October to 5am  
Monday 20 October 2025.

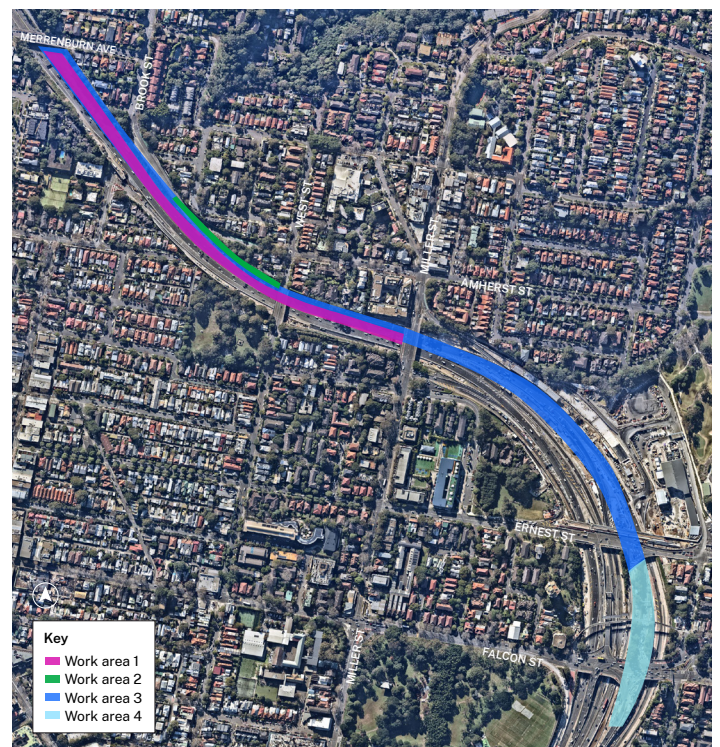


## Please note

A full southbound closure of all lanes between Gore Hill Freeway and Falcon Street will be in place from:





- 10:30pm Friday 10 October to 6am Saturday 11 October 2025
- 10:30pm Friday 17 October to 6am Saturday 18 October 2025

For more information on temporary weekend traffic changes, please see **Table 1 and Map 2** overleaf.



Map 1: Weekend work areas from 10pm Friday 3 October 2025 to 5am Monday 20 October 2025.



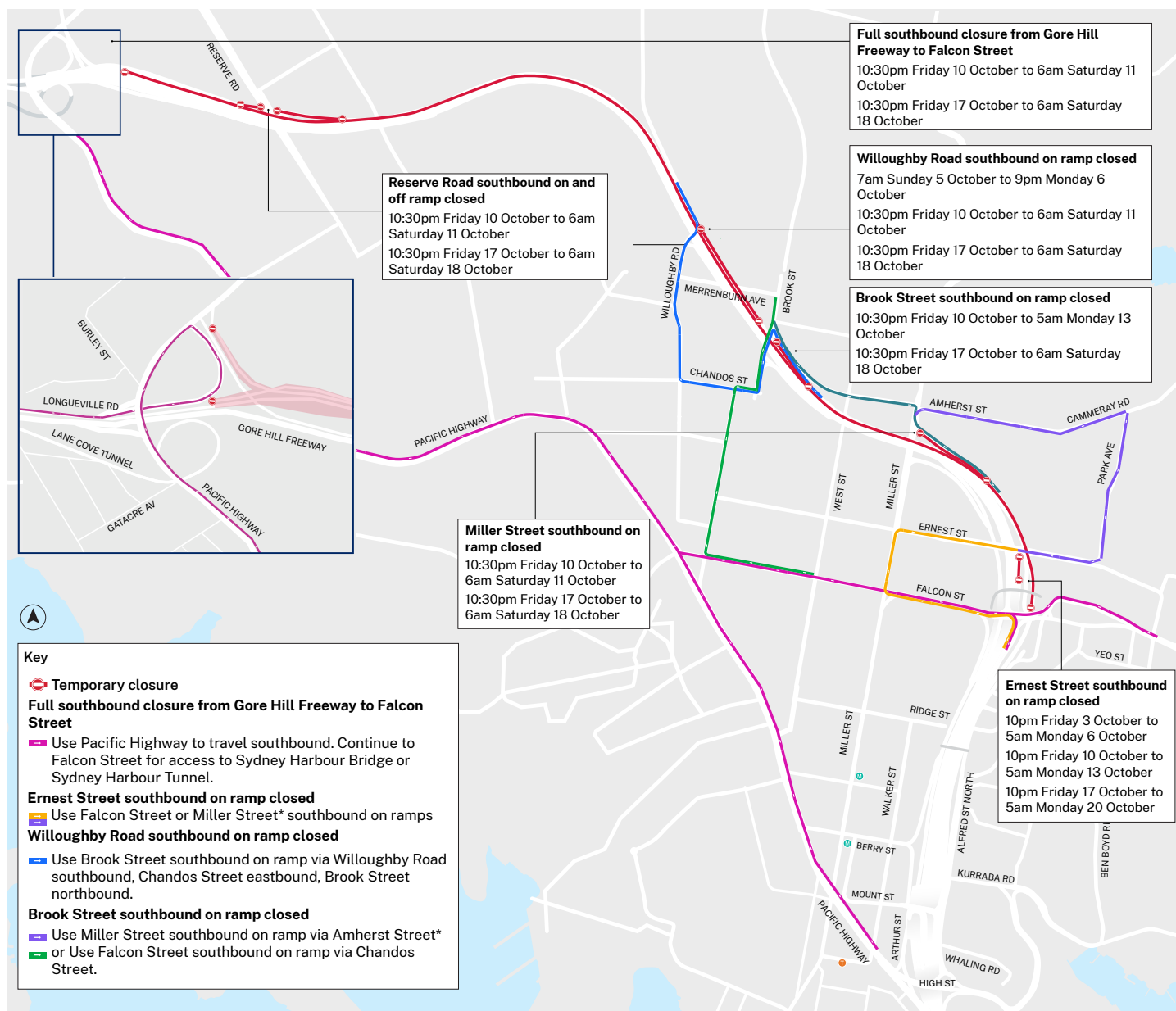
Area (see map 1)	Work activities	Dates / times	Advice for motorists
 Freeway southbound inner lanes and reversible lanes between Ernest Street and Falcon Street	Asphalting, excavating, saw cutting and road repaving.	10pm Friday 3 October to 5am Monday 6 October <b>and</b> 10pm Friday 10 October to 6pm Saturday 11 October <b>and</b> 10pm Friday 17 October to 5am Monday 20 October.	<ul style="list-style-type: none"> <li>• <b>Ernest Street southbound on ramp closed</b> Use Miller Street southbound on ramp* <b>or</b> Falcon Street southbound on ramp</li> <li>• <b>Northbound reversible inner lanes closed.</b> Use the northbound outer lanes.</li> <li>• <b>Southbound inner lane reductions.</b> Southbound access is maintained. Please slow down and expect delays.</li> </ul>
 Southbound lanes between Merrenburn Avenue and Miller Street	Asphalting, excavating, saw cutting, pouring concrete, road repaving, line marking and installing signage.	10pm Saturday 4 October to 4:30am Tuesday 7 October.	<ul style="list-style-type: none"> <li>• <b>Willoughby Road southbound on ramp closed, 7am Sunday 5 October to 9pm Monday 6 October</b> Use Brook Street southbound on ramp via Willoughby Rd southbound, Chandos St eastbound, Brook St northbound, <b>or</b> Willoughby Rd southbound, Merrenburn Ave eastbound, Brook St southbound.</li> <li>• <b>Warringah Freeway southbound lane reductions between Merrenburn Avenue and Miller Street.</b> Southbound access is maintained. Please slow down and expect delays.</li> </ul>
 Southbound lanes between Brook Street and West Street	Asphalting, excavating, saw cutting, pouring concrete, installing drainage, road repaving, line marking, installing barriers and installing signage.	10pm Friday 10 October to 5am Monday 13 October.	<ul style="list-style-type: none"> <li>• <b>Brook Street southbound on ramp closed from 10pm Friday 10 October to 5am Monday 13 October 2025.</b> Use Miller Street southbound on ramp via Amherst Street* <b>or</b> use Falcon Street southbound on ramp via Chandos Street.</li> <li>• <b>Warringah Freeway southbound lane reductions between Brook Street and West Street</b> Southbound access is maintained. Please slow down and expect delays.</li> </ul>
 Southbound freeway lanes between Merrenburn Avenue and Ernest Street	Asphalting, excavating, saw cutting, pouring concrete, piling, road repaving, line marking, installing barriers and installing signage.	10:30pm Friday 10 October to 6am Saturday 11 October <b>and</b> 10:30pm Friday 17 October to 6am Saturday 18 October.	<ul style="list-style-type: none"> <li>• <b>Full southbound closure of all lanes and on ramps between Gore Hill Freeway and Falcon Street.</b> Use Pacific Highway to travel southbound. Continue to Falcon Street for access to the Sydney Harbour Bridge or the Sydney Harbour Tunnel.</li> </ul>

\*excluding 10:30pm Friday 10 October to 6am Saturday 11 October and 10:30pm Friday 17 October to 6am Saturday 18 October.

Table 1: Work areas and associated work activities.

## Temporary traffic changes

We will set up temporary lane and ramp closures along the freeway during the weekend work. Please plan ahead and allow extra travel time and follow the direction of traffic control. Please see the map below and visit [LiveTraffic.com](https://www.livetraffic.com) for the latest traffic updates.



\*excluding 10:30pm Friday 10 October to 6am Saturday 11 October and 10:30pm Friday 17 October to 6am Saturday 18 October.

Map 2: Weekend work traffic changes.

## Scan & Plan

You can also scan the QR code to view our dedicated weekend work page and stay up to date with the latest information about our weekend work and temporary traffic changes. We will update this page regularly as we progress with any changes to the planned work.

During the weekends in October 2025, multiple ramp and lane closures will be in place. Motorists are advised to expect delays, plan ahead and allow additional travel time.



## Temporary pedestrian and cyclist changes

### Falcon Street bridge

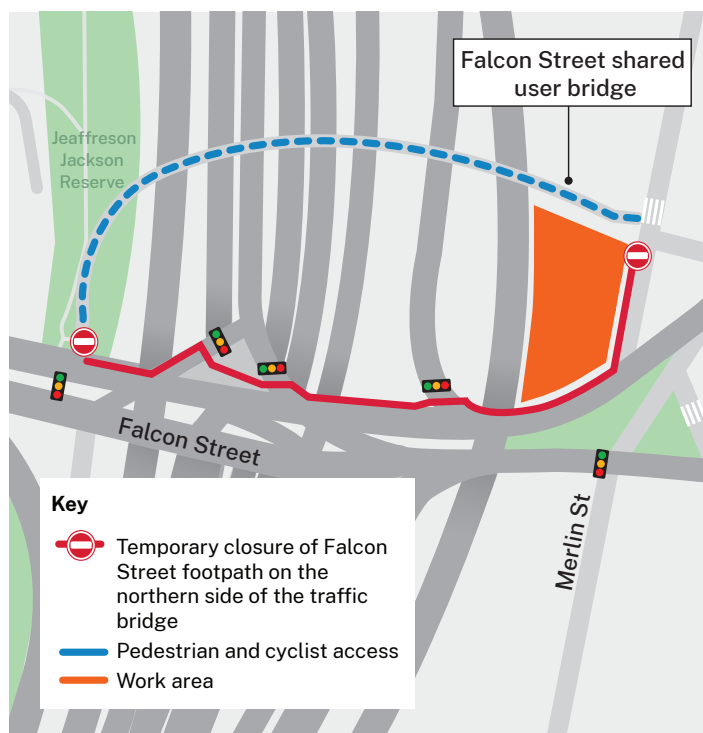
From **7am Friday 10 October 2025**, we will be working on the western side of Merlin Street between Falcon Street and the Falcon Street shared user bridge.

To safely access the area, we will need to temporarily close the footpath on the northern side of Falcon Street bridge. The Falcon Street shared user bridge will remain open.

Work will include:

- demolishing an old bridge pier
- building a new retaining wall and footpath.

The work is expected to take three months to complete, with the footpath expected to reopen in early 2026.



Map 3: Temporary pedestrian and cyclist detour.

## Managing our impacts

Some of the work activities will require the use of machinery that generates noise, light, and vibration. We implement extensive controls to ensure any noise impacts are mitigated as much as possible.

To minimise the impact of this work we will:

- turn off machinery when not in use
- use acoustic blankets to minimise noise, where practicable
- direct temporary lighting down and away from properties
- fit equipment with devices to minimise noise, particularly non-tonal reversing beepers.

Our standard Environmental Protection Licence (EPL) conditions permit us to work up to three nights per week and up to ten nights per month, with no more than two consecutive nights of high noise work. We have been granted a temporarily altered EPL in instances where extended work shifts can provide benefits to the community, such as substantially reducing the duration of time it takes to complete a work activity, or when the work cannot be completed during single night work shifts. The temporarily altered EPL condition allows us to work on consecutive noisy nights during extended weekend shifts usually from 10pm Friday until 4.30am Monday. The altered condition will continue to allow work on no more than ten nights per month in each work location. During the extended work, we will make productive use of the lower traffic volumes to set up road closures and complete as much work as we can over the weekend, expediting the overall project work schedule.

If you have any comments you would like to provide on the planned work activities, or if you have personal circumstances you need to discuss with us, we would like to hear from you. You can contact us at **1800 931 189** or by emailing [whtbl@transport.nsw.gov.au](mailto:whtbl@transport.nsw.gov.au).

## Contact us



Project Infoline **1800 931 189**



[whtbl@transport.nsw.gov.au](mailto:whtbl@transport.nsw.gov.au)



Visit the online portal at  
[nswroads.work/wfuportal](https://nswroads.work/wfuportal)



**For the latest traffic updates:**

Call 132 701, visit [livetraffic.com](https://livetraffic.com) or download the app Live Traffic NSW



### Interpreter service

For languages other than English call **131 450**  
Mandarin • Cantonese • Japanese • Korean  
获取英语以外的其他语言口译协助服务可以致电**131 450**  
獲取英語以外的其他語言傳譯協助服務可以致電**131 450**  
英語以外の言語の通訳サービスは**131 450**までお電話ください。  
영어 외 기타 언어 통역 서비스는 **131 450**번으로 전화하세요

[www.transport.nsw.gov.au/privacy-statement#Your\\_Privacy](https://www.transport.nsw.gov.au/privacy-statement#Your_Privacy)