

Construction notification

February 2024

## Out of hour works – Lamont Street

Construction activity is ongoing at the Powerhouse Parramatta project site. Work is progressing and activity is required on Lamont Street, at the intersection of Wilde Avenue in Parramatta, to enable electrical services identification work to occur.

### Key dates

From Sunday 18 February to Friday 23 February 2024

### Location

Lamont Street, Parramatta

### Out of hours work in Lamont Street

From the rescheduled dates of **Sunday 18 February to Friday 23 February**, work will now take place in Lamont Street to identify high voltage conduits in the ground.

The identification of these services is required to allow for future electrical connection works associated with Powerhouse Parramatta, which will be separately completed by Endeavour Energy in early March.

Due to work adjacent to a main road, and the required temporary closure of one lane on Wilde Avenue, these works will be completed outside of standard construction hours, between **7.30pm and 5am**.

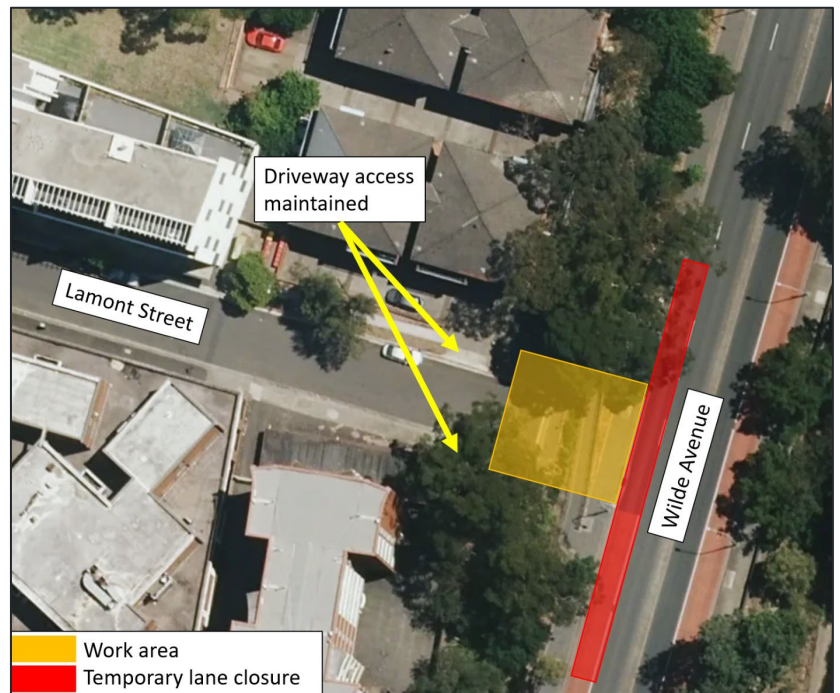
Activity each night will involve saw cutting, use of an excavator to remove concrete and vacuum truck works to expose services in the ground. The exposed areas will then be covered by road plates in preparation for future connection works.

Endeavour Energy will separately notify any stakeholders that may be impacted by any potential power outages.

### Traffic management

Pedestrian and vehicle access around the work area will be maintained at all times.

Traffic control will be in place to manage the temporary closure of one lane on Wilde Avenue throughout each shift.



## Health and safety

All effort will be made to minimise noisy activities in Lamont Street, with a focus on completing noisier activities as early in each shift as possible.

Strict environmental and planning controls are in place to manage noise, dust and vibration.

## Construction hours

These out of hours work will take place between 7:30pm and 5am for approximately 1 week.




All other construction activities will be carried out during the newly approved construction hours (see Planning Portal Powerhouse Parramatta modification 2 / SSD-10416-Mod-2):

- Monday to Friday, 7am to 6pm
- Saturday, 8am to 5pm.

## More information

We are committed to keeping you informed and regular updates will be provided.

Contact us for construction related questions, feedback or complaints:

 1800 574 931  [powerhouse@lendlease.com](mailto:powerhouse@lendlease.com)  [insw.com/powerhouseparramatta](http://insw.com/powerhouseparramatta)

Scan the QR code to receive the latest project updates



If you need an interpreter, please call TIS National on 131 450 and ask them to call Infrastructure NSW on 1800 931 109. Our business hours are 8am – 5pm.