

# Gold Coast Light Rail Stage 3

## Broadbeach to Burleigh Heads

GoldlinQ  
Gold Coast Light Rail

This render has been developed for illustrative purposes only and not for construction.

**Factsheet** | Nobby Beach urban revitalisation

# Nobby Beach urban revitalisation

Gold Coast Light Rail Stage 3 (GCLR3) provides the opportunity to support the renewal of neighbourhoods surrounding new light rail stations, while improving access for the community and visitors.

The urban revitalisation at Nobby Beach will create an improved public space that serves as a gathering place for events, and as a vibrant social space for residents and businesses.

Feedback provided as part of community consultation undertaken by the City of Gold Coast in 2018, 2019 and 2020 was considered during the detailed design phase for the Nobby Beach precinct. We're pleased to share the precinct designs which are now in their final stages.

This factsheet outlines the key features and improvements which will be delivered to Nobby Beach as part of GCLR3.

In response to community feedback, the precinct has been designed to consider key urban design concept options regarding compatibility with light rail design, impacts on traffic movement, safety, pedestrian access, parking, public space, public art, urban continuity and business continuity.

Over the coming weeks, the project team will be able to share a 360-degree view of the precinct at [gclr3.com.au](http://gclr3.com.au).

## Key features

- a safe and accessible station
- improved connectivity with new pedestrian and cycling facilities
- a dedicated piazza area designed to be a shared-use zone for events and street performers
- additional landscaping and seating
- road network upgrades in the area.

## About GCLR3

Gold Coast Light Rail Stage 3 (GCLR3) is a 6.7 kilometre extension of the light rail network from Broadbeach to Burleigh Heads and is funded by the Queensland and Australian governments in partnership with City of Gold Coast.



Australian Government

CITY OF  
**GOLD COAST**

GoldlinQ  
Gold Coast Light Rail



Queensland Government



Precinct features and layout

Connectivity

Improved pedestrian and cyclist connectivity around the broader Nobby Beach precinct, and the new Nobby Beach Light Rail station.

Improved cyclist amenities with the inclusion of a covered bike parking facility.

Nobby Beach precinct

Landscaping and open space

Improved streetscape, with a shared zone for a pedestrian plaza and event space, with some short-term parking bays retained.

Increased footpath width and outdoor dining opportunity for local businesses.

Increased vegetation with the planting of new trees and garden beds with shade and seating opportunities, and retention of the mature Poinciana.

Enhanced features such as shade, seating walls, bespoke seating, pavement, feature lighting, and drainage.

Safety

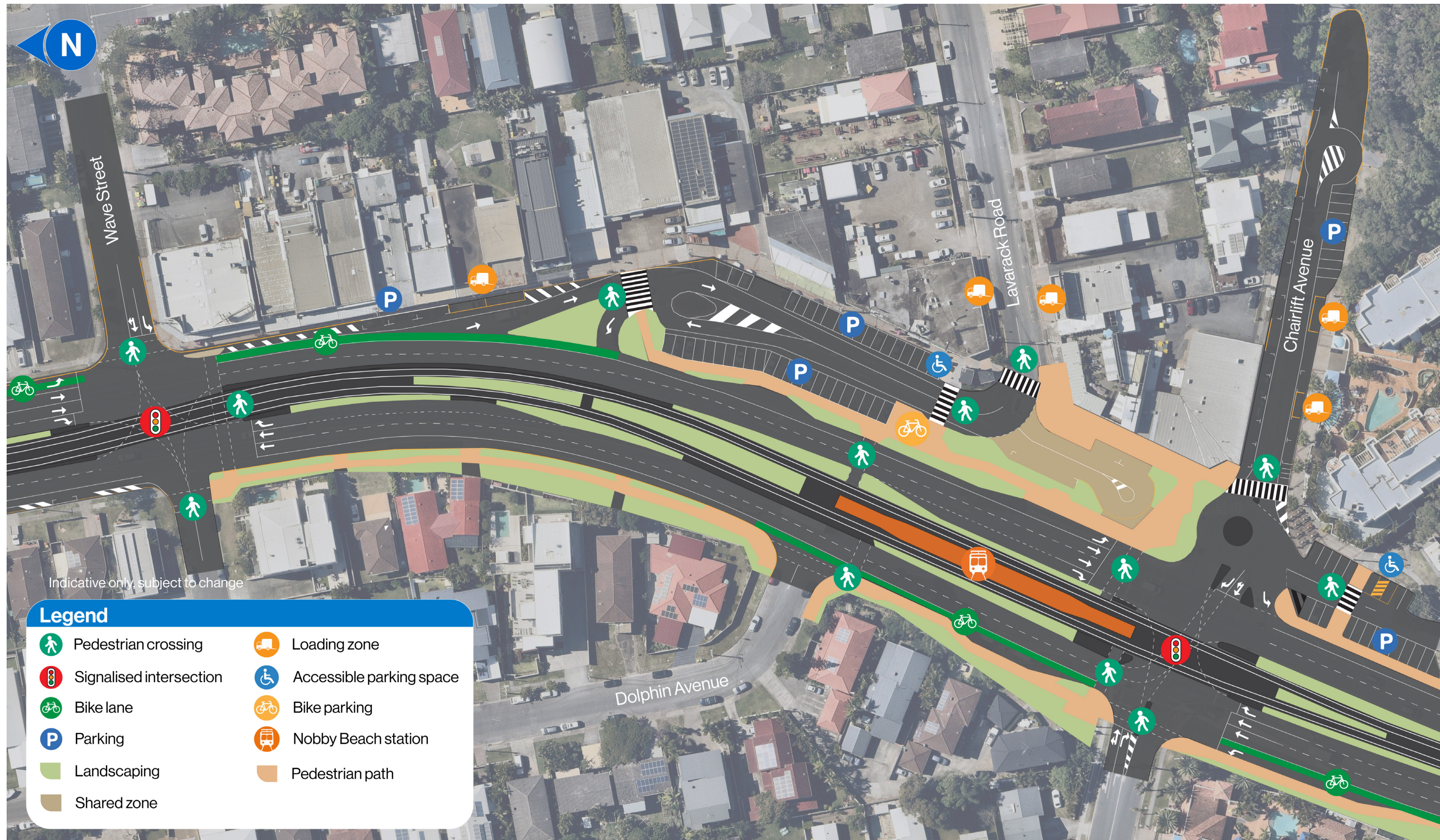
Safety upgrades to the road network including signalised crossings.

Designated pedestrian crossings within the Nobby Beach precinct

Accessibility

Nobby Beach station will be accessible via ramps to provide improved access for passengers using mobility aids (wheelchairs, scooters or motorised vehicles), parents with prams and elderly people. Passenger information displays list the next services for each platform and the expected arrival time.

Passengers will be able to access the station from nearby pedestrian crossings.





## Project Timeline

- ✓ **2018**
  - Initial community engagement for GCLR3 and Nobby Beach urban design
- ✓ **2019**
  - Draft concept design developed to revitalise Nobby Beach
  - Nobby Beach Street Fiesta engagement period
- ✓ **2020**
  - GCLR3 reference design phase / COVID-19
- ✓ **2021**
  - Project tender phase
- ✓ **2022**
  - Project contract award
- ✓ **2022 to 2023**
  - Detailed underground designs and major construction commences
- ✓ **Mid-2023**
  - Nobby Beach initial utility relocation works commences
- **Early 2024**
  - Final designs released
- **2024 to 2025**
  - Nobby Beach revitalisation construction scheduled

## Response to community feedback

### Local traffic impacts

The final designs have been considered in conjunction with local traffic.

The closure of the roundabout movement at Chairlift Avenue and Gold Coast Highway Service Road prevents northbound traffic from 'rat running' through Lavarack Road.

Southbound traffic into the Nobby Beach precinct can utilise the new turning area to exit the precinct back onto the Gold Coast Highway.

### Parking

Consideration has been given to the mix of parking through the Nobby Beach precinct, with a mix of 1/4P, 2P, 3P and Loading Zone bays.

Nobby Beach will become a safer, more accessible and connected precinct, with increased active travel routes.

### Future development

GCLR3 has the potential to offer significant neighbourhood renewal benefits while improving access for the community and visitors. To ensure these benefits are realised, City of Gold Coast prepared a Neighbourhood Framework local planning process for the Broadbeach to Burleigh Heads corridor.

The local planning process guides planning activities and growth in these areas while maintaining the lifestyle, amenity and coastal character values of these neighbourhoods.

For more information, visit [cityofgoldcoast.com.au/nfbb](https://cityofgoldcoast.com.au/nfbb)

## Construction updates

Further project updates will continue to be provided throughout construction. Visit our 'Constructing Nobby Beach' page or register at [gclr3.com.au](https://gclr3.com.au) to receive electronic updates.



**For more  
information**



Visit: [www.gclr3.com.au](https://www.gclr3.com.au)

Email: [contact@gclr3.com.au](mailto:contact@gclr3.com.au)

Phone: 1800 312 600\*

\*Free call anywhere in Australia. Call charges apply from mobiles