

Four month out-of-hours work look ahead

M7-M12 Integration Project

July - October 2024



We acknowledge the Dharug people as the Traditional Custodians of the lands on which we work and pay respects to Elders past and present.

The M7-M12 Integration Project will support future development growth in Western Sydney by improving travel times and congestion. Once complete, the project will provide direct access to commercial and residential hubs, and the new Western Sydney International Airport.

Night work

Night work activities are planned between **6pm** and **7am, Monday to Friday morning**, and **6pm Friday to 8am Saturday morning**.

We will not complete noisy work in the same location more than two (2) nights in a row, three (3) nights in a week and ten (10) nights in a month, unless otherwise notified.

Work may occur outside of these hours, subject to additional approval.

Planning for future out-of-hours work

Some of our work may occur outside of standard construction hours. We welcome any queries or feedback you have regarding out-of-hours work.

You can help us plan for future night work by letting us know of any important dates and times we should avoid. For example, this may include nights before a major exam. We will do our best to

factor these dates into our night work schedule. If you have any other needs that you would like us to take into consideration, please contact our Community Relations Team to discuss your circumstances.

Keeping you informed

Changes to traffic conditions will be in place around our work areas. These changes include a combination of lane and ramp closures, detours, reduced speed limits and stop-slow.

Traffic control and signage will be in place to assist motorists and pedestrians while we are working.

Access for emergency service vehicles and public transport will be maintained at all times.

Plan your trip by visiting livetraffic.com or the project website.

Stay connected!

Keep up-to-date with the latest project news. Subscribe via our website

www.m7m12integrationproject.com.au



Out-of-hours work (OOHW) activities

Please note, noise levels and their impacts are subject to the location and distance of the property from the work site.

OOHW Activities	Typical equipment	Location (subject to additional approval - refer to map on page 4)	Noise impact at nearest receiver	Timing (2024)
Vegetation and tree removal	Chainsaws, slashers, excavators, lifting equipment, elevated working platforms, bulldozers, power and hand tools, light towers	<ul style="list-style-type: none"> Elizabeth Drive Connection (EDC) area In the centre of the M7 Motorway, along ramps, at intersections and along adjacent streets 	Moderate-noisy	July - October
Barrier and signage installation, maintenance and removal	Cranes, trucks, lifting equipment, heavy vehicles, vacuum trucks, power and hand tools, light towers	<ul style="list-style-type: none"> EDC area M7 Motorway widening area, major intersections, local roads at bridge locations 	Moderate-noisy	July - October
Earthworks	Excavators, profilers, compactors, rock hammers, rollers, bulldozers, trucks, heavy vehicles, lifting equipment, power and hand tools, light towers	<ul style="list-style-type: none"> EDC area M7 Motorway widening area M7 bridge locations 	Noisy	July - October
Utility works, including investigation, installation, relocation	Trucks, cranes, excavators, road saws, light and heavy vehicles, rigs, elevated work platforms, pole grab trucks, compactors, rock hammers, power and hand tools, light towers	<ul style="list-style-type: none"> EDC area M7 Motorway widening area including bridges, shared user paths, ramps, intersections, adjacent streets and footpaths 	Moderate-noisy	July - October
Geotechnical investigation, including surveying, potholing, bridge assessment and monitoring	Rigs, vacuum trucks, concrete corers, drill, road saws, excavators, lifting equipment, heavy vehicles, power and hand tools, light towers, water cart	<ul style="list-style-type: none"> EDC area M7 Motorway widening area including shared user paths, ramps, intersections, adjacent streets and footpaths 	Moderate-noisy	July - October
Retaining wall including strengthening of existing retaining wall	Excavators, rock hammers, rollers, bulldozers, heavy vehicles, power and hand tools, trucks, light towers, rigs, cranes, elevated work platforms and mixers	<ul style="list-style-type: none"> EDC area M7 Motorway bridge locations 	Noisy	July - October
Road works including resurfacing, temporary pavement and haul road construction	Road paver and milling machines, rollers, trucks, jackhammers, heavy vehicles, water carts, power and hand tools, excavators, graders, rigs, cranes, pumps and vibrators, elevated work platform, compactors, light towers, compressors, profiler	<ul style="list-style-type: none"> EDC area M7 Motorway widening area including ramps and adjacent streets 	Noisy	July - October
Traffic Control Signal (TCS) work	Cranes, trucks, lifting equipment, heavy vehicles, rattle guns, core drills, vacuum trucks, power and hand tools, traffic control, road saws, light towers, generators	<ul style="list-style-type: none"> EDC area M7 Motorway bridge locations, specific to Great Western Highway, Waste Management Access Road and Woodstock Avenue 	Moderate-noisy	July - October
Establishing work areas including installing fencing and hoarding	Excavators, cranes, rattle gun, elevated work platform, light and heavy vehicles, trucks, trailers and semi-trailers, water carts, sweepers, rollers, light towers	<ul style="list-style-type: none"> Elizabeth Drive between Duff Road and Windsor Road Existing M7 Motorway bridges M7 Motorway compound at the intersection of Woodstock Avenue and the M7 Motorway 	Quiet-moderate	July - October

OOHW Activities	Typical equipment	Location (subject to additional approval - refer to map on page 4)	Noise impact at nearest receiver	Timing (2024)
Bridge foundation work including piling, formation and concrete pouring	Excavators, tippers, light and heavy vehicles, graders, rigs, lifting equipment, cranes, trucks, pumps and vibrators, elevated work platform, jackhammers, air compressors, water carts, trailers, power and hand tools, light towers, compactors, generators	<ul style="list-style-type: none"> Existing bridges along the M7 Motorway widening area New bridges at the Elizabeth Drive and M7 Motorway intersection M7 Motorway on ramp and off ramp at Elizabeth Drive intersection 	Moderate-noisy	Ongoing
Deliveries and stockpiling within the site compound and project areas	Generators, cranes, lifting equipment, trucks, elevated work platforms, portable sheds, water carts, excavators, heavy vehicles, light towers	<ul style="list-style-type: none"> Multiple site locations near the M7 Motorway widening area New bridges at the Elizabeth Drive 	Quiet-moderate	Ongoing
Electronic devices (Intelligent Transport System) relocations and adjustments	Excavator, tippers, lighting tower, hand tools, cable puller	<ul style="list-style-type: none"> EDC area M7 Motorway widening area 	Quiet-moderate	Ongoing
Bridge casting yard including steel assembly, formwork and concrete works	Generators, cranes, lifting equipment, trucks, elevated work platforms, power and hand tools, light towers, lifting equipment, trucks	<ul style="list-style-type: none"> EDC area 	Moderate-noisy	July - October
Bridge structures work including columns, abutments, piers, headstocks, girder installation, deck construction, formworks and concrete works.	Excavators, light and heavy vehicles, cranes, trucks, pumps and vibrators, elevated work platforms, jackhammers, saw cut and coring machine, rigs, compressors, trailers, power and hand tools, light towers, compactors, generators, hydro demolition equipment, water filtration, demolition saw, rollers	<ul style="list-style-type: none"> Existing bridges along the M7 Motorway widening area New bridges at EDC area 	Noisy	Ongoing

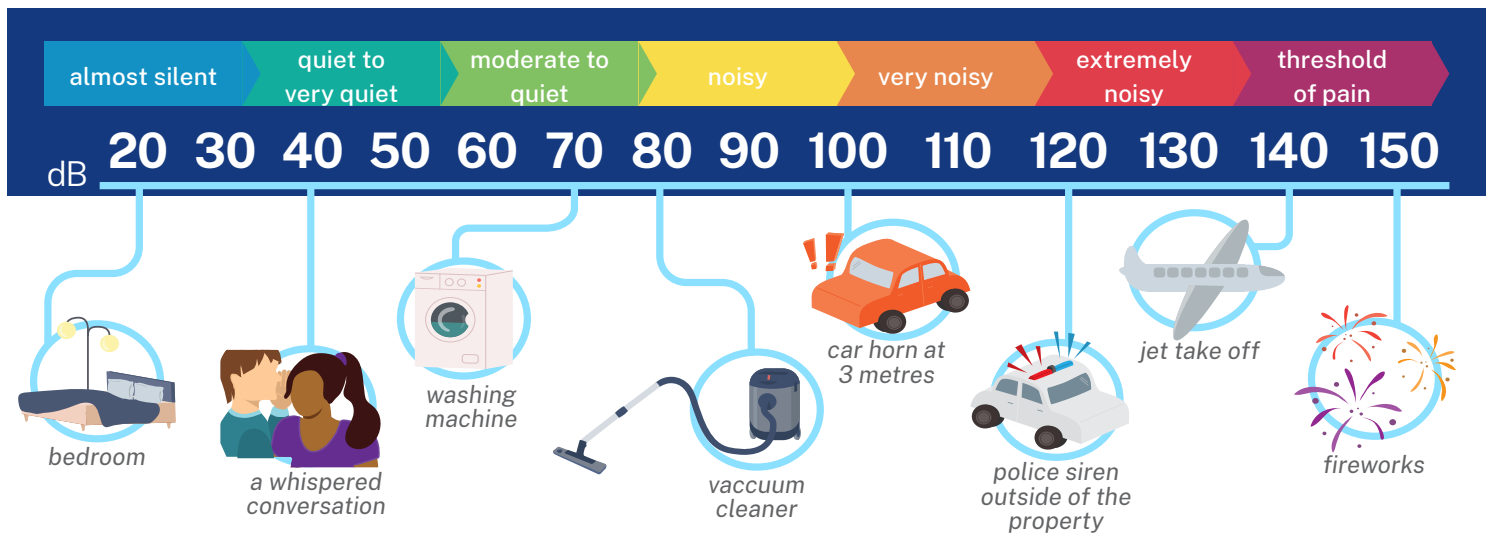


Figure 1 Noise level comparisons: People's perception of noise is strongly influenced by their environment. A noise level that is perceived as loud in one situation may appear quiet in another.

Noise impacts and mitigation

Work will involve the use of machinery, which can be noisy. We understand that night work may disrupt our closest neighbours. We will reduce noise by:

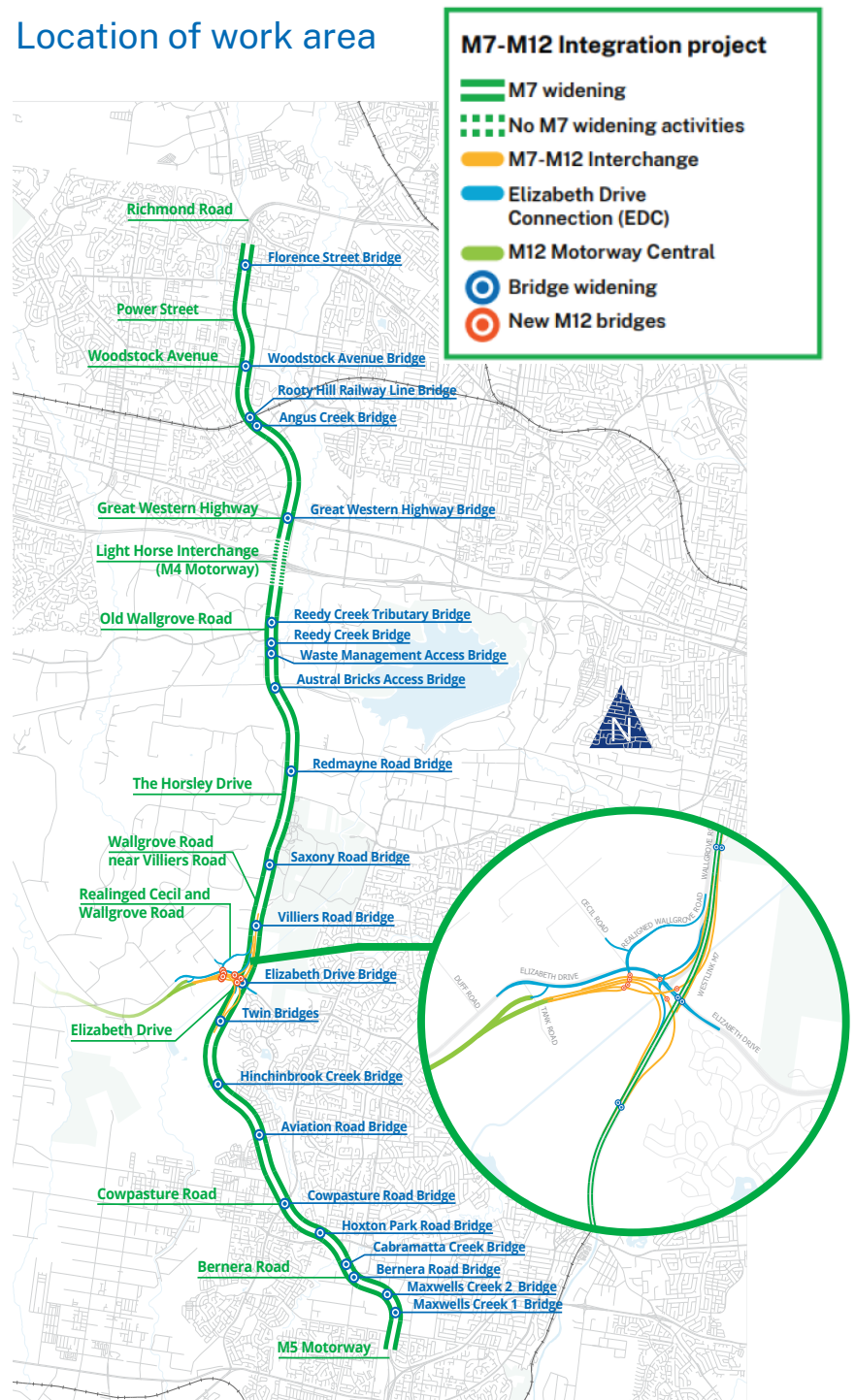
- installing noise blankets on temporary site fences, where possible
- providing breaks from noisy activities (75 dB(A) and above) and activities that have proven to be impactful (e.g. jackhammering, saw cutting), by working three (3) hours on and one (1) hour off in the same location
- using non-tonal reverse beepers
- turning off equipment and vehicles when not in use
- regular monitoring to assess the effectiveness of measures in place. If required, we will put in place extra measures.

Different noise levels are allowed at different times of the day (7am to 6pm), evening (6pm to 10pm) or night (10pm to 7am). If predicted noise levels are higher than the allowable limit, we will apply additional mitigation measures to ensure the works are within the allowable limits.

In the event our noise modelling shows there may be impacts at your property, our community team will contact you directly to discuss respite options.

We will notify eligible residents of any respite arrangements seven (7) days before work, if needed.

Location of work area



Contact us



24/7 project infoline **1800 712 712**



info@m7m12integrationproject.com.au



www.m7m12integrationproject.com.au



PO Box 98,
Kemps Creek 2178



Alternatively, scan the QR code to stay updated



Interpreter service

For languages other than English call **131 450**
Arabic • Greek • Hindi • Mandarin • Vietnamese

طلب خدمة الترجمة الشفهية للغات غير الإنجليزية اتصل
بالرقم **131 450**

Για υπηρεσίες διερμηνείας σε άλλες γλώσσες εκτός από
τα Αγγλικά καλέστε το **131 450**

अंग्रेज़ी के अतिरिक्त अन्य भाषाओं के लिए दुभाषिया सेवा
131 450 पर कॉल करें

获取英语以外的其他语言口译协助服务可以致电**131 450**

Để có dịch vụ thông ngôn cho các ngôn ngữ khác
tiếng Anh, gọi số **131 450**