

Community update

May 2022

## Powerhouse Parramatta | May

Powerhouse Parramatta is the largest investment in cultural infrastructure since the Sydney Opera House, and the first major NSW cultural institution to be established in Western Sydney.

Lendlease is responsible for the detailed design and construction of Powerhouse Parramatta. Main works involve demolition, bulk excavation and earthworks, piling work, services diversions, and the construction of new buildings, the new public domain and landscaping.

Welcome to our first monthly construction update to keep you informed of progress onsite and showcase any key milestones reached in delivering this important project for Western Sydney.

### Key construction activities this month

#### Piling

Piling has commenced on the construction site with the piling rig arriving to site in April. Throughout May to August piling will progressively continue, with a total of 230 piles being created, pending weather conditions.

#### Excavation and earthworks

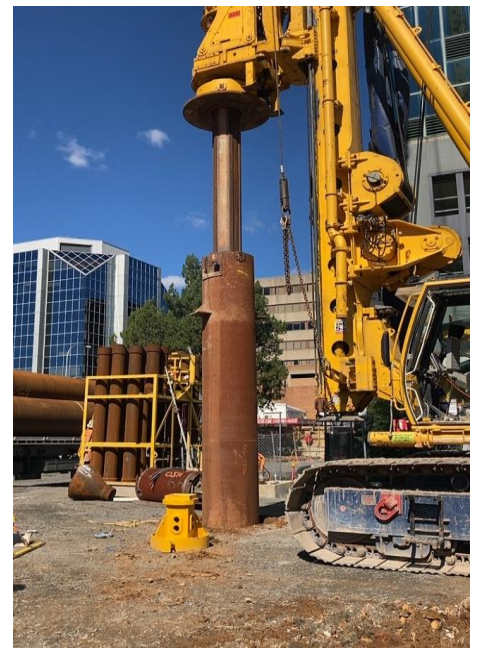
Excavation works are continuing through May to prepare the site for final design levels to allow construction of foundations and the building structure. Excavation works are currently expected to be complete in September, pending weather conditions.

#### Access changes in the area

Work has commenced in **Dirrabarri Lane** to construct two new substations in the area. This includes trenching and demolition of the existing roundabout. Temporary fencing is installed to appropriately separate pedestrians and vehicles from the work zone. A temporary roundabout has been created to manage traffic flow in the area.

Pedestrian and vehicle access will be maintained at all times and this work is expected to be complete in July, pending weather conditions.

Work will also soon commence on the western side of **Wilde Avenue**, at the intersection of Phillip Street, to carry out stormwater diversion works. Expected to commence from May for two (2) months, work will involve appropriate controls (temporary fencing, traffic barriers and pedestrian rerouting) to facilitate excavation of sections of the footpath and road to divert the stormwater service.



Pedestrians on the western side of Wilde Avenue will need to divert to the eastern footpath throughout this work, with signage available to ensure pedestrians are aware of this change. Vehicle traffic on Wilde Avenue will be maintained at all times.

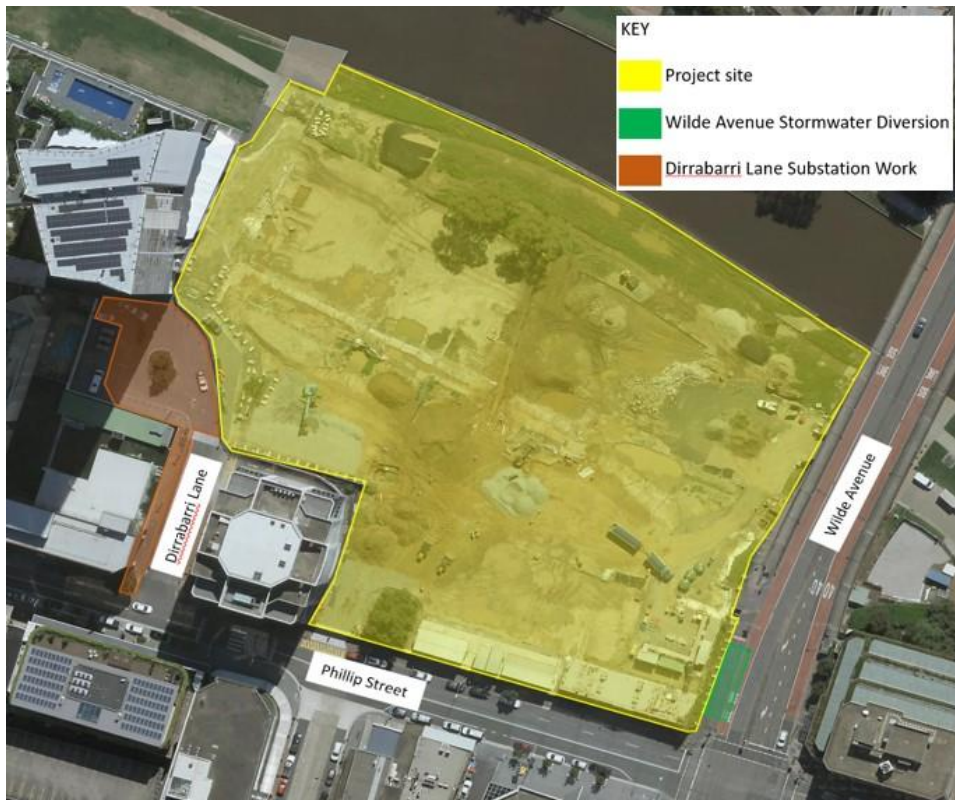


Figure 1: Map of construction activities, May 2022

## Construction hours

Our approved construction work hours are:

- Monday to Friday, 7.00am to 6.00pm
- Saturday, 8.00am to 1.00pm.

Any planned works outside of these hours will be communicated in advance.

## Managing construction activities

We are committed to minimising the impact of our works where we can.

All construction activities are carried out with the health and safety of the local community as our top priority, and in accordance with the approved construction management plans.

We endeavour to keep noise, dust and vibration to a minimum. Thank you for your patience while we progress this important work.

## More information

We are committed to keeping you informed and regular updates will be provided.

Contact us for construction related questions, feedback or complaints:



1800 574 931



powerhouse@lendlease.com



insw.com/powerhouseparramatta

## Moving to digital

As part of our commitment to sustainability, we are moving to a 'digital first' communications approach. Scan the QR code to sign up to receive the latest project updates online.

If you prefer to receive hard copy updates, please contact us with your name and street address.



## Translating and Interpreting Service

If you need an interpreter, please call TIS National on 131 450 and ask them to call Infrastructure NSW on 1800 679 121. Our business hours are 0700 – 1800.

### Arabic

إذا كنت بحاجة إلى مترجم، يرجى الاتصال ب TIS وأطلب منهم الاتصال ب الوطنية على الرقم 131 450 .  
Infrastructure NSW ساعات العمل الخاصة بنا 1800 679 على هاتف 121 . 1800 – 0700.

### Traditional Chinese

若你需要口譯員，請撥打 TIS National 電話 131 450 並請他們轉接 Infrastructure NSW 的電話 1800 679 121。我們的工作時間是 0700 – 1800。

### Simplified Chinese

如果您需要口译员，请拨打 TIS National 的电话 131 450，请他们打电话给 Infrastructure NSW，电话号码： 1800 679 121。我们的营业时间是 0700 – 1800。

### Korean

통역사가 필요한 경우 , TIS 전국서비스 131 450 로 전화하여 , Infrastructure NSW 1800 679 121 로 전화를 걸어달라고 요청하십시오 . 본사의 영업시간은 0700 – 1800 입니다 .

### Hindi

यदि आपको एक दुभाषिया की आवश्यकता है, तो कृपया TIS National को 131 450 पर कॉल करें और उन्हें Infrastructure NSW को 1800 679 121 पर कॉल करने के लिए कहें। हमारे कार्यालय का समय 7.00 से 18.00 है।