

Sydney Gateway

November 2023
Project Update

Sydney Gateway will provide a new, toll-free connection from St Peters Interchange to improve journey times to Sydney Airport, the M5 and Eastern Distributor.

We're excited to announce that Sydney Gateway has made two traffic changes around the Airport Precinct, including opening:

- The first of two Twin Arch Bridges over the Alexandra Canal, with the second bridge ready for vehicles early next year.
- Our 800-metre-long Deborah Lawrie Flyover from Qantas Drive into the Domestic Terminals.

Over the next three months, more changes will be visible on the Project. At our Tempe site we are working to complete the southbound Twin Arch Bridge which is launched and in place over the Alexandra Canal. Over at our St Peters site bridge works are continuing along Canal Road joining Sydney Gateway with WestConnex at St Peters Interchange. Other work includes asphaltting the road surfaces and installation of barriers, medians and road furniture such as lighting, signage and pedestrian rest areas.

What is in this update?

In this Project Update you'll find more information on:

- Our completed and future traffic changes.
- What's happening onsite?
- Sydney Gateway working with the community.
- Sydney Gateway Project achieves MATES in Construction Accreditation.
- What's happening next on Sydney Gateway?



Construction of the Deborah Lawrie Flyover is now complete.



The northbound Twin Arch Bridge is now open to traffic.



The local community enjoyed a big day of family fun at the Sydney Gateway Project Fair Day

Traffic changes onto our new road connections.

In November Sydney Gateway successfully made two traffic changes near the International and Domestic Terminals, changing how you move around the Airport Precinct. In 2024 there will be other traffic changes preparing the project for completion.

Our traffic changes will happen in four key stages



Scan the QR code to watch our video and learn more about each traffic change.



What other traffic changes will I see as part of Sydney Gateway?

In 2024 we will have two other traffic changes, including the opening of our second Twin Arch Bridge and the connection of Sydney Gateway to the St Peters Interchange. Learn more about these traffic changes in our factsheet.

Scan the QR code to read our factsheet and learn more about each stage.



What's happening onsite?



Sydney Airport is proud to name the new Flyover into the domestic terminals after aviation trailblazer, Deborah Lawrie.

While the Flyover is now operational, some final touches on and under the Flyover, along Qantas Drive, will be completed in the coming weeks. Motorists travelling eastbound along Qantas Drive now use the Flyover, to enter the Domestic Terminals instead of turning right off Qantas Drive into Sir Reginald Ansett Drive.

As these roadworks progress, there will be some detours in place with traffic controllers providing assistance to all motorists. However, most of our road works occur after airport operations finish at 11 pm.

St Peters

Finishing works are continuing on the bridge across Canal Road which will connect Sydney Gateway to WestConnex at St Peters Interchange.

The final road surface has been poured on most of the roads within the site with others to be completed in the coming weeks. Installation of road furniture, such as traffic barriers, traffic signals and street lighting is ongoing across the site as well as landscaping, pedestrian rest areas and general finishing works across the project.



Asphalting of all the roads within the St Peters site is nearing completion.

Mascot

Construction of the Sydney Gateway Flyover is complete with the Flyover opening to traffic in the early hours of Sunday 12 November.

Earlier that week, there was a media event hosted by the Minister for Roads, the Hon. John Graham and the Sydney Airport Chief Corporate Affairs Officer, Ms Karen Halbert, with the official name, of the Flyover, announced as the **Deborah Lawrie Flyover**. Deborah Lawrie was the first female commercial pilot of a major airline in Australia starting her flying career in 1980 with Ansett and still flying today. In June 2020 Deborah Lawrie was inducted into the Australian Aviation Hall of Fame.



Construction of the Deborah Lawrie Flyover is now complete opening to traffic in the early hours of Sunday 12 November.

Tempe

Both the northbound Twin Arch Bridge and the Link Road Freight Bridge are now open to traffic. The southbound bridge is now in its final position across the Alexandra Canal with work to complete this bridge ongoing. This includes completing the removal of the temporary teal-coloured struts, pouring the bridge deck, installation of traffic barriers and other road furniture and painting.

Within the Tempe site, there is ongoing work associated with site demobilisation and landscaping.



Construction of the the northbound Twin Arch Bridge is now complete opening to traffic in the early hours of Sunday 19 November.

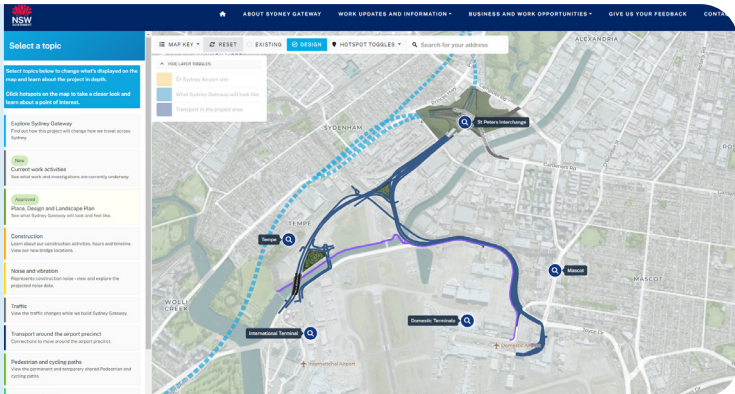


Work continues on the southbound Twin Arch Bridge before it opens to traffic next year.



Ongoing bridge construction in Tempe.

Scan the QR code to view
our current work
activities on our interactive map



Working with the community

Sydney Gateway Community Fair Day

Recently the local community enjoyed a big day of family fun at the Sydney Gateway Fair Day which included food trucks, performers, a giant slide, rock climbing and the chance to walk the northbound Twin Arch Bridge before it opened to traffic.

Our once busy worksite, was filled with colour in the mid-October sun as more than 500 locals and their families came together to celebrate the Project achieving some major milestones.

John Holland & Seymour Whyte Project Director for Sydney Gateway, Andrew Deck, viewed this as a significant event on the project's activity calendar, saying that "Sydney Gateway Fair Day is an opportunity to bring local community on site and see the Project up close while thanking the community for their patience while we continue to deliver this important work."



Balloon modelling and face painting were popular.



Local residents walking the northbound Twin Arch Bridge.



The giant slide was especially popular!



Roll up, roll up! Circus Playground was a big hit with kids and grown-ups.

Scan the QR code to register and learn more about upcoming works.



Sydney Gateway Project achieves MATES in Construction Accreditation

The Sydney Gateway Project has been acknowledged for achieving the rare feat of **MATES in Construction Project Accreditation**.

MATES In Construction - is an industry-led non-profit organisation dedicated to promoting better mental health and suicide prevention within the construction industry and other blue-collar sectors.

Accreditation is given when a project engages at least 80% of all workers onsite to complete MATES General Awareness Training, as well as having a 1-in-20 ratio of volunteer "Connectors" onsite to keep someone safe while connecting them to support.



Sydney Gateway Project Director Andrew Deck with Brad Parker, CEO MATES in Construction

What's happening next on Sydney Gateway?



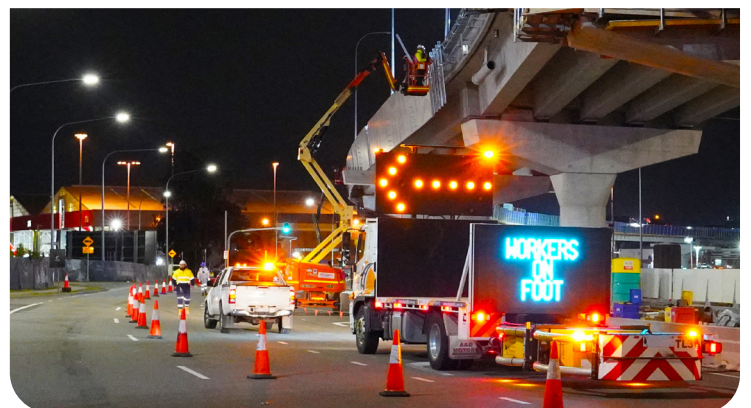
Scan the QR code to watch our latest Upcoming Works video.



Safety is our priority


To keep you and our workers safe, we have footpath, road and lane changes in place while we carry out our work.

As we make changes to how you move around the Airport Precinct, please travel with care, follow directional signs, maintain the required speed limit and plan your trip before travelling.



For enquiries or complaints:

 nswroads.work/SydneyGateway

 1800 654 446 (24/7)

 SydneyGateway@jhswh.com.au



Translating and interpreting service

If you need help understanding this information, please contact the Translating and Interpreting Service on **131 450** and ask them to call us on **1800 654 446**.