



Six month lookahead | North Sydney and Neutral Bay (south of Falcon Street)

Warringah Freeway Upgrade

August 2024



Transport for NSW acknowledges the Cammeraygal people of the Eora nation as the Traditional Custodians of the lands on which we work and pays respect to Elders past and present.

We are simplifying the Warringah Freeway, making it safer and easier to use, and more efficient and reliable for the benefit of all road users, including public transport users.

We are continuing work to widen the freeway, upgrade active transport bridges, road bridges, freeway ramps and vehicle underpasses, and upgrade intersections along the Warringah Freeway between Milsons Point and Willoughby Road.

We appreciate and thank all residents along the project alignment for your patience and cooperation throughout our work to date. The project has achieved several key milestones over the past six months, some of which include:

- installing the steel girder in two segments for the new Ridge Street shared user bridge
- relocating all critical underground utility services on Alfred Street North, north of the existing Ridge Street shared user bridge
- handing over the Berry Street construction support site to the Western Harbour Tunnel project team to commence tunnelling work to build the Berry Street tunnel portal
- implementing multiple temporary traffic changes to allow us to safely carry out construction work, including temporarily closing access to Alfred Street North northbound from Mount Street bridge for up to 18 months.

This community update provides information about upgrade work over the next six months in North Sydney and Neutral Bay.

What are some of the key milestones we look to achieve over the next six months?

Over the next six months, we will continue with work and aim to accomplish the following milestones:

- open the new Ridge Street shared user bridge to pedestrians and cyclists
- commence work to remove the existing Ridge Street shared user bridge
- complete majority of the high-impact construction work for the new Mount Street underpass
- open the new Mount Street bus ramp to general traffic
- commence with first stage of tree replacement at the High Street reserve and Ennis Lane
- construct 50% of the new Alfred Street overpass off ramp structure.

To stay up to date with construction activities happening in your area sign up for weekly work updates at nswroads.work/wfuportal.





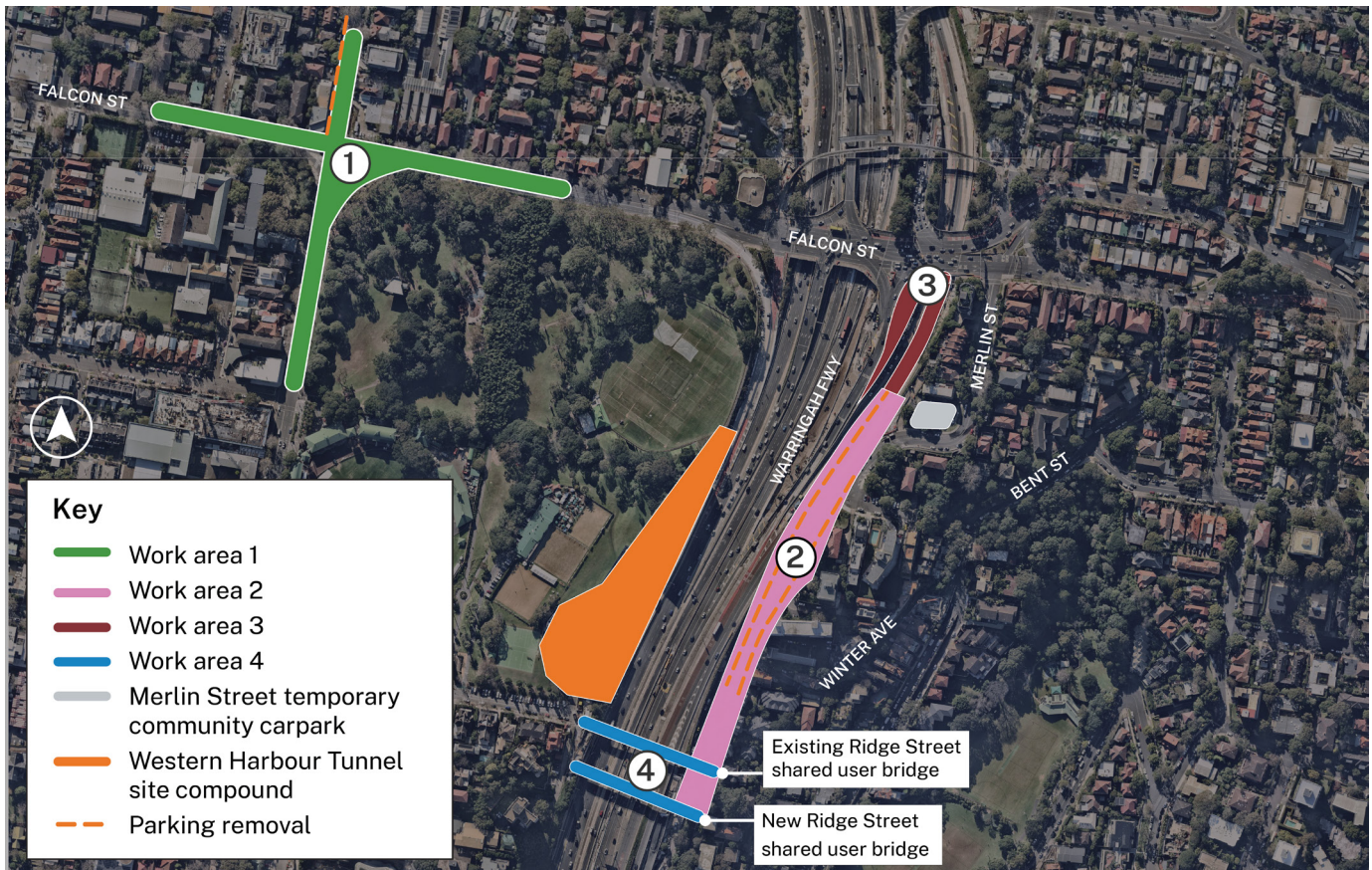
Over weekends in May and June 2024, we successfully installed two bridge spans across the Warringah Freeway for the new Ridge Street shared user bridge using Australia’s biggest cranes.

	<p>Where North Sydney and Neutral Bay</p>
	<p>When From July to December 2024</p>
	<p>Hours of operation</p> <p>Day work: Monday to Friday: from 7am to 6pm Saturdays: from 8am to 6pm</p> <p>Night work: Monday to Friday: from 8pm to 8am. Up to three nights per week, with no more than two consecutive nights, and up to ten nights per month when required. We will notify you ahead of night work.</p> <p>Weekend work: 10pm Friday to 4:30am Monday. We will notify you ahead of weekend work.</p>

Find more information about what is happening over the next six months in North Sydney and Neutral Bay by clicking the links below.

1. [Miller Street and Falcon Street intersection.](#)
2. [Alfred Street North, north of Ridge Street shared user bridge.](#)
3. [Falcon Street bus ramp work areas.](#)
4. [Existing Ridge Street shared user bridge and New Ridge Street shared user bridge.](#)
5. [Ridge Street, North Sydney.](#)
6. [Alfred Street North \(between Mount Street and Winter Avenue\).](#)
7. [Berry Street and Falcon Street off ramp.](#)
8. [Mount Street and Alfred Street North \(north of Whaling Road\).](#)
9. [High Street east.](#)
10. [Arthur Street and Pacific Highway.](#)
11. [High Street bridge.](#)
12. [Warringah Freeway southbound and northbound lanes.](#)





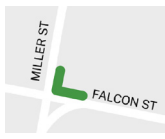
Map 1–Work areas 1 to 4 in North Sydney and Neutral Bay

1. Miller Street and Falcon Street intersection, North Sydney

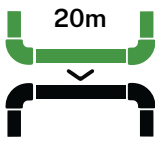
We are upgrading the Miller Street and Falcon Street intersection to improve safety and traffic flow. We are building a dedicated left turning lane from Miller Street southbound to Falcon Street eastbound. We are also installing an additional right turn lane from Falcon Street westbound to Miller Street northbound.

Please view the [‘Miller Street and Falcon Street intersection upgrade’ notification \(MW056S\)](#) for more information.

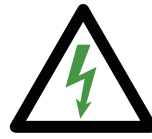
What have we done so far?



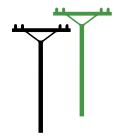
Established a work area at the northeast corner of Falcon Street and Miller Street to build a new dedicated southbound left turn lane.



Completed 20 metres of Sydney Water pipe relocation.

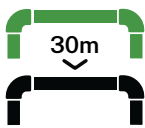


Completed 20 metres of Ausgrid high voltage utility relocation.



Relocated two existing power poles and overhead wires.

What we plan to do in the next six months?



Complete another 30 metres of Sydney Water pipe relocation.



Commence work to install new underground traffic signal infrastructure.

2. Alfred Street North from Ridge Street user bridge to Merlin Street, Neutral Bay

We are building and upgrading kerbs, footpaths, and roadway. We have started removing old, and building new, retaining walls along Alfred Street North to accommodate widening of the freeway and construction of the new Falcon Street southbound bus ramp from Falcon Street bridge, landing at freeway level near Merlin Street, Neutral Bay.

Please view the [‘Road and footpath work, retaining wall removal and long-term traffic changes on Alfred Street North’ notification \(MW204S\)](#) for more information.

What have we done so far?



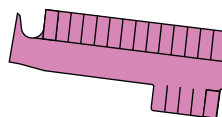
Successfully completed all Sydney Water pipe relocations. In total, we have installed 300 metres of pipes. We also successfully relocated all gas services. In total, we have installed 410 metres of high-pressure gas pipes and 400 metres of medium gas pipes.



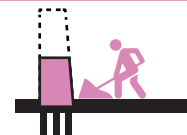
Successfully relocated communications services. In total, we installed 40 metres of new cables.



Completed three Sydney Water outages and two gas burn-offs for water and gas relocations.



Established a temporary car park at Merlin Street reserve, Neutral Bay, with up to 18 car spaces available for the community to use. Once the project is complete, the temporary car park will be returned to the community as green space.



Commenced work to build new roadway and footpaths, and upgrade stormwater drainage on Alfred Street North, north of the Ridge Street shared user bridge.

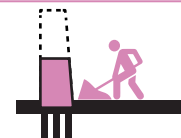
What we plan to do in the next six months?



Complete footpath and road restoration work along Alfred Street North, north of the Ridge Street shared user bridge.



Complete work to remove the existing retaining wall between the Ridge Street shared user bridge and Merlin Street.



Commence work to build the new retaining wall, between the Ridge Street shared user bridge and Merlin Street.



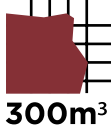
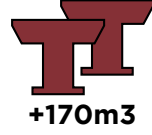
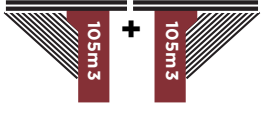
3. Falcon Street southbound bus ramp work area

We are building a dedicated southbound bus on ramp from Falcon Street, Neutral Bay to the Warringah Freeway. The dedicated bus on ramp will be a separated, raised bridge, removing the need for buses to use the existing on ramp that currently serves both buses and general traffic.






The new on ramp will be used exclusively as a bus lane. The bus on ramp will begin at Falcon Street bridge and land on the easternmost side of the freeway, eliminating conflicts with merging and weaving general traffic and improving overall safety for buses travelling toward the Sydney CBD.

Please view the [‘Falcon Street southbound bus on ramp construction’ notification](#) for more information.

What have we done so far?

				
Refined the design of the Falcon Street bus on ramp to mitigate visual and amenity impacts.	Temporarily closed the footpath on the southern side of the Falcon Street traffic bridge and implemented a pedestrian and bicycle rider detour while we continue work to build the southbound bus on ramp.	Demolished and removed over 300 cubic metres of reinforced concrete from the southeast corner of the existing Falcon Street bridge.	Strengthened two existing Falcon Street bridge piers using 170 cubic metres of concrete.	Used 210 cubic metres of concrete to build two bridge abutments to widen Falcon Street bridge.

What we plan to do in the next six months?

				
Demolish the concrete walls on the eastern side of the freeway next to the new bus on ramp.	Pour over 100 cubic metres of the concrete bridge deck for the Falcon Street widening bridge.	Establish a new construction area on the eastern side of the Warringah Freeway.	Install one new bridge pier and two more bridge abutments to support the new Falcon Street bus bridge.	Continue with work to install a total of six prefabricated steel girders for the Falcon Street bus bridge.

4. New Ridge Street shared user bridge

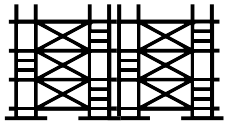
We are replacing the Ridge Street shared user bridge with a new upgraded shared user bridge spanning the Warringah Freeway, linking Ridge Street, North Sydney and Alfred Street North, Neutral Bay. The existing bridge will remain open until the new bridge is opened around 40 metres to the south. The new bridge will be wider than the existing Ridge Street bridge and include a new shared path ramp, and lift, and feature a newly designed Ridge Street lookout with Sydney CBD skyline views.

Please view the [‘Construction of the new Ridge Street shared user bridge, North Sydney’ notification](#) for more information.

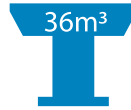
What have we done so far?



Successfully removed the ramp and stairs access to the existing Ridge Street bridge from Alfred Street North.



Installed a temporary scaffolding ramp to accommodate freeway widening and utility work.



Completed Pier 1 for the new Ridge Street shared user bridge over December 2023 and January 2024, with over 36 cubic metres of concrete poured.



Successfully installed the steel girder in two segments in May and June 2024, with the heaviest segment weighing 120 tonnes.

What we plan to do in the next six months?



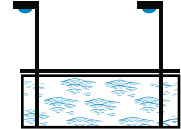
Commence and complete the construction of the concrete deck on the new Ridge Street shared user bridge.



Open the new Ridge Street shared user bridge for pedestrians and cyclists.



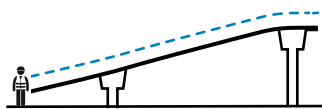
Commence work to install the lift shaft on Alfred Street North for the new Ridge Street shared user bridge, including the sub-structure.



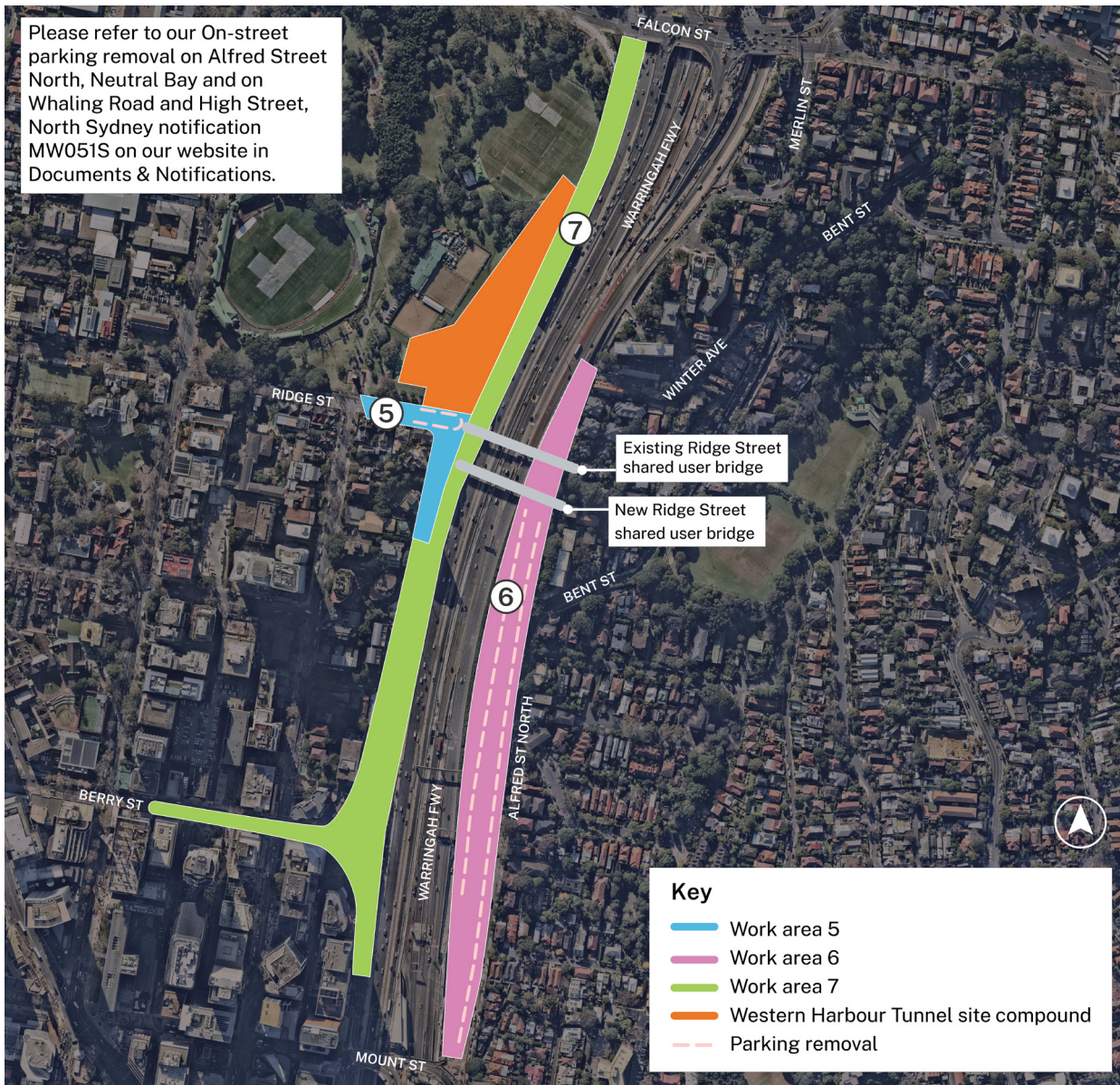
Complete installation of safety screens and lighting on the new Ridge Street shared user bridge.



Commence work to demolish the existing Ridge Street shared user bridge.



Install the new access ramp for the new Ridge Street shared user bridge.



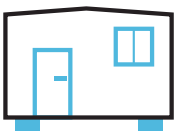
Map 2 - Work areas 5 to 7 in North Sydney and Neutral Bay

5. Ridge Street, North Sydney

We set up temporary worker facilities and amenities at Ridge Street to support construction of the new Ridge Street shared user bridge. We are also building the new Ridge Street lookout, which will connect to the new Ridge Street shared user bridge.

Please view the [‘Ridge Street temporary site compounds’ notification \(MW073S\)](#) or [‘Construction of the new Ridge Street shared user bridge, North Sydney’ notification](#) for more information.

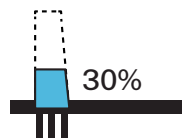
What have we done so far?



Established temporary site to support construction of the new Ridge Street shared use bridge.



Constructed the new bridge abutment for the new Ridge Street shared user bridge. Abutments are structures that support the bridge weight across the freeway lanes.

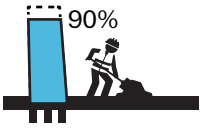


Constructed 30% of the retaining wall at the Ridge Street lookout.



Commenced drainage and Intelligent Transport Systems (ITS) conduit installation work.

What we plan to do in the next six months?



Construct and complete at least 90% of the new retaining wall.



Complete all utility work.



Complete installation of safety screens, lighting, handrails, signage, and line marking.



Construct the new footpaths and kerbs.



Demolish the existing Ridge Street shared user bridge.



Carrying out landscaping and vegetation work.

6. Alfred Street North between Mount Street and Winter Avenue

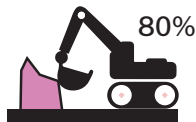
We are building new kerbs, footpath and road surfaces on Alfred Street North to connect into the Ridge Street shared user bridge ramp and lift access. At the southern end of Alfred Street North, we are also building a new overpass structure which will act as a new Alfred Street North southbound off ramp. This will allow general traffic to pass over the new Warringah Freeway southbound bus lane. It also removes the need for buses and general traffic to weave on the Warringah Freeway, increasing overall safety and functionality. We are also constructing new retaining walls between the new Alfred Street North overpass structure and the Mount Street underpass.

Please view the [‘Alfred Street North upcoming work and temporary access changes’ notification \(MW095S\)](#) for more information.

What have we done so far?



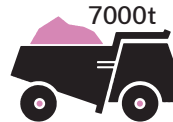
Installed 65 piles for the new Alfred Street North overpass structure.



Demolished 80% of the existing retaining walls.



Constructed 30% of the new retaining walls.



Removed 7000 tonnes of spoil, which is being recycled for use on other road projects and land development sites.



Commenced drainage installation work.

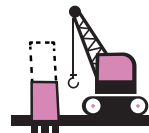
What we plan to do in the next six months?



Complete all relocation and installation of new drainage and utility services.



Continue demolition of existing retaining walls.



Construct new retaining walls.



Construct 50% of the new Alfred Street overpass off ramp structure.

7. Warringah Freeway from Berry Street to Falcon Street, North Sydney

Since 2022, we have carried out road resurfacing, road widening, kerb, and utility installation work at the Berry Street work areas in preparation for the future Western Harbour Tunnel. In February 2024, the Warringah Freeway Upgrade project team successfully handed over the Berry Street construction support sites to the Western Harbour Tunnel team to take over these sites and continue their work.

The Western Harbour Tunnel will connect the Rozelle Interchange to the Warringah Freeway at North Sydney via an on ramp from Berry Street to the southbound mainline tunnel and an off ramp from the northbound mainline tunnel to Falcon Street, North Sydney.

An additional Western Harbour Tunnel entry and exit will be available within the freeway lanes north of Ernest Street in Cammeray.

For more information on the Western Harbour Tunnel project, visit their website nswroads.work/whtportal.

What have we done so far?



Established two temporary construction support sites within the eastern and western sides of the Berry Street on ramp.



Successfully realigned the sewer along the Berry Street on ramp.



Poured 600 cubic metres of concrete and installed 1500 tonnes of asphalt for road widening and realignment work of the Berry Street on ramp.



Successfully handed over the construction support sites to the Western Harbour Tunnel project team in February 2024.

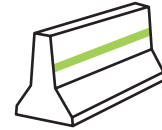
What we plan to do in the next six months?



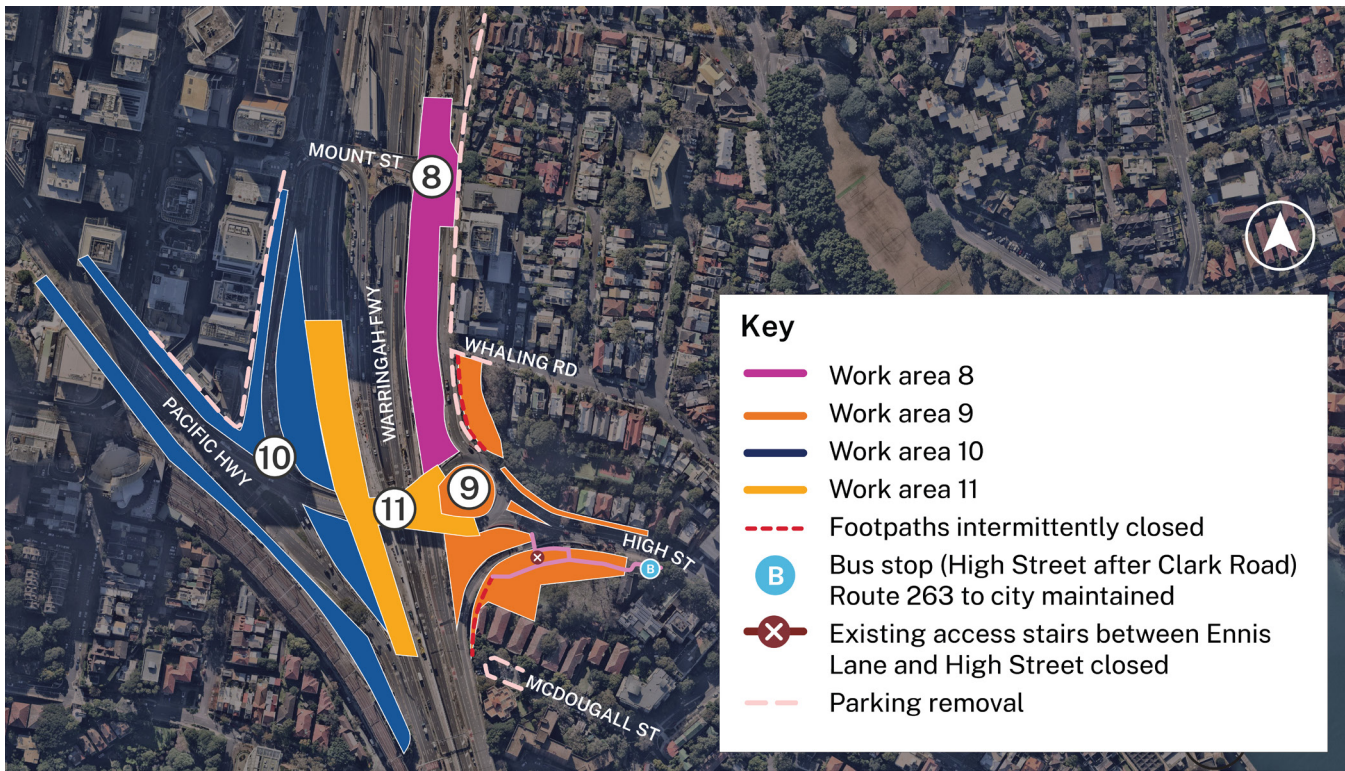
Install new gantry structures for future signage and lane changes.



Install new underground services to feed future variable message boards.



Pour new permanent concrete barriers.



Map 3-Work areas 8 to 11 in North Sydney and Neutral Bay

8. Alfred Street North from Mount Street bridge to High Street

We are upgrading the Mount Street bridge which will include building three south-facing on ramps, including a new bus on ramp, to connect traffic from Mount Street to the Warringah Freeway southbound and building a new underpass for general freeway traffic beneath Mount Street. Once completed, the upgraded Mount Street interchange will provide direct connections to the Sydney Harbour Bridge, Cahill Expressway and the citybound bus lane. The new underpass will improve safety by removing the existing 400 metre weave between buses and general traffic on the freeway north of High Street.

What have we done so far?

All the Mount Street bus ramp steel girders have been erected, with 27 tonnes of steel used.	The deck on the existing Mount Street bridge has been widened and the new deck for the bus ramp has been poured, with 83 cubic metres of concrete of poured.	Completed Sydney Harbour Tunnel's watermain relocation into the new underpass service trough weighing 17 tonnes.	Built the ramp for the new Mount Street bus ramp structure.	Temporarily relocated the Mount Street/Alfred Street North intersection pedestrian crossing approximately 20 metres south of the existing location.	Implemented the temporary closure of the left turn from Mount Street to Alfred Street North, northbound.

What we plan to do in the next six months?

Complete hot-tapping (gas burn-offs) work for Jemena high pressure gas relocation work.	Open the new Mount Street bus ramp to general traffic.	Commence construction of the Mount Street underpass structure, and complete majority of the high-impact construction work activities.

9. High Street area east of the freeway

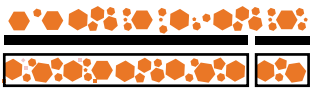
We are upgrading the High Street and Alfred Street North intersection to improve connectivity and safety as the North Sydney community continues to grow.

The High Street upgrade includes:

- widening and upgrading the High Street bridge with four westbound lanes and two eastbound lanes
- building a new pedestrian and cycling path on the southern side of the High Street bridge
- installing a new northbound on ramp from High Street to the Warringah Freeway (this will become operational when the Western Harbour Tunnel project is completed)
- upgrading the Alfred Street southbound off ramp to create a direct connection to High Street
- installing traffic lights at the High Street and Alfred Street North intersection
- installing new medians and line marking to and from Whaling Road via Alfred Street North.

Please view the [‘High Street interchange upgrade, North Sydney’ notification \(MW158S\)](#) for more information.

What have we done so far?



Successfully completed two weekend shutdowns to reconstruct and tie-in the existing pavement.



Commenced work to upgrade the existing roundabout at the Alfred Street North and High Street intersection to a signalised intersection, including tree removal, drainage and temporary pavement construction work.

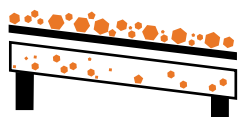


Commenced work to install Intelligent Transport Systems (ITS) electrical cabling pits and utility services underground, which will support the traffic infrastructure along High Street including street cameras and traffic lights.

What we plan to do in the next six months?



Commence building the new noise wall on top of the retaining wall along McDougall Street at the western side of the High Street on ramp.



Complete the High Street southbound on ramp pavement.



Carry out three more weekend shutdowns to reconstruct and tie-in the existing pavement.



Implement changed traffic conditions while we convert the existing High Street roundabout at the intersection of High Street and Alfred Street North to a traffic light intersection.



Install traffic lights at the High Street and Alfred Street North intersection.



Complete the footpath work along Ennis Lane adjacent to the High Street southbound on ramp.



Complete landscaping and fencing installation work at the High Street reserve and Ennis Lane.


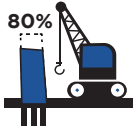



10. Arthur Street and Pacific Highway, North Sydney

We are reconfiguring lanes along Arthur Street from the intersection with the Pacific Highway and High Street to Mount Street to include an additional northbound kerbside traffic lane. The upgraded Arthur Street/Mount Street intersection will allow for three right turn lanes into Mount Street eastbound and one left turn lane into Mount Street westbound.

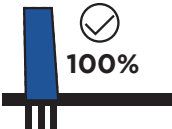
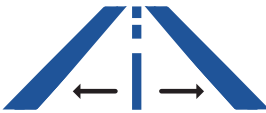




The upgraded intersection at Pacific Highway, Walker Street and Blue Street will improve how North Sydney traffic will access the Warringah Freeway to be safer, easier, and more reliable.

Please view the [‘High Street interchange upgrade, North Sydney’ notification \(MW158S\)](#) for more information.

What have we done so far?

				
<p>Implemented temporary construction site and traffic management to complete the new northbound widening between the Pacific Highway off ramp and Mount Street bridge.</p>	<p>Completed over 80% of the retaining wall work for the new northbound widening between the Pacific Highway off ramp and Mount Street bridge, which includes over 420 soil nails installed and 280 cubic metres of shotcrete completed to date.</p>	<p>Excavated and removed over 14,000 tonnes of material for the new northbound widening between the Pacific Highway off ramp and Mount Street bridge.</p>	<p>Commenced pavement work including, installation of stormwater drainage and concrete pavement.</p>	<p>Commenced with conduit installation work for the Intelligent Transport System (ITS).</p>

What we plan to do in the next six months?







			
<p>Complete retaining wall work for the new northbound widening between the Pacific Highway off ramp and Mount Street bridge.</p>	<p>Complete the new northbound pavement widening work between the Pacific Highway off ramp and Mount Street bridge.</p>	<p>Install concrete precast fascia panels for the new northbound widening between the Pacific Highway off ramp and Mount Street bridge.</p>	<p>Implement the next traffic change on the Warringah Freeway which will divert traffic on to the new northbound widening.</p>
			
<p>Implement staged traffic changes at the High Street and Arthur Street intersection in preparation for upgrading the intersection.</p>	<p>Commence construction of the pavement work to upgrade the High Street and Arthur Street intersection.</p>		

11. High Street bridge and new northbound on ramp




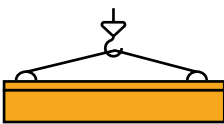

We are upgrading and widening the High Street bridge which will feature four westbound lanes and two eastbound lanes to provide improved capacity to and from North Sydney via Pacific Highway. We are also building a new northbound on ramp from the High Street bridge onto the Warringah Freeway, and a new pedestrian and cycling path on the south side of the High Street bridge.

Please view the 'High Street interchange upgrade, North Sydney' notification (MW158S) for more information.

What have we done so far?

 <p>Completed construction of the abutments for the new High Street bridge widening and completed construction of one of the abutments for the new High Street northbound on ramp.</p>	 <p>Completed Piers 1, 3, 4 and 5 for the new High Street bridge widening and completed Pier 1 for the new High Street northbound on ramp.</p>	 <p>Successfully poured 1100 cubic metres of concrete in total for all the piers and abutments to date.</p>	 <p>Successfully installed 8,400 tonnes of steel reinforcement in total to support the abutment and pier structures.</p>
 <p>Completed and installed 13 foundation piles.</p>	 <p>Completed and installed eight foundation ground anchors.</p>		

What we plan to do in the next six months?

 <p>Complete Pier 2 for the new High Street bridge widening.</p>	 <p>Complete Piers 2, 3, and 4 for the new High Street northbound on ramp.</p>	 <p>Complete remaining abutment for the new High Street northbound on ramp.</p>	 <p>Install steel girder beams for the new High Street bridge widening and the new High Street northbound on ramp.</p>	 <p>Commence construction of the bridge deck and approach slabs for new High Street bridge widening.</p>
---	---	--	--	---

12. Warringah Freeway southbound and northbound lanes from Milsons Point to Falcon Street

The Warringah Freeway Upgrade will support the Western Harbour Tunnel to deliver a new motorway connection from North Sydney and Cammeray beneath Sydney Harbour to Rozelle Interchange.

We are widening the freeway and reconfiguring lanes to improve safety by reducing the need for motorists to weave between lanes and installing new lighting and road drainage. We are completing major upgrades to the freeway's electronic safety infrastructure, this includes variable message signs, warning signs, speed signs and traffic analysis tools. Variable message signs help traffic system managers and road users to make more informed decisions based on the current road conditions, such as if there is an accident.

The upgraded freeway lanes will seamlessly integrate with the existing road network and the Western Harbour Tunnel when it opens in 2028.

We are reconfiguring and upgrading the Warringah Freeway southbound and northbound lanes to:

- simplify traffic flow and wayfinding
- optimise the road corridor and improve the performance of the Sydney Harbour Tunnel, the Sydney Harbour Bridge and the Western Harbour Tunnel
- facilitate the surface road works, including upgrades to existing interchanges, such as at High Street.



What have we done so far?

<p>Established multiple temporary construction sites along the Warringah Freeway.</p>	<p>Successfully installed up to 800 linear meters of Intelligent Transport Systems (ITS) conduits and pits, and installed 1,600 linear meters of pits and pipes.</p>	<p>Widened approximately over 1,400 linear meters of concrete pavement.</p>	<p>Installed 900 linear meters of permanent concrete barriers and kerb.</p>

What we plan to do in the next six months?

<p>Implement new traffic changes to open new and expand existing work areas.</p>	<p>Continue Intelligent Transport Systems (ITS), drainage, pavement widening and road furniture installation work along all northbound and southbound lanes.</p>	<p>Commence installing new toll and signage gantries.</p>

Reducing the impact to you

Our work activities will require the use of machinery that generates noise, light and vibration. We implement extensive controls to ensure any noise impacts are mitigated as much as possible.

For more information on how we manage noise, please refer to our 'Managing Construction Noise fact sheet' available online at nswroads.work/wfuportal or scan the QR code.



If you have any comments you would like to provide on the planned work activities, or if you have personal circumstances you need to discuss with us, we would like to hear from you. You can contact us at 1800 931 189 or by emailing whtbl@transport.nsw.gov.au

For the latest work updates, please refer to our latest out of hours three month work notification which can be found online at nswroads.work/wfuportal.

When will we be working?

Most of our work will take place during the day from 7am to 6pm Monday to Friday and from 8am to 6pm on Saturdays. For the safety of the public and our workers, and to minimise traffic impacts, we will need to use the site for some work at night from 8pm to 8am. We will notify local residents ahead of any night work.

There may be occasions where we need to change the sequence of nights we work outside standard construction hours so we can complete the activity sooner.

Extended periods of work in October 2024, December 2024, and January 2025

With fewer vehicles using the Warringah Freeway during long weekends and the holiday period, we can put extended duration lane closures in place. When extended duration traffic lane closures are in place,

we can safely access work areas that we would not normally have access to for longer periods. This increases our project's efficiency, reducing the overall impact to the community compared to delivering this work during single night lane closures or extended weekend shifts.

These temporary traffic changes allow us to create safe work areas next to, over and on the freeway. Carrying out this work over long weekends and the holiday period provides a number of benefits to the local community as a result of:

- improving productivity ultimately shortening the time our project impacts the community
- reducing the amount of noisy night shift
- reducing traffic impacts due to lower traffic volumes.

We will provide more information to the community about the work and temporary traffic changes once we have confirmation of the work areas and the work that will take place.

Changed traffic conditions

Throughout the duration of this upgrade, changed traffic conditions will apply including reducing speed limits, and temporary road and lane closures, to ensure the safety of all road users and our workers. There will be some temporary traffic changes and lane closures that may affect travel times. Resident access will be maintained throughout our work. Motorists may experience short delays while we are working, please plan ahead and allow extra travel time. Please take extra caution and keep to speed limits, follow the direction of signage and traffic controllers.

Subscribe to our updates

Stay in touch and keep up to date with all the activity and traffic changes in your area as we continue to



upgrade the Warringah Freeway. Contact us via the details below to subscribe to email updates today or alternatively, scan the QR code.

Contact us



Project Infoline **1800 931 189**



whtbl@transport.nsw.gov.au



Visit the WFU online portal at nswroads.work/wfuportal



For the latest traffic updates:

Call 132 701, visit livetraffic.com or download the app Live Traffic NSW



Interpreter service

For languages other than English call **131 450**
Mandarin • Cantonese • Spanish • Japanese

获取英语以外的其他语言口译协助服务可以致电**131 450**

獲取英語以外的其他語言傳譯協助服務可以致電**131 450**

Servicio de intérpretes para personas cuyo idioma no es el inglés, por favor, llame al número **131 450**

英語以外の言語の通訳サービスは**131 450**までお電話ください。

www.transport.nsw.gov.au/privacy-statement#Your_Privacy