



Transport for NSW

New England Highway – Muswellbrook bypass

Project update | Concept Design and Review of
Environmental Factors | November 2021



Artist impression of a new bridge over Sandy Creek Road and Main North railway line near the northern connection, looking south.

The NSW Government is delivering a New England Highway bypass of Muswellbrook. The bypass would improve travel times, freight efficiency and safety for all road users.

A concept design and environmental assessment has been prepared for the bypass to identify potential impacts and mitigation activities. You are invited to provide feedback by 5pm on Friday 17 December 2021.

Project background

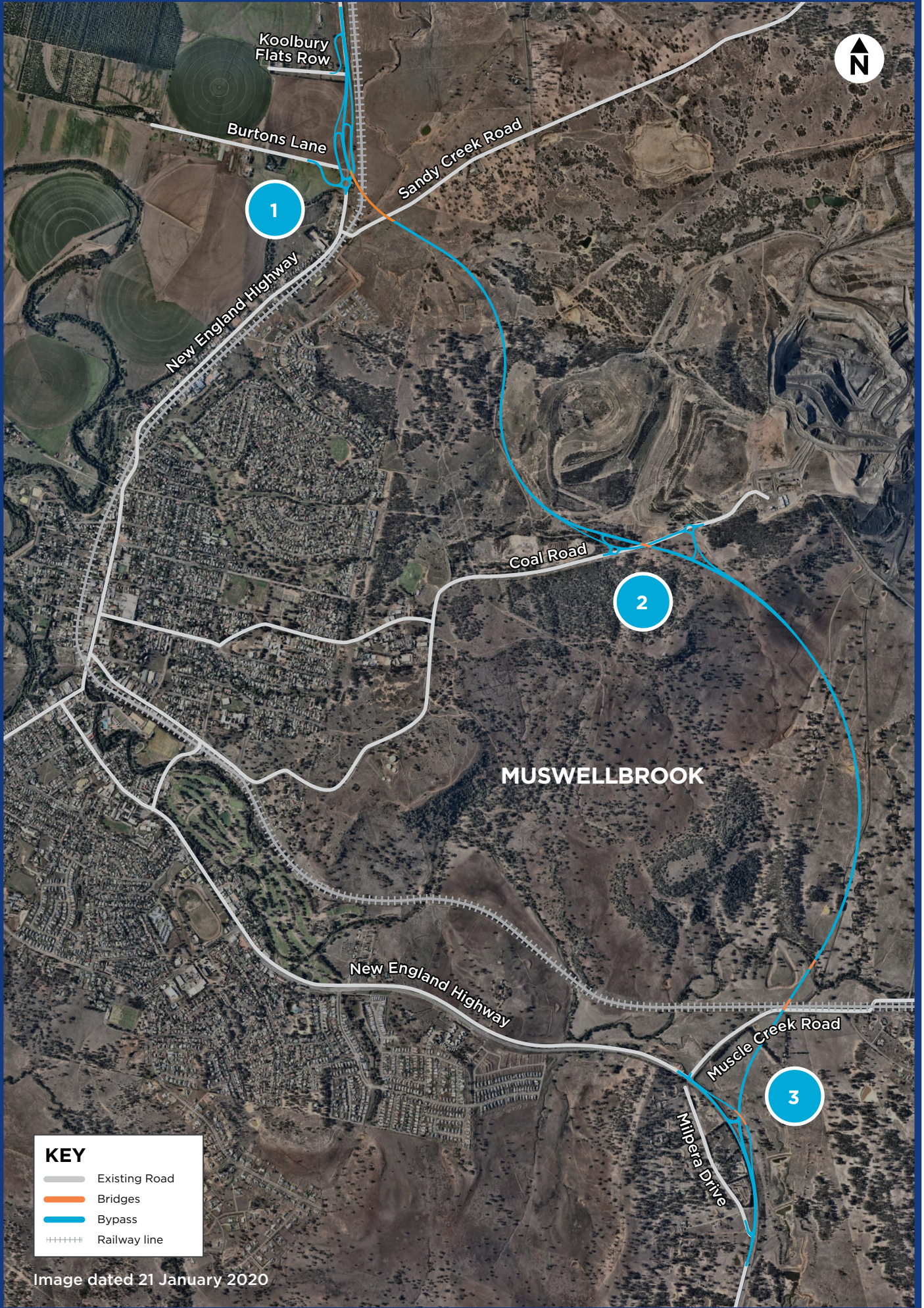
The New England Highway is part of the inland Sydney to Brisbane National Land Transport Network and the primary route connecting the Upper Hunter with Maitland and Newcastle.

The highway currently passes through the centre of Muswellbrook. It is predominately a two lane road, restricted by numerous intersections, varying speed limits and nearby buildings with minimal setback from the road. The highway carries between 11,000 and 20,000 vehicles through the township each day, about 13 per cent being heavy vehicles.

The proposed bypass would reduce the volume of heavy vehicles travelling through Muswellbrook, improving safety and amenity in the township. The proposal would improve travel times by providing a free flowing 100 km/h alternative route.

The preferred route corridor for the bypass was published in July 2018 and a preferred option for the bypass was announced in November 2020. The preferred option included a refined alignment of the bypass south of Coal Road, and full southern and northern connections with the existing New England Highway. Feedback received on the preferred option was considered to further refine and prepare the concept design and environmental assessment for the bypass.

New England Highway – Muswellbrook bypass Concept Design



1. Northern Connection



2. Coal Road Connection



3. Southern Connection



Visit our new interactive web portal at nswroads.work/Muswellbrook to find out more about the concept design and review of environmental factors.



The proposal

The proposed Muswellbrook bypass would include:

- about nine kilometres of new highway with a single lane in each direction with a one metre wide centreline treatment
- full southern and northern connections with the existing New England Highway which provide for all traffic movements
- full central connection with Coal Road which provides for all traffic movements
- five bridges, including a 367 metre long bridge over Sandy Creek Road, Sandy Creek, the Main North railway line and southbound exit ramp
- local road adjustments including Burtons Lane, Koolbury Flats Row, Milpera Drive and Muscle Creek Road

Key benefits

The proposed bypass would:

- improve network efficiency on the New England Highway, particularly travel times for long haul freight movements
- improve safety for all road users in the town centre, particularly relating to heavy and light vehicle interactions
- improve amenity of Muswellbrook township by removing freight traffic

Changes to the design

A preferred option for the bypass was displayed for feedback between 23 November and 18 December 2020. Following your feedback and further investigations, we made a number of changes to the proposed design. These changes include:

- a full connection at Coal Road included, providing a link to the Muswellbrook Town Centre
- connection of Burtons Lane and the New England Highway modified to join to the roundabout at the northern connection.
- connection of Koolbury Flats Row and the New England Highway been moved further north providing increased safety. A dedicated left turn deceleration lane has been provided for traffic entering Koolbury Flats Row.
- right and left turning lanes provided at the connection of Milpera Drive and the New England Highway to assist vehicle turning movements and improve the safety of access



Artist impression of the southern connection, looking south



Save travel time



Keep trucks off local streets



Improve safety on the existing highway

Environmental assessment

Transport for NSW has prepared a review of environmental factors (REF) to determine the potential environmental and social impacts, and proposed mitigation measures for the Muswellbrook bypass.

The REF is made available for community members and other stakeholders to review and submit their comments and questions.

Each submission received through the REF process will be considered and assist the planning and delivery of the project.

The REF explains the proposed method to build the bypass and addresses how the work will be managed, including the proposed methods used to minimise environmental impacts on:

- the local community through traffic, access, noise and vibration
- biodiversity, including flora and fauna
- soils and water quality
- socio-economic
- Aboriginal and non-Aboriginal heritage
- flooding

Our online portal includes information about the REF with maps and diagrams used to help describe the potential impacts of the proposal.

Have your say

Transport for NSW is inviting feedback from you about the Muswellbrook bypass concept design and REF.

Have
your say

There are a number of ways you can get involved, including visiting our virtual consultation room, commenting via the interactive web portal or by calling or emailing the project team.

Submissions close on Friday 17 December 2021 at 5pm.

To have your feedback formally considered, and receive a response in the Submissions Report, make a written submission via:

- our online submissions form via the interactive web portal at nswroads.work/muswellbrook
- mail to Muswellbrook bypass Project Team, Locked Bag 2030 NSW, 2300
- email to Muswellbrook.Bypass@aecom.com.



Artist impression of the southern connection, looking north.

Find out more



For more information on this project scan this code, or visit nswroads.work/Muswellbrook

Speak to the project team

We recognise the Muswellbrook bypass is important to the community and we are committed to continuing to work with you and adapting to the changing circumstances around COVID-19.

We will hold virtual information sessions to ensure you have the opportunity to learn more about the REF and to ask our project team questions. This will also help ensure your safety and comply with COVID-19 restrictions.

Wednesday 24 November 6-7pm

Thursday 25 November 10-11am

Access the online information sessions at the relevant time using the QR code in this update or visit nswroads.work/Muswellbrook.

Contact us

If you have any questions or would like more information please contact our project team:



1800 517 222 (free call)



Muswellbrook.Bypass@aecom.com



nswroads.work/muswellbrook

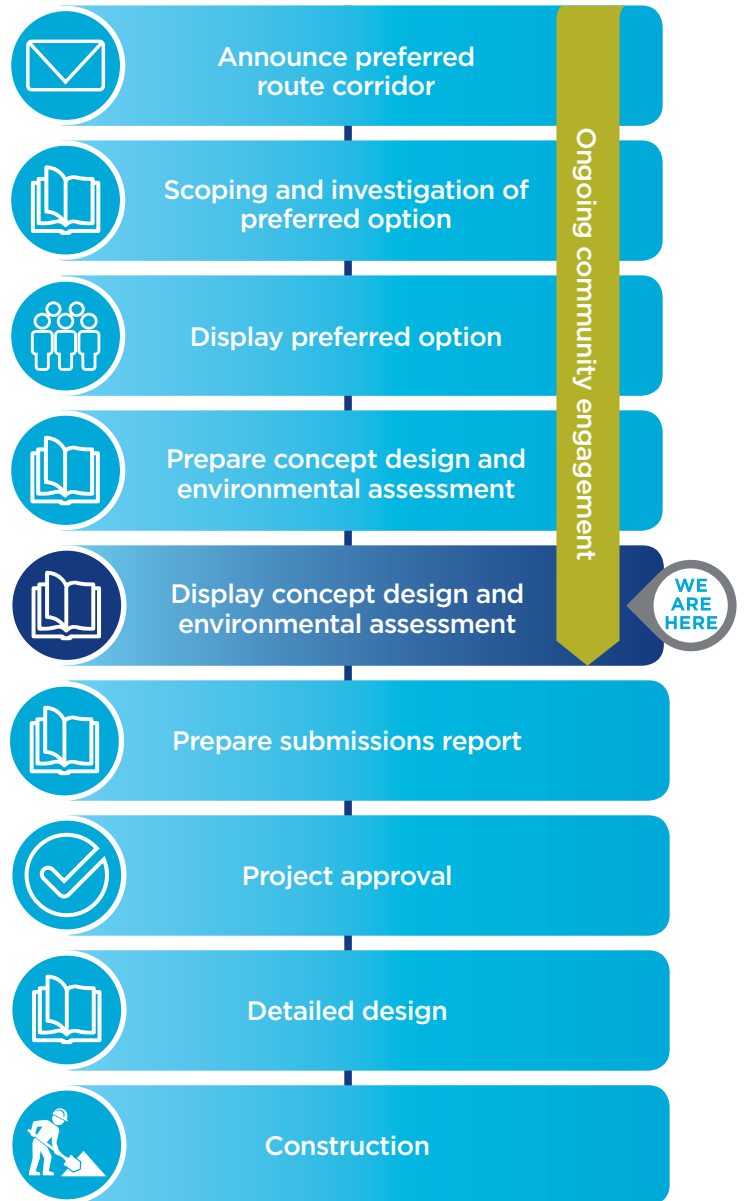


Muswellbrook bypass project team
Locked Bag 2030
Newcastle NSW 2300



If you need help understanding this information, please contact the Translating and Interpreting Service on 131 450 and ask them to call us on 1800 517 222.

Next steps



* Timing for construction of the bypass has not been confirmed and is subject to project approval

November 2021
21.300



Privacy Transport for NSW ("TfNSW") is subject to the Privacy and Personal Information Protection Act 1998 ("PIIP Act") which requires that we comply with the Information Privacy Principles set out in the PIIP Act. All information in correspondence is collected for the sole purpose of assisting in the delivery of this project. The information received, including names and addresses of respondents, may be published in subsequent documents unless a clear indication is given in the correspondence that all or part of that information is not to be published. Otherwise Transport for NSW will only disclose your personal information, without your consent, if authorised by the law. Your personal information will be held by Transport for NSW at 6 Stewart Avenue, Newcastle West. You have the right to access and correct the information if you believe that it is incorrect.