

New landscaping in Cammeray, Naremburn and Neutral Bay

Warringah Freeway Upgrade

May 2025



We are simplifying the Warringah Freeway, making it safer and easier to use, and more efficient and reliable for the benefit of all road users, including public transport users.

	Where Warringah Freeway lanes, intersections and bridges between Merrenburn Avenue, Naremburn and Falcon Street, Cammeray
	When From March 2025 to late 2026.

In March 2025, we started landscaping following community feedback and approval of our Place, Design & Landscape Plan (PDLP).

The landscaping plans were developed in consultation with North Sydney Council, Willoughby Council, the NSW State Design Review Panel, then refined by community feedback received during the Warringah Freeway Upgrade PDLP public exhibition in June and July 2023.

The new landscaping will begin to replace trees and vegetation that were removed to allow for upgrade work as part of the project. Landscaping work for the Warringah Freeway Upgrade will continue progressively across the project area until scheduled completion in 2026, separate to the Western Harbour Tunnel (WHT) PDLP.

Tree replacement strategy

We recognise the value the surrounding community places on the area's natural landscapes, heritage features and open space.

North Sydney and Willoughby City councils have been consulted on the species, location and other vegetation being planted within the project footprint and is supportive of the final selections. We are continuing to work with both councils to determine the best outcomes for replacement tree species, sizes and locations, outside the project boundary.

We have identified various opportunities to replant vegetation as early as possible in the local community. We will notify nearby residents of upcoming replanting before it begins in their area.

More information about the Tree Replacement Strategy is available at nswroads.work/wfu-tree-replacement.

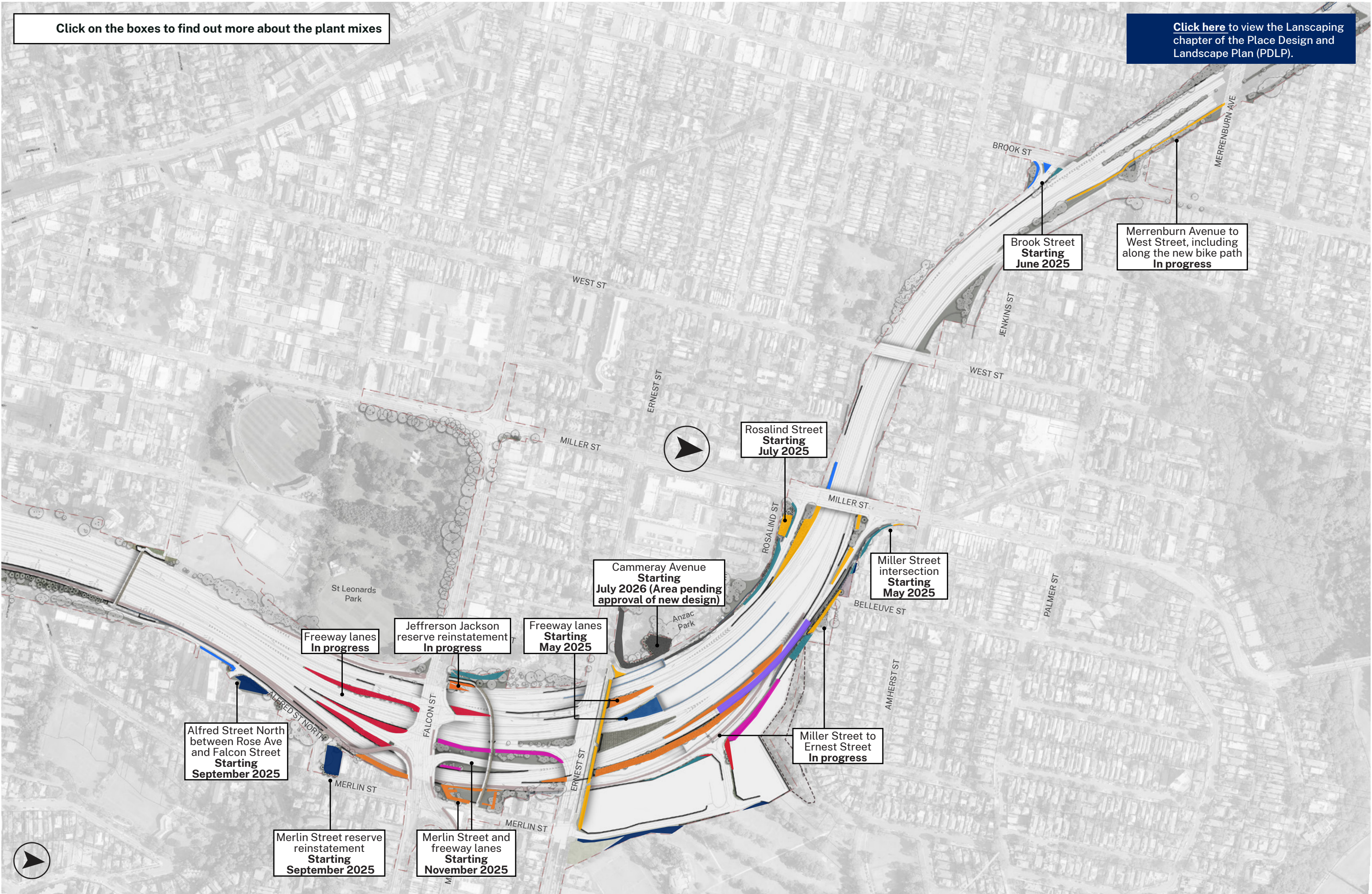


You'll notice us starting to mulch and landscape areas across the project as we finalise the work activities.

View the areas to be landscaped and timings on the map over the page.



Scan the QR code to view the full PDLP document or view online at nswroads.work/wfuportal



How were the landscaping plans developed?

The landscaping design objectives were to create a revegetated corridor that offers improved amenity for local residents, provides a high quality environment for pedestrians and cyclists and integrates the local streetscape with adjacent open spaces and reserves.

Street trees will be planted to offset and compete with the scale of the widened infrastructure being constructed as part of the upgrade work. Vegetation and trees will be used to screen visually obtrusive elements from nearby residents and create a sense of separation for pedestrians and cyclists from the road edge. The new trees and landscaping will adhere to North Sydney and Willoughby councils planting guidelines.

We will use mature or semi-mature trees and advanced size mass planting, where trees and mass planting have been confirmed in the PDL. All grassed areas will be turfed with rolls and not seeded.

Where is the mulch being sourced?

As the project continues, we are progressively replacing trees and vegetation, including mulch, along the project corridor.

We understand that mulch placement and contamination is a key community concern. To find out more about the mulch being used and our strict controls, please view our Frequently Asked Questions (FAQs) page online at nswroads.work/wfu/FAQ.

What tree species are being planted?

The tree mix will include indigenous groundcover species and, for feature planting, a combination of larger indigenous, non-indigenous and horticulturally cultivated tree species. They will be between 45 litres and 200 litres in size ("super advanced" to "semi-mature").

For future plantings elsewhere along the corridor, large local native trees will be maximised where possible to help promote urban cooling by increasing the tree canopy cover.

Careful consideration of planting has been completed to create micro-habitats with deep rooted native species to stabilise soil. We are also aiming to create high quality, multi-layered shade canopy to protect the understorey plants, improving resilience of the exposed landscape to climate stress.

How will the landscaping be maintained?

We understand that landscaping and vegetation may be damaged by weather conditions or wildlife, including the known local brush turkeys. The Warringah Freeway Upgrade project team is committed to maintaining the landscaped areas currently under our care and replanting any damaged trees until these areas are handed back to North Sydney Council or other relevant caretakers.

Landscaping in other areas

To see the landscaping timeline areas in North Sydney & Neutral Bay, please see our 'New landscaping in North Sydney & Neutral Bay' fact sheet (April 2025).



Contact us



Project Infoline **1800 931 189**



whtbl@transport.nsw.gov.au



Visit the WFU online portal at nswroads.work/wfuportal



For the latest traffic updates:

Call 132 701, visit [livetraffic.com](https://www.livetraffic.com) or download the app Live Traffic NSW



Interpreter service

For languages other than English call **131 450**

Mandarin • Cantonese • Japanese • Korean

获取英语以外的其他语言口译协助服务可以致电**131 450**

獲取英語以外的其他語言傳譯協助服務可以致電**131 450**

英語以外的言語的通訳サービスは**131 450**までお電話ください。

영어 외 기타 언어 통역 서비스는 **131 450**번으로 전화하세요

www.transport.nsw.gov.au/privacy-statement#Your_Privacy