



# Weekend lane closures on M7 Motorway in Oakhurst, Horsley Park and Hinchinbrook

## M7-M12 Integration project

May 2025



We acknowledge the Dharug people of the Darug Nation as the Traditional Custodians of the lands on which we work and pay respects to Elders past and present.

The M7-M12 Integration project will support future development growth in Western Sydney by improving travel times and congestion. Once complete, the project will provide direct access to commercial and residential hubs, and the new Western Sydney International Airport.

### What work are we doing?

We will continue to pour concrete to join the new bridge deck to the existing bridge deck along the M7 Motorway in **May 2025**. This will occur at **Florence Street Bridge, Saxony Road Bridge and Hoxton Park Road Bridge**.

Work will include:

- setting up traffic control
- delivery, mobilisation and demobilisation of machinery, equipment and materials to site work areas
- concrete pours for bridges.

### Our work schedule

We will work at night and across weekends when traffic volumes are lower. This is to reduce traffic impacts and for the safety of our workers and road users.

The bridge deck concrete pour activities will take place on the following dates, subject to approval and weather permitting:

- **Friday 16 May to Sunday 18 May 2025** at Florence Street Bridge and Hoxton Park Road Bridge

- **Friday 23 May to Sunday 25 May 2025** at Saxony Road Bridge.

### What equipment will be used?

We will use lighting towers, delivery trucks, light and heavy vehicles, concrete trucks and pumps, hand and power tools, traffic control equipment and vehicles.

### Managing our impacts

Some of this work will be noisy. You will see an increase in activity in the area as workers move around the site.

### Traffic changes

There will be temporary traffic changes including northbound and/or southbound right lane closures, reduced lane widths and reduced speed limits along the M7 Motorway near the work zones. Traffic will be maintained in both directions during this work. Road users will be notified of traffic changes via variable message signs (VMS) and on-site signage. Please expect traffic delays during these activities, plan your journey and drive carefully.

Please see page over for traffic impacts and maps.

Pedestrian and cyclist access on the shared user path along the M7 Motorway will not be impacted. For the latest traffic updates, you can call 132 701, visit [livetraffic.com](https://www.livetraffic.com), download the Live Traffic NSW app or download the Linkt app and switch on Road Alerts for M7 roadworks.

During these activities, the following traffic changes and speed reductions will be implemented along the M7 Motorway near **Florence Street Bridge**:

- from **8pm Friday 16 May** to **7am Saturday 17 May**, the right lanes will close and the speed limit along the M7 Motorway will be reduced from **80km/hr** to **40km/hr**.
- from **7am Saturday 17 May** to **8am Sunday 18 May**, the speed limit along the M7 Motorway will be changed to **60km/hr** and right lanes will remain closed.

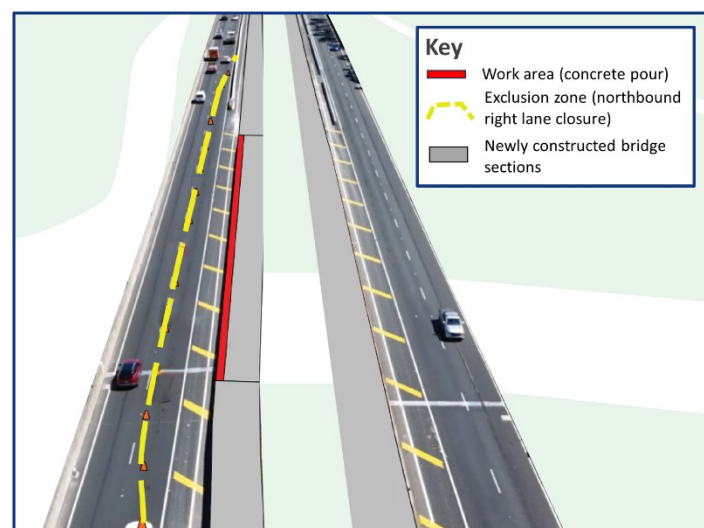
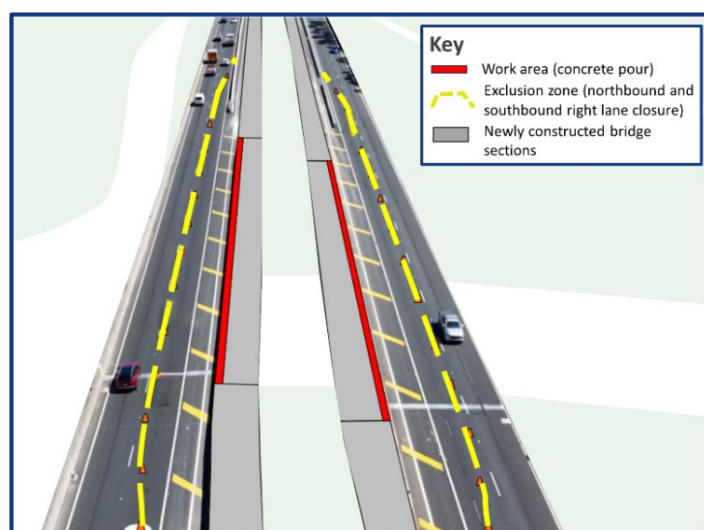
The following traffic changes and speed reductions will be implemented along the M7 Motorway near **Hoxton Park Road Bridge**:

- from **8pm Friday 16 May** to **7am Sunday 18 May**, the northbound right lane will close and the speed limit along the M7 Motorway will be reduced from **80km/hr** to **40km/hr**.
- from **7am Sunday 18 May** to **10pm Sunday 18 May**, the speed limit along the M7 Motorway northbound will be changed to **60km/hr** and the northbound right lane will remain closed.

While lane closures and speed reductions are in place you may not see active construction works. This is because the vibration near the freshly poured concrete must be minimised for a certain period to allow it to set properly.

Please expect traffic delays during these activities, plan your journey and drive carefully. Traffic control will be in place to assist traffic safely around the work sites.

### Location of work areas and illustrative diagram

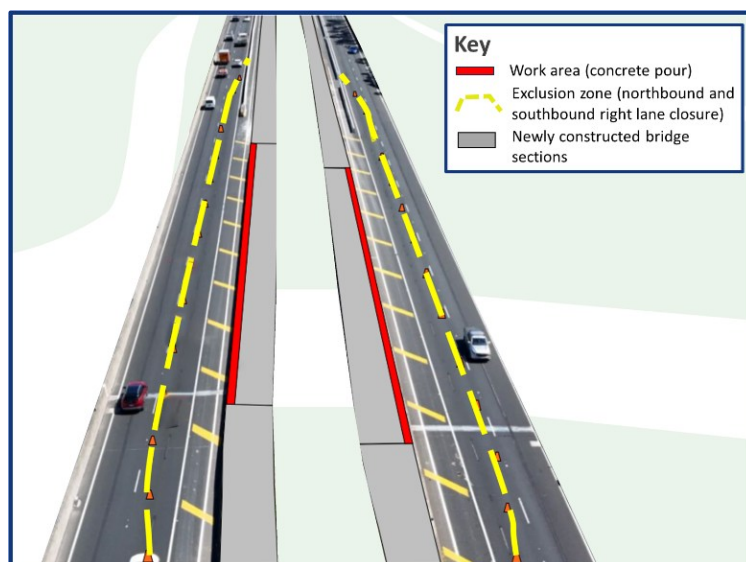


The following traffic changes and speed reductions will be implemented along the M7 Motorway near **Saxony Road Bridge**:

- from **8pm Friday 23 May** to **7am Saturday 24 May**, the right lanes will close and the speed limit along the M7 Motorway will be reduced from **80km/hr** to **40km/hr**
- from **7am Saturday 24 May** to **8am Sunday 25 May**, the speed limit along the M7 Motorway will be changed to **60km/hr** and right lanes will remain closed.

M7 Motorway both northbound and southbound right lane closures will take place at Saxony Road Bridge. Traffic will be maintained in both directions during this work. Please refer to page 1 for detailed work information.

### Location of work areas and illustrative diagram



## Contact us



24/7 project info line **1800 712 712**



**info@m7m12integrationproject.com.au**



**m7m12integrationproject.com.au**



PO Box 98, Kemps Creek NSW 2178



Scan the QR code to stay updated



### Interpreter service

For languages other than English call 131 450  
Arabic • Greek • Hindi • Mandarin • Vietnamese

لطلب خدمة الترجمة الشفهية للغات غير الإنجليزية اتصل  
بالرقم **131 450**

Για υπηρεσίες διερμηνείας σε άλλες γλώσσες εκτός από  
τα Αγγλικά καλέστε το **131 450**

अंग्रेज़ी के अतिरिक्त अन्य भाषाओं के लिए दुभाषिया सेवा  
**131 450** पर कॉल करें

获取英语以外的其他语言口译协助服务可以致电**131 450**

Để có dịch vụ thông ngôn cho các ngôn ngữ khác tiếng  
Anh, gọi số **131 450**