

Construction notification

May 2024

Out of hours work – steel installation on Wilde Avenue

Construction activity is well underway at the Powerhouse Parramatta project site. Work is progressing and night works are required to safely install the next level of steel on the eastern side of the site, adjacent to Wilde Avenue, Parramatta.

Key dates

From Sunday 19 May to Thursday 6 June 2024 (with 2 weeks contingency)

Location

Wilde Avenue, Parramatta

Out of hours work

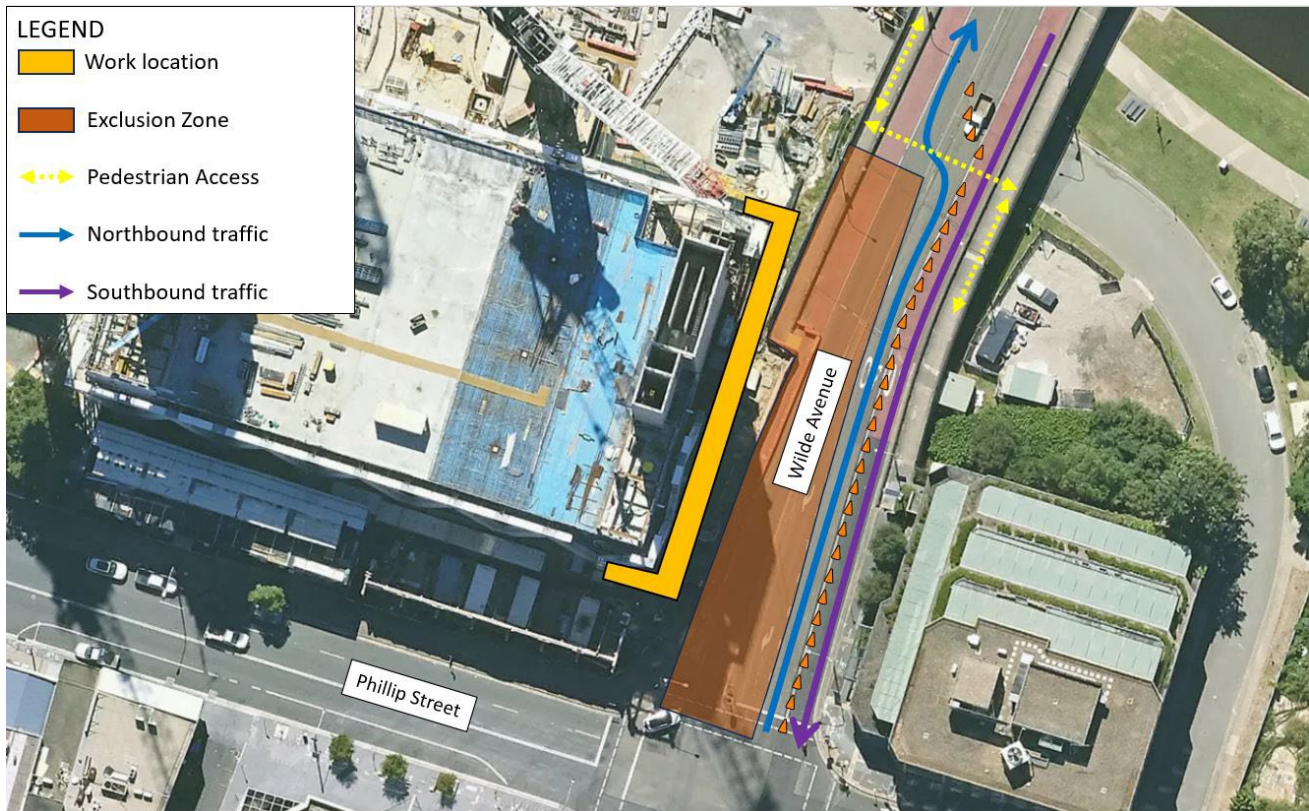
From **Sunday 19 May to Thursday 6 June (with 2 weeks contingency, weather dependent)**, work will continue to install the next level of steel exoskeleton on the eastern side of the Powerhouse Parramatta project site, adjacent to Wilde Avenue. This work is required to be undertaken at night for safety reasons due to the proximity of the work location to the existing adjacent footpath and road.

General night hours will be **7pm to 5am, Sunday to Thursday**. Please note there will be no night works on Friday or Saturday nights or on public holidays.

Activity each night shift will involve:

- Establishing machinery on Wilde Avenue within the exclusion zone
- Use of a tower crane to lift steel into place
- Use of equipment to fasten bolts to secure the steel structure.

At the end of each night shift, the road and footpath will be returned to existing arrangements.



Traffic and pedestrian management

Pedestrian and vehicle access on Wilde Avenue will be maintained at all times. During each night shift, pedestrians and vehicles will be diverted to the eastern side of Wilde Avenue.

Traffic control will be in place to manage these temporary changes on Wilde Avenue throughout each night.

Health and safety

All effort will be made to minimise noisy activities, with a focus on completing noisier activities as early in each shift as possible.

Strict environmental and planning controls are in place to manage noise, dust and vibration.

Construction hours

These out of hours work will take place between **7pm to 5am, from Sunday 19 May to Thursday 6 June 2024** (with 2 weeks contingency, weather dependent).



All other construction activities will be carried out during the approved construction hours:

- Monday to Friday, 7am to 6pm
- Saturday, 8am to 5pm.

More information

We are committed to keeping you informed and regular updates will be provided.

Contact us for construction related questions, feedback or complaints:

 1800 574 931  powerhouse@lendlease.com  insw.com/powerhouseparramatta

Scan the QR code to receive the latest project updates



If you need an interpreter, please call TIS National on 131 450 and ask them to call Infrastructure NSW on 1800 931 109. Our business hours are 8am – 5pm.