



National High Speed Rail



Australia's first high speed railway

The Australian Government is planning a future high speed rail network to connect Brisbane, Sydney, Canberra, Melbourne and regional communities across the east coast of Australia.

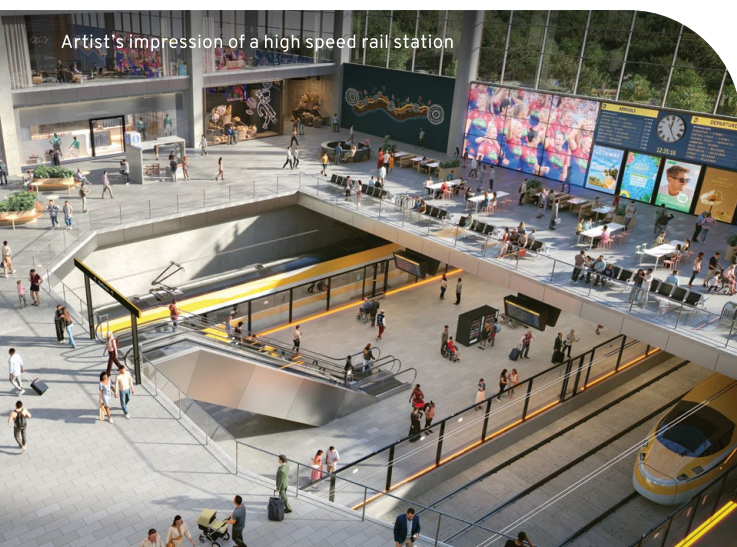
Stage 1 would connect Newcastle to Sydney on a dedicated new railway line with new world-class trains capable of travelling up to 320km/h.

High speed rail stations would be built in central Newcastle, on the Central Coast and in central Sydney. Other stations are also under consideration.

Journeys would be at least twice as fast as now – it would take about an hour to get from Newcastle to Sydney and about 30 minutes from the Central Coast to Newcastle or to Sydney.

As the proposed network expands, covering a distance of more than 1,800 kilometres by 2060, further regions and communities would be connected by high speed rail.

A journey from Canberra to Sydney would take about 90 minutes, while it would take about 4 hours to travel from Melbourne to Sydney or from Sydney to Brisbane.





Why Newcastle to Sydney first

Connecting Newcastle to Sydney with high speed rail has been identified as the potential Stage 1 of National High Speed Rail because of the benefits the project delivers both for the region and for the national economy.

The Newcastle and the Hunter Valley region is Australia's biggest regional economy, generating \$73 billion in annual activity.

The region's population is forecast to grow 22 per cent to 1.3 million people by 2051 while Newcastle to Sydney is the busiest regional rail corridor in Australia with 15 million passengers a year, forecast to reach capacity in the early 2040s.

The Central Coast and Newcastle areas currently support more than 420,000 jobs.

New homes to accommodate growth are expected in major greenfield areas and key centres such as Gosford, Tuggerah/Wyong, Lake Macquarie and Newcastle.

The current Newcastle to Sydney journey time by train and car is about 2.5 hours and road travel is often impacted by traffic accidents. There are 91,000 trips every weekday on the road corridor between Newcastle/Lake Macquarie and Sydney.

Early work

Geotechnical work has been completed between Newcastle and Sydney.

More than 25 boreholes were drilled, including on the Hawkesbury River, to get a broad geological understanding of ground conditions between NSW's two largest cities. This helps determine options for the railway alignment. Due to the topography, an emerging option is for tunnels to be built between the Central Coast and Sydney.





Artist impression

0 : 30

Central Coast–Sydney
Central Coast–Newcastle
in about **30 minutes**

1 : 00

Newcastle–Sydney
in about **1 hour**

320 KM/H

Trains running
up to **320km/h** on a
dedicated new line

Journeys twice as fast as today, with 98 per cent train reliability

One hour's travel time
out of Newcastle gets
you this far.

Wyong
Intercity train

1 hour from central Newcastle



Ourimbah
Car (via M1 Motorway)

1 hour from central Newcastle



Newcastle

► Existing Newcastle to Sydney
railway built in 1880s

► Busiest regional rail corridor
in Australia, moving about
15 million people a year

► Forecast to reach capacity
in the **early 2040s**

► Freight trains often disrupt
passenger services

► M1 Pacific Motorway –
91,000 vehicle trips
a day between Newcastle
and Sydney



Central Sydney
High speed rail

1 hour from
central Newcastle

1 : 00

A journey on National High Speed Rail

The trains

A world-class onboard experience in Standard Class and Business Class, high speed rail will cater for different needs and budgets. Each train, about 200 metres long, would move up to 520 seated passengers – comparable to services in Europe and Asia.

The fares

Fares will be competitive with existing services.

Global success

More than 6,500 high speed trains are currently operating on 70,000km of high speed railways around the world, with another 30,000km under construction.

Dedicated passenger service

Operating entirely separately from existing rail networks, on dedicated new tracks, ensures speed, reliability and operational efficiency – allowing the service to perform at its full potential. It also creates more capacity on existing lines for freight movements.



The stations

As gateways for communities to connect with other regions and cities, Australia's high speed rail stations will be well-connected transport hubs – and more. They'll be places to eat, shop and play, seamlessly connected to other transport options, fully accessible and integrated into surrounding areas.



High speed internet



Food and beverage facilities



Easy circulation, lifts, escalators



Comfortable waiting areas and lounges



Facilities including showers and changerooms



High speed WiFi



Fully accessible



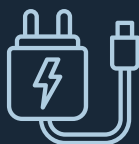
Luggage storage



Quiet zones



Sustainable
railway



Power to charge
devices



Food and beverage
onboard



Pet friendly
areas

HSR NEWCASTLE STATION



The services

The national network will be designed to operate as a two-tier service model, adapted for Australia's diverse needs and modelled on international best-practice.

Intercity services:

High speed, long-distance trains offering express connections between major cities including Brisbane, Sydney, Canberra and Melbourne and catering to travellers who want rapid inter-capital journeys.

Regional services:

Trains with more stops to serve regional centres and intermediate locations, addressing the needs of passengers requiring broader access. This includes servicing regional cities to capital city services and region-to-region services.

Artist impression





Standard Class



Business Class

Have your say

Since August 2024, we've met more than 5,000 people at almost 90 community events across the Hunter Valley, Newcastle, the Central Coast and Sydney.

Our conversations with communities and stakeholders have informed the early work being done by the High Speed Rail Authority.

In late December, the National High Speed Rail Hub was officially launched in Newcastle.

You can come and find out more about high speed rail in Australia at this community information centre, which opens in early 2025. Opening times will be on our website.

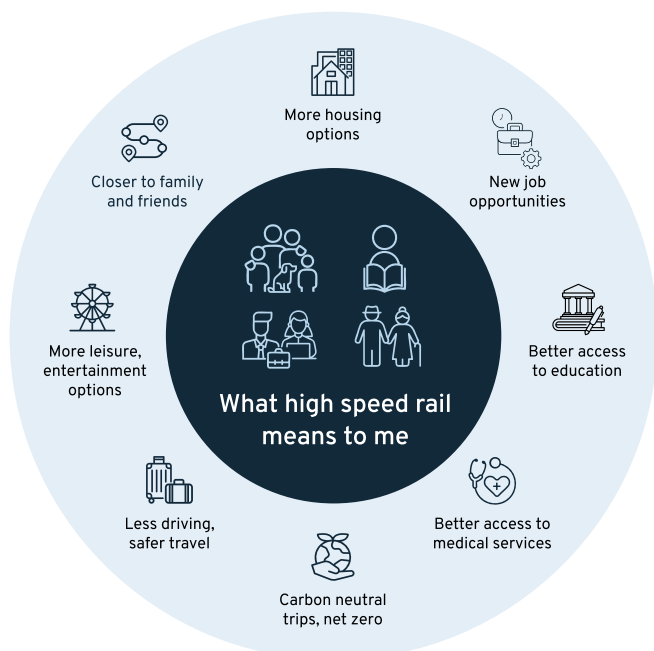


The National High Speed Rail Hub

Making a big country smaller

The benefits of high speed rail

High speed rail will connect Australian regions, cities and communities – delivering generations of opportunities.



Cutting travel times and improving connections will reshape Australia, giving more options for:

- where people choose to live, work, study and play
- how and where companies set up and invest, giving businesses greater access to a workforce and opportunities for new markets
- investment in the Australian economy, including boosting the tourism sector.

Currently, cities and regions on the East Coast operate largely as independent economies. People here mostly live and work in the same region, meaning growth is restricted.

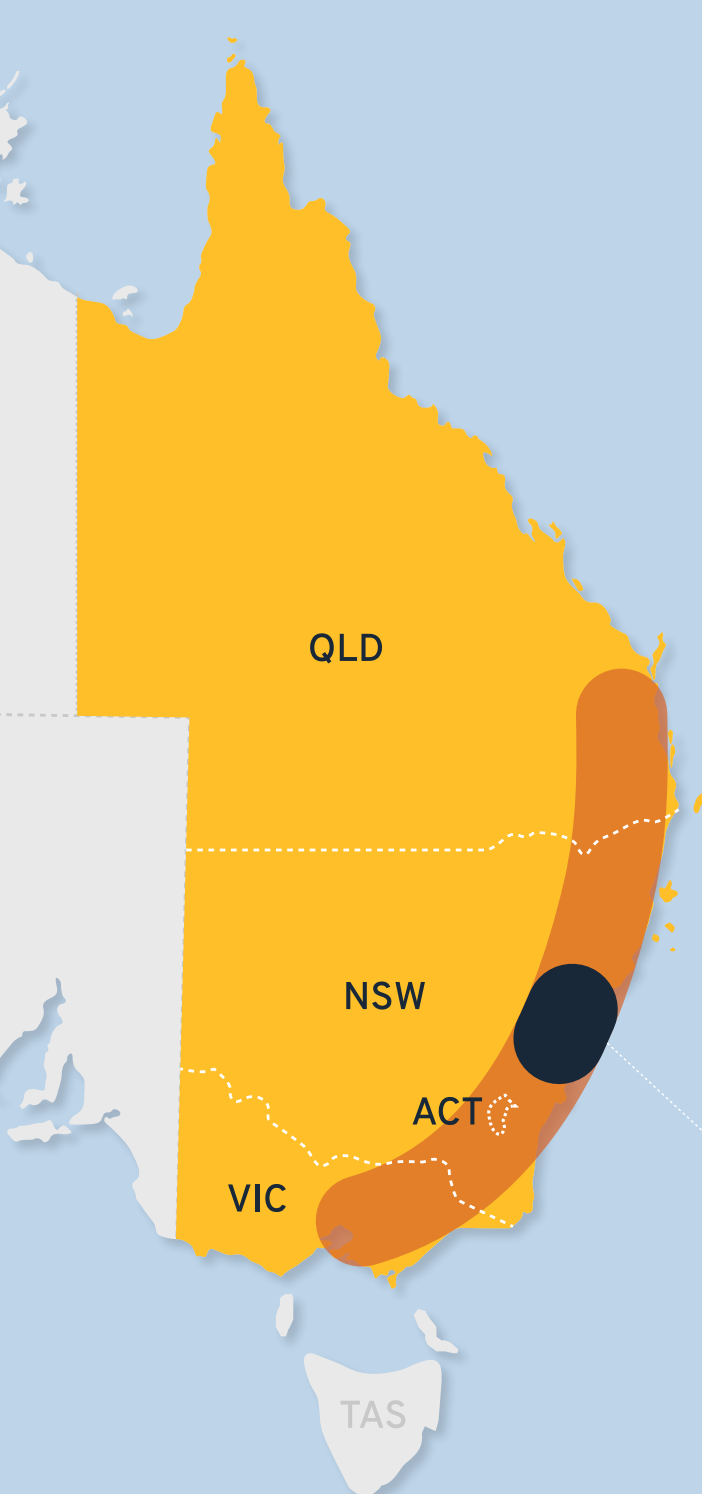
A reliable high speed railway network would connect these cities and regions, overcoming the tyranny of distance. New opportunities include unlocking housing opportunities as well as providing better access to jobs and services and improving people's quality of life.

Artist impression



Explainer: Australia's population challenge – and myths

Australia's growth is outpacing many developed countries around the world. The East Coast's population will increase 33 per cent by 2051, or an extra 7 million people.



East Coast Australia

21.5m
Current population

28.5m
2051 population

↑ 33%

+7m
people

By 2051

11% ↑
United States and
New Zealand

10% ↑
United Kingdom

16% ↓
19 million fewer
people in Japan

East Coast Corridor

60%
of Australian population

2%
of the land mass

104
people per
square kilometre

NEWCASTLE-CENTRAL COAST-
SYDNEY

624
people per
square kilometre

High Speed Rail Countries

United
Kingdom
279/sq km

Japan
339/sq km

France
124/sq km

Spain
95/sq km

Find out
more



Register for updates at our website: www.hsra.gov.au

Community infoline: 1800 958 562 (open 24 hours)

Email: info@hsra.gov.au



Australian Government
High Speed Rail Authority