



JANUARY 2024

Greetings from Sims Metal

Hello Neighbors,

We hope you find these quarterly updates in your mailbox to be helpful. While we have been recycling metal products in Pilsen for over 30 years, we find that many neighbors are not familiar with us, so we would like to keep you informed of our operations and regularly reintroduce ourselves to you.

Sims Metal is a recycling facility on Paulina Street between Blue Island Avenue and the Chicago River. We recycle metal that otherwise might end up in landfills or abandoned on roadsides or in vacant lots. We combine smaller metal scrap items with larger ones, such as end-of-life cars and appliances, that are eventually transformed into new products. We take pride in being a sustainable business and a good steward of natural resources, adhering to all federal, state, and local regulations.

Sims has long been a contributor to the local economy by supplying good-paying, union jobs through Teamsters Local #731, plus we support hundreds of Chicago families who diligently collect scrap metal and recycle it here. We are proud to invest time and money into local charitable causes, such as the Pilsen Pantry, neighborhood churches, and local public schools.

Our construction project to install advanced emission capture and control equipment on our metal shredder is on track to be completed this September. Once operational, the metal shredder at our Pilsen recycling facility will be one of only a handful metal recycling shredders across the country with these advanced controls and it will exceed the stringent emissions criteria mandated by the US EPA and the Illinois EPA.

An independent, third-party environmental engineering firm continues to monitor the air around our Pilsen facility 24/7, and now more than one full year of data has been collected at multiple spots around our fence line. Based on these results, the EPA has posted ([epa.gov/il/sims-metal-management](https://www.epa.gov/il/sims-metal-management)) that dust particles and volatile organic compounds exist at levels **below** those that would cause short-term health impacts, but long-term assessment will continue. Metals, including lead, manganese, chromium, and nickel, have been detected in the monitors, but the EPA has reported that these quantities are also **below** levels that would cause short or long-term health impacts.

Sims Metal is deeply invested in doing the right thing and being a good community partner. Our new advanced emission controls will be a substantial win for Pilsen and the City of Chicago, furthering the cause of environmental justice. We would be pleased to meet with local community groups to engage in further understanding of each other's perspective. You can email me at pilsen.community@simsmm.com or you can also visit us at [simsmm.com/pilsen](https://www.simsmm.com/pilsen) to learn more.

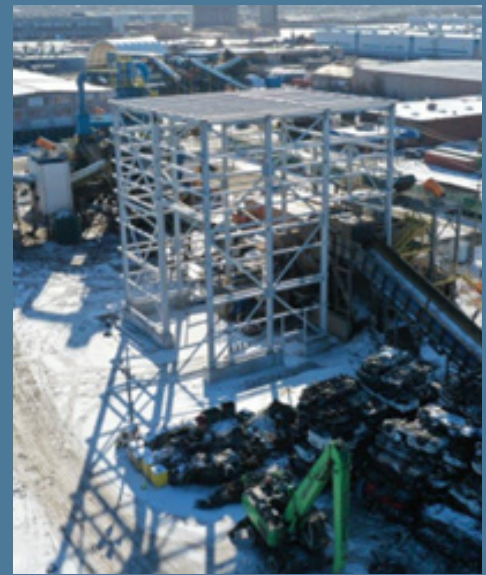


George Malamis
Director of Operations, Sims Metal

Emission Capture and Control Construction Timeline



As this timeline indicates, much of the infrastructure work has been completed for our new capture and control system. We anticipate the system being fully operational after it is tested and approved by regulators in the fall of 2024.



Positive progress! As this January 2024 photo shows, the foundation and iron support structure are nearly completed for the enclosure that will soon surround our metal shredder. This is a significant portion of the larger project to capture and control virtually all future emissions.

Who is managing the air monitors at Sims Metal?

Trinity Consultants, an independent provider of environmental and industrial business solutions that specializes in air quality, is the company that performs air sampling and manages the ambient air monitoring network surrounding our Pilsen facility.

To learn more about their services, visit www.trinityconsultants.com.

Where are the monitors located?

Trinity Consultants maintains five air monitors within the Sims Metal Pilsen facility fence line, which are spaced to ensure complete air sampling independent of which way the wind is blowing.

Air Monitoring Results

[The EPA reviews the air monitoring results that Trinity Consultants records for our Pilsen facility.](#) Here is a summary of their findings, which you can also review at epa.gov/il/sims-metal-management.



PM10 particle readings are all below the EPA's health-based limits.



VOC concentrations are below levels that would cause human health effects from short-term exposure to the air in the area.

Long-term assessment continues.



Lead, manganese, chromium and nickel were detected below levels that would cause short or long-term health impacts.

Long-term assessment continues.

Who is Sims Metal?

Sims Metal is a **recycling facility** on **Paulina Street** between Blue Island Avenue and the Chicago River.

Recycling is essential, and we recycle metal that otherwise might end up in landfills, abandoned at the side of the road, or left in a vacant lot. In fact, 80% of the metal we handle is dropped off by local peddlers who make their living by recycling. **We recycle smaller scrap metal items along with larger ones, such as end-of life cars and appliances**, all of which are eventually transformed into new products.