



Weekend lane closures on M7 Motorway near Aviation Road, Elizabeth Hills

M7-M12 Integration project

April 2025



We acknowledge the Dharug people of the Darug Nation as the Traditional Custodians of the lands on which we work and pay respects to Elders past and present.

The M7-M12 Integration project will support future development growth in Western Sydney by improving travel times and congestion. Once complete, the project will provide direct access to commercial and residential hubs, and the new Western Sydney International Airport.

What work are we doing?

We will pour concrete to join the new bridge deck to the existing bridge deck along the M7 Motorway near Aviation Road, Elizabeth Hills.

Work will include:

- setting up traffic control
- delivery, mobilisation and demobilisation of machinery, equipment and materials to site work areas
- concrete pours for bridges.

Our work schedule

We will work at night and across weekends when traffic volumes are lower. This is to reduce traffic impacts and for the safety of our workers and road users.

The bridge deck concrete pour activities will take place over the following dates, from **8pm Friday evening to 8am Sunday morning**, subject to approval and weather permitting:

- **Friday 4 April to Sunday 6 April 2025**

What equipment will be used?

We will use lighting towers, delivery trucks, light and heavy vehicles, concrete trucks and pumps, hand and power tools, traffic control equipment and vehicles.

Managing our impacts

Some of this work will be noisy. You will see an increase in activity in the area as workers move around the site.

Traffic changes

There will be temporary traffic changes including both northbound and southbound right lane closures, reduced lane widths and reduced speed limits along the M7 Motorway. The traffic changes will occur along the M7 Motorway near Aviation Road. Road users will be notified of traffic changes via variable message signs (VMS) and on-site signage.

During these activities, the following traffic changes and speed reductions will be implemented:

- from 8pm Friday to 7am Saturday, the northbound and southbound right lanes will close and the speed limit along the M7 Motorway will be reduced from **80km/hr to 40km/hr**.
- from 7am Saturday to 8am Sunday, the speed limit along the M7 Motorway will be changed to **60km/hr** and both northbound and southbound right lanes will remain closed.

Please expect traffic delays during these activities, plan your journey and drive carefully. Traffic control will be in place to assist traffic safely around the work sites.

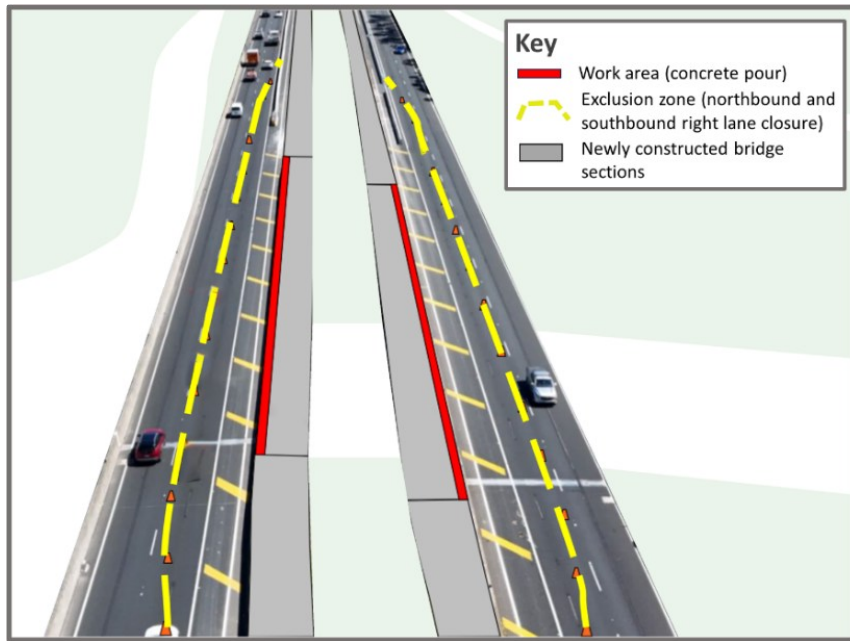
Pedestrian and cyclist access on the shared user path along the M7 Motorway will not be impacted.

For the latest traffic updates, you can call 132 701, visit livetraffic.com, download the Live Traffic NSW app or download the Linkt app and switch on Road Alerts for M7 roadworks.

Location of work areas



Illustrative diagram



Contact us



24/7 project info line **1800 712 712**



info@m7m12integrationproject.com.au



m7m12integrationproject.com.au



PO Box 98, Kempas Creek NSW 2178



Scan the QR code to stay updated



Interpreter service

For languages other than English call 131 450
Arabic • Greek • Hindi • Mandarin • Vietnamese

لطلب خدمة الترجمة الشفهية للغات غير الإنجليزية اتصل
بالرقم **131 450**

Για υπηρεσίες διερμηνείας σε άλλες γλώσσες εκτός από
τα Αγγλικά καλέστε το **131 450**

अंग्रेज़ी के अतिरिक्त अन्य भाषाओं के लिए दुभाषिया सेवा
131 450 पर कॉल करें

获取英语以外的其他语言口译协助服务可以致电**131 450**

Để có dịch vụ thông ngôn cho các ngôn ngữ khác tiếng
Anh, gọi số **131 450**

