

Temporary long-term closure of the Alfred Street off ramp

Warringah Freeway Upgrade

November 2024



Transport for NSW acknowledges the Cammeraygal people of the Eora nation as the Traditional Custodians of the lands on which we work and pays respect to Elders past and present.

We are simplifying the Warringah Freeway, making it safer and easier to use, and more efficient and reliable for the benefit of all road users, including public transport users.

We are continuing work to build the new Alfred Street off ramp and upgrade the Mount Street and Alfred Street North intersection in North Sydney. To complete the work sooner with less impacts and reduce noisy night work, we will implement a long-term closure of the Alfred Street off ramp and a southbound section of Alfred Street North between Kurraba Road and Mount Street.

From 10pm Friday 22 November 2024, access from the Warringah Freeway to the Alfred Street off ramp and southbound access on Alfred Street North from Kurraba Road to Mount Street will be temporarily closed to all traffic until mid-2025, weather permitting.

We thank the community for taking part in our November 2024 Alfred Street off ramp closure survey. Your feedback is important to us and provides valuable insights on potential mitigation measures we can implement while this ramp closure is in place. You can continue to provide feedback on the closure through this survey QR code.

Scan the QR code to complete the short survey.

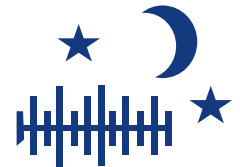


Major community benefits of this closure

We have developed a new proposal for how we will construct the future dedicated bus lane, Mount Street underpass and Alfred Street North overpass structure which would have significant benefits for the community. These benefits include:



Completing work in this area **6 months earlier**



Removing around **90 nights of noisy work**



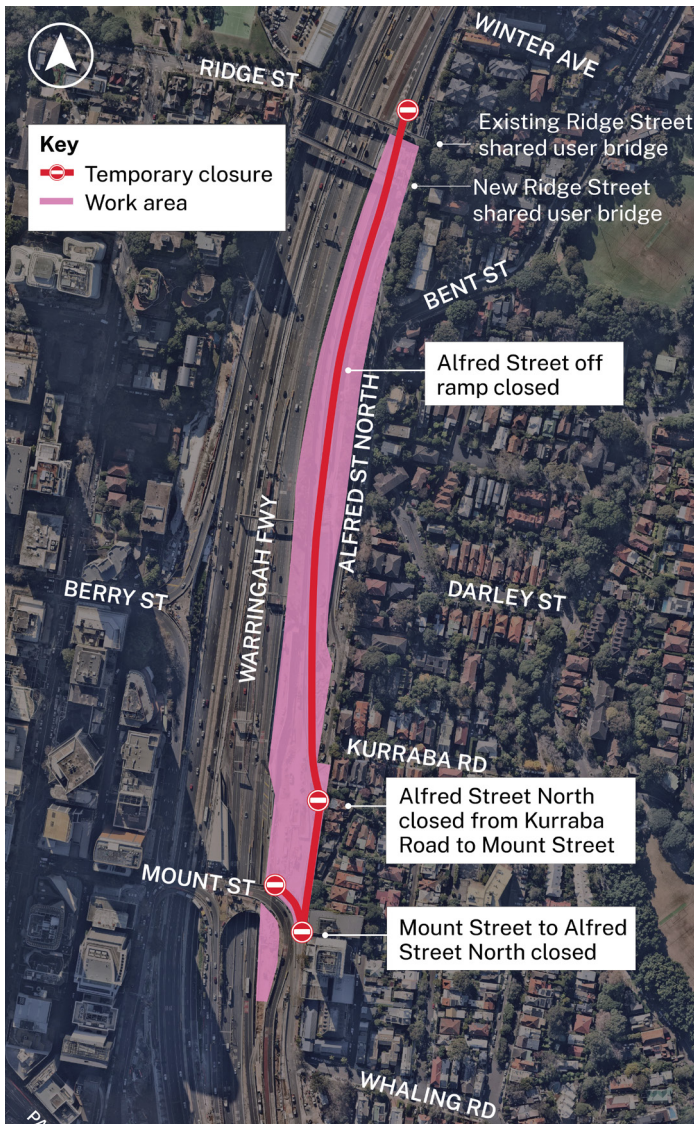
Removing up to **10 weekends of extended work**



Eliminating **5 traffic changes** that would otherwise be needed in this location

To achieve these benefits, we need to implement a long-term temporary closure (24/7) of the Alfred Street off ramp from 22 November 2024 until mid-2025.





Map 1: Work area on Alfred Street off ramp

Planning our work to reduce impacts

In keeping with our commitment to reduce impact to the community where possible, we have been exploring options to construct the new Alfred Street off ramp structure and retaining walls in the most efficient possible way. To reduce the duration of ongoing noise and vibration impacts of this work, we identified an opportunity to temporarily close access to the off ramp 24/7. This temporary closure allows us to set up safe work areas at the off ramp, giving us consecutive day access to carry out work.

What work are we doing?

We will be:

- installing concrete safety barriers, fencing and signage
- relocating and installing utility services
- removing excavated materials and site levelling
- demolishing existing and building new retaining walls and medians
- installing scaffolding, planks and bridge structures
- asphaltting and concreting work
- installing and removing line markings
- installing new street lighting, signage and landscaping.

Temporary traffic changes in North Sydney and Neutral Bay

Temporary traffic changes are required to create more work areas so we can safely continue our work.

From 10pm Friday 22 November 2024, the following traffic changes will be in place until mid 2025, weather permitting:

- access to the Alfred Street off ramp from the Warringah Freeway will be temporarily closed to all traffic
- Alfred Street North from Kurraba Road to Mount Street will be closed to all traffic. Pedestrian access will be maintained.
- southbound traffic along Alfred Street North will detour via Kurraba Road, Neutral Bay for access to Clark Road and High Street
- access to Warringah Freeway via the Mount Street on ramps to Sydney CBD will be maintained.

Motorists are advised to use Pacific Highway and High Street (untolled) for alternative southbound access to Kirribilli and Neutral Bay.



Moderate noise impacts and potential vibrations are expected from this work during the day. The exact impacts will depend on the proximity of your property to the work area. Noisy work includes saw-cutting, rock-breaking, hammering, demolition and hydro-demolition.

Falcon Street off ramp tolls

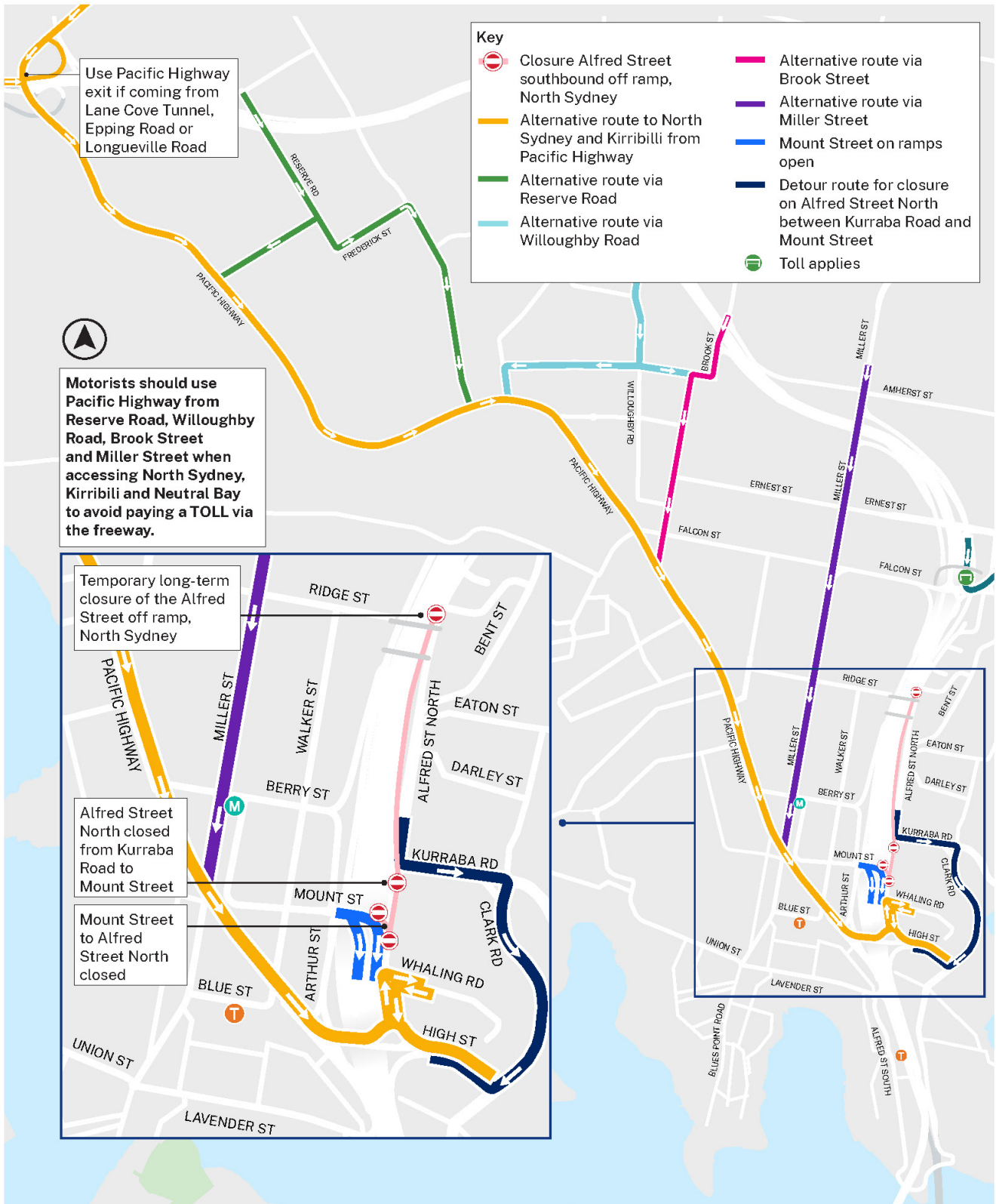
The Falcon Street off ramp will remain tolled for the duration of the Alfred Street off ramp closure. We recommend motorists use the toll free exit at Pacific Highway, Artarmon, when accessing North Sydney, Neutral Bay and Kirribilli.

Alternative access routes

From 10pm Friday 22 November 2024, all traffic travelling to Alfred Street North, Whaling Road and High Street via the Alfred Street off ramp will be required to use alternative routes.

If you need to access North Sydney, Kirribilli or Neutral Bay, please use the Pacific Highway for a toll-free detour. It is expected that this alternative route will take approximately 15 minutes extra travel time at peak periods. Please plan ahead, allow extra travel time, follow the direction of signage and use extra caution while adjusting to your new, temporary route. Visit [livetraffic.com](https://www.livetraffic.com) for the latest updates.

Please scan the QR code to view a map of the available local access routes.



Managing our impacts

Residents may experience periods of high noise throughout this work. The level of impact will vary depending on the proximity to work locations. To minimise the impact of this work we will:

- turn off machinery when not in use
- use acoustic blankets to minimise noise, where feasible
- direct temporary lighting down and away from houses
- fit equipment with devices to minimise noise, particularly non-tonal reversing beepers.

All work will be carried out in line with the project's environmental approvals. All our work zones and equipment laydown areas will be separated from local traffic, pedestrians and cyclists. The equipment we will be using will include excavators, concrete saws, concrete hammers, rock breaking equipment, hydro-demolition saws, mobile cranes, line marking equipment, heavy vehicles including tipper trucks, concrete pumps, concrete and vacuum trucks, light vehicles, water carts, small power tools, elevated work platforms, asphalt compactors, vibratory rollers, generators, road profiling machines, asphalt paving equipment, rock bolting machines and bobcats, kerb paving machines.

We understand this closure is disruptive to you and your journeys to the area. We apologise for the inconvenience and thank you for your patience while we deliver this work as quickly as possible.

Information about the temporary off ramp closure is available online at nswroads.work/wfu-alfredstofferamp

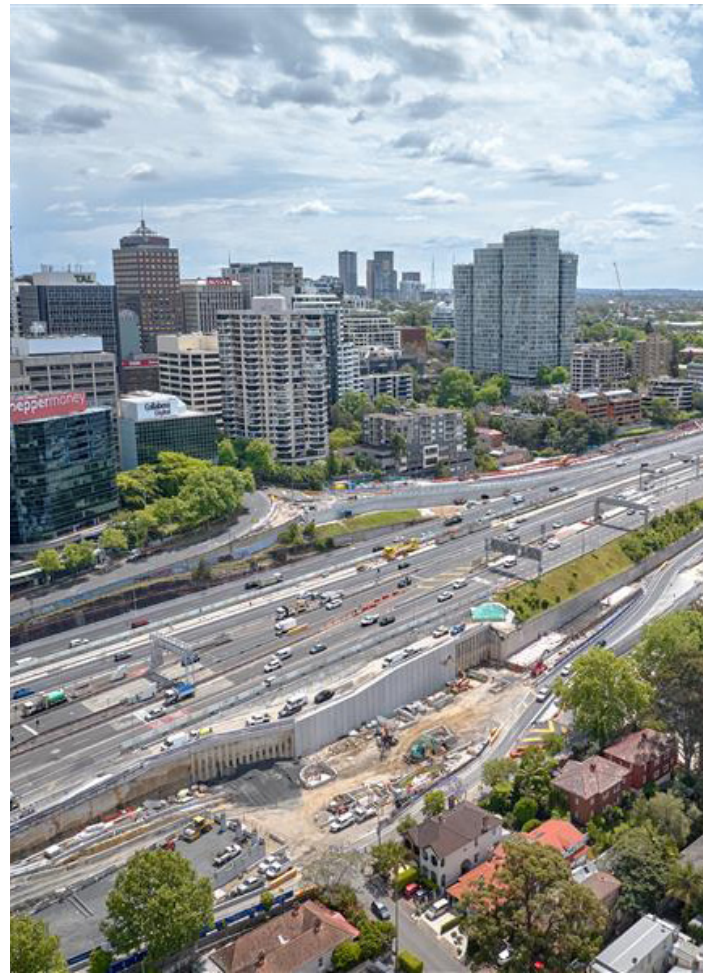


Image: Alfred Street North and Warringah Freeway

For more information on how we manage noise, please refer to our 'Managing Construction Noise fact sheet' available online at nswroads.work/wfuportal or scan the QR code.



Contact us



Project Infoline **1800 931 189**



whtbl@transport.nsw.gov.au

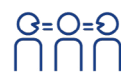


Visit the WFU online portal at nswroads.work/wfuportal



For the latest traffic updates:

Call 132 701, visit [livetraffic.com](https://www.livetraffic.com) or download the app Live Traffic NSW



Interpreter service

For languages other than English call **131 450**
Mandarin • Cantonese • Japanese • Korean
获取英语以外的其他语言口译协助服务可以致电**131 450**
獲取英語以外的其他語言傳譯協助服務可以致電**131 450**
英語以外の言語の通訳サービスは**131 450**までお電話ください。
영어 외 기타 언어 통역 서비스는 **131 450**번으로 전화하세요

www.transport.nsw.gov.au/privacy-statement#Your_Privacy