

West Botany Street Work Fact Sheet

M6 Stage 1

March 2025



Transport for NSW acknowledges the Bidjigal, Dharawal, Gweagal and Gadigal clans of the Eora Nation as the Traditional Custodians of the lands on which we work and pays respect to Elders past and present.

M6 Stage 1 tunnelling in the area impacted by subsidence will recommence in 2025. From March 2025 until the end of 2026 West Botany Street, Rockdale will be reduced to one lane each way between French Street and the northern carpark of Bicentennial Park while the ground is improved.



Image 1: Aerial image facing east showing West Botany Street between Bermill Street and French Street, December 2024

What are the next steps?

From 18 March 2025 until the end of 2026 West Botany Street will be reduced to one lane in each direction for about 280 metres between French Street to just before the Bicentennial Park northern carpark.

We will establish a 100m work zone on the eastern side of West Botany Street, before moving to the western side.

These work areas are necessary to improve the ground so that tunnelling can recommence. The remaining area to be excavated under West Botany Street is approximately 48 meters long and 14 meters wide.

The first step is to temporarily move and upgrade utilities such as gas, telecommunications, drainage, sewerage, lighting. After this, we will start to improve the ground across and along West Botany Street.

What will this mean for you?

Traffic delays and extended travel times during peak periods may occur at times, we would like to thank the community for their patience during this time. **To view the traffic changes, please refer to the map on Page 3.**

- West Botany Street will be reduced to one lane in each direction around the work areas.
- Motorists can use alternate routes via The Grand Parade and Princes Highway.
- Temporary (and some permanent) removal of on-street parking on the western side of West Botany Street, between President Avenue and Green Street.
- Temporary on-street parking removal on the eastern side of West Botany Street, between 444 and 448 West Botany Street.
- Left-in and left-out only at the Bicentennial Park southern carpark.

- Pedestrian access will be available along West Botany Street, on the opposite side of the work area. Pedestrians can cross at the existing signalised intersections at the Bicentennial Park northern carpark and President Avenue, and at the upgraded pedestrian island near French Street.
- Independent utility companies may work at day or night in the area, causing temporary service interruptions. These outages may affect gas, water, telecommunications and electricity. If this is the case, utility providers will notify affected properties.

How will our work impact residents?

Properties near our work areas will experience noise and vibration at times. We will work with residents to notify them of upcoming work and reduce impacts as much as possible.

We will closely monitor noise, vibration, and dust near our sites. We will:

- use construction methods and equipment that cause less vibration and investigate less noisy or vibratory options
- position plant and equipment away from properties, and from each other
- install sound walls or temporary fencing with noise blankets around work areas, using non-tonal movement alarms and noise control kits, such as exhaust mufflers
- provide respite for work above ground by pausing high impact noisy and vibratory activities every three hours
- use water dust suppression and street sweepers at work areas and carrying out air quality monitoring.

What are the work hours?

Our standard construction hours are **7am to 6pm, Monday to Friday** and **8am to 6pm, Saturday**.

We are approved to work out-of-hours from **6pm to 7am**, for up to three weeknights per week, no more than two consecutive weeknights. We will work a maximum of 10 nights per month per zone.

Truck movements and deliveries may occur outside standard construction hours however, we aim to complete this during the day.

How will we keep traffic moving safely?

We will closely monitor traffic and conditions on West Botany Street by:

- using digital message boards and existing overhead signs to communicate planned or live traffic changes, conditions and delays
- regularly monitoring traffic via CCTV, adjusting traffic signal sequencing and updating live traffic to GPS systems and online at [livetraffic.com](https://www.livetraffic.com).
- using additional traffic control personnel and signage on approach to the work area
- monitoring reduced speed limits near live work areas and using stop-go signs or boom gates, where required.

What is ground improvement?

Prior to tunnel excavation recommencing, ground improvement activities will take place on both sides of West Botany Street.

Ground improvement is a common practice used to add structure and create strengthened ground conditions. On West Botany Street and in Bicentennial Park, this will involve jet grouting and deep soil mixing methods that use large augers and piling rigs to construct columns in the ground.

Jet grouting injects grout into the soil using high pressures and rotating jets. The high-pressure jets break up the soil and mix it with the grout to form a hardened mass. The deep soil mixing method uses a high-speed drill with paddles on the end which is inserted into the ground and blends existing soils with cement.

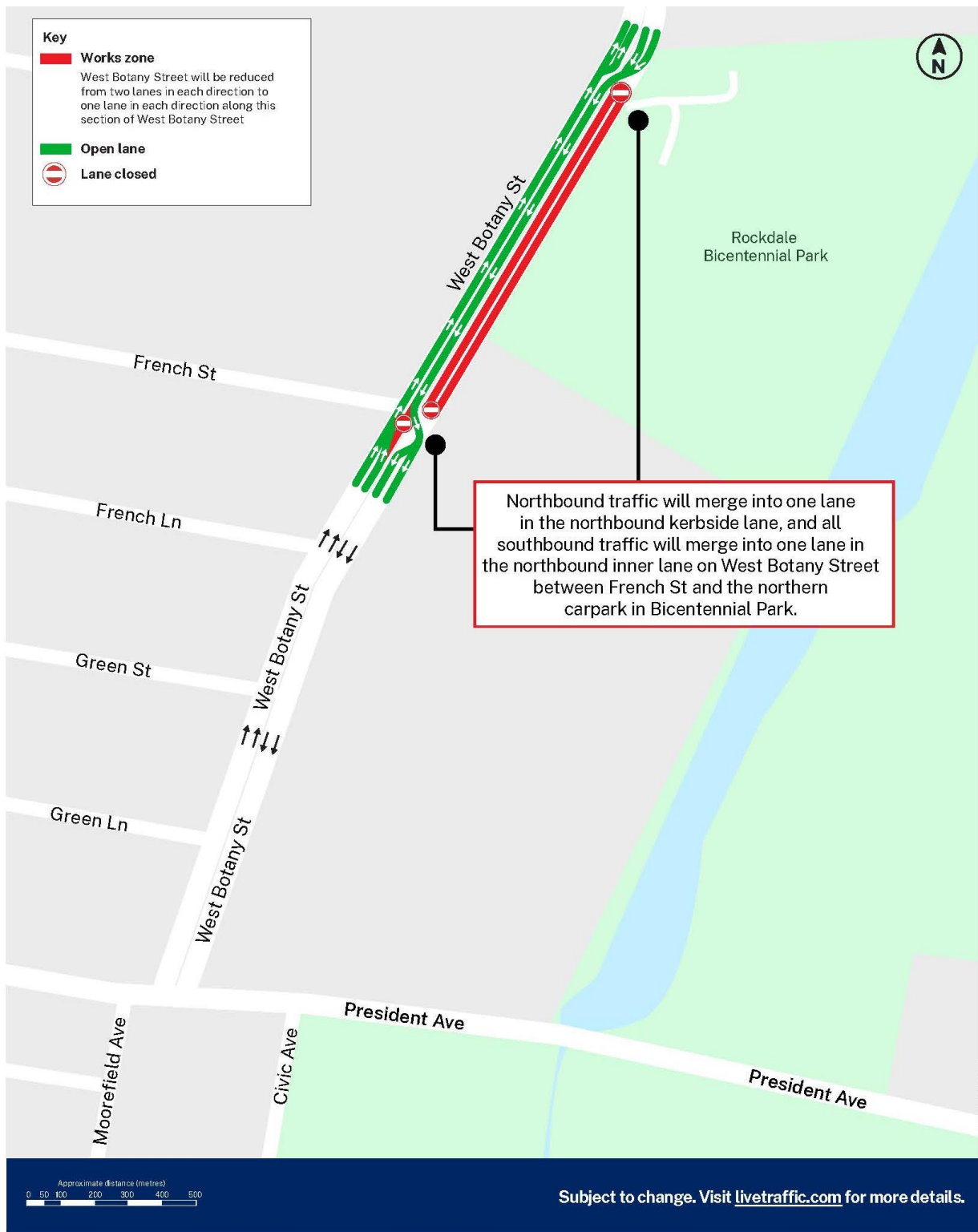
The columns will overlap to form a reinforced block of strong ground that extends down from the surface and is designed to address the unique demands of tunnel excavation.

To view the full tunnel alignment and to learn more about tunnel depths or proximity to your home, type your address into our interactive tunnel tool map at nswroads.work/M6portal.

Subscribe to our email updates



To receive updates about the *West Botany Street Work*, we encourage you to subscribe to our email distribution list. Scan the QR code to receive notifications and keep up to date on the latest information and Community events.



Contact us



Project Infoline and 24-hour Construction Response Line **1800 789 297**



info@M6Stage1.com.au



PO Box 7261 Alexandria, NSW 2015



Visit the online portal go to nswroads.work/M6portal



Interpreter service

For languages other than English call 131 450
Arabic • Greek • Hindi • Mandarin • Vietnamese

لطلب خدمة الترجمة الشفهية للغات غير الإنجليزية اتصل
بالرقم **131 450**

Για υπηρεσίες διερμηνείας σε άλλες γλώσσες εκτός από
τα Αγγλικά καλέστε το **131 450**

अंग्रेजी के अतिरिक्त अन्य भाषाओं के लिए दुभाषिया सेवा
131 450 पर कॉल करें

获取英语以外的其他语言口译协助服务可以致电**131 450**

Để có dịch vụ thông ngôn cho các ngôn ngữ khác tiếng
Anh, gọi số **131 450**