

Building together: year-end construction update

M6 Stage 1

Community Update | Summer 2023/24



A year of achievements: thanking our community

As we prepare to farewell 2023, it's a good time to reflect on the significant milestones achieved during the year. Our progress would not have been possible without your support and we thank you for your patience and consideration during construction of M6 Stage 1.

Tunnelling from Arncliffe to Bicentennial Park

This year, we reached and then surpassed 50% of excavation of the tunnels! Waterproofing, drainage and installation of services inside the tunnels is also underway.

Road pavement is starting to be installed in tunnel sections near Arncliffe – a major step in getting the M6 Stage 1 closer to completion.

At Bicentennial Park, the large acoustic shed and shaft excavation has been completed and tunnelling from this location will soon commence.



Tunnelling at our Arncliffe site, September 2023

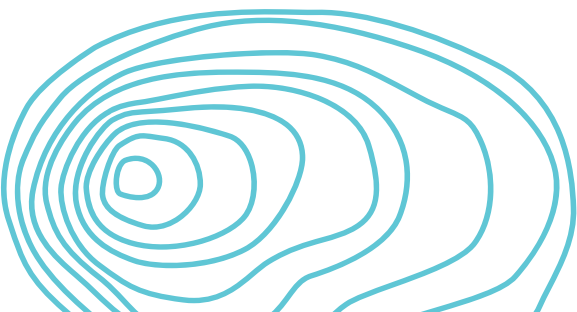
Tunnel portal at President Avenue

A major milestone has been achieved with completion of the construction of the underground structural walls. This accomplishment has allowed us to start excavation to shape the tunnel portal.

Three substantial concrete pours for the roof of the tunnel portal were completed using 3000m³ of concrete! These milestones mark significant progress for the tunnel's entry and exit on President Avenue that commuters will travel through in the future.

Motorway Operations Centres

Work at our Arncliffe Motorway Operations Centre is making steady progress. Activities include construction of a water treatment plant, electrical fit-out of the substation building, and works within the ventilation building. At our Rockdale Motorway Operations Centre, works to build the substation, ventilation shaft and deluge tanks continues. These centres are essential to the daily operation of the tunnel once open. We have also successfully completed piling here, utilising a unique raked piling method. Piles were constructed on an angle rather than vertically into the ground, due to the tunnel alignment running directly underneath the complex.



Permanent power supply

Work to run power seven kilometres underground from the Canterbury substation to the new Rockdale Motorway Operations Centre commenced this year, and we've reached 75% completion for trenching. We've also installed 25 connection and communication pits, six joint bays, with cable pulling and permanent road restoration works commencing shortly.

Shared pedestrian and cyclist pathway

Our new five-kilometre shared pedestrian and cyclist pathway is continuing to progress. Preparations for the new President Avenue pedestrian and cyclist bridge are in full swing with piling completed and steel fabrication and construction of supporting columns continuing. Key achievements also include completion of boardwalk foundations between Kings Road and Bay Street.

We endeavour to minimise the impacts of construction on our community as much as possible and once again, thank you for your ongoing support.



Shared Pedestrian and Cyclist Pathway, November 2023



Rockdale Motorway Operations Centre, November 2023

Shop local

We encourage the community to shop locally and support small businesses year round.



UFC GYM Rockdale

Located at 466 West Botany Street, Rockdale, UFC GYM is a health & fitness club with it all under one roof! Start learning Martial Arts, train functional fitness or get your weights fix! Join before end of Jan 2024 & get your first month FREE! Call (02) 9556 1411.



PetO

Located at 466 West Botany Street, Rockdale, PetO is Australia's largest dog and cat store! With plenty of parking, great choice, lowest prices and an experienced team, there's no other place to go! Call (02) 9588 111.



Fruit World

Located at 60 President Avenue, Kogarah, Fruit World offers a wide range of fresh fruit and vegetables, as well as continental groceries at competitive prices. Open seven days a week, call (02) 9587 9840.



Pino's Dolce Vita

Located at 45 President Avenue, Kogarah, Pino's are a butcher, café, and deli serving Sydney since 1978 with top quality meat, authentic Italian cooking, and eight generations of culinary skill and knowledge. Call (02) 9587 4818.



Benny and the Pets

Located at 41 President Avenue, Kogarah, Benny and the Pets are the veterinary professionals keeping your pets healthy and happy with love and care for over 20 years. Call (02) 9588 4588.



Sydney Elite Health Group

Located at 51 President Avenue, Kogarah, Sydney Elite Health Group are a health, wellness and performance collective helping their clients move better and smile more. Call (02) 9587 8566.



Brix Property Agents

Located at 49 President Avenue, Kogarah, Brix Property Agents is a small, dynamic real estate agency specialising in the Residential and Commercial markets. Peter Mandile is Licensee in Charge, call (02) 8317 5428.



- KEY**
- UFC GYM and PetO
 - Fruit World
 - Pino's Dolce Vita and Benny and the Pets
 - Sydney Elite Health Group and Brix Property Agents
 - Sammy's Restaurant and Espresso Me
 - The Souvlaki Shop and Lady Gnarbo



Sammy's Restaurant

Located at 168 President Avenue, Brighton Le Sands, Sammy's serve delicious Lebanese dishes for lunch and dinner with freshly cooked charcoal chicken and meats, with halal, vegetarian, and gluten free options available. Call (02) 9553 7224.



Espresso Me

Located at 168 President Avenue, Brighton Le Sands, Espresso Me serve their unique blend of the best tasting coffee in Sydney! Made with passion and dedication for their amazing guests. Drop by for your daily cuppa and grab a gourmet sandwich or flaky pastry. Call (02) 8034 2985.



The Souvlaki Shop

Located at 170 President Avenue, Brighton Le Sands, The Souvlaki Shop is a family-owned start-up providing the local community with fresh souvlaki, a variety of high-quality meats, and authentic Greek homemade meals and dips. Call 1800 62 5252.

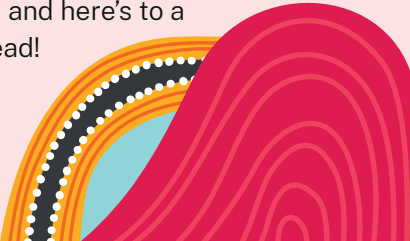


Lady Gnarbo

Located at 170 President Avenue, Brighton Le Sands, Lady Gnarbo caters to all your end of year gifting needs. Enjoy a 50% discount on all giftware until 23 December 2023 (*excludes flowers, floral arrangements, plants and wreaths). Call (02) 8964 1635.

Our best wishes and thanks to you

We would like to wish our local community, a joyful and safe festive season, from all of us on the M6 Stage 1 Project team. We hope your holidays are filled with peace, warmth and happiness, and here's to a bright year ahead!





Spotlight on success: meet Karen, permanent power supply supervisor

Karen is a remarkable woman with 12 years of construction industry experience under her belt and she recently became the first female supervisor for the M6 Stage 1 project.

As night shift supervisor for the Permanent Power Supply (PPS) works, Karen oversees activities to continue to meet design and quality standards.

What Karen finds is most rewarding is the people she works with. She believes in the power of trust and mutual respect, emphasising the importance of her team knowing that she understands the work they do and that she has faith in their abilities.

Despite the rewarding aspects of her work, Karen does face challenges. Her approach to leadership includes addressing issues as they arise, facing them head-on, and prioritising open communication.

Karen has broken through the gender barrier in a male-dominated field, and has also proven that strong relationships, trust and direct communication lead to success in the construction industry. Karen is not just building infrastructure; she is undoubtedly a trailblazer and an inspiration to us all, paving the way for future generations of women in construction.

Join our Air Quality Community Consultative Committee!

We have a vacancy on our Air Quality Community Consultative Committee (AQCCC) and are seeking expressions of interest from the community located near our Arncliffe ventilation facility on Marsh Street.

The AQCCC meets about four times a year. The committee shares feedback and provides advice on behalf of the community, on matters relating to air quality monitoring. For more information, and to apply to join, please head to our website at nswroads.work/M6portal by Sunday 10 February 2024.



We want to hear from you

To help us understand your interest in the M6 Stage 1 project and how we can effectively communicate and engage with you, scan the QR code and take part in our latest survey.



The survey closes on 31 January 2024. It takes approximately four minutes to complete.

Our holiday work schedule

Most of the M6 Stage 1 team is taking a break from **5pm, Friday 22 December 2023**, returning on **Monday 8 January 2024**. No high impact works are scheduled during this period but there will be minor activities continuing at some sites.

The Community Information Centre will also be closed, but for urgent assistance during the break, you can continue to reach us on our **24/7 information line - 1800 789 297**.

Is it a bird? Is it a plane? No, it's two tower cranes!

To mark the installation of two tower cranes at our Rockdale Motorway Operations Centre site on West Botany Street, we asked local students to get creative and participate in our Name the Crane competition.

It was wonderful to see over 100 unique and thoughtful entries submitted from primary and secondary students in the Bayside local government area. Our two winners, Paris and Nicholas each received a \$50 e-gift voucher and were invited onto site to take photographs with the cranes that they successfully named **Rocky 3** (combining the suburb Rockdale and the site name MOC3) and **Emma Six** (a clever reference to M6). Two runners-up received a copy of the Australian book, 'I Want to be an Engineer,' by Samantha Dungey. Thank you to all the students who entered the competition, it was very difficult to choose the winners!

From classroom to construction site – engaging with schools on the M6

One of our project goals on the M6 Stage 1 is to leave a positive and lasting legacy for the community.

With that in mind, we have been exploring ways we can work with local schools to share knowledge about our work and our long-term vision. We aim to introduce students to different aspects of a major construction project; from engineering to environment, quality and safety, and everything in between. If you are a local parent, teacher or student and you are interested in learning more about this, please contact us. We can then liaise with your local school to discuss and design a learning program that suits your school's curriculum.



Competition winners and runner-up with our MOC3 engineers



Paris successfully named the small crane Emma Six

Contact us



Project Infoline and 24-hour Construction Response Line **1800 789 297**



info@M6Stage1.com.au

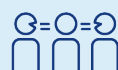


PO Box 7261 Alexandria, NSW 2015



Visit the online portal go to **nswroads.work/M6portal**

www.transport.nsw.gov.au/privacy-statement#Your_Privacy



Interpreter service

For languages other than English call **131 450**
Arabic • Greek • Hindi • Mandarin • Vietnamese

لطلب خدمة الترجمة الشفهية للغات غير الإنجليزية اتصل
بالرقم **131 450**

Για υπηρεσίες διερμηνείας σε άλλες γλώσσες εκτός από τα Αγγλικά καλέστε το **131 450**

अंग्रेज़ी के अतिरिक्त अन्य भाषाओं के लिए दुभाषिया सेवा
131 450 पर कॉल करें

获取英语以外的其他语言口译协助服务可以致电**131 450**

Để có dịch vụ thông ngôn cho các ngôn ngữ khác tiếng Anh, gọi số **131 450**