



Transport for NSW is delivering the Western Harbour Tunnel and Warringah Freeway Upgrade projects – making it faster, easier and safer to get around Greater Sydney. Main works on the project have started. Throughout planning and delivery of our works we are committed to minimising the need to remove trees and vegetation. Planning approvals require us to replant two trees for every one removed and we will replace trees progressively throughout the work.

Minimising impacts on trees

Our preference is to retain vegetation by designing work where possible and seeking qualified arborist advice to reduce impacts. This is common across infrastructure projects including some early work on the Warringah Freeway Upgrade project where the design has been managed to reduce tree impacts. For example, underground utility relocation works in some areas have been managed to avoid the need to remove or impact trees by designing the work to avoid cutting through tree roots.

Designing to avoid impacts on flora and fauna

Our approach is firstly to design the project to avoid or minimise the need to remove trees. If a tree does need to be removed during the work, it will be inspected by a qualified arborist including its location, size and type of tree. In addition, a qualified and experienced ecologist will carry out a fauna survey before work takes place and is available to assist with relocating any identified fauna.

Our approach to tree management will assist us in implementing a tree replacement program as the project progresses. We will return as many trees as possible in close proximity to the original location, in keeping with the existing biodiversity and landscape in the area.

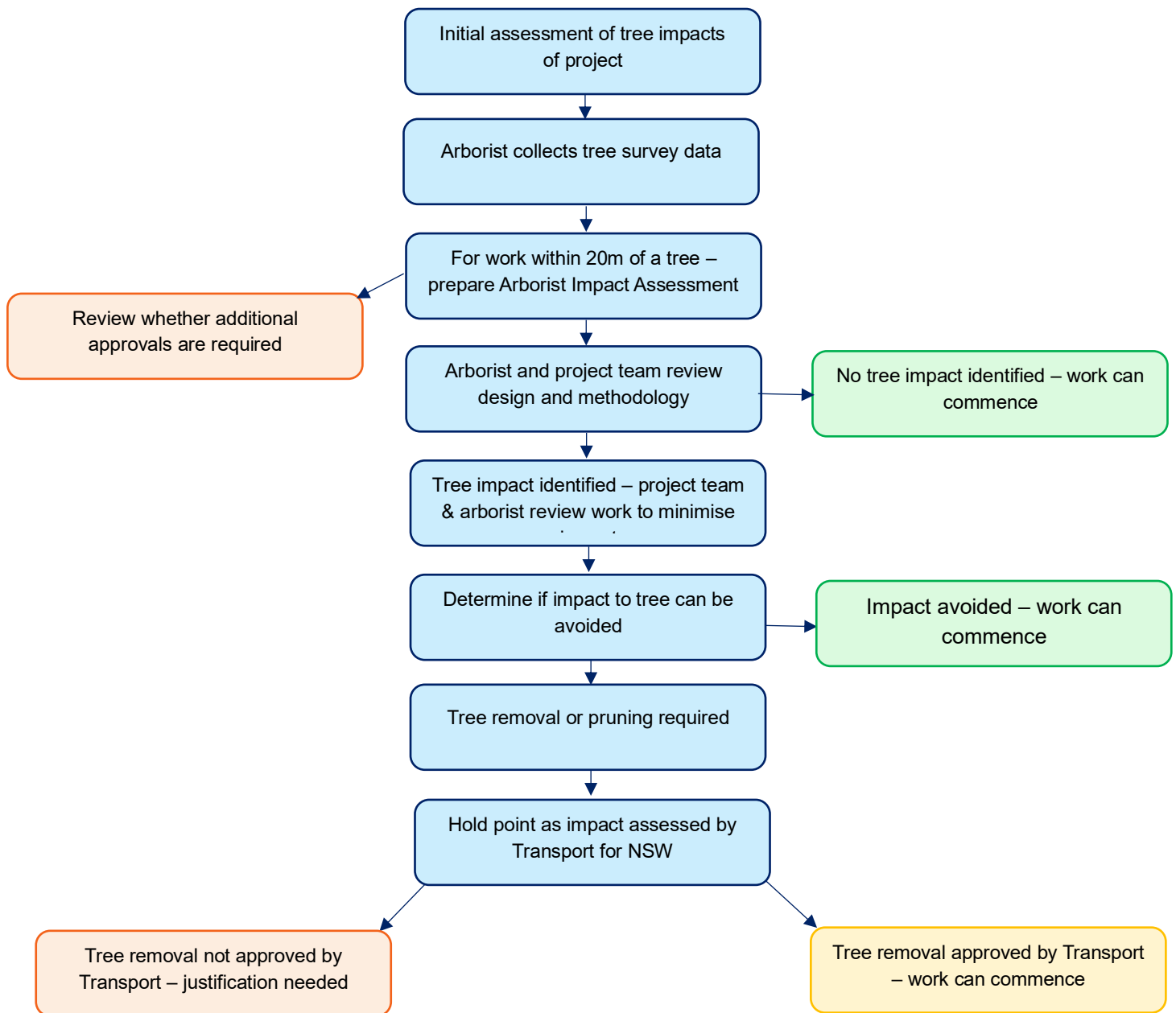
Process before a tree is removed

Transport, its project teams and independent arborists work through a rigorous and comprehensive process to ensure all options have been investigated to avoid or reduce tree impacts. For example, even if a tree is impacted by construction work, the project teams may be able to prune trees rather than remove them.

Removing trees is the last option considered. Where trees are removed, they will be replaced in line with the project approvals.

Diagram 1 shows the detailed process Transport and the project teams carry out before a decision is made to remove a tree or trees.

Diagram 1 – Tree impact review process



For more information

For more information about our project, please visit nswroads.work/wfuportal, call 1800 931 189 or email whtbl@transport.nsw.gov.au
Customer feedback
Transport for NSW, Locked Bag 928 North Sydney NSW 2059

Making a complaint about our work

To make an inquiry or a complaint about the project, you can call our community information line, which is available 24 hours a day and is attended during the project operation hours. Inquiries and complaints may also be received by the project email and by post.



Translating and interpreting service

If you need help understanding this information, please contact the Translating and Interpreting Service on 131 450 and ask them to call us on 1800 931