

Planned out of hours work

Newcastle Inner City Bypass – Rankin Park to Jesmond

June 2025



Transport for NSW acknowledges the Awabakal people of the Awabakal Nation as the Traditional Custodians of the lands on which we work and pays respect to Elders past and present.

The Australian and NSW governments are investing in the Rankin Park to Jesmond section of the Newcastle Inner City Bypass.

Work is continuing on the 3.4 kilometre section of the bypass. Transport for NSW has engaged Fulton Hogan to finalise the design and construct this section of the bypass.

What work are we doing?

We will be carrying out general road and bridge construction including concrete pouring of structural elements. Our work at Jesmond also includes continued drainage work to install a new culvert and pipes, utility relocations including electrical work and permanent street lighting, road pavement construction, short-term road closures as well as modifications to the traffic control systems to adjust traffic flow.

When and where we'll be working

The work will occur along the length of the bypass from the northern interchange on Newcastle Road and Main Road, Jesmond to southern interchange on Lookout Road and McCaffrey Drive at New Lambton Heights. Additional work will occur in Jesmond Park and near John Hunter Hospital.

Day work will be carried out **Monday to Friday between 7am and 6pm** and **Saturday from 8am to 5pm**. Work will also be carried out at the southern interchange on **Sundays 8am to 5pm**. No work will be carried out on public holidays.

Work will be carried out in or next to live traffic lanes or require the night-time isolation of services, so out of hours is the safest way to conduct this work.

Night work will be carried out up to **five nights** per week, **between 6pm and 7am**.

What will this mean for you?

During night work there will be traffic control on site, temporary lane closures, potential detours and machinery operating adjacent to or in the road lanes. If detours are required additional notifications will be issued to the community and stakeholders.

Please take care, keep to the signposted speed limits and follow the direction of traffic controllers.

We work outside standard construction hours to:

- Improve safety by minimising the interactions between road users, pedestrians and workers
- Minimise delays and journey times for motorists and businesses.

Managing our impacts

There will be machinery and other plant and equipment working in different areas throughout the night work. The machinery and equipment generate light, noise, and vibration. We will make every effort to minimise these impacts by:

- Turning off machinery and vehicles when not in use
- Using non-tonal reversing alarms
- Positioning of machines and directing temporary lighting down and away from homes
- Planning activities close to residents within standard construction hours and scheduling noisy activities earlier in the night, where possible
- Monitoring noise to manage any potential impacts and adjusting our work, where possible.

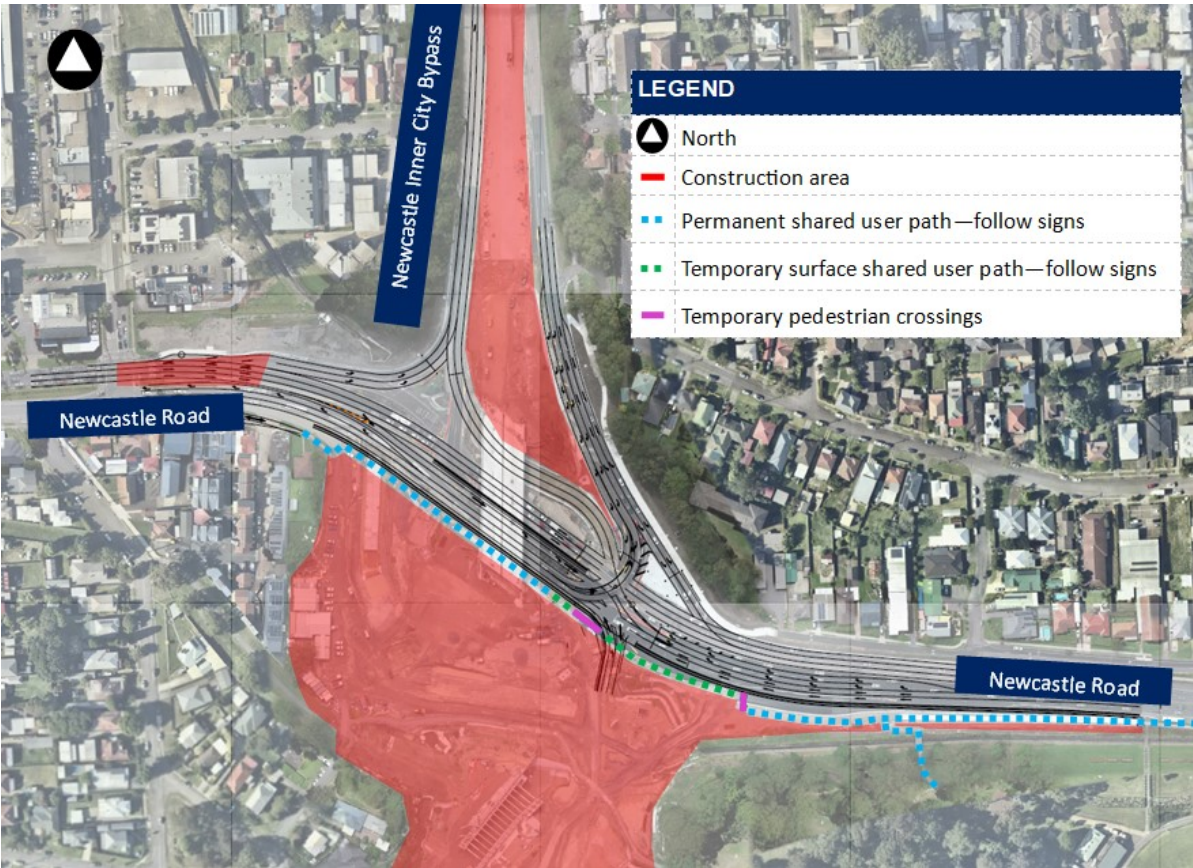
Noise levels will be moderate. When noise is higher than moderate levels, directly affected residents will be contacted and advised of the potential impact and what we are doing to minimise disruption during the work.



Planned out of hours work at Jesmond – Sunday 15 June to Monday 14 July

In this area, day work will be carried out **Monday to Friday between 7am and 6pm** and **Saturday from 8am to 5pm**. Night work will be carried out **Sunday to Thursday between 6pm and 7am**, as required. No work will be carried out on public holidays.

Out of hours work activities	Equipment
<ul style="list-style-type: none">• Pavement/road furniture construction• Stormwater drainage construction• Landscape and vegetation maintenance• Urban design and artwork installation on bridge structures• Installation of noise wall posts and acrylics• Service investigations and relocations• Trucks moving equipment between locations including deliveries of plant and materials• Lane closures near project area, potential detours, traffic control set up and pack up• Installation of temporary work and support structures to facilitate and protect new installations or excavations• Steel arch bridge delivery and installation• Earthworks and pavement.	<ul style="list-style-type: none">• Asphalt paver, shuttle buggy, road mill, rollers• Street sweepers, excavators, hammers, tippers, concrete trucks, rollers, compactors, graders, dozers, bobcats, posi-tracks, watercarts, dump trucks, auger and kerb machines• Trucks for line marking and removal, barrier install and removal• Hand-held compactors, carpentry tools and concrete tools• Trucks and light vehicles, including rigids, watercarts and sweepers• Lighting towers and generators• Shoring during excavations including sheet piling, shoring boxes, and steel plates• Concrete road saws and road profilers• Elevated work platforms, mobile cranes, and borers• Vacuum trucks• Concrete pumps, concrete trucks, and concreting tools• Cranes being delivered, installed, and dismantled• Oversized vehicles for deliveries.



This is an artist impression only and is not to scale.

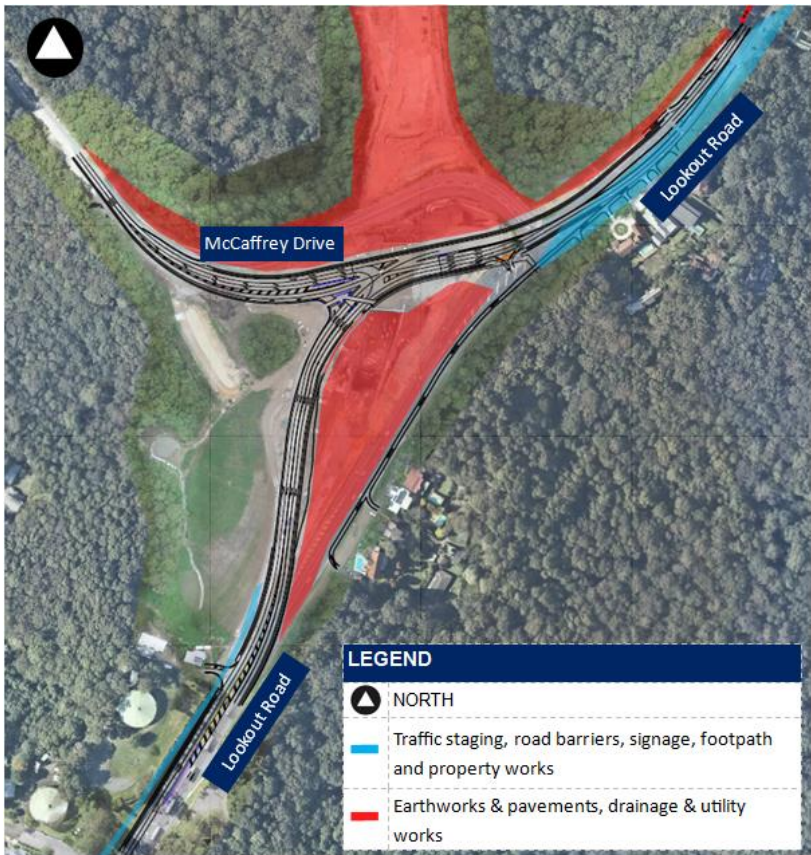
Planned out of hours work at New Lambton Heights – Sunday 15 June to Monday 14 July

In this area, day work will be carried out **Monday to Friday between 7am and 6pm** and **Saturday to Sunday between 8am and 5pm**. Night work will be carried out up to **five nights** per week, **between 6pm and 7am** as required. No work will be carried out on public holidays.

Out of hours work activities
<ul style="list-style-type: none">• Earthworks, pavement, footpath, and road furniture and signage construction• Service investigations and relocations• Stormwater drainage installation• Landscape and vegetation clearance and maintenance• Lane closures near project area, traffic control set up and pack up• Traffic management for activities including asset maintenance and road cleaning• Trucks moving equipment between locations including deliveries of plant and materials.
Equipment
<ul style="list-style-type: none">• Mobile cranes, concrete pumps, concrete trucks, water pumps and drill rig and required earthworks plant• Elevated work platforms, kerb machines, crane borers and concrete deliveries• Cranes delivered, installed, used and dismantled, oversized vehicles for deliveries• Traffic control system modifications including set up and pack up• Tracked and wheeled excavators and other earth moving equipment such as bulldozers and graders• Jackhammer, hammer drill, concrete saw, auger machines• Trucks, including rigids, watercarts, sweeper• Vacuum truck for non-destructive digging• Backhoe, bobcat, skid-steer loader, roller• Seal and aggregate trucks, rollers• Compaction equipment and concrete vibrators, lighting towers and pumps• Asphalt paver, profiler, and support vehicles• CCTV, survey, pole borer lifter and borer machine, trenchless underground boring (horizontal directional drilling rig).



For more information about the project visit nswroads.work/rp2j.
Thank you for your patience during this important work.
You can scan the QR code to visit our interactive portal and learn more about the project as well as register for e-updates.



This is an artist impression only and is not to scale. Alignment is based on the traffic switch, which at time of printing was scheduled to occur mid June, weather permitting.

Planned out of hours work from June 2025 to August 2025

Day work will continue to be carried out **between 7am and 6pm from Monday to Friday**, and **Saturday between 8am and 5pm**.

Night work will be required **between 6pm and 7am, five nights per week**, weather permitting. No work will be carried out on public holidays.

Out of hours work activities – five nights per week	Equipment
<ul style="list-style-type: none"> Temporary lane closures, detours, lane realignments Removal and installation of line road pavements, kerbs, footpaths, medians, retaining walls, road signage, street furniture, lighting, line marking, and asphaltting Drainage work including removing existing and installing new stormwater pits, stormwater pipes and box culverts, connection to services at Jesmond and Rankin Park Utility work, service investigations, removal and installation of power, street lighting, water, communication lines and traffic control signals Fencing installation, modifications, installing site accesses, car parks, vegetation removal and clearing activities, surveying work Hauling of material across McCaffrey Drive Implementation of new, and relocation of existing site gates on Lookout Road and McCaffrey Drive Backfilling of structures and delivery of materials south of McCaffrey Drive Installation of artwork on bridge structures Earthworks and pavement construction Vegetation clearance and maintenance as required Steel arch bridge delivery and installation. 	<ul style="list-style-type: none"> Concrete works, including deliveries, concrete tools, pumping and placement Excavators, hammers, tippers, rollers, compactors, rollers graders, dozers, bobcats, watercarts, dump trucks Road kerb machines, road profilers, concrete saws, asphalt pavers, profilers, sealing equipment Traffic control, line marking truck, grinder, water blaster Carpentry, concrete, and electric tools, chainsaws, bore hole drills Franna cranes, Hiab vehicles, elevated work platforms, vacuum excavation Survey equipment, trucks, and light vehicles Lighting towers and generators Asphalt pavers, profilers, sealing equipment Pumps, dewatering equipment, under boring machines Shoring of excavations including sheet piling, shoring boxes, and steel plates Cranes, piling rigs, and oversized vehicles for deliveries.

Contact us



If you would like to provide feedback, or have any questions or complaints, please contact our 24-hour Construction Response Line **1800 818 433**



RP2JCommunity@fultonhogan.com.au



nswroads.work/rp2j



For the latest traffic updates:

Call 132 701, visit [livetraffic.com](https://www.livetraffic.com) or download the app Live Traffic NSW



Interpreter service

For languages other than English call 131 450

www.transport.nsw.gov.au/privacy-statement#Your_Privacy

How we measure noise (in dBA)

