

Managing vehicle access to properties during construction

The Gold Coast Light Rail Stage 3 (GCLR3) project team is committed to providing a safe environment for all road users, pedestrians, bike riders and workers.

There will be traffic changes on the Gold Coast Highway and some surrounding side streets during construction including temporary intersection closures, lane closures, parking closures, changes to speed limits and bus stop relocation/closures.

This factsheet provides information about vehicle access to properties during construction.

Work areas

Long term work areas will be established on the outer sides of the Gold Coast Highway to relocate underground utilities and install new infrastructure.

The work areas will be located from the existing kerb, typically occupying areas of on-street parking, verges and existing bus lanes. This will change how vehicles access properties with driveways.

The map overleaf provides an example of a typical work area which will be in place when working on the outer sides of the Gold Coast Highway.

Property access for vehicles

Local vehicle access to properties within our work area will be provided (outlined in the map overleaf as an orange dashed line). This provides vehicle access for private and commercial properties which have driveways, or off-street parking within work areas.

To maintain a safe working environment, only vehicles which require access to properties can enter the work areas.

Information for businesses

Motorists including customers, staff, maintenance, waste and delivery drivers can continue to use driveways and off-street parking and should follow 'local access' traffic signage and directions. This factsheet can be shared with customers and suppliers to assist them with journey planning.

Businesses who do not have driveway access or off-street parking are encouraged to utilise the parking provided on adjacent side-streets. You can read more about parking changes on side-streets in our **parking factsheet**.

Loading zones

Any loading zones affected by work areas and construction activities will be relocated to the nearest suitable location. Loading zones will not be available within work areas.

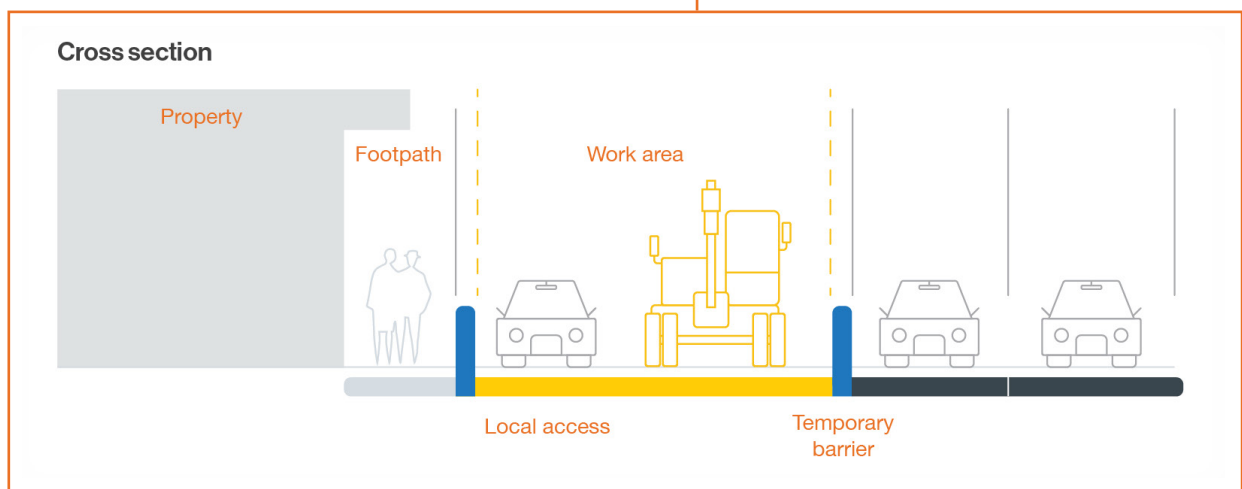
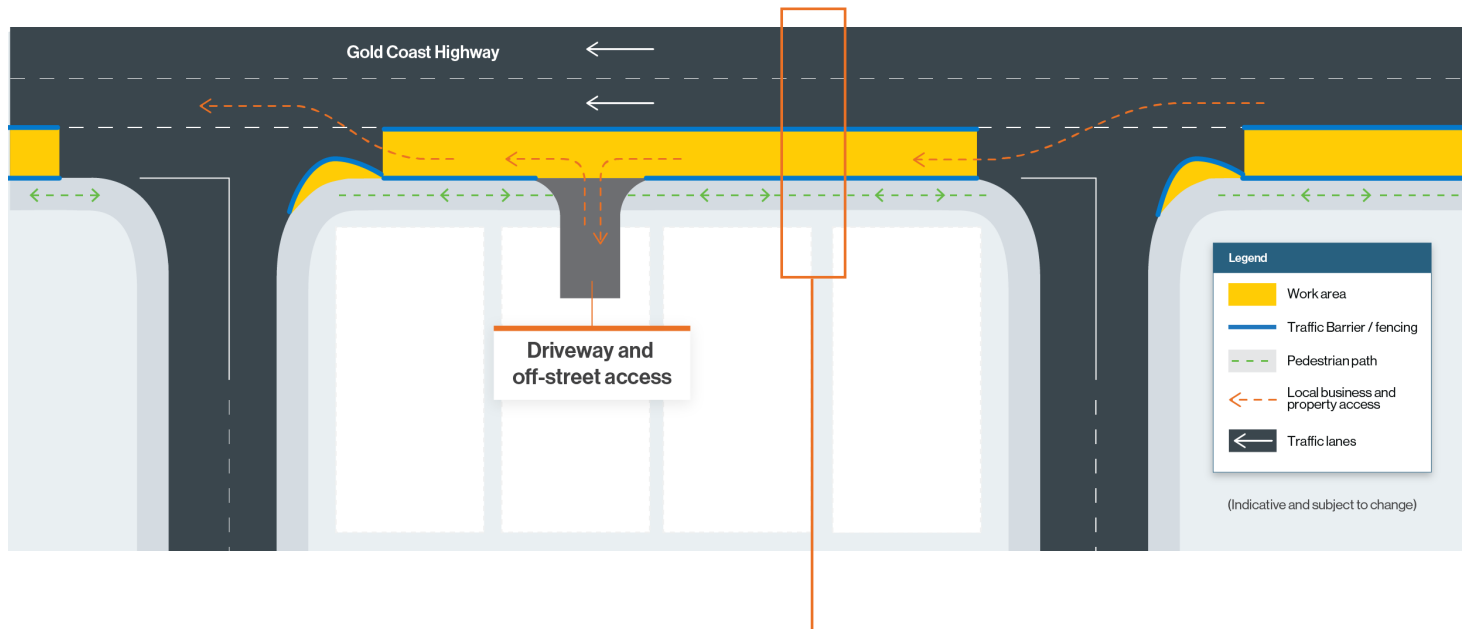
If your business has unique circumstances where an alternative loading zone may not meet your operational requirements, please contact the project team on 1800 312 600 to discuss further.



Example: Local traffic only guidance signage



Local access map



About GCLR3

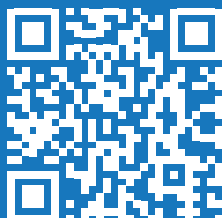
The Queensland Government, in partnership with the Australian Government and the City of Gold Coast is delivering Gold Coast Light Rail Stage 3 (GCLR3), extending the light rail network by 6.7 kilometres from Broadbeach to Burleigh Heads.

John Holland is GoldlinQ's chosen contractor to design and construct GCLR3. This city-shaping project will support more than 760 jobs and cater to the Gold Coast's expected population growth in the coming decades.

Useful tips

- Pay attention to road signs near the work areas and follow directions and traffic signage.
- Delays are expected - plan your trip ahead of time.
- During construction hours, traffic controllers will be on-site to assist with vehicle movements.
- There is no-stopping or on-street parking available within the work area.

For more
information



Visit: www.gclr3.com.au
Email: contact@gclr3.com.au
Phone: 1800 312 600*

*Free call anywhere in Australia. Call charges apply from mobiles.