

M12 Motorway

Community update

May 2024



Australian Government

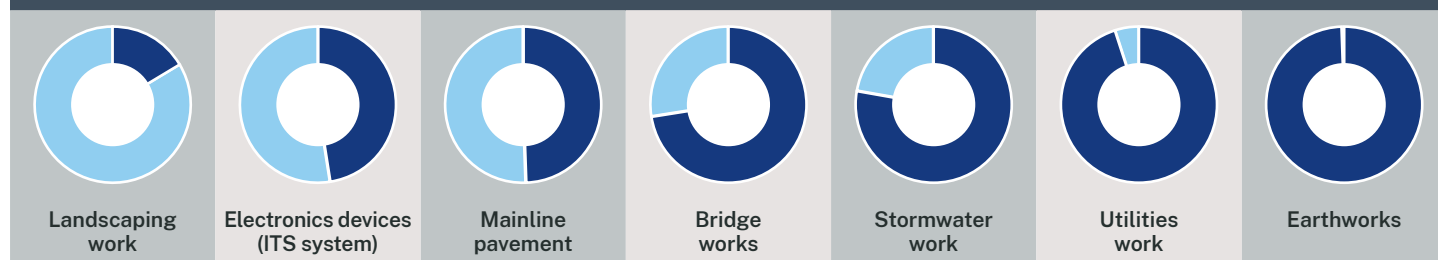


Lifting girders on Badgerys Creek bridge

The Australian and NSW governments are securing a brighter future for Western Sydney's residents, visitors and workers by delivering the new M12 Motorway.

Transport for NSW has made significant progress on the M12 Motorway as the project hits major milestones in the lead up to its opening in mid-2026. Take a look inside to see some of our key highlights.

As of May 2024, we have completed:



Transport for NSW acknowledges the Dharug people as the Traditional Custodians of the lands on which we work and pays respect to Elders past and present.



Installing steel reinforcement



Pouring the final layer of concrete



Workers trowelling the concrete pavement

M12 central road pavement being installed, including the shared path

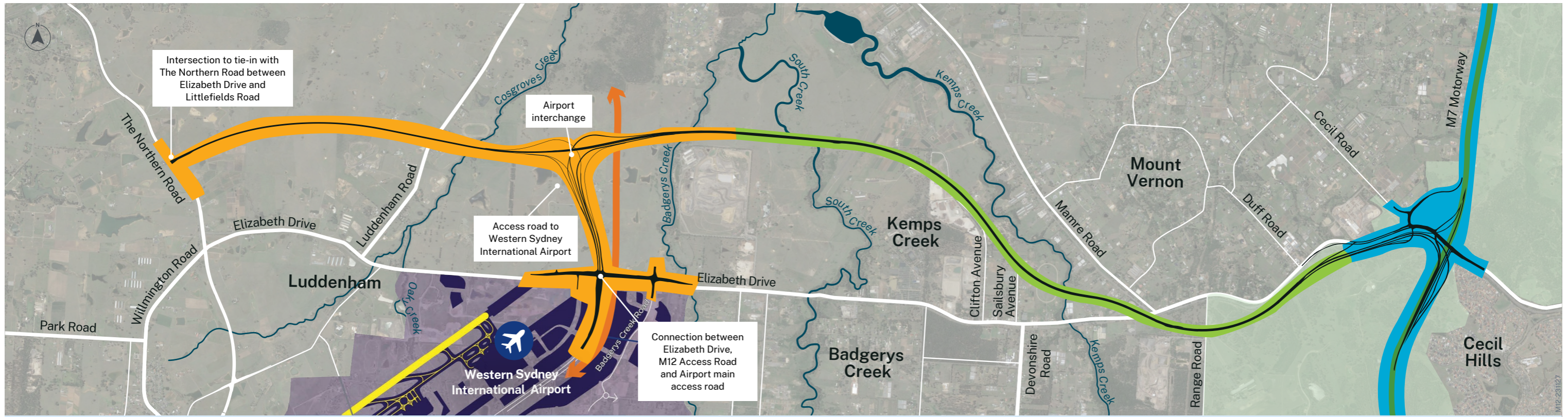
Paving the way

The M12 Motorway is shaping up to its final appearance as the top layer of concrete is poured between Luddenham and Cecil Park.

Around 43,000 cubic metres of concrete has already been poured with another 27,000 cubic metres to go across 14km on the M12 Motorway.

We chose to use concrete as the final layer over asphalt for the motorway due to many advantages such as reduced life cycle costs, wear-resistance, sustainability and lower maintenance needs.

The road pavement will be 400mm thick and once complete it will need to undergo diamond grinding on the surface to improve ride quality and reduce the amount of noise made by vehicles.



Toll free motorway

16 kilometres
of new shared path built with lighting for safety

Direct access to Western Sydney International Airport

Travel time savings up to **16 minutes**

Capacity of **52,000** vehicles a day

Four lanes with a wide median to add an extra lane in future

KEY

M12 West

M12 Central

M7-M12 Integration

M7 Motorway

Parkland

Creek

Western Sydney International Airport

Sydney Metro

Upcoming work and milestones

In the coming months, we will:

- continue pavement, drainage and utility works across different sections of the motorway
- complete building South Creek, Kemps Creek, Range Road, Water Tower Access Road, Luddenham Road and Cosgroves Creek bridges
- complete the installation of Intelligent Transport Systems (ITS) across the central section
- continue concrete pours on Elizabeth Drive twin bridges near Mamre Road
- complete the realigned Elizabeth Drive and Badgerys Creek Road intersection with traffic lights
- complete bridge girder installations on west, a total of 393
- start building the Great Emu In The Sky sculpture
- continue building the decks of three bridges supporting the Airport Interchange including laying asphalt
- start landscaping and planting work.



Building Airport Access Road looking north

Fast facts as of May 2024

 25,425 metres of stormwater pipes installed	 2,635,587 cubic metres of completed earthworks	 34,800 metres of fence installed
 588 tonnes of timber reused	 441 piles installed	 5,215 metres of water mains installed
 3,286,602 hours worked	 146,350 tonnes of topsoil reused	 561 girders installed

New section of Elizabeth Drive opens to traffic

The new Elizabeth Drive bridge is fast on its way to becoming the gateway into the Western Sydney International Airport as it was partially opened to road users on Monday 11 March.

When fully complete, the new bridge will allow traffic from the M12 Motorway, and the Western Sydney Airport Metro line to flow freely underneath into the airport. There will also be ramps built from Elizabeth Drive directly into the airport.

Around 90 workers and 2.5 thousand tonnes of asphalt was laid in preparation for the opening during a 56-hour closure of Elizabeth Drive between Adams Road and Badgerys Creek Road.

Work will continue to be carried out on the Elizabeth Drive Bridge including asphaltting the northbound lanes and installing the piers for three bridges that will connect into the airport interchange.

We'd like to thank the community for their patience and support while we carried out this important work.



Motorists driving on the new Elizabeth Drive bridge looking east to Badgerys Creek Road roundabout



M12 environment team at the project's second concrete batch plant

M12 going cleaner, greener

Emission cutting steps are being taken to make our construction activities cleaner and greener. Since November 2023, the M12 West section has beat its renewable energy target by running the project's power needs on 50 percent GreenPower. This means that half of our energy demands are solely using accredited GreenPower and that our reliance on diesel generators is minimised across project sites.

To further support the project's sustainability targets, we have started operating a second on-site concrete batch plant. The new concrete batch plant will not only service the project's concreting needs but also reduce truck movements in the area. By taking trucks off the road, we will save large amounts of fuel being used and minimise the project's impact to local traffic.



Communicating with future people

Recently we filled a time capsule and buried it into the Elizabeth Drive bridge near Mamre Road in Kemps Creek. We received various items from the students at Kemps Creek Public School and Christadelphian Heritage College. These items included a student's letter, a teddy bear, school newsletters, design drawings, The Australian newspaper and a project team photo taken on the bridge. The time capsule was placed in the bridge deck on 10 January 2024 just before the concrete was poured.

This initiative was a fun and engaging experience for all involved and provides shared memories for the future.



Items filled in the time capsule



Time capsule ready to be installed



Aerial view of the Elizabeth Drive bridge in Kemps Creek under construction

Twin bridges reach halfway point

In March 2024, the first half of the twin bridge over Elizabeth Drive, near Mamre Road was completed.

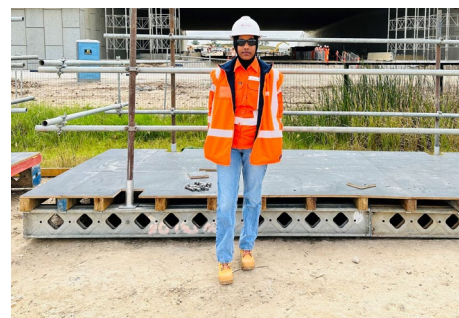
The new bridge stands 5.4 metres high with a span of 132 metres. At opening, the bridge will provide two lanes in each direction with space for a third lane to be opened in the future. It will also include a dedicated shared user path for pedestrians and bike users.

The team has started working on the remaining half of the bridge with all work to be completed by late 2024.



Lookout for Illegal dumping

The amount of waste being illegally dumped within the Badgerys Creek, Kemps Creek and Luddenham areas has increased and poses many risks to our community. We ask you to help by disposing of waste safely and correctly. If you spot it, make a report on the RID website ridonline.epa.nsw.gov.au



Kismat near the Elizabeth Drive bridge at Badgerys Creek

Helping interns start their careers

CPB Contractors has partnered with CareerSeekers to help humanitarian entrants into professional careers. The M12 Motorway West section has employed six staff through this important program including Kismat A. Kismat is a Communications Undergraduate studying a Bachelor of Business at Western Sydney University. Kismat completed her first internship in our community engagement and internal communications team late last year. Kismat said she is enjoying her time on the M12 with it providing an opportunity to learn and gain professional skills and knowledge about the construction industry.

As a result of this great initiative, Kismat is now working casually with CPB while she finishes her studies.

Contact us



Project Infoline **1800 517 155**



m12motorway@transport.nsw.gov.au



nswroads.work/m12

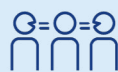


Transport for NSW
PO Box 973 Parramatta NSW 2124



For the latest traffic updates:

Call 132 701, visit livetraffic.com or download the app Live Traffic NSW



Interpreter service

For languages other than English call **131 450**
Arabic • Greek • Hindi • Mandarin • Vietnamese

لطلب خدمة الترجمة الشفهية للغات غير الإنجليزية اتصل
بالرقم **131 450**

Για υπηρεσίες διερμηνείας σε άλλες γλώσσες εκτός από
τα Αγγλικά καλέστε το **131 450**

अंग्रेज़ी के अतिरिक्त अन्य भाषाओं के लिए दुभाषिया सेवा
131 450 पर कॉल करें

获取英语以外的其他语言口译协助服务可以致电**131 450**

Để có dịch vụ thông ngôn cho các ngôn ngữ khác tiếng
Anh, gọi số **131 450**

www.transport.nsw.gov.au/privacy-statement#Your_Privacy