

## APPENDIX H SENSITIVE RECEPTORS

### Sensitive Receptors

The MRSD Act defines sensitive receptors as features that are internal (site based) and external to the mining lease area based on the following categories:

- Any member of the public: public health, safety, amenity and cultural values Aboriginal heritage
- Land, property and infrastructure: third party property, land use and nearby infrastructure such as highways, transmission lines, pipelines, schools and hospitals
- Environment: air, water, soil, vegetation, flora & fauna species, surface water, groundwater and heritage

The MRSD Regulations require, for the purposes of a mine work plan, the identification of sensitive receptors within a minimum of 2km from MIN5004 area. This minimum distance has been applied to the identification of sensitive receptors for the DMRP. The inclusion of a sensitive receptor as a feature relative to the DMRP does not automatically imply that the feature is impacted by the activities defined in the DMRP. Where a risk of impact to the receptor exists as a result of activities relating to the DMRP, the receptors are identified in the DMRP risk assessment.

Table 1 below summarises all sensitive receptors identified within 2km of MIN5004 as well as those that have been identified in other technical studies and are considered relevant.

Table 1 Sensitive receptors within 2km of MIN5004

Receptor category	Receptor ID	Receptor name	Proximity to site
<b>Schools/Education</b>	1	Sacred Heart Catholic Primary School <i>Cnr Wilson Street and Commercial Road</i>	770 m
	2	Goodstart Early Learning Centre <i>252 Commercial Road</i>	800 m
	3	Maryvale Crescent Pre-school <i>14 Maryvale Crescent</i>	800 m
	4	Berry Street School <i>Driffield Road</i>	700 m
	6	TAFE Gippsland Morwell Campus	1500 m
<b>Churches</b>	7	Christian Community Church Morwell <i>5 McDonald Street</i>	1000 m
	8	Greek Orthodox Church <i>42 Elgin Street</i>	640 m
	9	Hazelwood Cemetery <i>Brodribb Road</i>	610 m
	10	Sacred Heart Catholic Church <i>262 Commercial Rd</i>	770 m
	11	St Marys Anglican Church	1170 m
	12	Morwell Baptist Church	730 m
	13	Morwell Presbyterian Church	1200 m

Receptor category	Receptor ID	Receptor name	Proximity to site
Significant public roads	14	Brodribb Road	610 m
	15	Homestead Road	670 m
	16	Princes Freeway	230 m
	17	Commercial Road	770 m
	18	Marretts Road	1150 m
	19	Buckleys Track	740 m
	20	Blacks Track	830 m
	21	Laws Track	1060 m
	22	Deans Road	910 m
	23	Yinnar Road	550 m
	24	Golden Gully Road	730 m
	25	Strzelecki Hwy, Driffield	1800 m
	26	Strzelecki Hwy, Interchange	760m
	29	Intersection of Strzelecki Highway and Deans Rd	810 m
Railway	31	Melbourne – Traralgon railway line	900 m
Waterways	32	Morwell River Diversion	360 m
	33	Morwell River Flood Levee	330 m
	34	Eel Hole Creek Diversion	450 m
	35	Eel Hole Creek Flood Levee	480 m
	36	Wilderness Creek	830 m
	37	Morwell Main Drain	210 m
	38	Hazelwood Cooling Pond	700 m
	40	Bennett's Creek	1100 m
	41	Morwell River Wetlands	300 m
Bridges	42	Commercial Rd bridges over Princes Fwy	720 m
	43	Princes Fwy bridges over former Interconnecting Railway	270 m
	44	Strzelecki Hwy bridge over Morwell River	980 m
	45	Strzelecki Hwy bridge over Wilderness Creek	1340 m
Public Facilities & Recreation	46	Industrial area (EFEB)	200 m to 1000 m
	47	Morwell township residences	290 m to 2000 m
	49	Morwell Recreation Reserve, Travers St Morwell	300 m
	50	Hazelwood Cemetery, Yinnar Rd Hazelwood	450 m
	51	Driffield Memorial, 485 Strzelecki Hwy	980 m
	53	Morwell Railway Station	900 m
	54	Morwell War memorial	830 m
	55	Captain Stanley Savige Monument	960 m
	56	Morwell Telephone Exchange	1290 m
	57	Morwell Rotunda	890 m

Receptor category	Receptor ID	Receptor name	Proximity to site
	58	ANZAC Lookout	570 m
	59	Lloyds Hole	910 m
	60	Latrobe Regional Gallery	900 m
<b>Conservation areas</b>	61	Eel Hole Creek/Cemetery Net Gain Offset Area	470 m
	61	Deans Road Offset Area	60 m
	63	Eucalyptus Strzeleckii Offset Area	940 m
	64	Old Eucalyptus Strzelecki Highway Net Gain Offset Area	1200 m
	65	Eric Lubcke Yarra Gum Conservation Reserve, Willis St Morwell	480 m
	66	Firmins Lane Wetlands, 25 Firmins La	1790 m
	68	Morwell Centenary Rose Garden	960 m
	69	Toners Lane Reserve and Dog Park	1700 m
<b>Groundwater</b>	70	Shallow Aquifer System (HHF)	10-15 m below natural surface
	71	Morwell Formation Aquifer System (MFAS) Underlies the open cut (M1 Aquifer)	100-120 m below natural surface
	72	Traralgon Formation Aquifer System (TFAS) (M2 Aquifer)	165-300 m below natural surface
	73	Bores – Registered (M1 and M2 Pump Bores)	Mine crest M1 and M2 pump bores
	74	Bores – External use (not ENGIE – Buckleys Hill)	1150 m
<b>Members of the public / Residential Areas</b>	75	Morwell	200 m
	77	Driffield	1920 m
	78	Hazelwood A	No Location
	79	Hazelwood B <sup>[1]</sup>	No Location
<b>Cultural heritage</b>	80	Wilderness Creek - Cultural Heritage Sensitivity (CHS)	530 m
	81	Morwell River CHS	400 m
	83	Bennetts Creek CHS	990 m
	85	Artefact Sites CHS (GeoVic)	At mine crest
	86	ACHRIS Mapped sites of significance (GeoVic)	At mine crest
<b>Historic heritage</b>	87	H2377 Morwell power station and briquette factory (Heritage Register)	470 m
	88	H2130 No21 Dredger (Heritage Register)	600 m
	91	H8121-0044 Merton Rush Historic Scatter (Heritage inventory)	1370 m
	95	H8121-0059 Former Morwell to Mirboo North Railway artefact scatter (Heritage Inventory)	1400 m
	98	P382554 (unrestricted CL west of mine)	1660 m

<sup>[1]</sup> As identified in noise and vibration technical report

Receptor category	Receptor ID	Receptor name	Proximity to site
<b>Crown land (~102 parcels to be identified on plan)</b>	101	2025\PP2749 (Restricted CL Natural features reserve)	
	102	2068\PP2749 (Restricted CL Natural features reserve)	
	103	Wilderness Creek Water Frontage (Restricted CL – Natural Features Reserve)	240 m
	104	Morwell River Water Frontage (Restricted CL – Natural Features Reserve)	0 m <u>Crown Land</u> <u>T/F Not Complete</u>
	105	Morwell River – Middle Creek Water Frontage (Restricted CL – Natural Features Reserve)	
	107	6G1~A\PP2749 (Unrestricted CL north of mine), 'The Ridge'.	700m
	108	Uncategorised Public Land CL north of mine in Morwell (numerous)	230m
<b>Third party owned land and property</b>	109	RTL Hazelwood	70 m
	110	Omnia Specialties / Gippsland Soil Solutions	140 m
	112	Morwell Transfer Station	1670 m
	113	Morwell Terminal Station	1230 m
	114	PowerWorks Energy Education Centre	590 m
	115	Hazelwood Battery Energy Storage (ENGIE)	340 m
<b>Agricultural land</b>	116	TBC - ENGIE	Min. 70 m from mine crest
<b>FFG listed species and communities (~28 areas to be identified on plan)</b>	117	242 Forest Red Gum Grassy Woodland	Shown in GeoVic at mine crest
	118	243 Central Gippsland Plains Grassland	Shown in GeoVic at mine crest
	119	339 Sedge-rich Eucalyptus camphora swamp	Shown in GeoVic as 'in-mine', nearest external to mine at 1230 m
<b>Threatened Flora</b>	121	To be identified by ecologist	Shown in GeoVic as 'in-mine', nearest external to mine at 550 m (North of mine)
<b>Threatened Fauna</b>	122	To be identified by ecologist	Shown in GeoVic as 'in-mine', nearest external to mine at 830 m (East of mine)
<b>View Locations</b>	123	Morwell Railway Station, Princes Dve Morwell	900 m
	124	Morwell Recreation Reserve, Travers St Morwell	300 m
	129	Strzelecki Highway, Driffield	1800 m
	130	Intersection of Strzelecki Highway and Deans Rd	810 m
	131	Marretts Rd, Hearn's Oak	1150 m

Receptor category	Receptor ID	Receptor name	Proximity to site
	132	Hazelwood Cemetery, Yinnar Rd	450 m
Transmission towers	133	220 kV transmission towers (south)	320 m
	134	220 kV transmission towers (east/north)	50 m
Electrical substations	135	Morwell North Substation	70 m
	136	Morwell East Substation	40 m
	137	Morwell West Substation	260 m
	137A	Hazelwood Switchyard?	540 m
Transmission Lines	138	500KV power transmission line – Southwest Corner	320 m
	139	220 KV power transmission line – Northern Batters	50 m
	140	66KV distribution lines – Southwest Corner / Northern Batters	
	141	22kv distribution lines	Mine crest M1 and M2 pump bores
	142	6.6 KV distribution lines	Mine crest M1 and M2 pump bores
	143	LV distribution lines	Mine crest
	145	Tyres – Morwell gas pipeline PL 121	1920 m
	146	Morwell – Dandenong gas pipeline PL 50	1920 m
	147	Morwell City Gate Station (Int PL50/121/215)	1920 m
Fibre optic communications		TBC	
Telecommunications towers		TBC	



Figure 1 – Environmental sensitive receptors

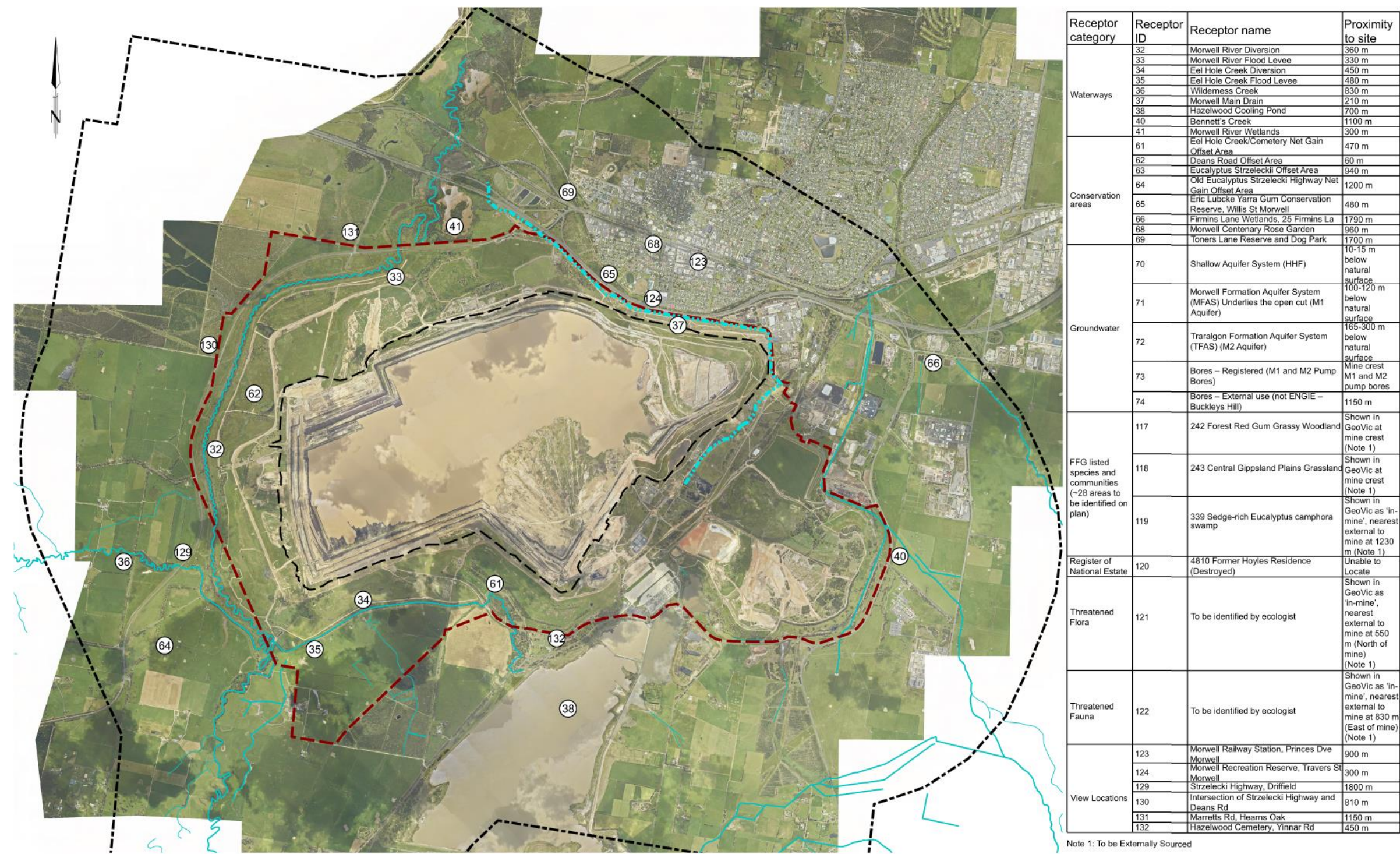




Figure 2– Land and heritage sensitive receptors

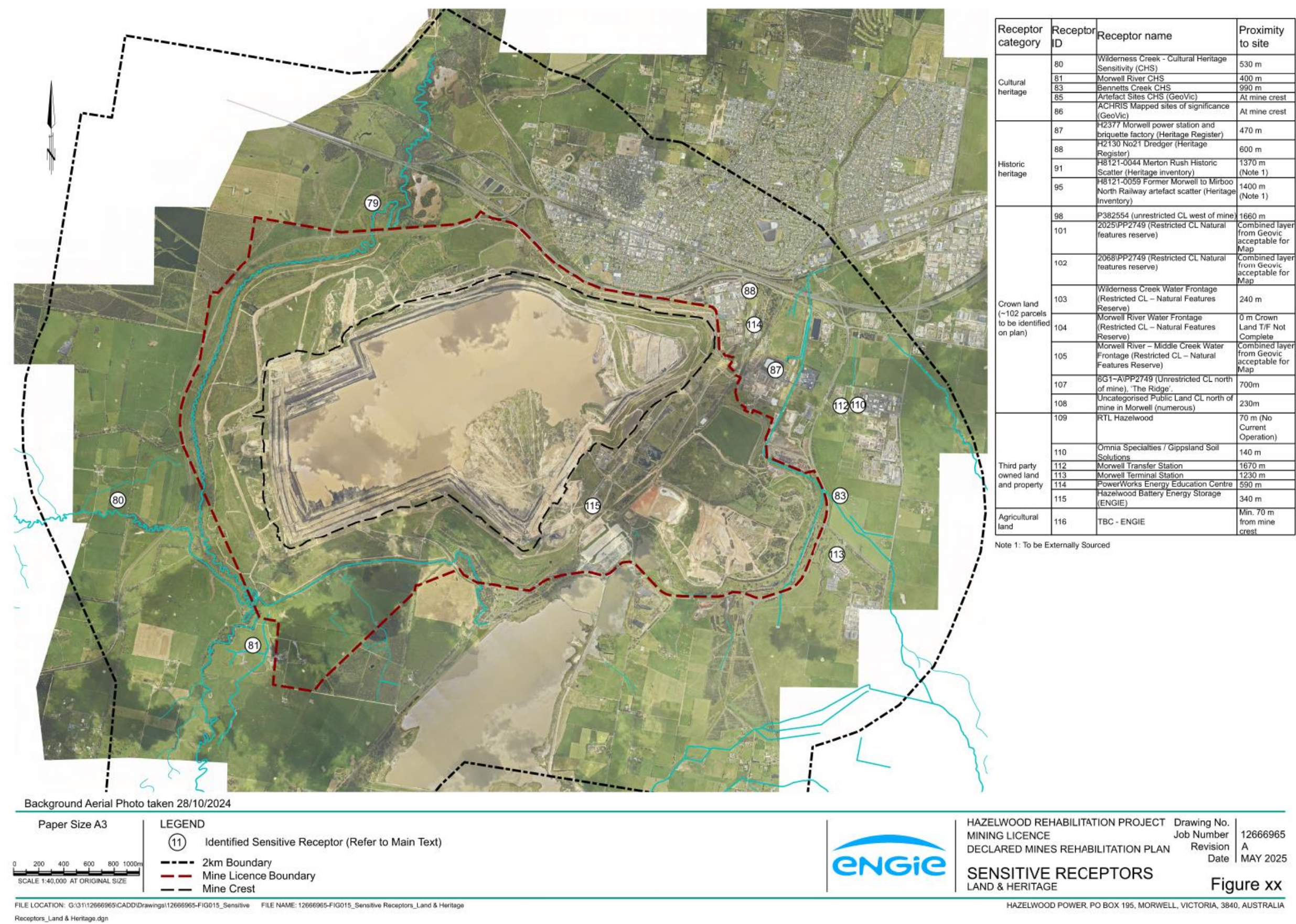




Figure 3- Public Infrastructure sensitive receptors

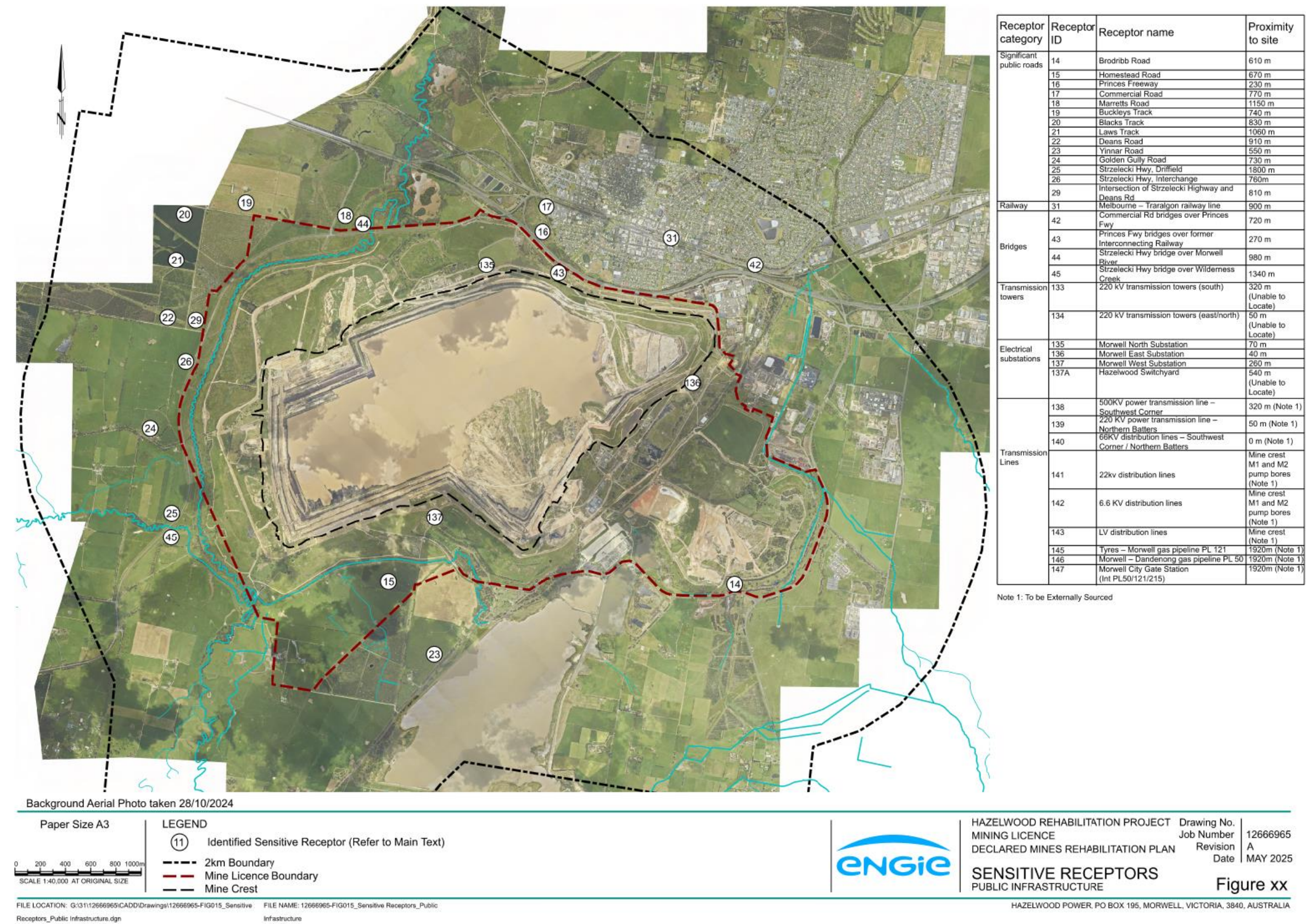




Figure 4 – Residential and Community sensitive receptors

