

Upcoming traffic and parking changes for West Botany Street Work

M6 Stage 1

March 2025



Transport for NSW acknowledges the Bidjigal, Dharawal, Gweagal and Gadigal clans of the Eora Nation as the Traditional Custodians of the lands on which we work and pays respect to Elders past and present.

From 5am on Tuesday 18 March until the end of 2026, West Botany Street will be reduced to one lane in each direction, between French Street and the Bicentennial Park northern carpark.

Tunnelling in the area impacted by subsidence is planned to recommence in 2025. From January 2025, work has begun to temporarily relocate major utilities located on West Botany Street, as well as near our Motorway Operations Complex (MOC3) and Bicentennial Park site.

To learn more about this work and the next stages, please scan the QR code to view our *West Botany Street Work Fact Sheet*.



When and where we will be working

Traffic changes on West Botany Street between French Street and the Bicentennial Park northern carpark will begin on the night of Monday 17 March, with main impacts starting from Tuesday 18 March.

Our standard work hours are from 7am to 6pm, Monday to Friday and 8am to 6pm, Saturday.

We are approved to work out-of-hours from 6pm to 7am, for up to three weeknights per week, no more than two consecutive weeknights and a maximum of 10 nights per month.

Our planned out-of-hours work dates on West Botany Street are:

- 6, 7, 11, 13, 14 and 17 March

Contingency nights are:

- 18, 20, 21, 24, 25, 27 and 28 March.

What work will we be doing?

- Installing barriers to create the work area on the eastern side of West Botany Street.
- Removing and painting new line markings and arrows on West Botany Street, between President Avenue and Bermill Street.
- Instating new traffic arrangements on West Botany Street by 5am the next morning.
- Saw cutting and hammering to remove the existing pedestrian median island crossing near the Bicentennial Park southern carpark.
- Reinstating a new pedestrian island crossing and accessibility ramps near French Street.
- Increased truck movements may occur to access our work zones to deliver, collect or store material and equipment.
- Ongoing relocating and upgrading of utility assets along and across West Botany Street.
- Ongoing ground improvement works along West Botany Street, and within the eastern zone work area.

What will this mean for you?

- From 10am on Monday 17 March, on-street parking will be removed on West Botany Street in the following locations:
 - Permanently on the western side, between President Avenue and Green Lane
 - Temporarily on the western side, between Green Lane and French Street
 - Temporarily on the eastern side, between 444 and 448 West Botany Street.
- Motorists must prepare to merge 60m on approach to the work zone.



- Motorists can use alternate routes via The Grand Parade and Princes Highway.
- Pedestrian access will remain available along West Botany Street, on the opposite side of the work zone. Pedestrian crossings will be available via existing signalised intersections at the Bicentennial Park northern carpark and President Avenue, as well as via the newly upgraded pedestrian island near French Street.
- All motorist access and egress movements will remain available at the Bicentennial Park northern carpark.
- Motorist movements will be reduced to left-in and left-out only at the Bicentennial Park southern carpark.

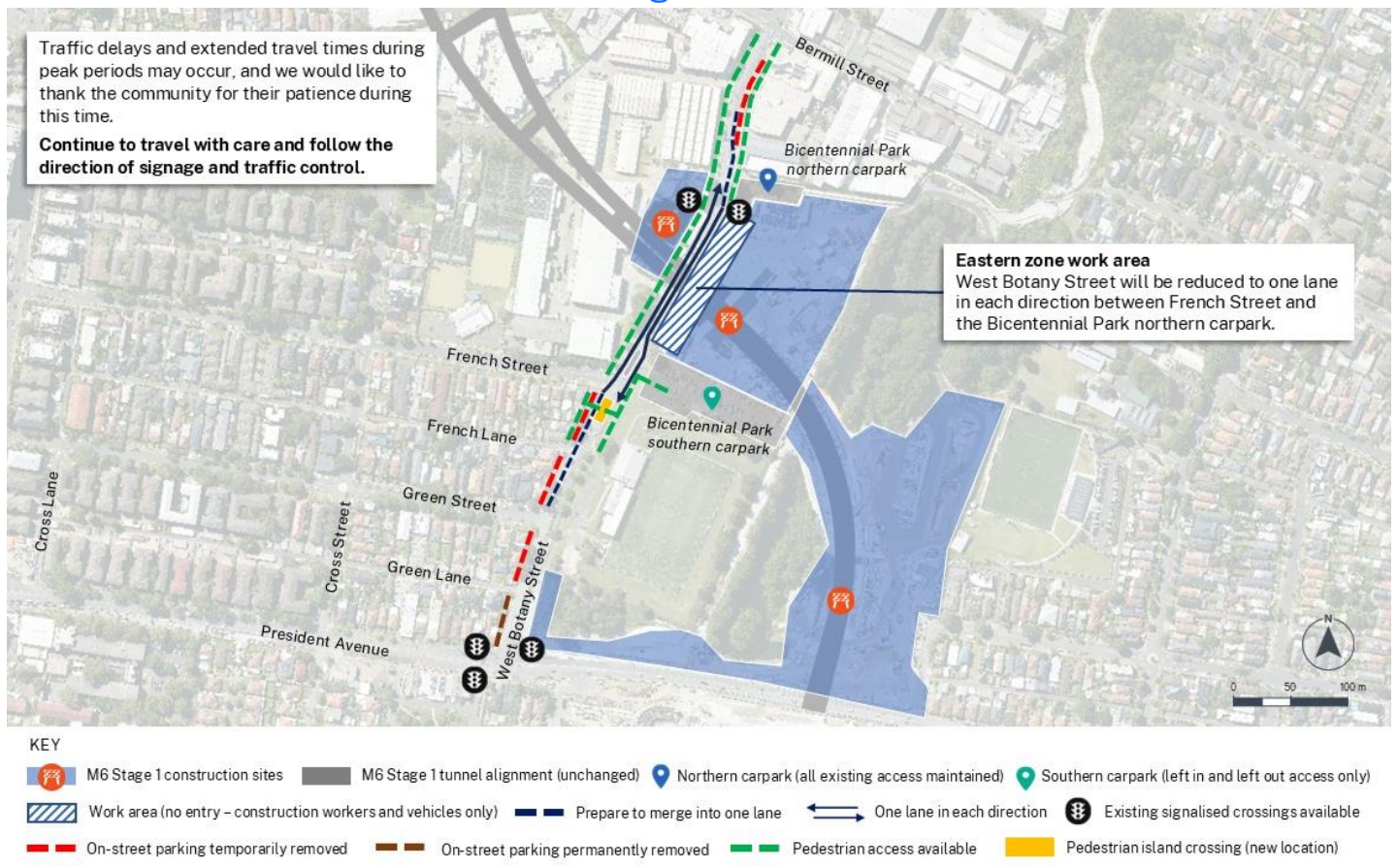
Managing our impacts

This work will be disruptive and noisy at times, and we thank you for your patience. To reduce the impact of our work we will:

- limit the use of noise and vibration-generating equipment
- install temporary fencing and noise screening blankets (where required and safe to do so)
- provide respite by limiting high noise impact works after midnight where reasonable and feasible (such as hammering and saw cutting).

Independent utility companies may work at day or night in the area, causing temporary service interruptions. If this is the case, utility providers will notify affected properties.

Location of work area and traffic changes



Contact us



Project Infoline and 24-hour Construction Response Line **1800 789 297**



info@M6Stage1.com.au
PO Box 7261 Alexandria, NSW 2015



Visit the online portal go to nswroads.work/M6portal



For the latest traffic updates:
Call 132 701, visit [livetraffic.com](https://www.livetraffic.com) or download the app Live Traffic NSW



Interpreter service

For languages other than English call 131 450
Arabic • Greek • Hindi • Mandarin • Vietnamese

لطلب خدمة الترجمة الشفهية للغات غير الإنجليزية اتصل بالرقم **131 450**

Για υπηρεσίες διερμηνείας σε άλλες γλώσσες εκτός από τα Αγγλικά καλέστε το **131 450**

अंग्रेजी के अतिरिक्त अन्य भाषाओं के लिए दुभाषिया सेवा **131 450** पर कॉल करें

获取英语以外的其他语言口译协助服务可以致电**131 450**

Để có dịch vụ thông ngôn cho các ngôn ngữ khác tiếng Anh, gọi số **131 450**

