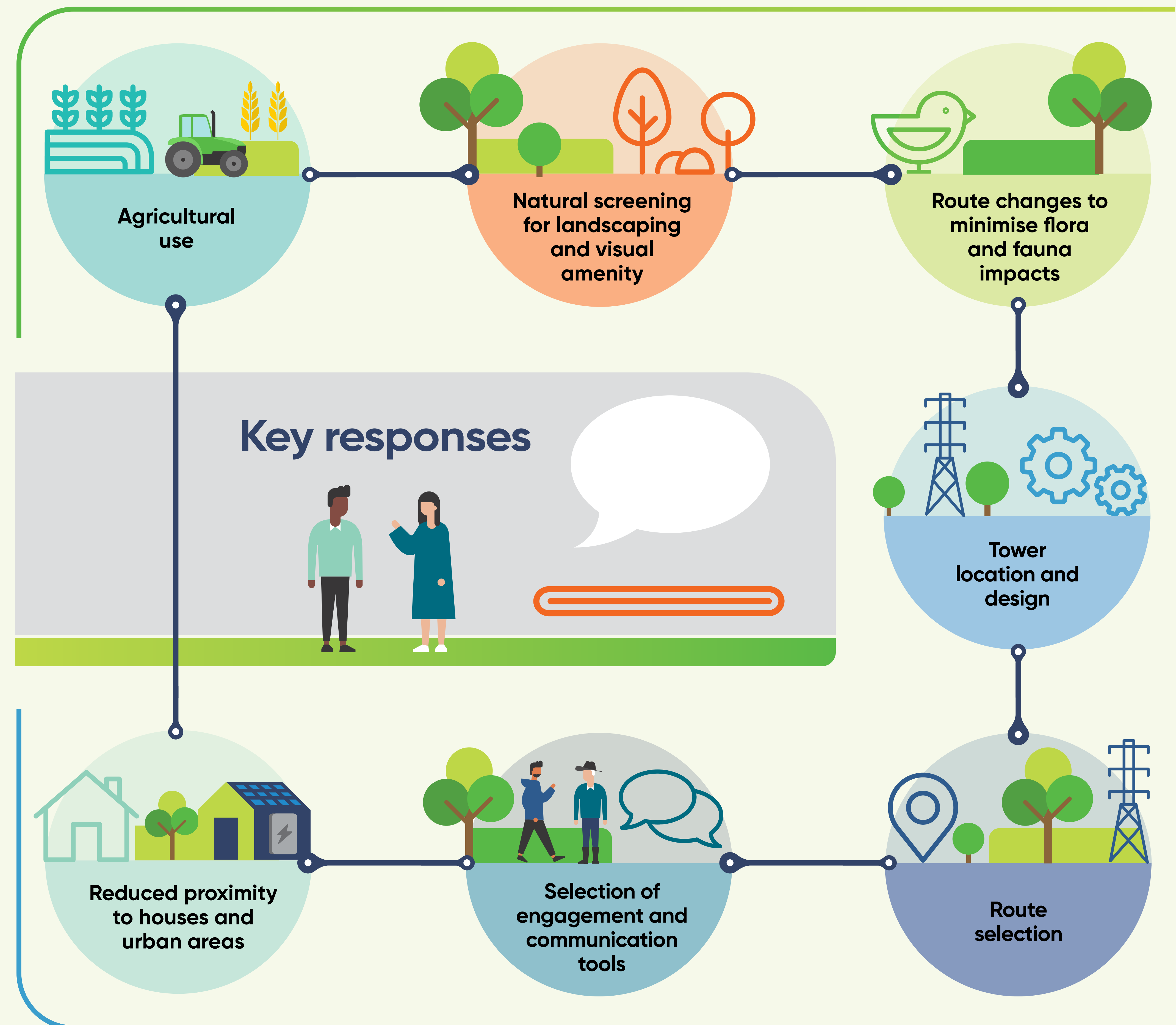


Community engagement

An important part of the Western Renewables Link is our ongoing engagement with the community. Community input is critical to all major projects to ensure that all issues are considered in the planning, design, construction and operation phases.

Engaging with Traditional Owners, key stakeholders, landholders, and the community has been essential to informing the development of the Western Renewables Link, and the impact assessments presented in the EES.

Community and stakeholder feedback has informed the Project's development and construction planning. This includes practical design changes to the alignment, tower locations, access tracks, and terminal station locations to minimise environmental, social, cultural and economic impacts and improve land use and farming opportunities, where possible.



Have your say
and stay informed

Provide feedback on the proposed project or register for project eUpdates by submitting the feedback form.

We appreciate you taking the time to share your feedback with us.

Community engagement events

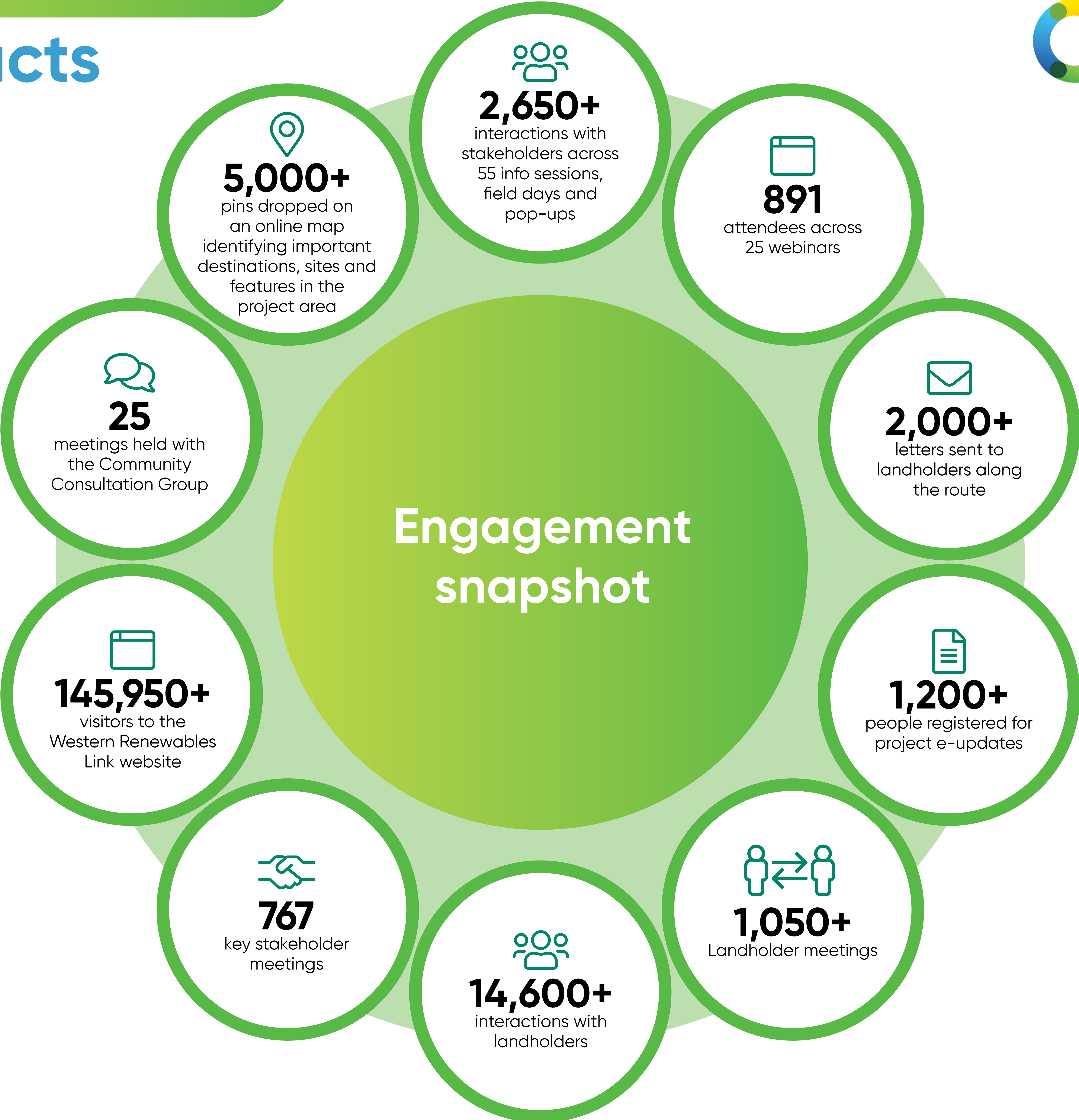


Engaging with the community to ensure local voices and concerns are considered in the planning, approvals, and design phases is critical.

In addition to direct correspondence, our project website and virtual engagement room, eUpdates and advertising, our project team endeavours to inform and engage with communities, landholders and stakeholders through face-to-face events and webinars.

You can find upcoming events in the **Events** section on our website and previous webinar recordings can be found on our **Resources** page.

Fast facts








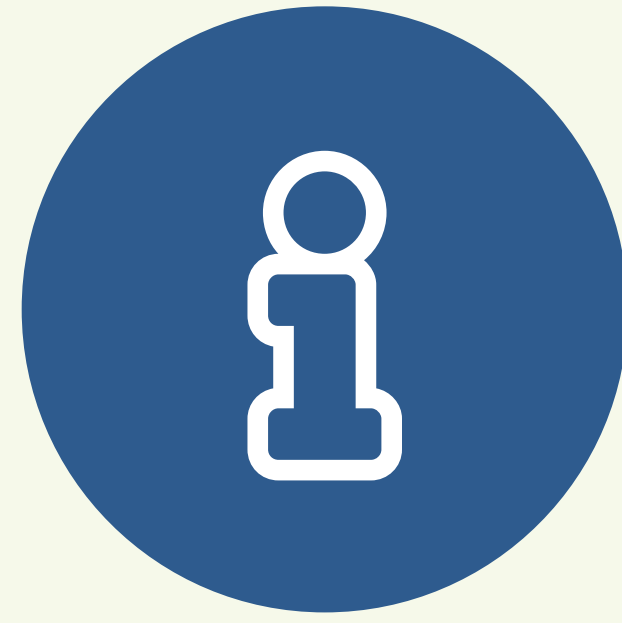
Community support services



AusNet Services acknowledges the uncertainty and concern around the Western Renewables Link, particularly for potentially affected landowners and communities.

We encourage anyone struggling with challenges to their own, a friend or a family member’s mental health and wellbeing, to contact one of the independent support providers listed below for free and confidential advice.

Support Service	Website		Telephone
 TELUS Health	TELUS Health	telushealth.com	1300 360 364
 RFCS Victoria West	RFCS Victoria West	wsrccs.com.au	1300 735 578
 HEAD TO HEALTH	Head to Health	bchc.org.au/service/head-to-health	1800 595 212
 Beyond Blue	Beyond Blue	beyondblue.org.au	1300 22 4636
 Lifeline	LifeLine	lifeline.org.au	13 11 14



Contact us

 www.westernrenewableslink.com.au

 1800 WRL WRL (975 975)

 info@westernrenewableslink.com.au

PO Box 638, Ballarat VIC 3353

Have your say and stay informed

Provide feedback on the proposed project or register for project eUpdates by submitting the [feedback form](#).

We appreciate you taking the time to share your feedback with us.

Complaints

If you have a query, a compliment or a complaint, you can let us know by using the online enquiry form on www.westernrenewableslink.com.au.

Or you can let us know by:

 1800 WRL WRL (975 975)

 info@westernrenewableslink.com.au

 PO Box 638, Ballarat VIC 3353

Other sources of information

Australian Energy Infrastructure Commissioner

www.aeic.gov.au including information about how to make a complaint, best industry practice and resources for landholders.

Australian Energy Market Operator

www.aemo.com.au including information on the Regulatory Investment Test for Transmission (RIT-T) process for this project.

Environment Effects Statement Process in Victoria

www.planning.vic.gov.au/environmental-assessments/environmental-assessment-guides/ministerial-guidelines-for-assessment-of-environmental-effects/understanding-the-ees-process including information about the environment assessment process managed by DELWP.

Energy Safe Victoria

www.esv.vic.gov.au including information about the safe design and operation of high voltage transmission networks in Victoria.

Essential Services Commission

www.esc.vic.gov.au including information about the regulation of transmission licenses in Victoria.