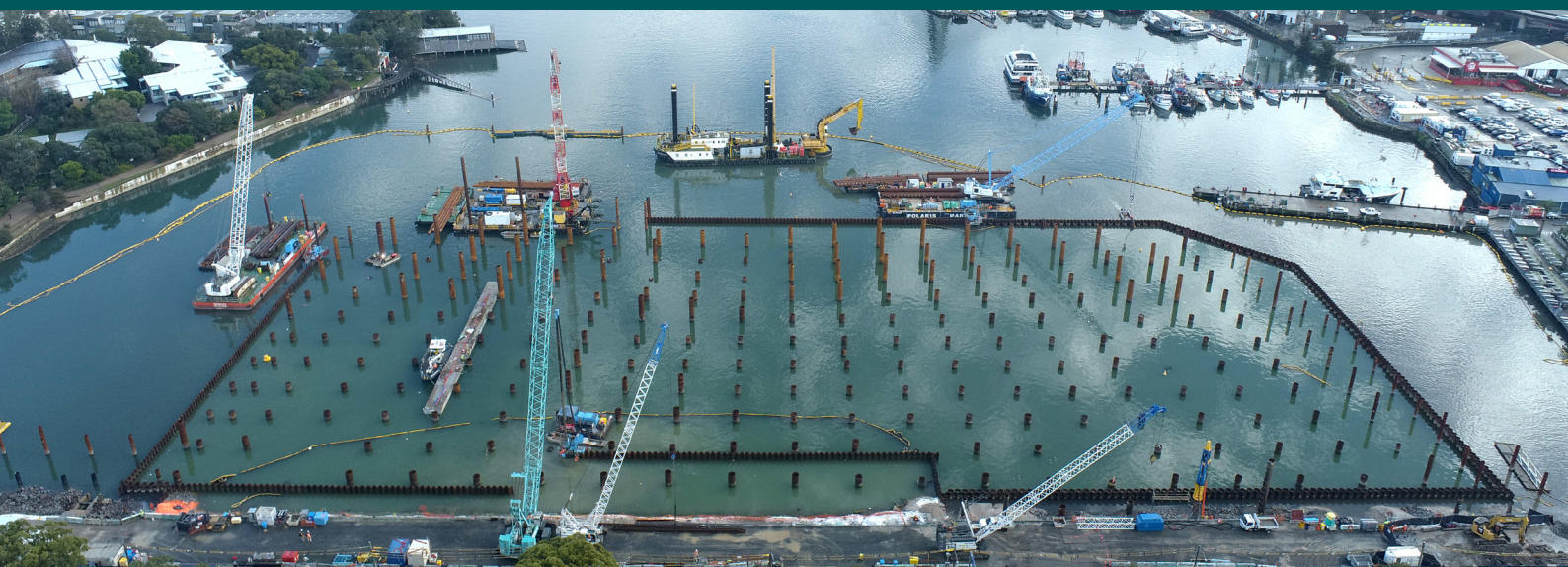


New Sydney Fish Market

Project update

August 2022

insw.com/newsydneyfishmarket



The NSW Government is delivering a new Sydney Fish Market that will support tourism and the fishing industry, strengthening Sydney's position as one of Australia's leading tourist destinations.

Construction update

Construction of the new Sydney Fish Market is progressing to schedule. Activities on site include:

- Significant headway on structural foundations for the new building
- Cofferdam construction continuing, with two piling machines installing steel sheets and tubular piles
- Seabins operating within and outside of the site's temporary silt curtain to clean Blackwattle Bay during the construction period
- Temporary site amenities constructed at the Sydney Secondary College.

^ Image above: Marine piling at the new Sydney Fish market site

Marine piling update

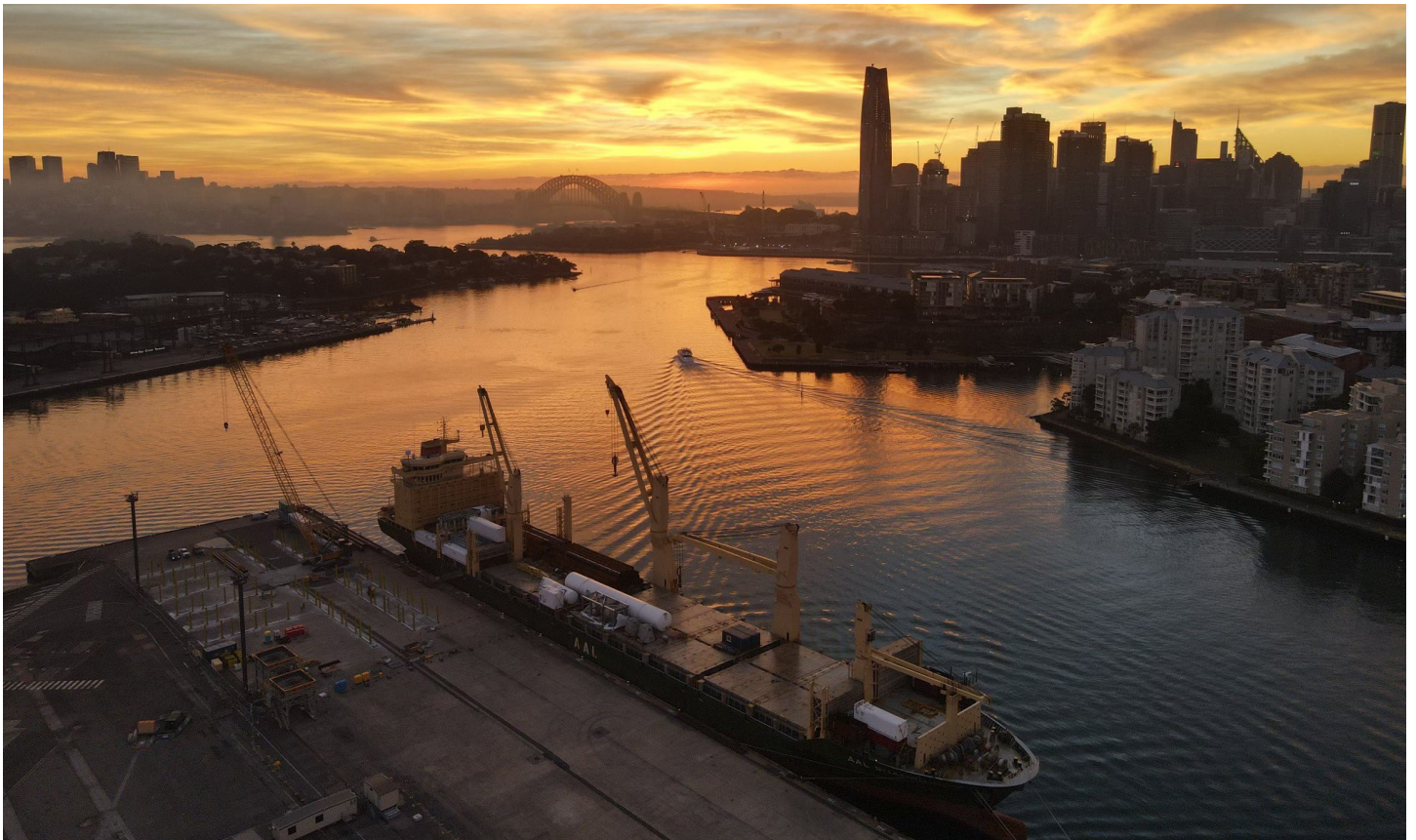
Piling at the new Sydney Fish Market site has reached the 75% mark. All 235 main building piles that will support the new structure are now in place. These piles are bigger and generate more noise when being installed.

Smaller piles to support the wharves and promenade will continue to be installed over the coming months.

Upcoming works

Over the next three months, construction activities include:

- Installing of three tower cranes
- Completing cofferdam structure
- Continuing promenade piling
- Dewatering the cofferdam
- Continuing power upgrade works from the zone substation in Camperdown.



^ Marine piles unloaded at Glebe Island

Did you know?

There will be three tower cranes installed at the new Sydney Fish Market. Each crane will be crucial to operations on site as the project progresses. The cranes at the new Sydney Fish Market project will:

- pick up loads from up to 72 metres away
- carry up to 32 tonnes depending on distance from the central tower - that's the equivalent to lifting up to 17 passenger cars at one time!
- have a jib height of approximately 108 metres above sea level
- have a cabin for operators which will sit above the roof level of the new building.

Installation of the cranes will take place in the coming months.

Glebe Island facility

Surrounded by water on three sides and with a land site that is only 12 metres wide makes finding space on the new Sydney Fish Market site a challenge. The unique project location has provided the opportunity to look 'outside the square' or 'across the water' for storage. Glebe Island port is a short boat ride away and is the ideal facility to store materials.

Utilising space at Glebe Island allows materials to be delivered directly by ship or truck, unloaded at Glebe Island, stored and then transported by barge to the construction site when required. The facility will also be used as a staging area for assembly and fabrication of construction elements such as the roof and precast panels.

The Glebe Island solution has been a win on many levels, but the greatest benefit has been the reduction of trucks on the road, which is a great outcome for the local community.

Construction hours

- Monday to Friday – between 7:00am and 5:30pm
- Saturday – between 7:30am and 3:30pm.

Any work that needs to be completed outside of these hours will be communicated in advance.

Keeping you informed

If you have any questions or feedback, please contact us:

- 📞 **1800 271 114**
- ✉️ **nsfm.community@multiplex.global**
- 🌐 **[insw.com/newsydneyfishmarket](https://www.insw.com/newsydneyfishmarket)**